

## Prediction of clinical outcome and survival in soft-tissue sarcoma using a ten-lncRNA signature

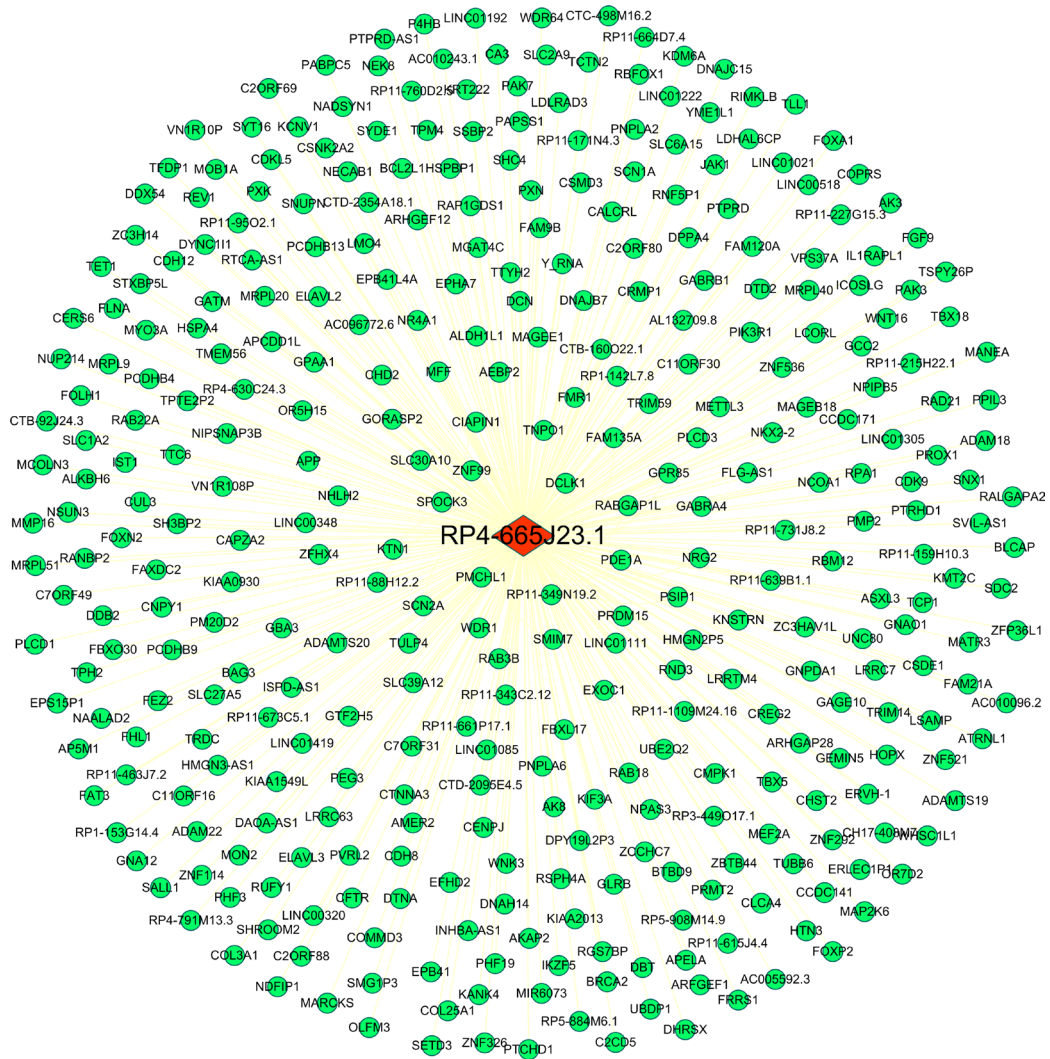
### SUPPLEMENTARY MATERIALS

**Supplementary Table 1: The association of the risk score of the ten-lncRNA signature with clinical features in soft-tissue sarcoma patients. See Supplementary\_Table\_1**

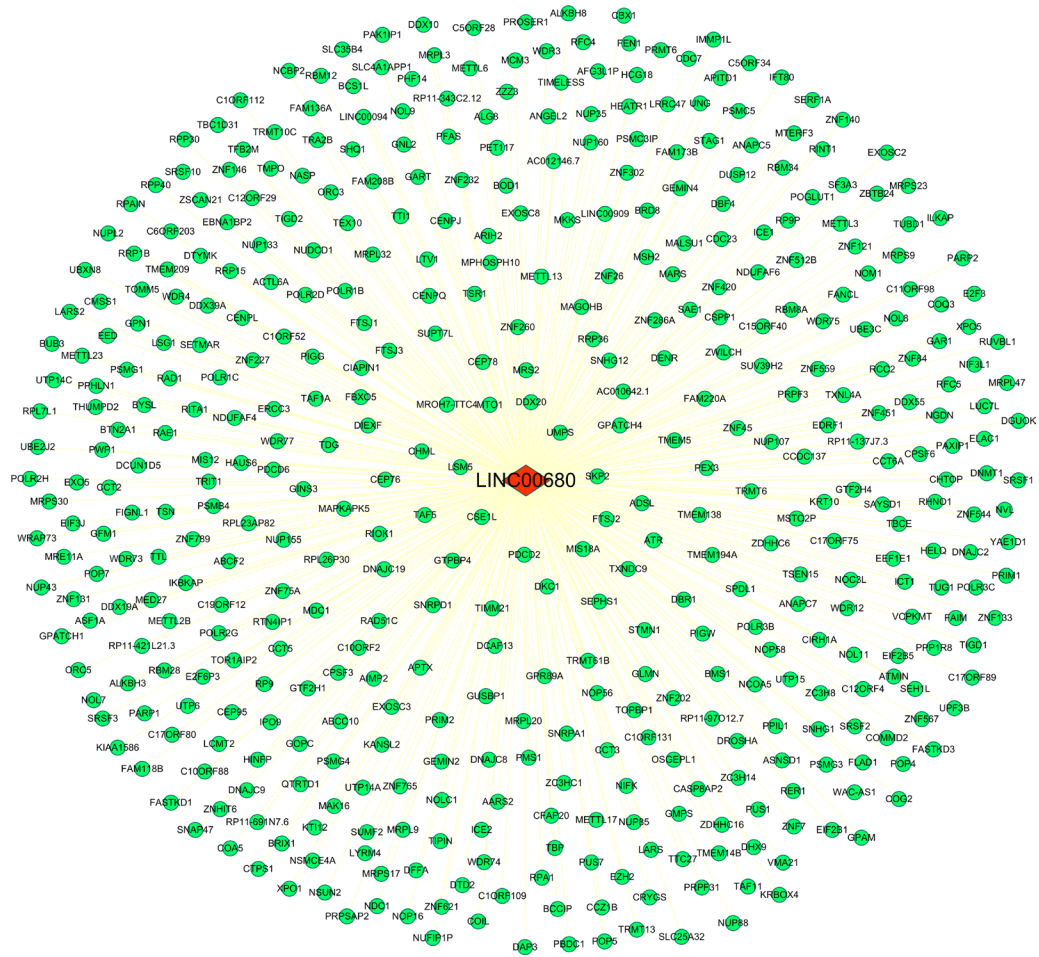
**Supplementary Table 2: The association between the lncRNAs and metastasis in sarcoma patients**

LncRNAs	Metastasis	<i>t</i> -test					ROC			Spearman	
		<i>n</i>	mean	SD	<i>t</i>	<i>P</i>	AUC	95%CIs	<i>P</i>	<i>r</i>	<i>P</i>
RP11-560J1.2	no	119	3.39	1.385	-1.186	0.237	0.555	0.478-0.630	0.2242	0.092	0.228
	yes	56	3.66	1.379							
AP001432.14	no	119	3.1	1.362	-0.282	0.778	0.505	0.429-0.582	0.9052	0.009	0.907
	yes	56	3.16	1.187							
RP4-665J23.1	no	119	7.84	1.6	-1.553	0.122	0.615	0.538-0.687	0.0146	0.189	0.012
	yes	56	8.27	1.892							
LINC00680	no	119	8.24	1.006	-0.884	0.378	0.543	0.466-0.619	0.326	0.074	0.333
	yes	56	8.38	0.906							
AC006129.2	no	119	4.58	1.875	1.205	0.23	0.55	0.473-0.625	0.2847	-0.082	0.283
	yes	56	4.21	1.866							
RP11-230G5.2	no	119	2.94	1.633	-1.172	0.245	0.539	0.462-0.614	0.4213	0.064	0.399
	yes	56	3.38	2.534							
BACH1-IT2	no	119	2.99	1.108	0.351	0.726	0.513	0.436-0.589	0.7799	-0.021	0.779
	yes	56	2.93	1.11							
RP11-274B21.9	no	119	3.94	1.304	0.697	0.487	0.529	0.452-0.605	0.5393	-0.048	0.526
	yes	56	3.79	1.522							
RP11-504A18.1	no	119	3.17	1.317	-0.526	0.6	0.552	0.475-0.627	0.2698	0.087	0.254
	yes	56	3.29	1.51							
RP11-713P17.3	no	119	4.84	1.813	0.943	0.347	0.527	0.450-0.603	0.573	-0.044	0.56
	yes	56	4.55	2.008							

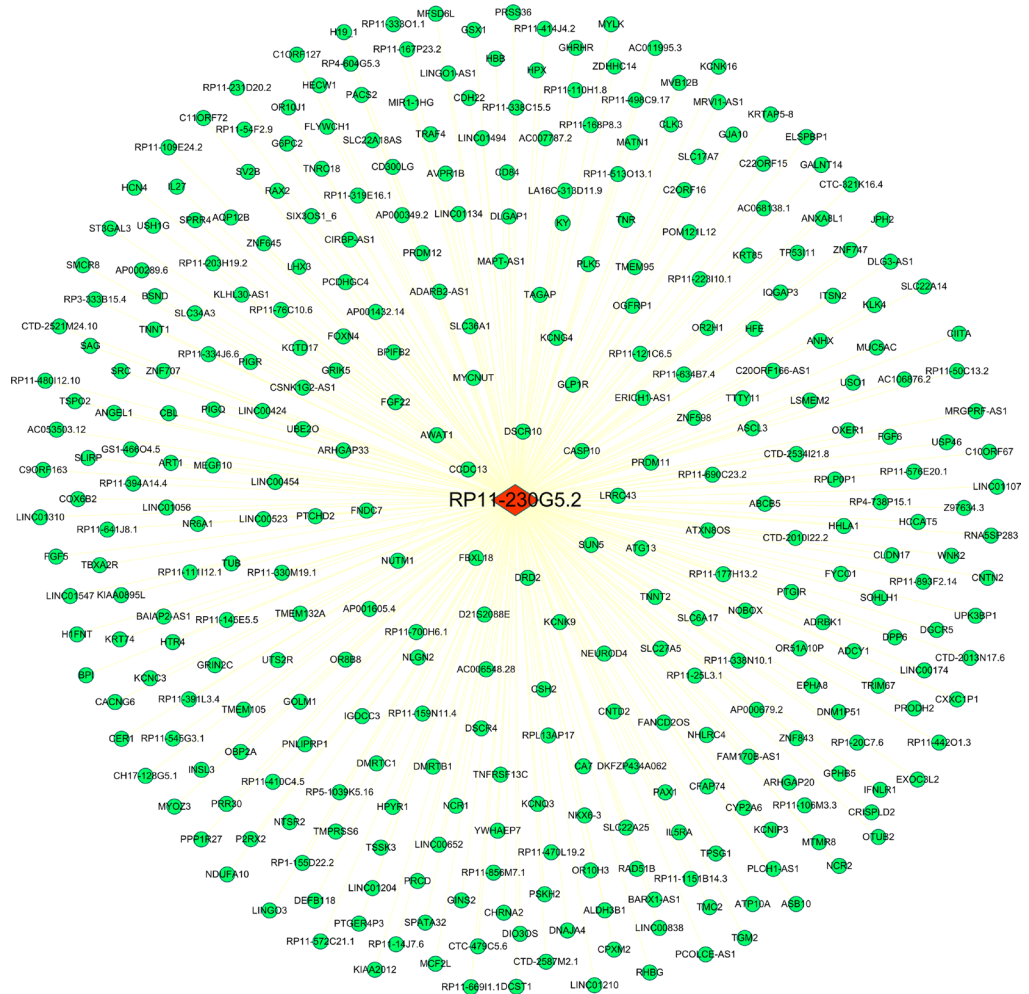




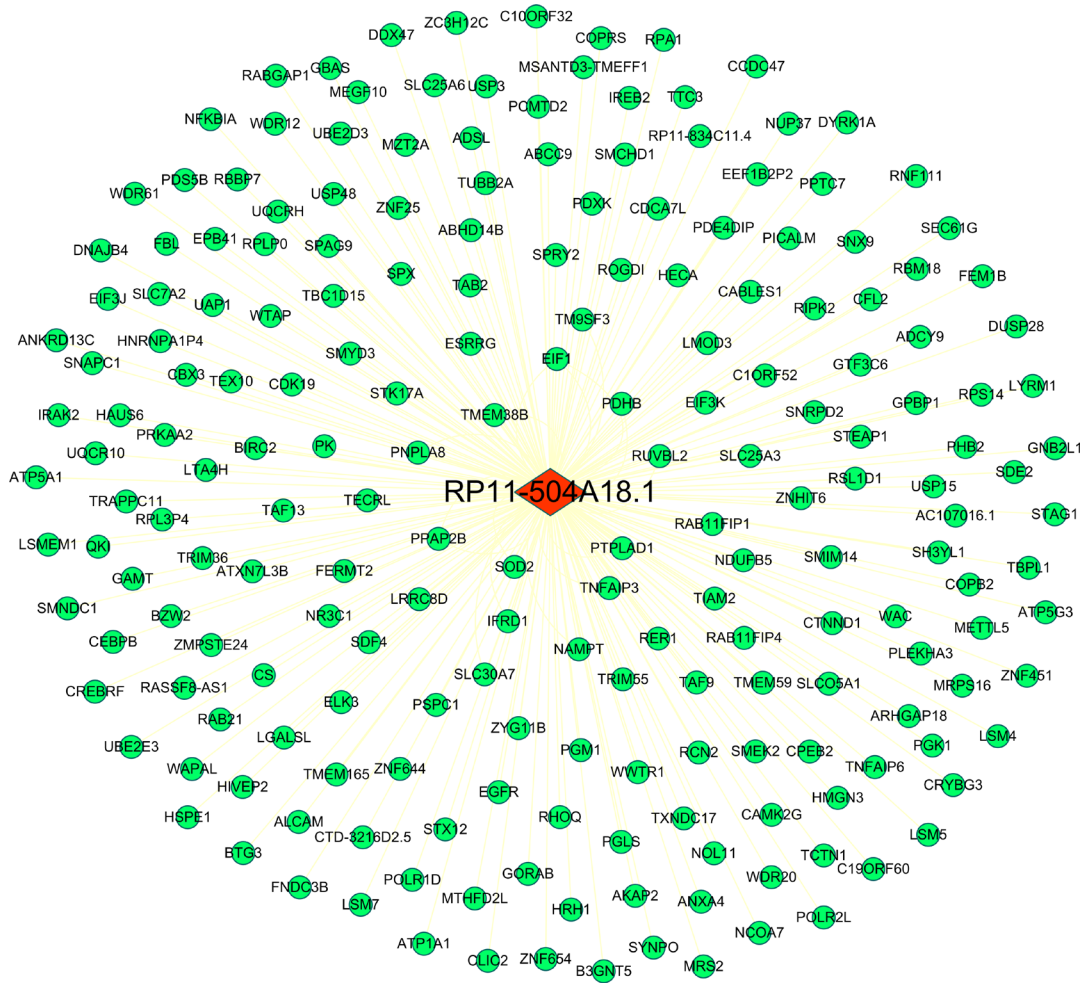
Supplementary Figure 2: Regulation network of lncRNA RP4-665J23.1 by multi experiment matrix.



Supplementary Figure 3: Regulation network of lncRNA LINC00680 by multi experiment matrix.

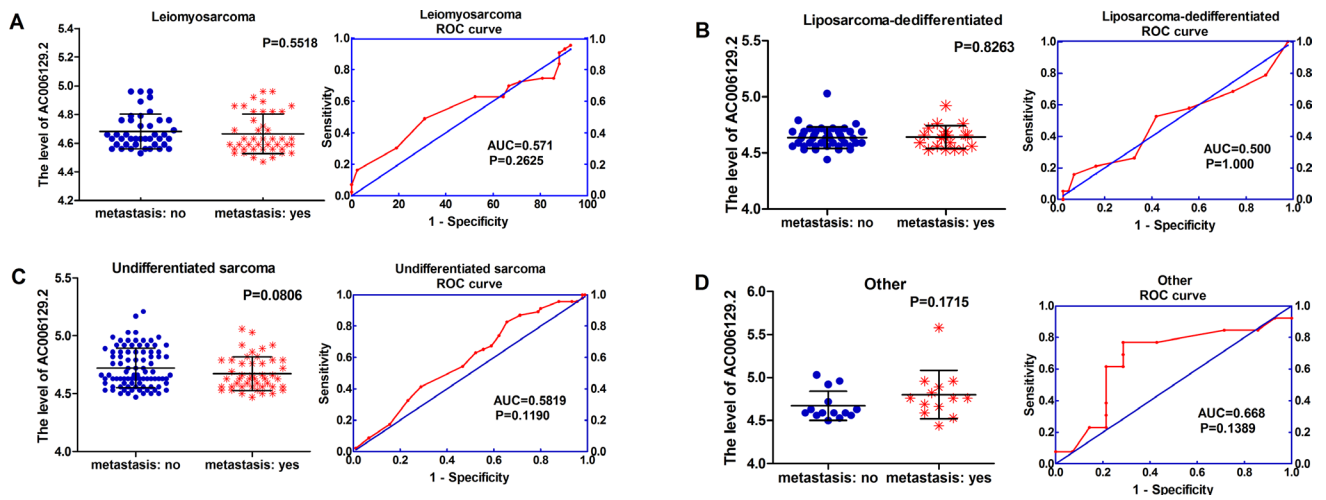


Supplementary Figure 4: Regulation network of lncRNA RP11-230G5.2 by multi experiment matrix.

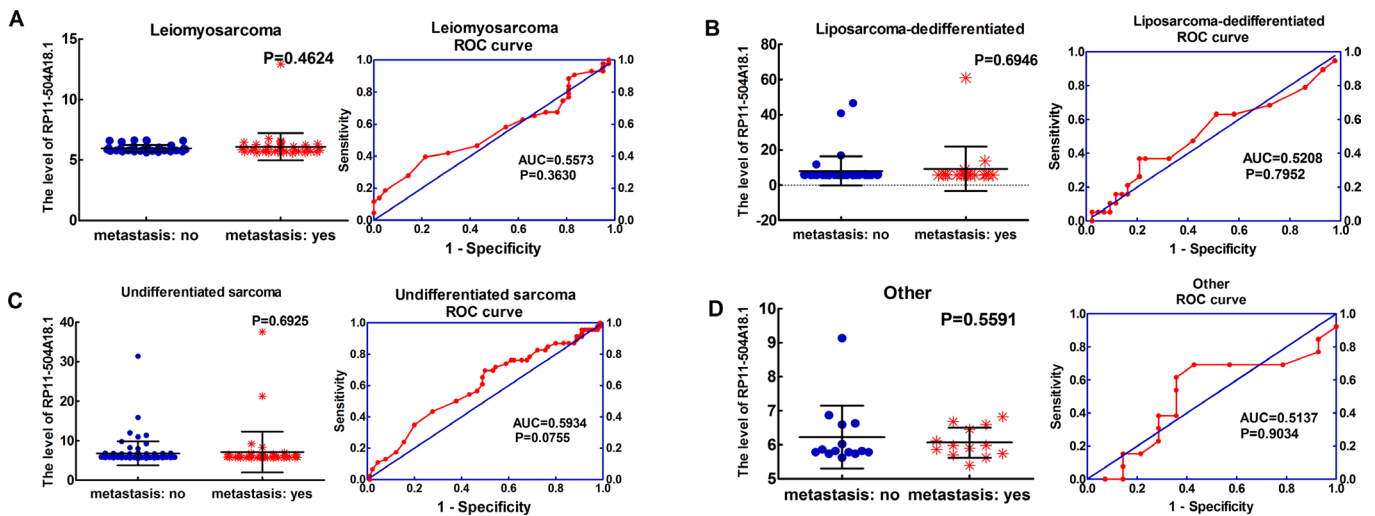


Supplementary Figure 5: Regulation network of lncRNA RP11-504A18.1 by multi experiment matrix.





Supplementary Figure 7: Relationship between AC006129.2 level and metastasis in soft-tissue sarcoma based on GEO GSE21050.



Supplementary Figure 8: Relationship between RP11-504A18.1 level and metastasis in soft-tissue sarcoma based on GEO GSE21050.