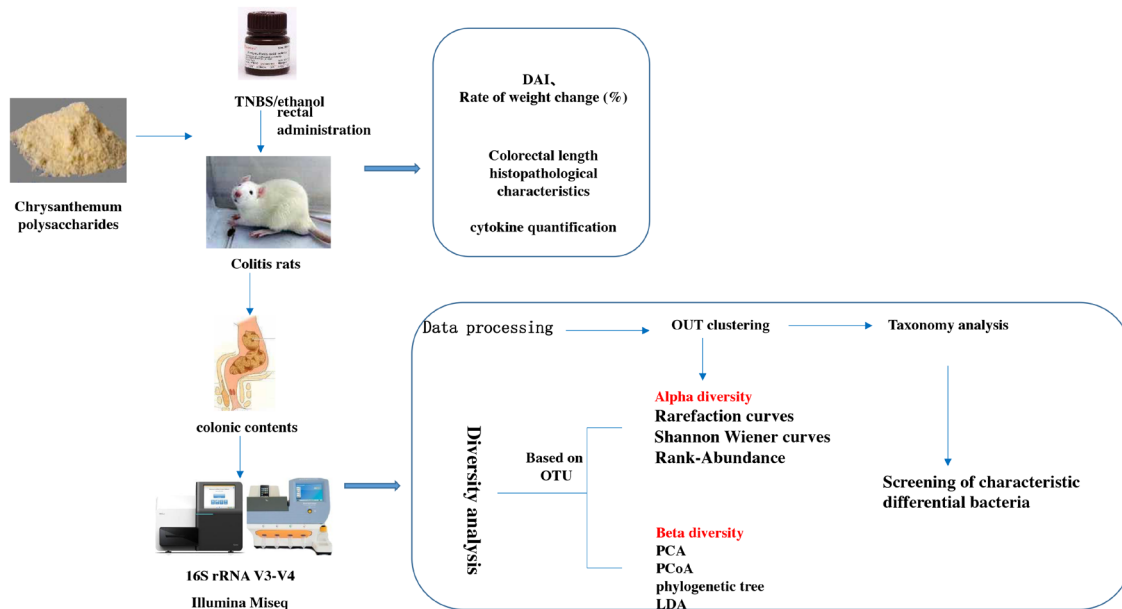
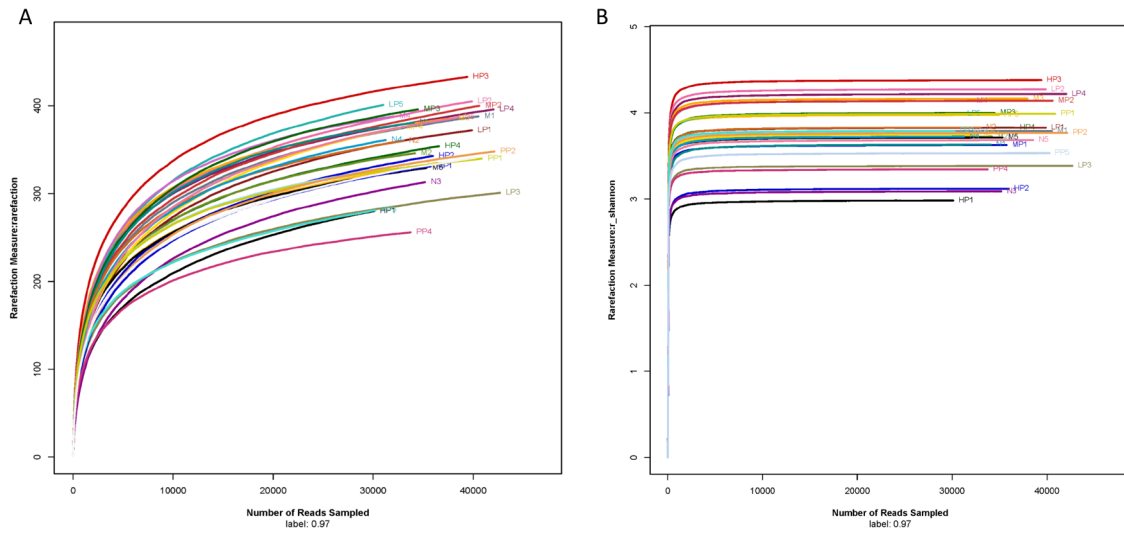


# Polysaccharides from *Chrysanthemum morifolium* Ramat ameliorate colitis rats by modulating the intestinal microbiota community

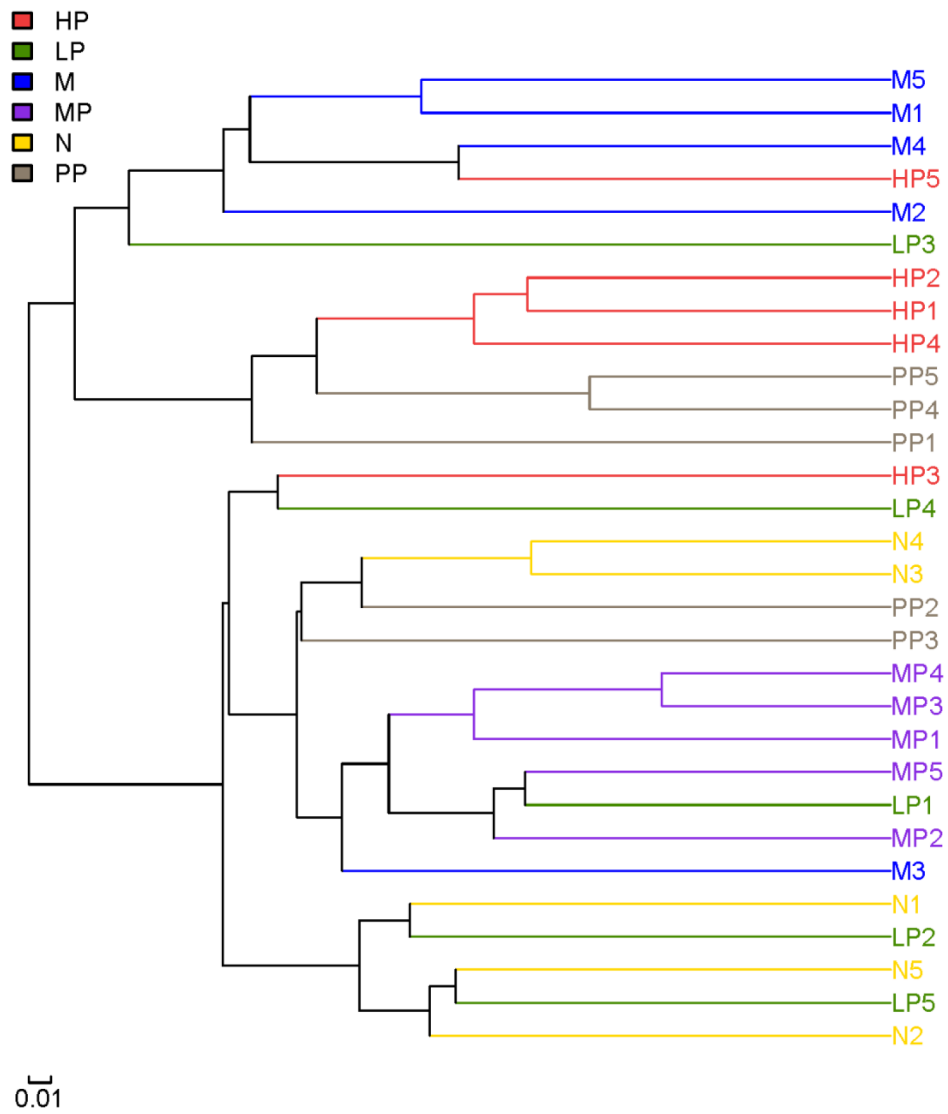
## SUPPLEMENTARY MATERIALS



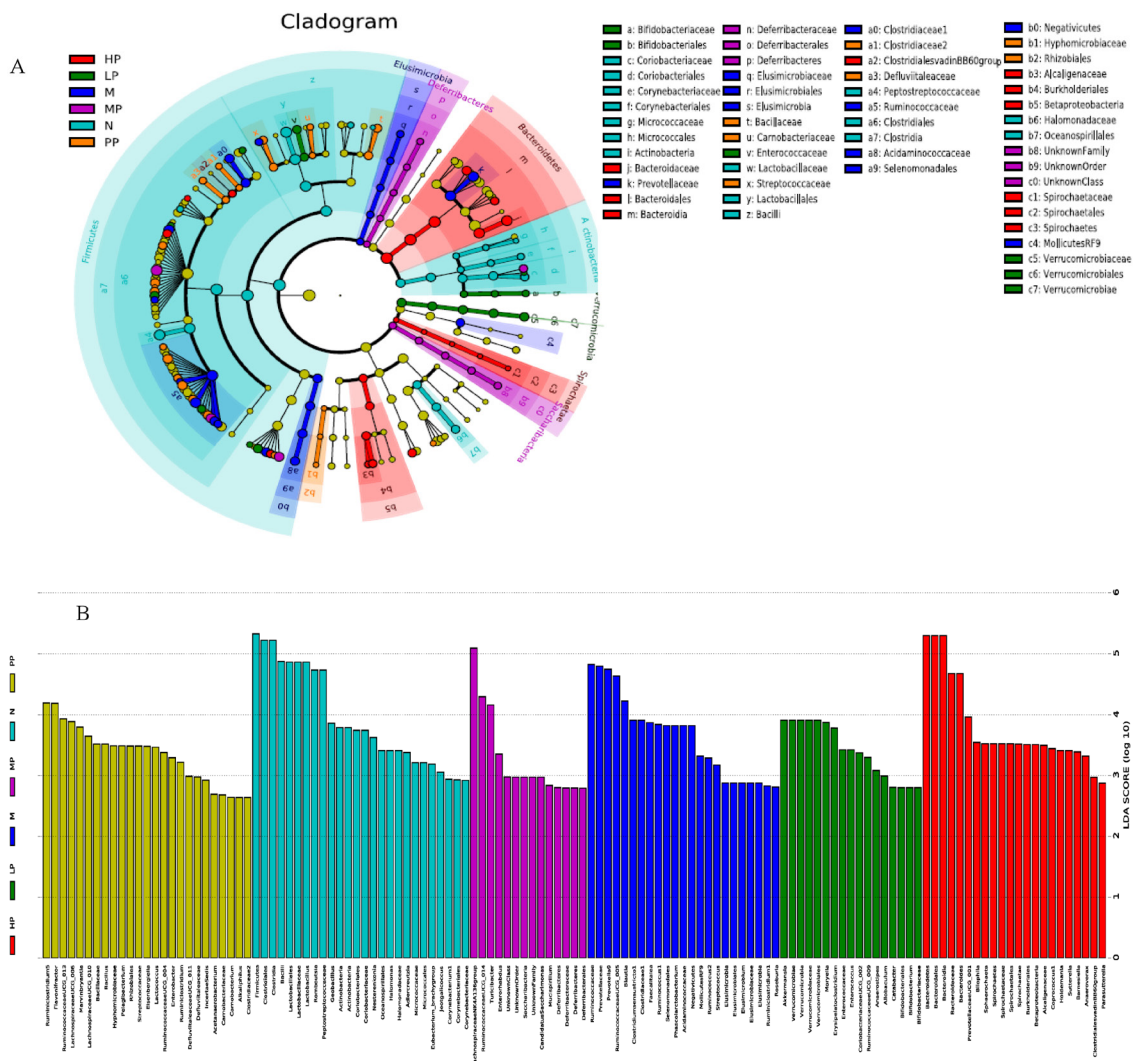
Supplementary Figure 1: The experimental strategy.



**Supplementary Figure 2:** (A) Individual rarefaction curves of OTUs clustered at 97% sequence identity. (B) Shannon Wiener curves of samples. N = 5 for each group.



Supplementary Figure 3: Multiple samples similarity tree.



**Supplementary Figure 4: LEfSE identified the most differently abundant taxon among the N, M, PP, HP, MP and LP group. (A) Cluster tree; (B) LDA scores of the taxa with significant effects.**