

Supplementary information

Long-term effects of bariatric surgery in patients with obesity and chromosome 16p11.2 microdeletion

Felipe M. Kristensson, Johanna C. Andersson-Assarsson, Noora Kanerva, Markku Peltonen, Björn Carlsson and Lena M.S. Carlsson

Supplemental figures: 1 (color)

Supplemental tables: 2

FIGURE LEGENDS

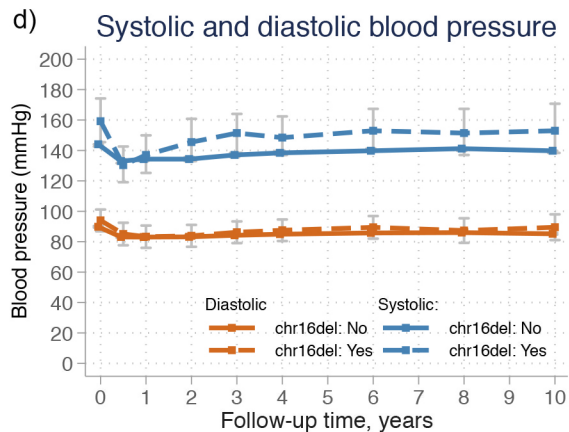
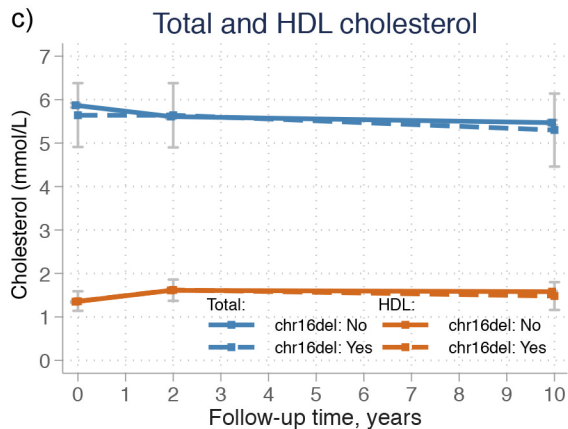
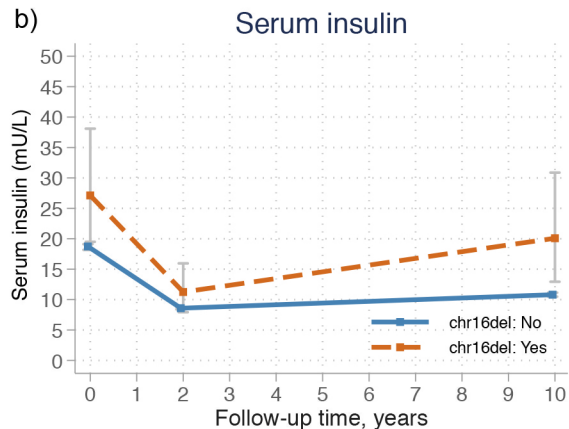
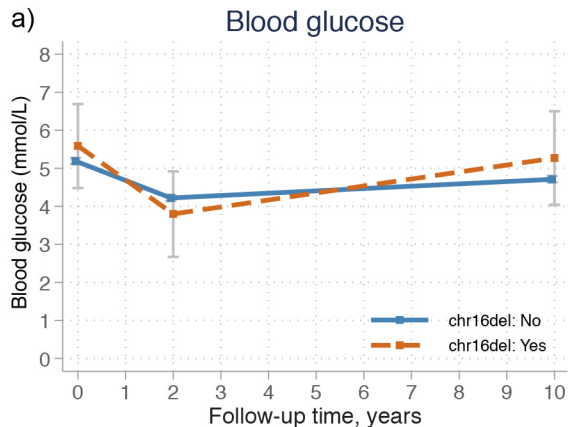
Supplementary figure 1. Estimated means from mixed-models with 95% confidence intervals for blood glucose (a), serum insulin (b), total and HDL cholesterol (c) and systolic and diastolic blood pressure (d) in carriers and non-carriers of the 16p11.2 microdeletion followed for 10 years after bariatric surgery in the SOS study. Dashed lines represent carriers of the 16p11.2 deletion while solid lines represent non-carriers.

TABLES

Supplementary table 1. Detailed follow-up information. Number of patients available and number of patients actually seen at each follow-up examination.

Supplementary table 2. Mean weight at baseline, 1 and 10 years' follow-up in carriers of the 16p11.2 microdeletion grouped by surgery type.

Supplementary figure 1. Estimated means from mixed-models with 95% confidence intervals for blood glucose (a), serum insulin (b), total and HDL cholesterol (c) and systolic and diastolic blood pressure (d) in carriers and non-carriers of the 16p11.2 microdeletion followed for 10 years after bariatric surgery in the SOS study. Dashed lines represent carriers of the 16p11.2 microdeletion while solid lines represent non-carriers.



Supplementary table 1. Detailed follow-up information in carriers and non-carriers of the chromosome 16p11.2 microdeletion

	Carriers		Non-carriers	
	Available*	Seen	Available*	Seen
Baseline	9	9	1834	1834
Year 1	8	8	1812	1744
Year 2	8	8	1797	1696
Year 3	8	8	1773	1539
Year 4	8	8	1751	1521
Year 6	8	7	1732	1439
Year 8	7	6	1702	1374
Year 10	7	6	1701	1401

* Numbers are adjusted for mortality

Supplementary table 2. Mean weight at baseline, 1 and 10 years' follow-up in carriers of the 16p11.2 microdeletion grouped by surgery type. Number of individuals are presented in brackets.

	Baseline	1 year	10 years
VBG, kg (n)	118 (4)	80.4 (4)	110 (4)
Banding, kg (n)	130 (3)	93.7 (3)	90.0 (1)
GBP, kg (n)	128 (2)	80 (1)	93.2 (1)

Abbreviations: VBG - vertical banded gastroplasty,
GBP - gastric bypass