

Tunneling nanotubes are novel cellular structures that communicate signals between trabecular meshwork cells

Kate E. Keller*, John M. Bradley, Ying Ying Sun, Yong-feng Yang, & Ted S. Acott.

Casey Eye Institute,
Oregon Health & Science University,
3181 SW Sam Jackson Park Road,
Portland, OR 97239.

* Corresponding author: Kate E. Keller, PhD

Tel: 503 494 2366

Fax: 503 418 2399

E-mail: gregorka@ohsu.edu

Figure S1a

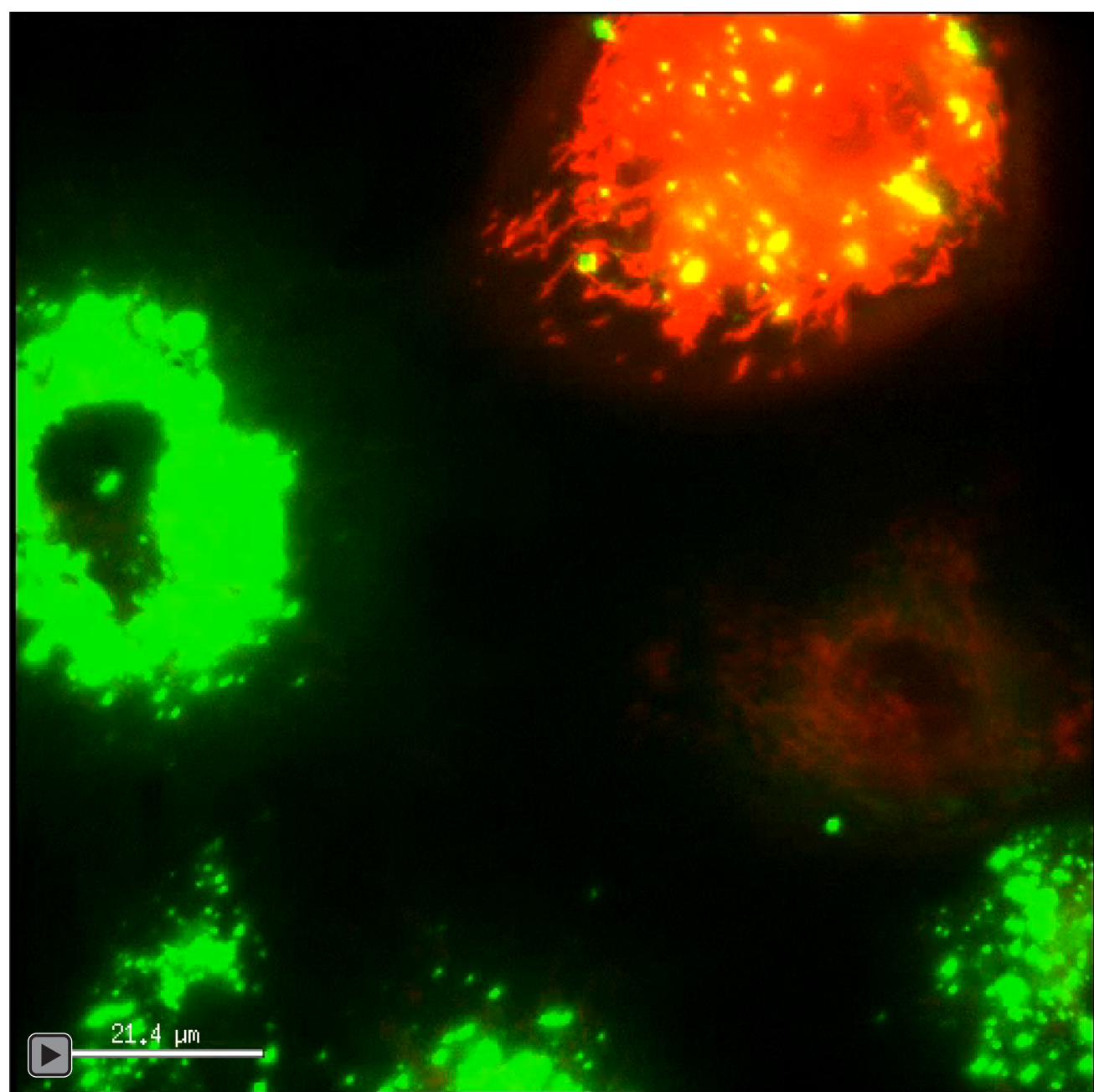


Figure S1b

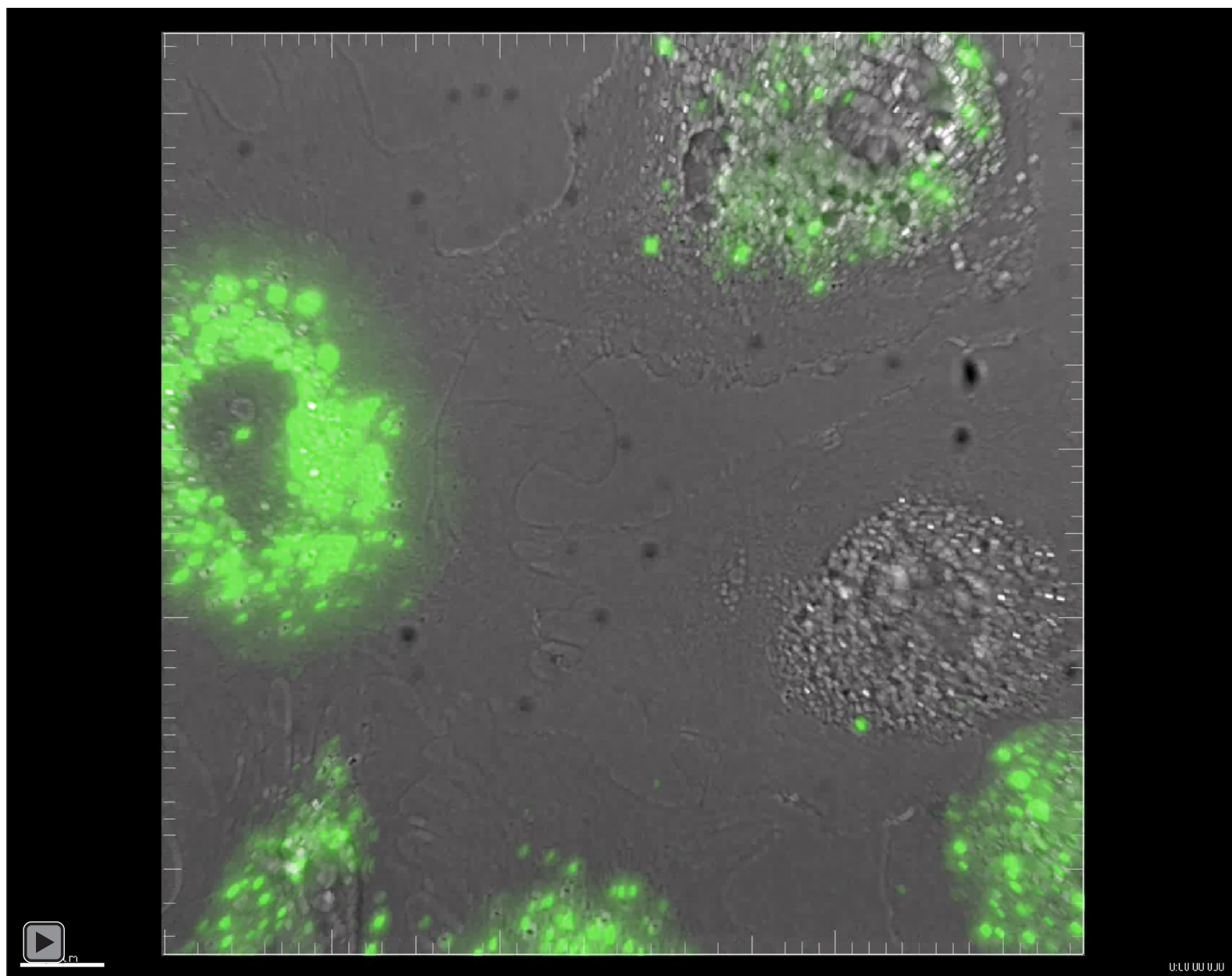


Figure S1c

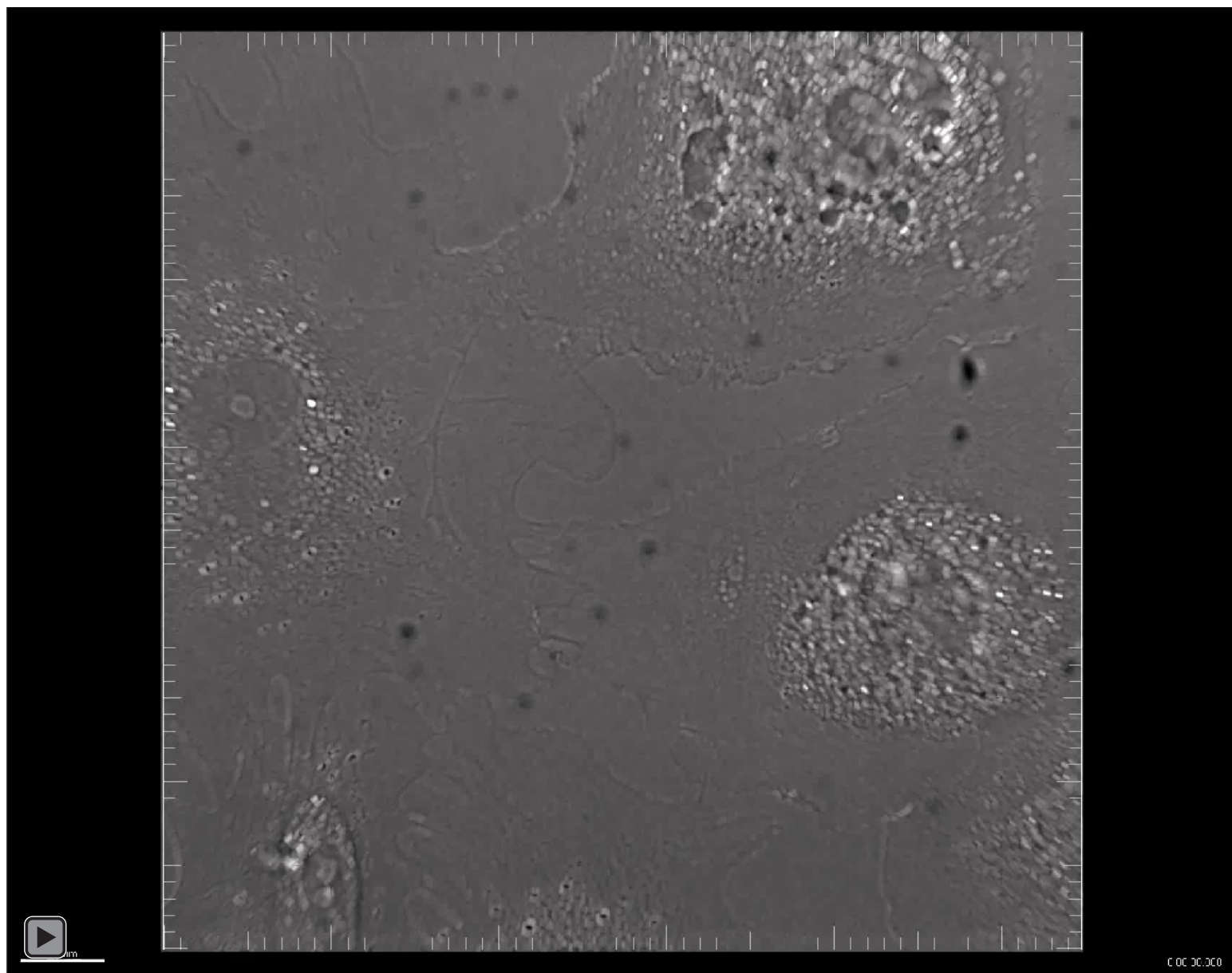


Figure S2a

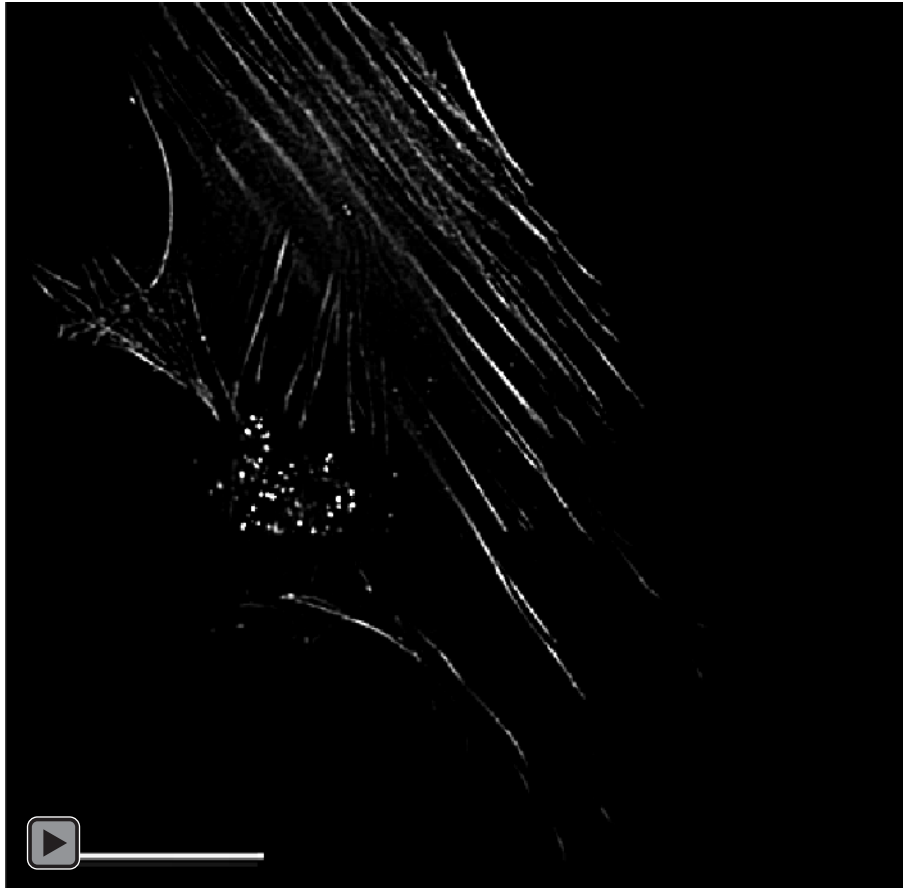


Figure S2b

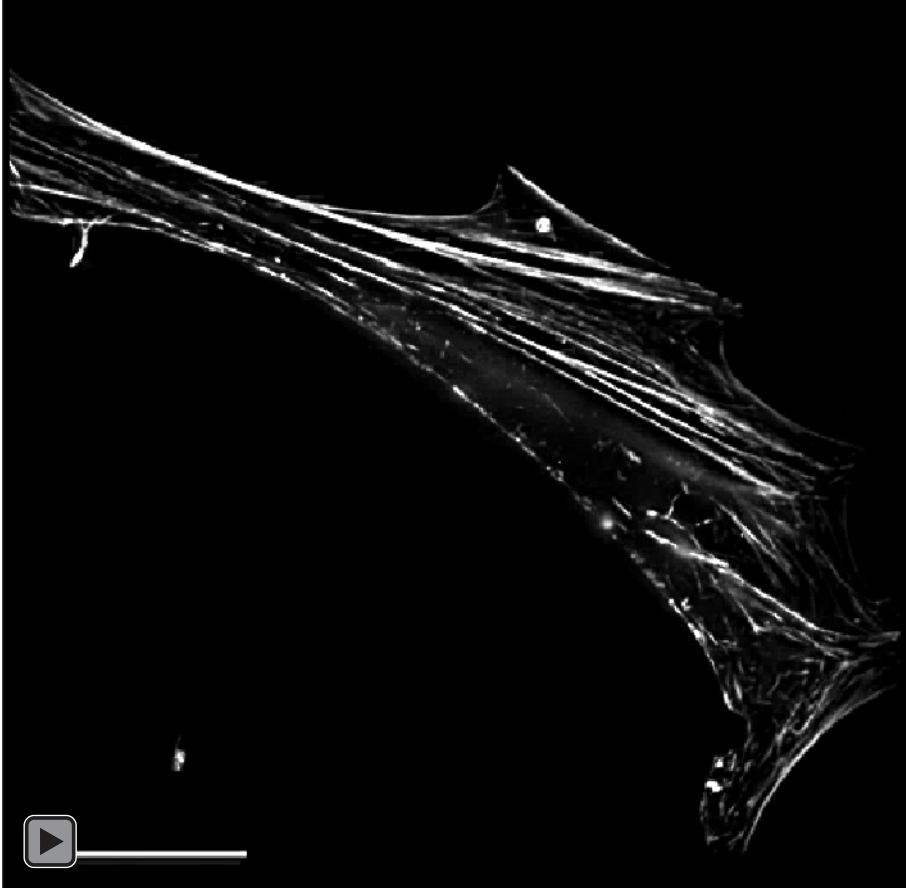


Figure S2c

