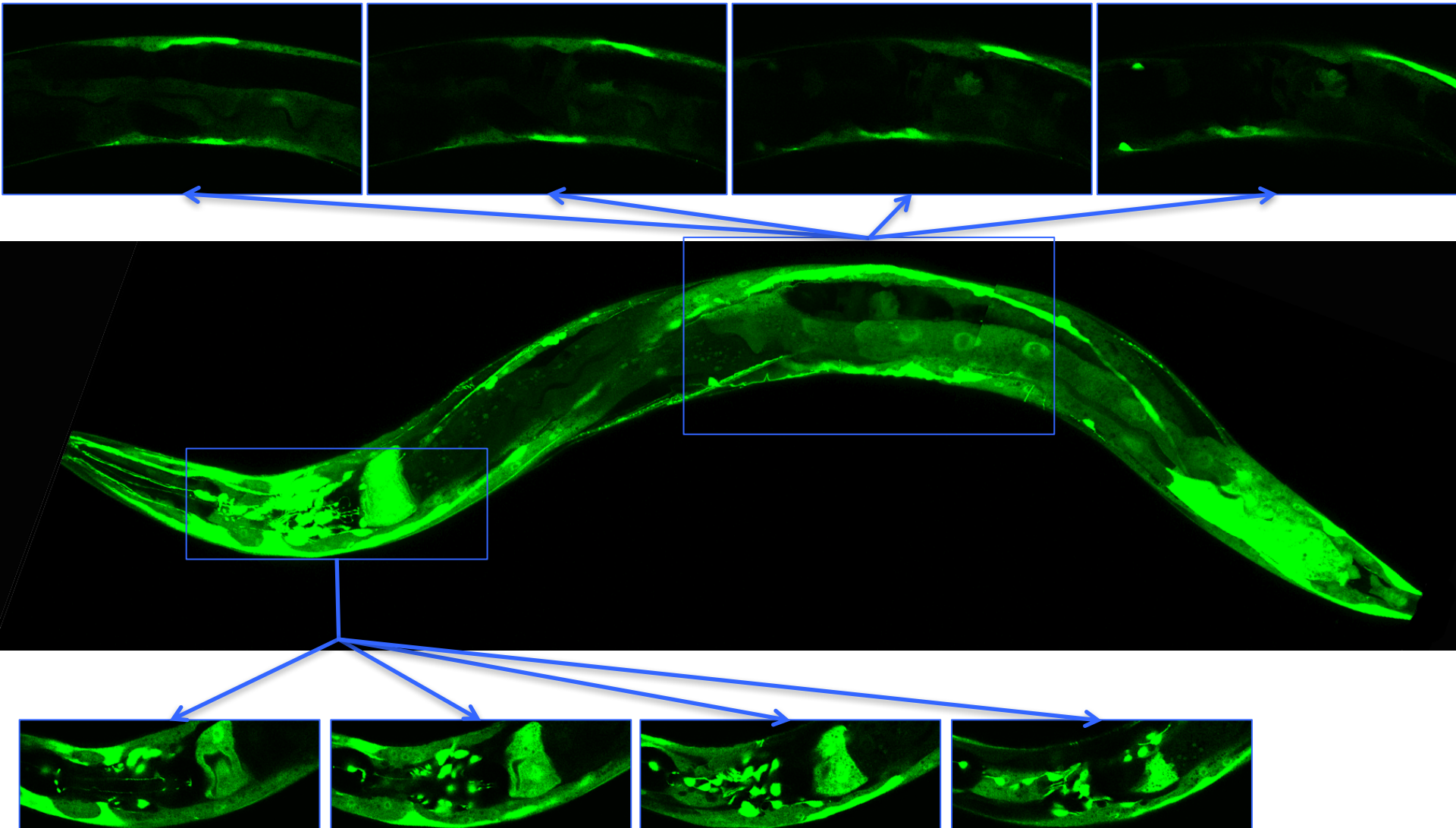


Supplemental File 1: Additional images of AVS393 (*Phpk-1::GFP*) under unstressed condition or after heat stress

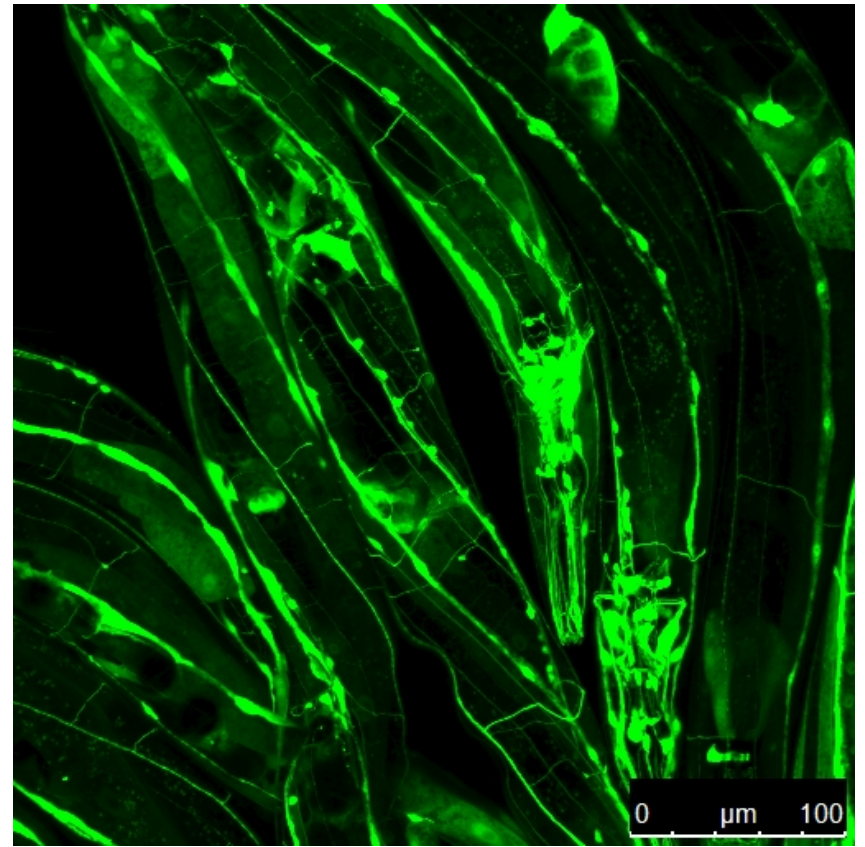
Unstressed



Middle: composite of three images with all stacks (max).

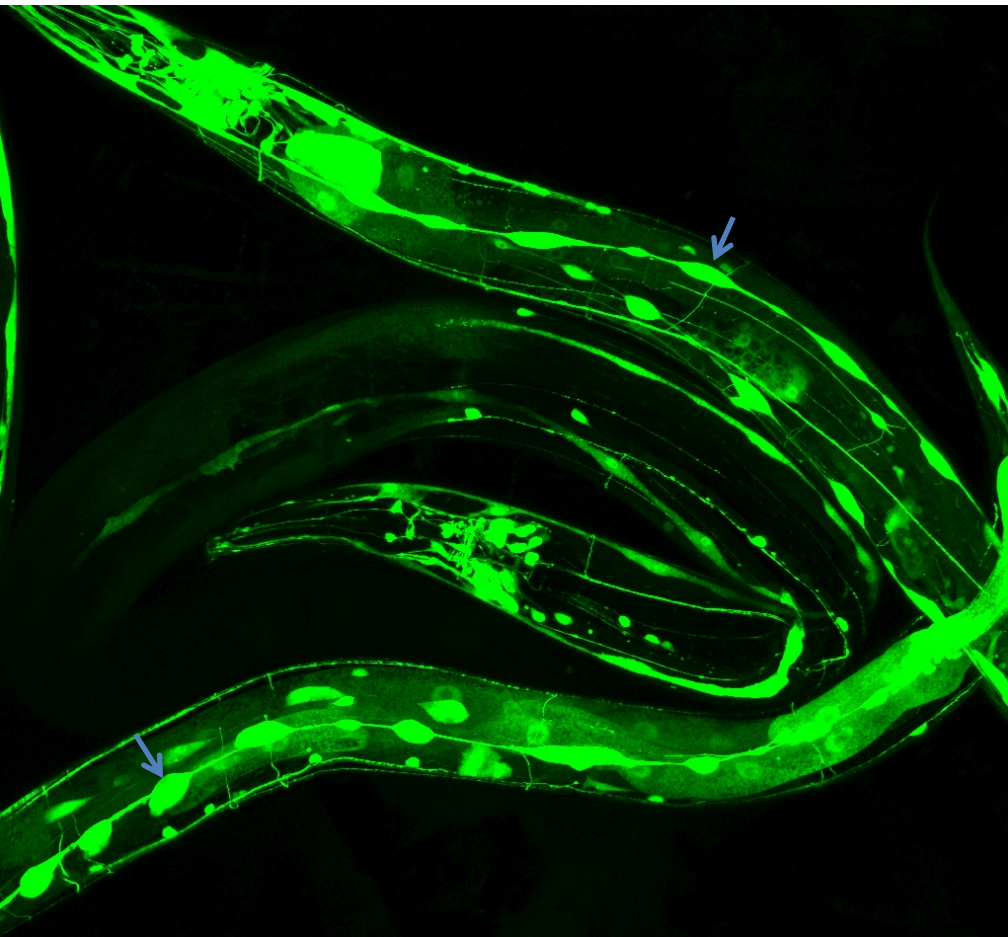
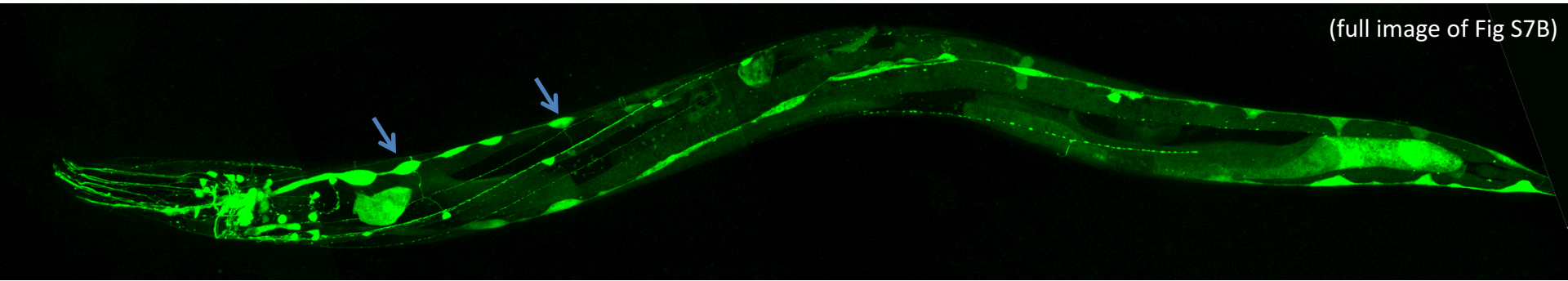
Top/Bottom: Individual z stack of highlighted regions

Unstressed



Heat shock

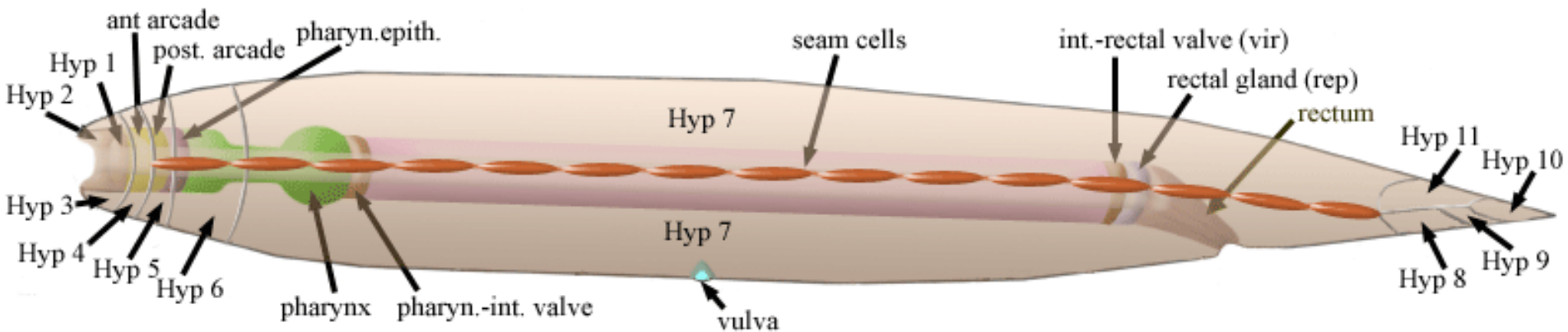
(full image of Fig S7B)



AVS393: *artEx11[Phpk-1::GFP+ pRF4(rol-6(su1006))]*

0 μm 50

- Under unstressed conditions *Phpk-1::GFP* expression is within hypodermal seam cells (1st slide).
- After heat shock *Phpk-1::GFP* expression reveals that seam cells appear larger and swollen (2nd slide).
- Animals appear “twisted” in images due to the *rol-6* mutation



Hypodermis in the adult hermaphrodite

HypFIG3