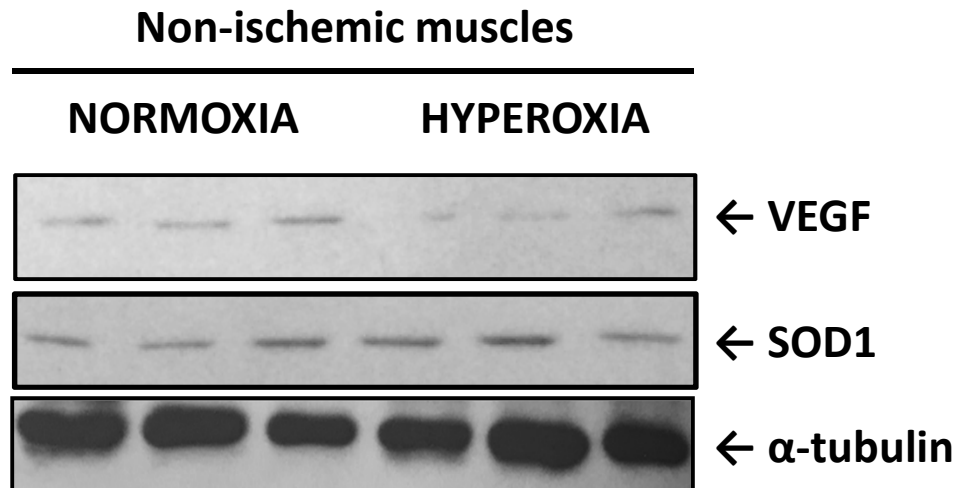


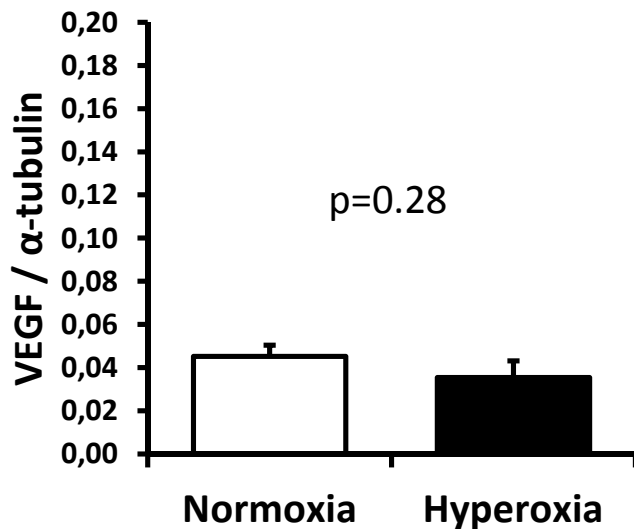
# Neonatal exposure to high oxygen levels leads to impaired ischemia-induced neovascularization in adulthood

Raphael Mathieu, Sylvie Dussault, Michel Desjarlais, François Rivard, Wahiba Dhahri, Anik Cloutier, Anne-Monique Nuyt and Alain Rivard

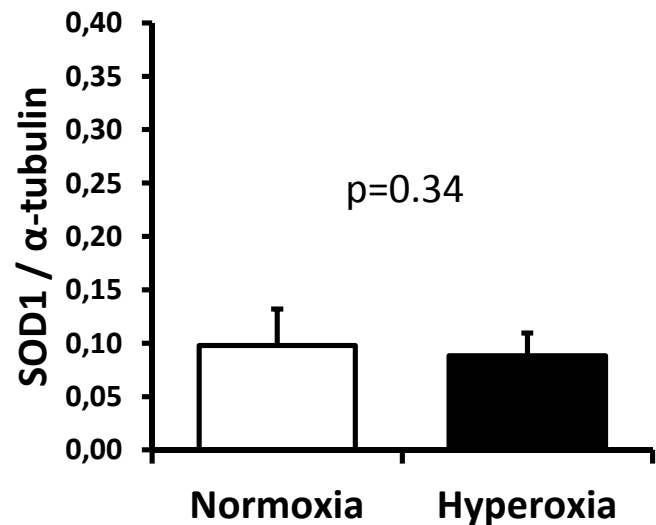
## A



## B



## C



**Supplemental Figure: Effect of perinatal exposure to hyperoxia on VEGF and SOD1 expression in non-ischemic hindlimb muscles.** Representative Western blots (A) and quantification of VEGF (B) and SOD1 (C) expression in the different conditions. p=ns for both VEGF (p=0.28) and SOD1 (p=0.34).