

## Supplementary Figure Legends

### Figure S1. Sequence alignment of the *TGTT1* elements

Sequence identities over 70% were shaded in blue. The TSD site, 5'LTR, PBS, PPT and 3'LTR regions are indicated using red lines and arrows.

### Figure S2. Wet laboratory validation of the TGTT and AACA elements.

Each element was randomly selected and analyzed from each family. A schematic view of the LTR-RT, with the location of the region that was amplified (dashed pink boxes), a picture of the PCR amplification of the LTRs using DNA material of the four Rosaceae species (see Table S1), and the alignments of the sequenced PCR products together with the sequences that were mined from the genome sequence are provided. The positions of TSDs, beginnings and ends of LTRs, PBS and PPT are also indicated.

### Figure S3. Multiple alignments of PBS sites from TGTT, AACA and normal TGCA elements of the *Ale* lineage.

A 20-bp region of each PBS site was extracted from all of the *TGTT* and *AACA* elements, as were the consensus sequences of the other four *Copia Ale* families from pear [38]. Sequence identities over 70% are shaded in blue.

### Figure S4. INT phylogenetic relationships among TGTT, AACA and normal TGCA elements.

The INT domains (the integrase core domain, pfam00665) of 67 elements from the six *Copia-like TGTT* and *AACA* families and the consensus sequences of each normal *Copia TGCA* family from pear [38] were used to build the phylogenetic tree. The *TGTT* and *AACA* elements are indicated by various colored branches, and the normal *TGCA* families are shown in gray. The nucleotide sequence distances are indicated by the scales.

### Figure S5. Evidence of transcriptional activity in five *TGTT* and *AACA* elements.

For each element, the whole-nucleotide sequences were used as queries to construct the HISAT alignments using the RNA-seq data from the NCBI species Sequence Read Archive database. Normal short pair reads are shown in the gray bar. Too long paired reads are shown in the purplish red bar. One-sided sequences are indicated by green or blue boxes.

# Figure S1.

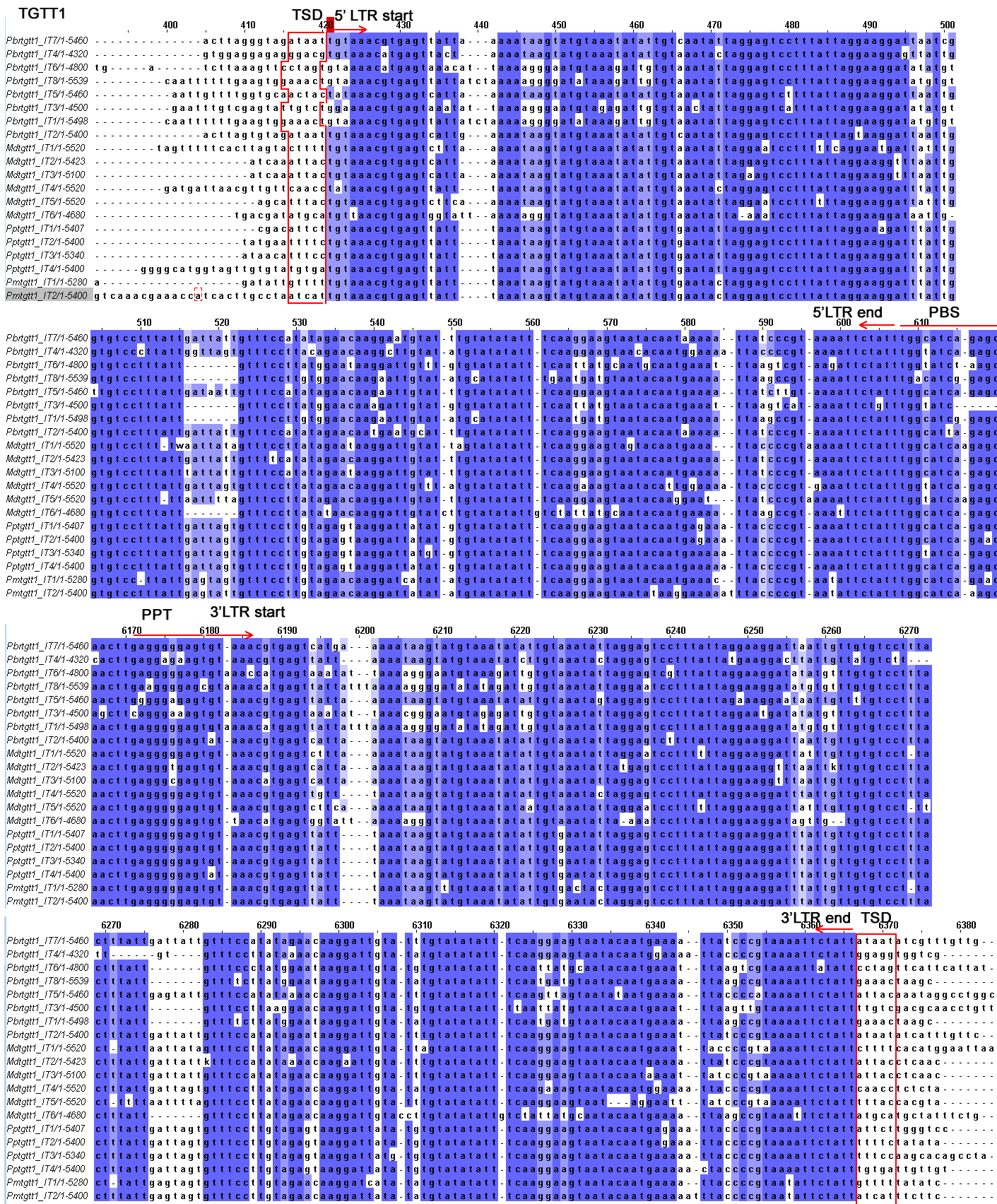
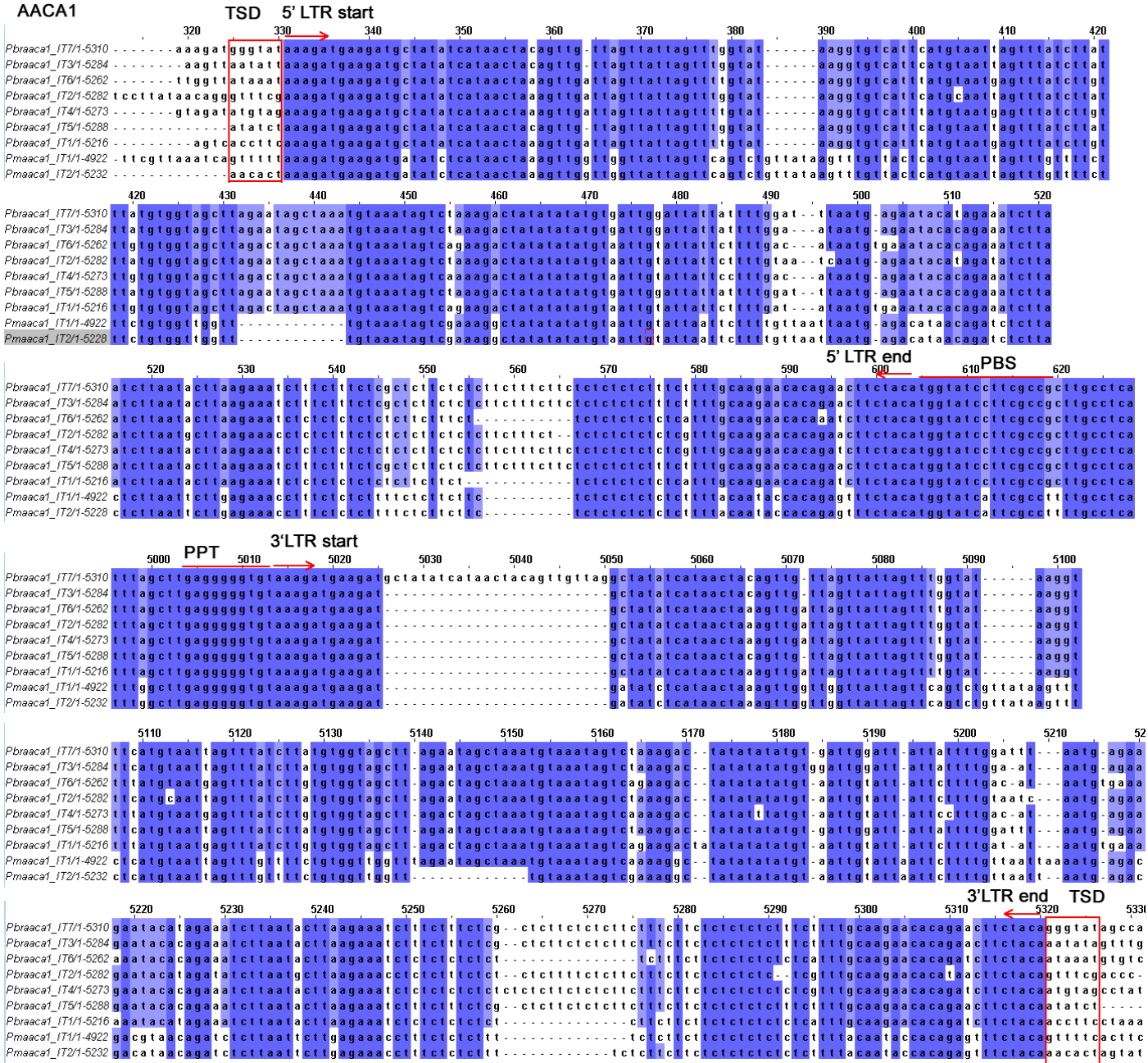
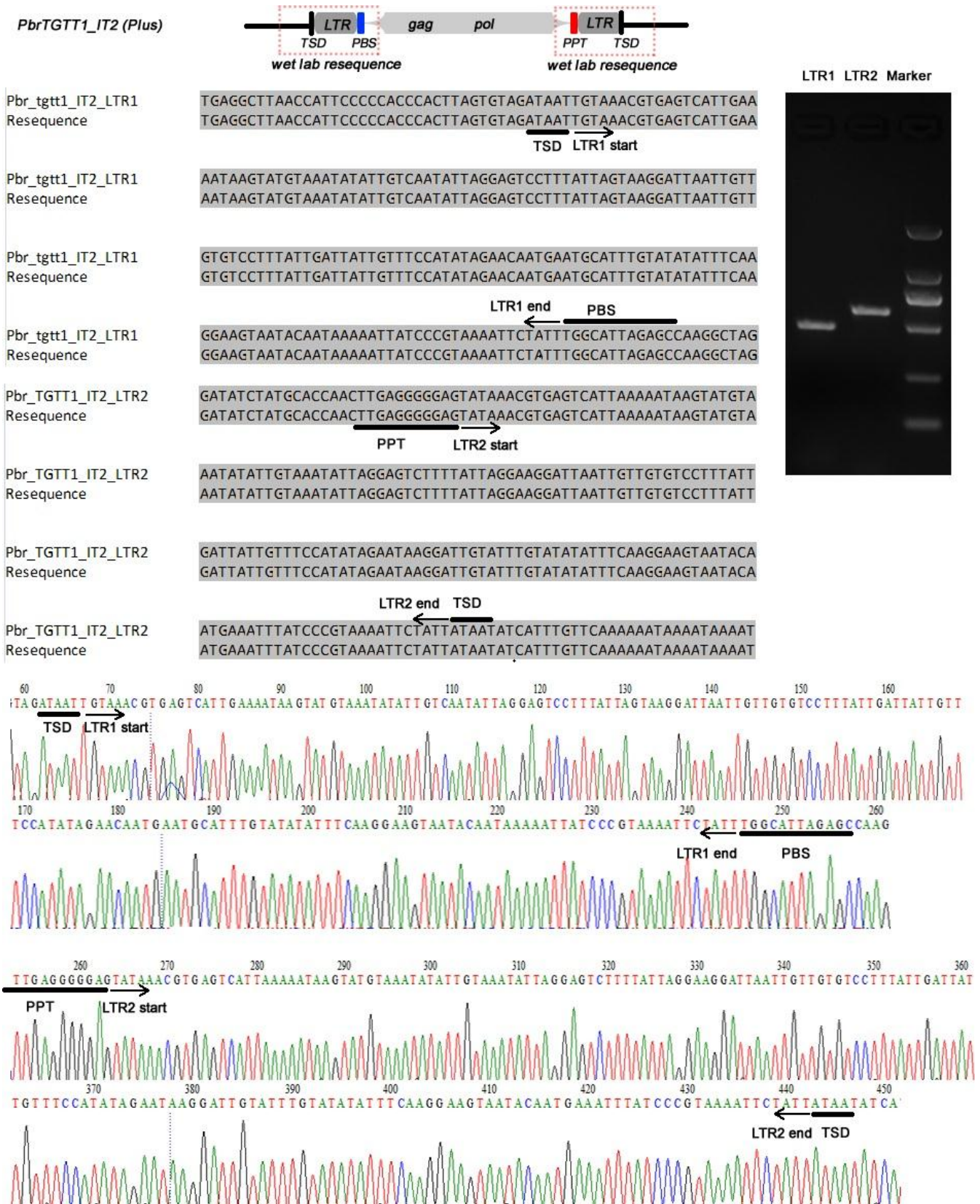


Figure S1.



**Figure S2.**



# Figure S2.

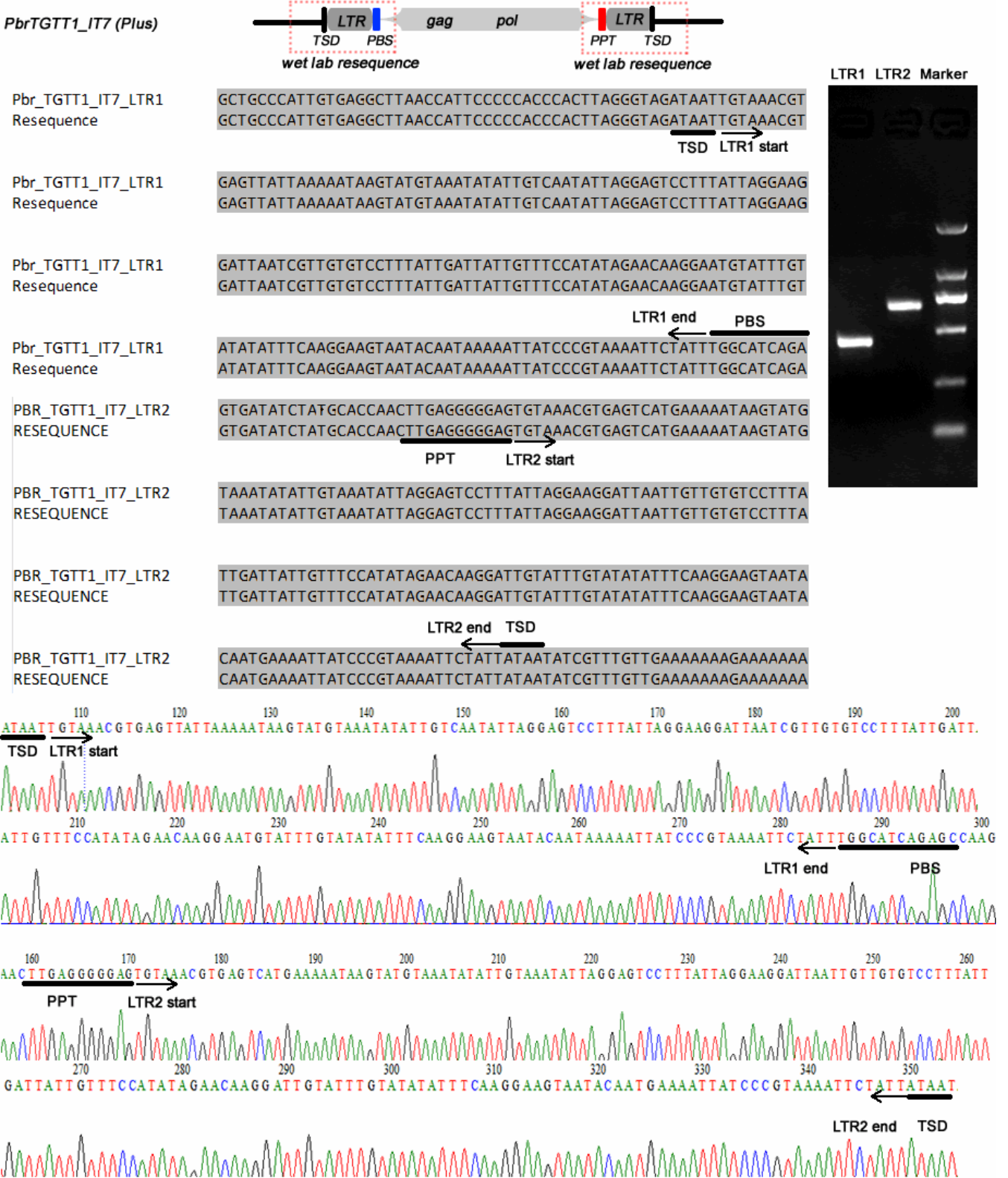


Figure S2.

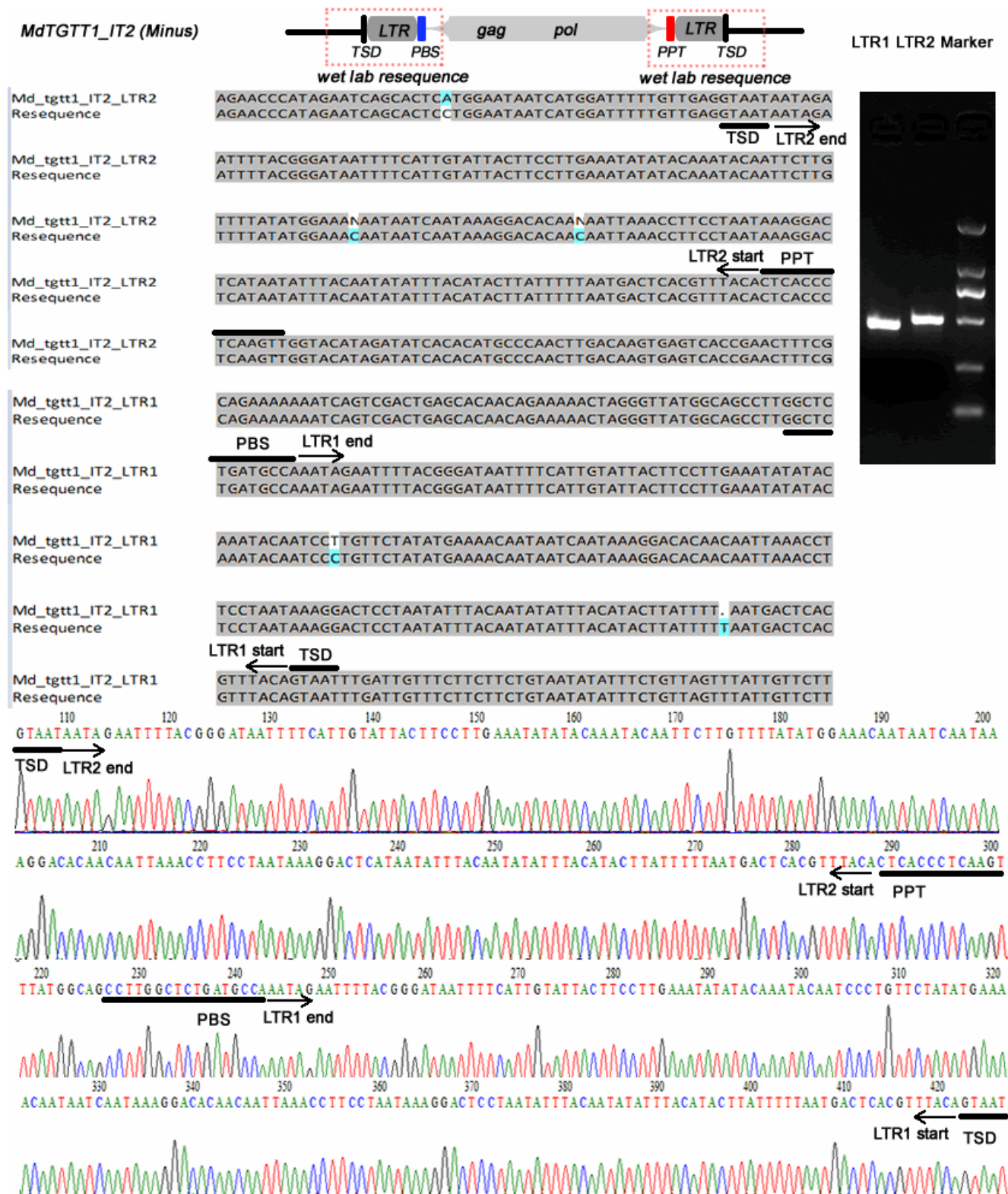


Figure S2.

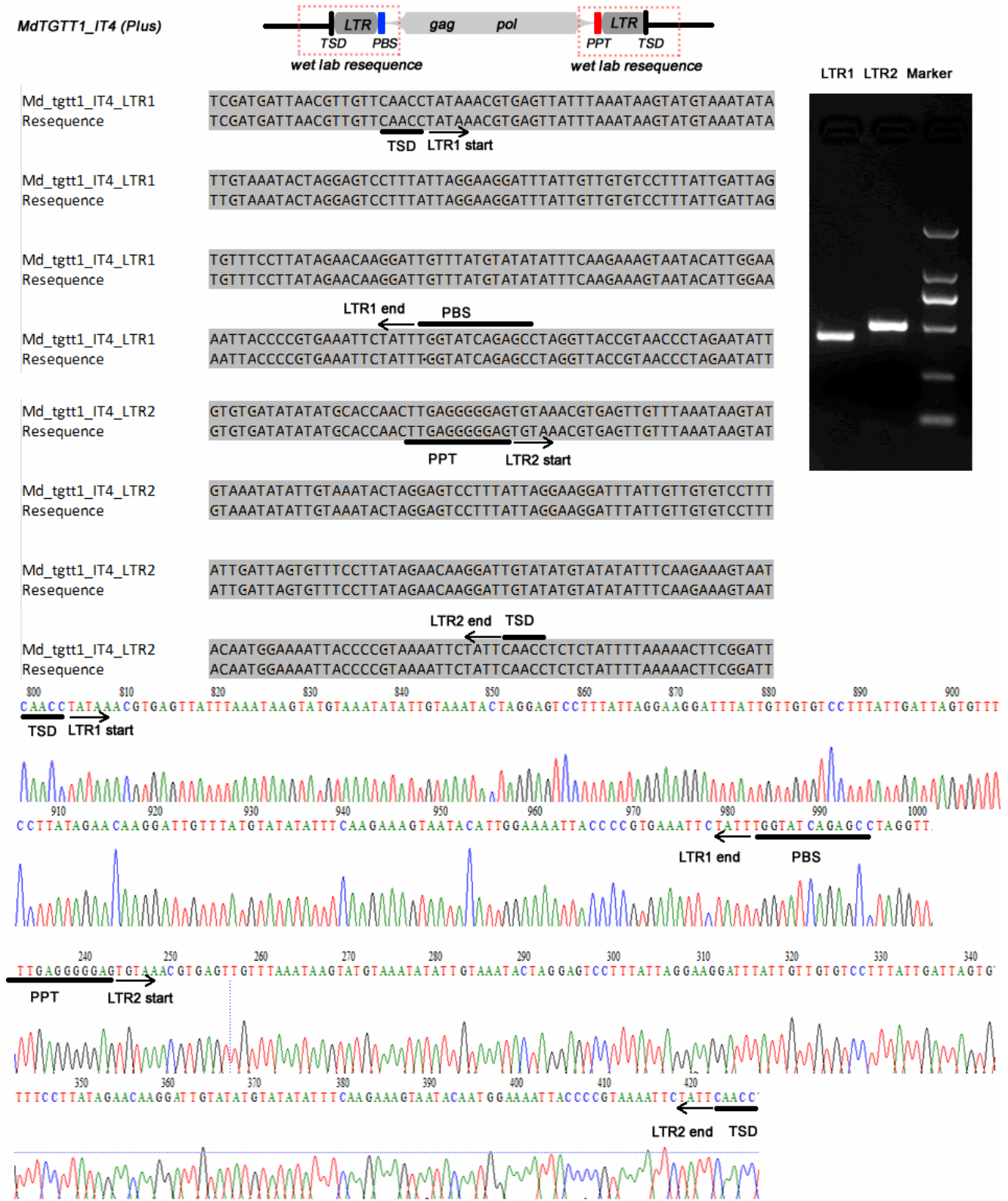
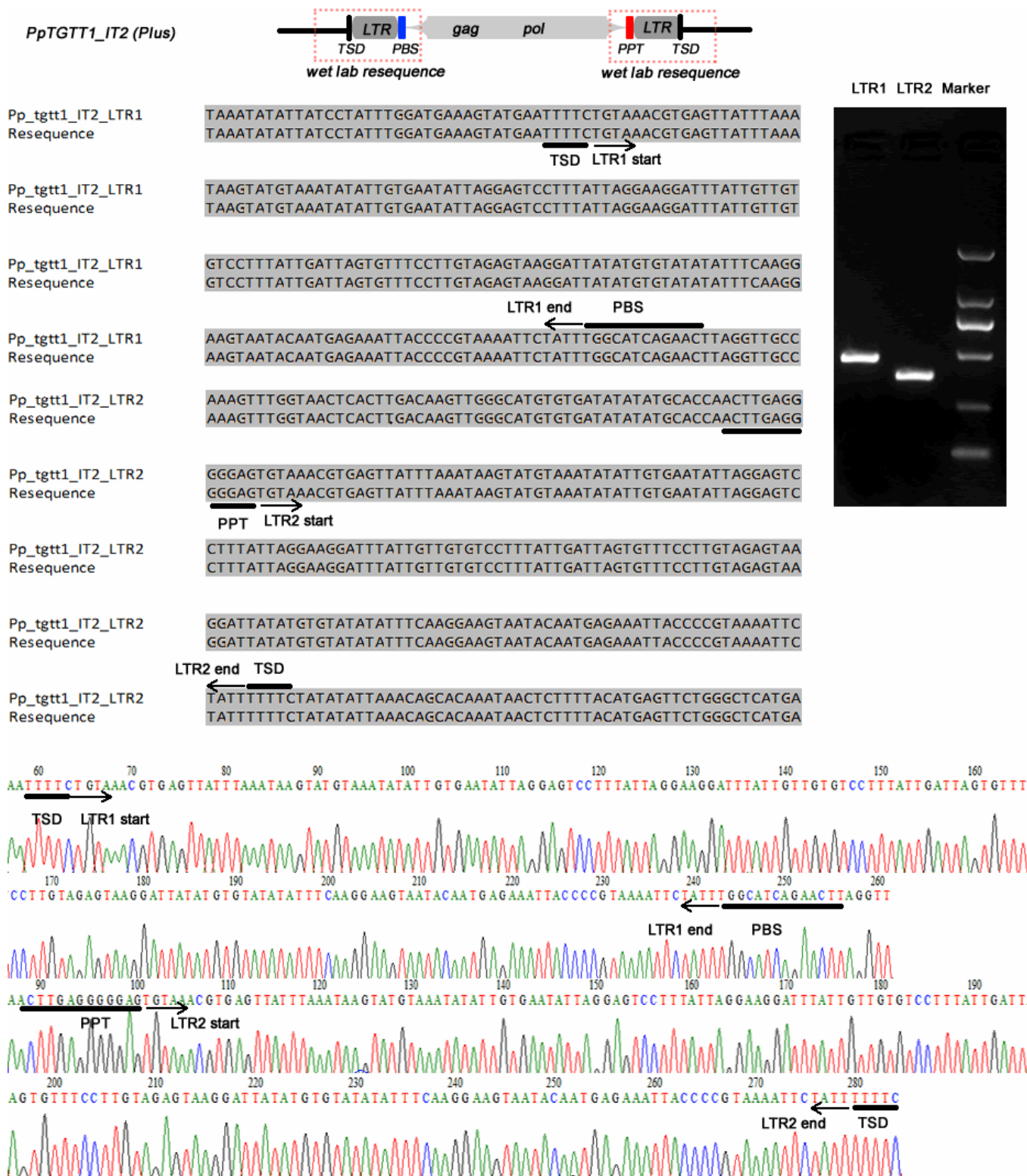


Figure S2.





**Figure S2.**

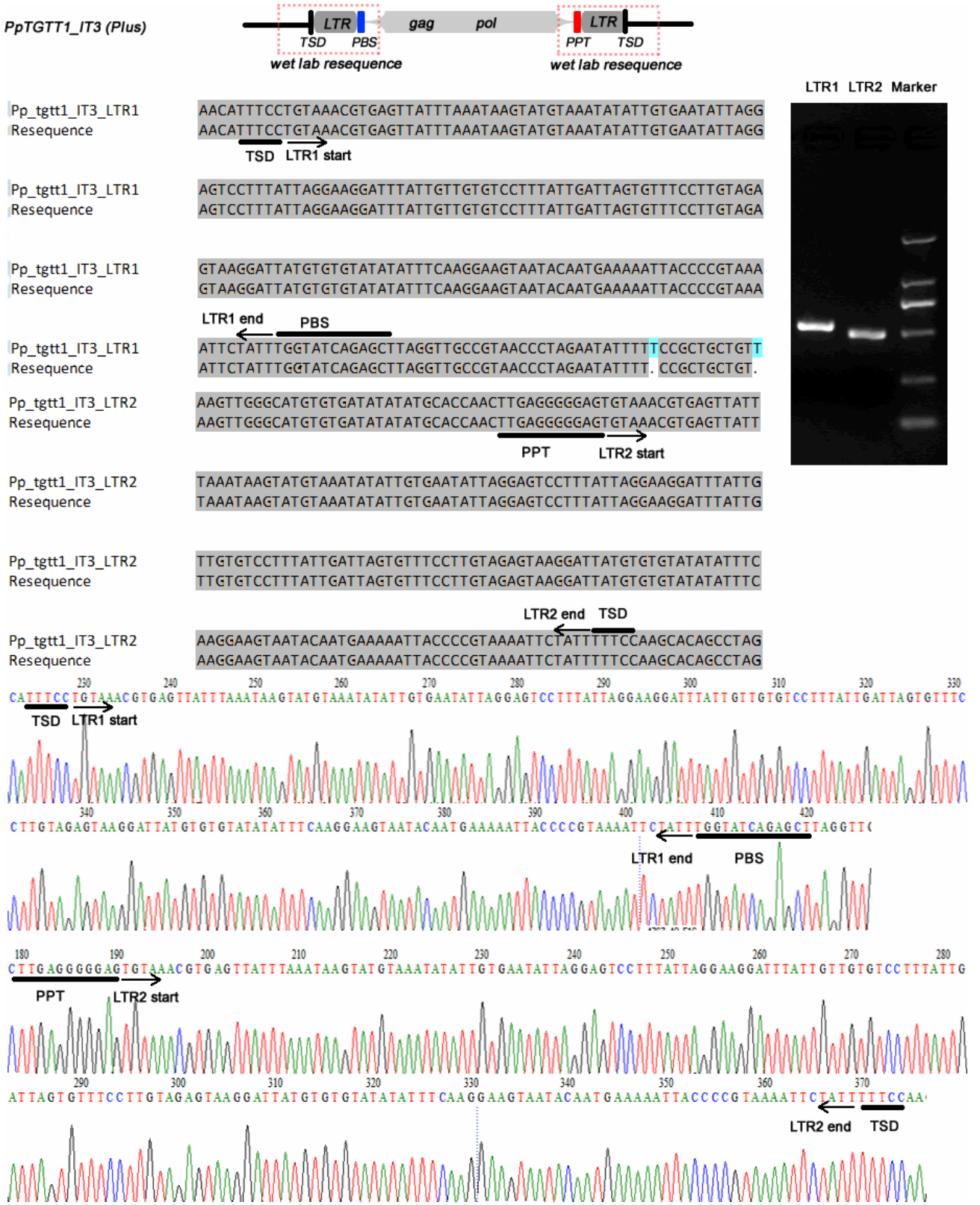


Figure S2.

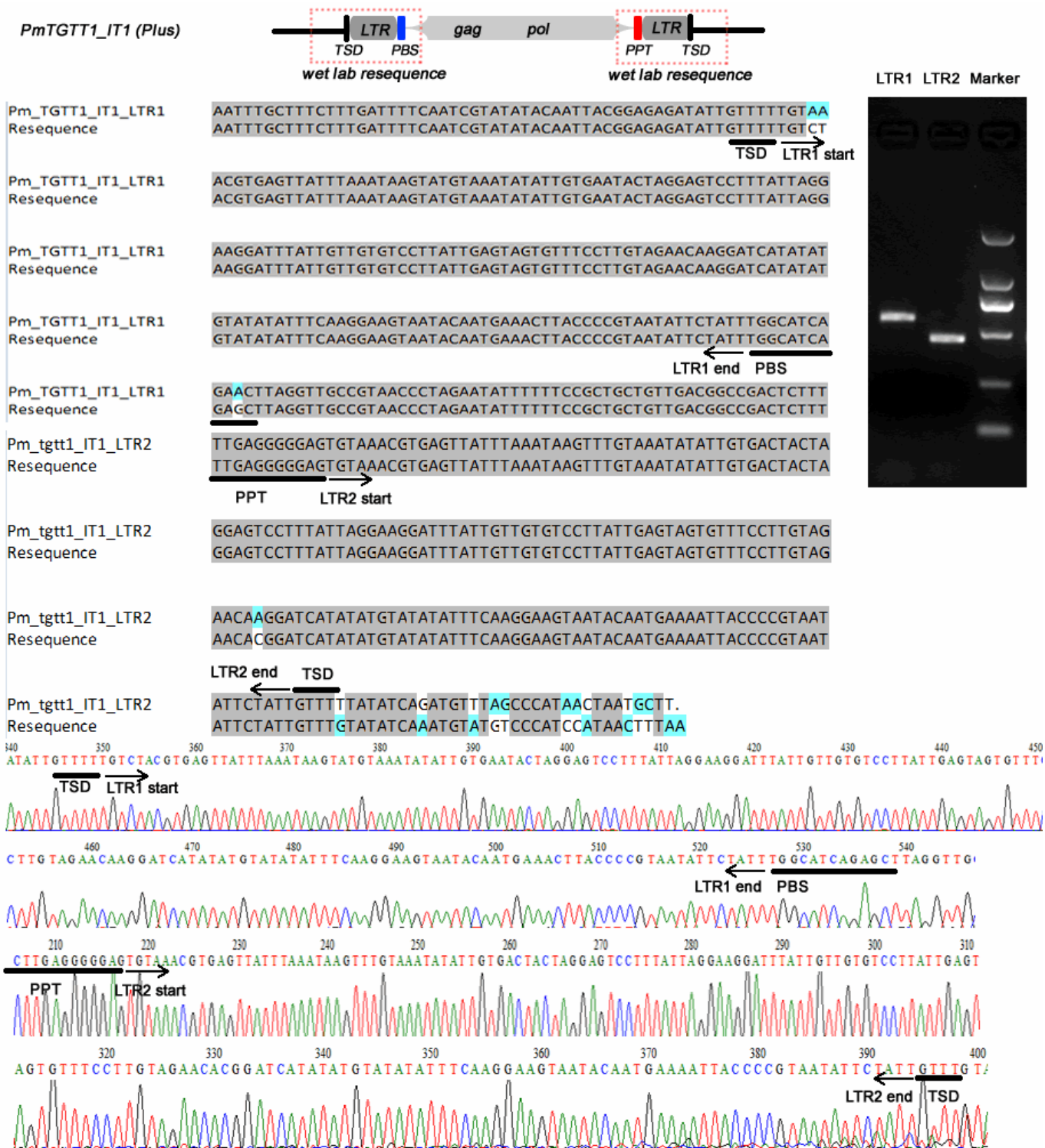
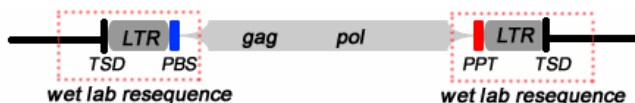


Figure S2.

*PbrTGTT2\_IT14 (Plus)*



*Pbr\_tgtt2\_IT14\_LTR1*  
Resequencing

GCTGTGATCTCATAGGCAATGTACCTGAGATTGCAAGTATATGATGTTAGCGTGAGTCAA  
GCTGTGATCTCATAGGCAATGTACCTGAGATTGCAAGTATATGATGTTAGCGTGAGTCAA

TSD LTR1 start

*Pbr\_tgtt2\_IT14\_LTR1*  
Resequencing

TATTAGGAAAAATAGGAATGTAATAATAGGAGTCCTTTATTAAGTAGGTTTGTGTATA  
TATTAGGAAAAATAGGAATGTAATAATAGGAGTCCTTTATTAAGTAGGTTTGTGTATA

*Pbr\_tgtt2\_IT14\_LTR1*  
Resequencing

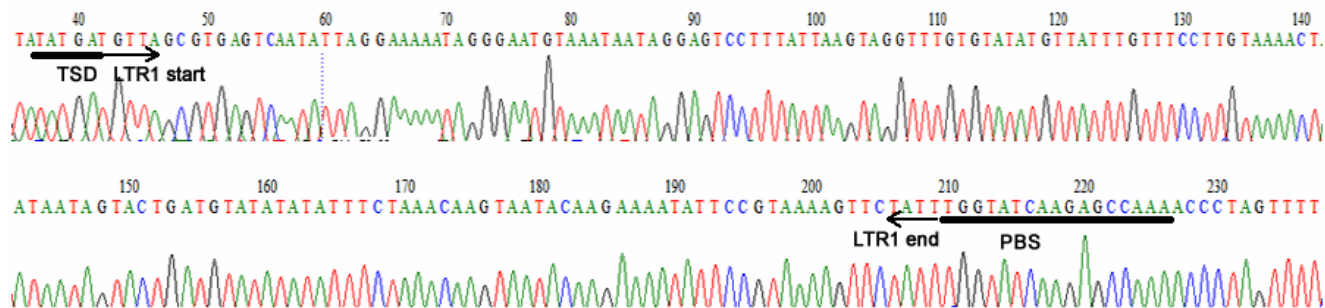
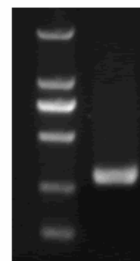
TGTTATTTGTTTCCTTGTAAAATAAATAGTACTGATGTATATATATTTCTAAACAAGT  
TGTTATTTGTTTCCTTGTAAAATAAATAGTACTGATGTATATATATTTCTAAACAAGT

*Pbr\_tgtt2\_IT14\_LTR1*  
Resequencing

AATACAAGAAAAATATCCGTAAGTTCTATTTGGTATCAAGAGCCAAAACCTAGTT  
AATACAAGAAAAATATCCGTAAGTTCTATTTGGTATCAAGAGCCAAAACCTAGTT

LTR1 end PBS

Marker LTR1



# Figure S2.

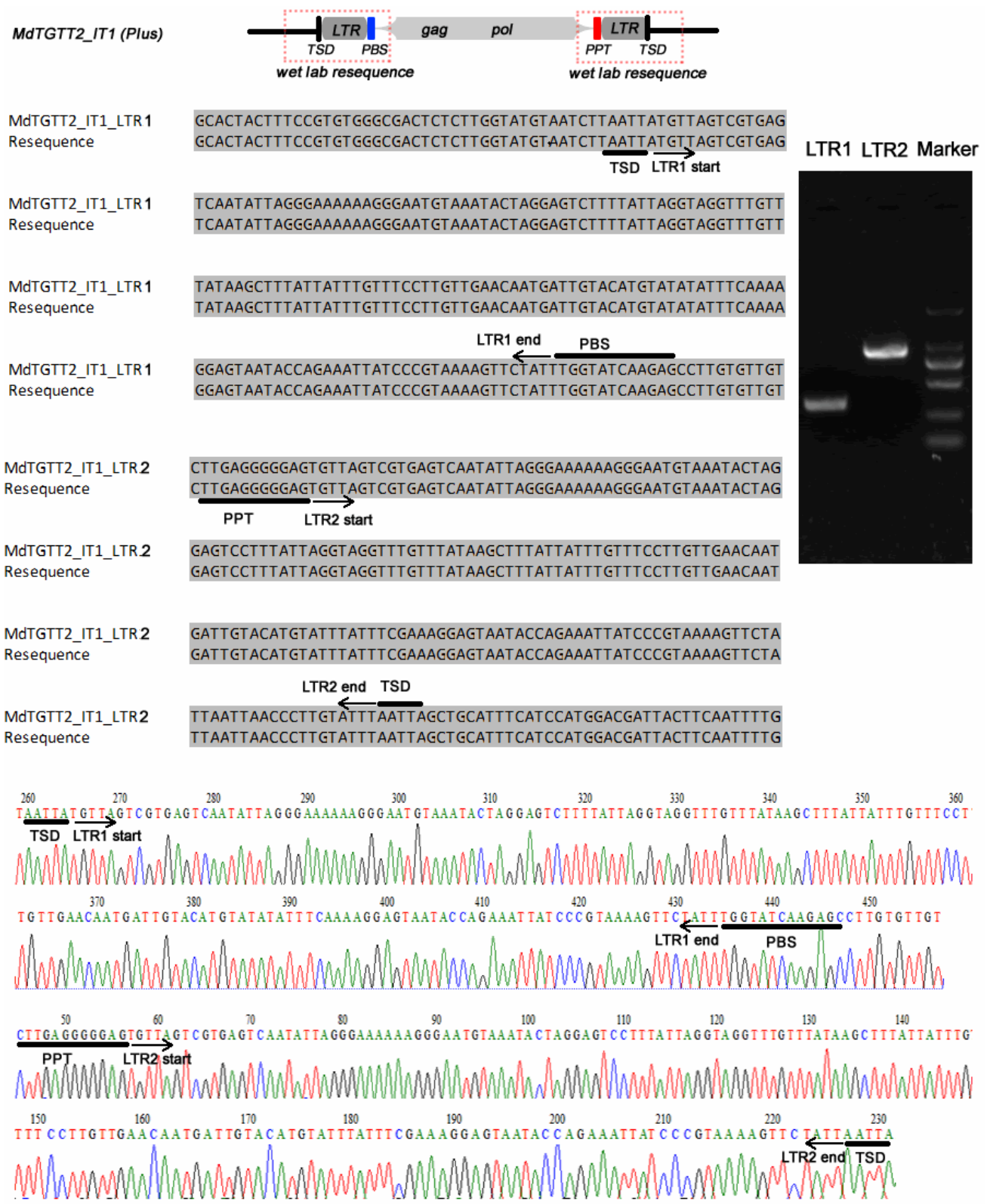
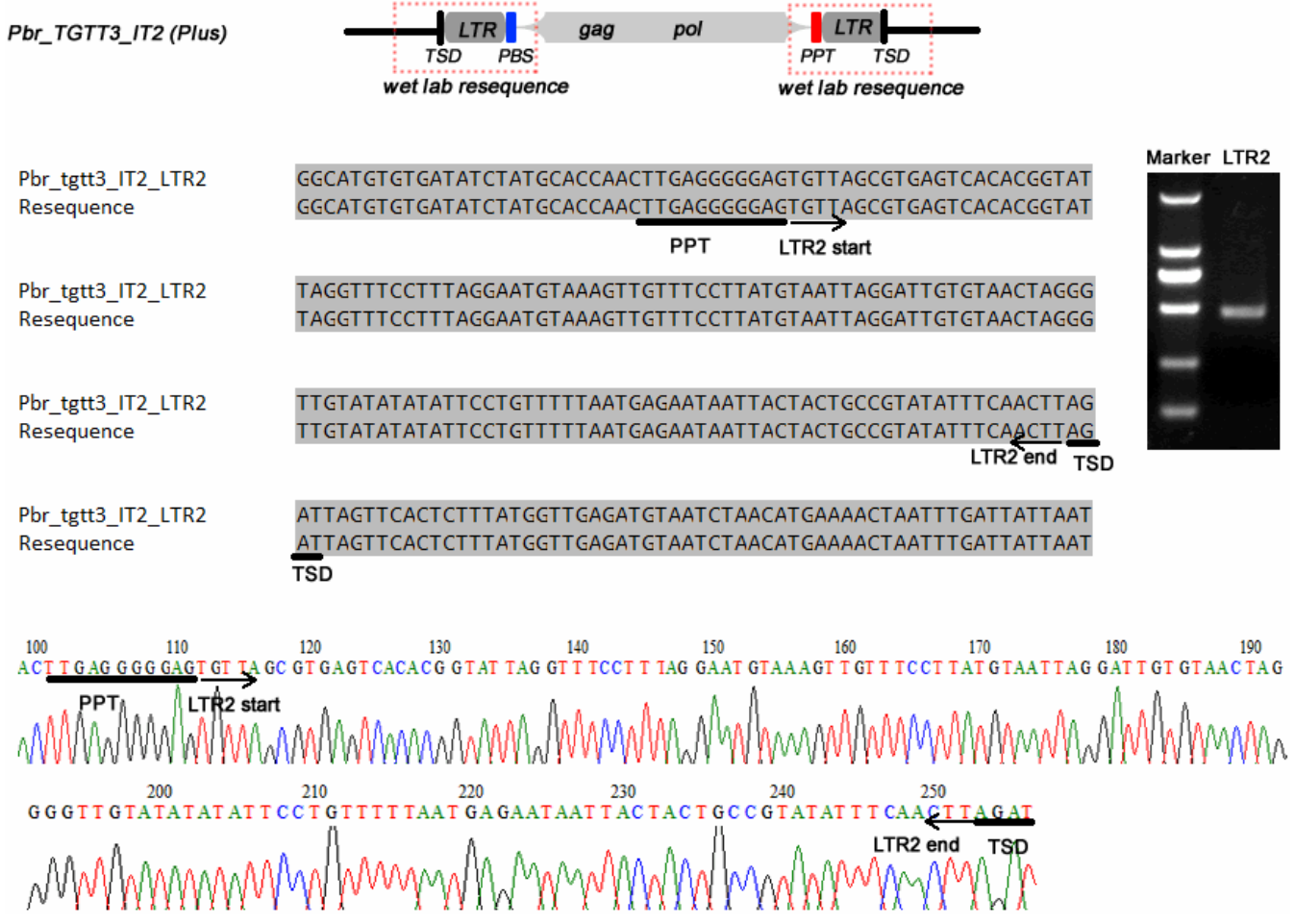
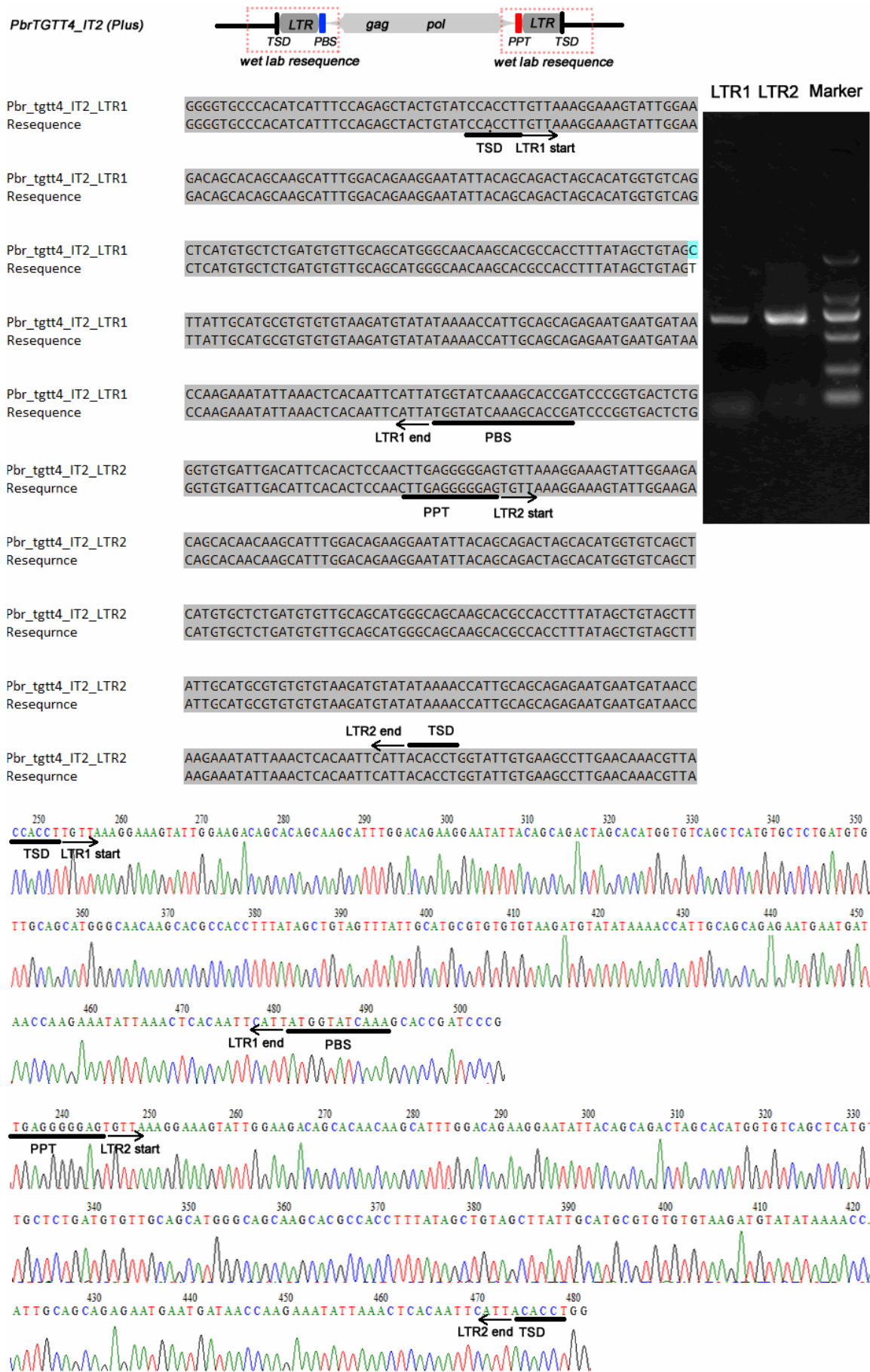


Figure S2.

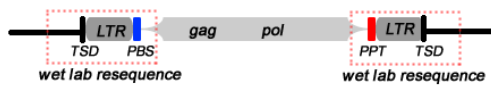


# Figure S2.



# Figure S2.

*PbrAACA1\_IT3 (Plus)*



Pbr_aaca1_IT3_LTR1 Resequence	CTTGTACAGACTGCTTGTAAAGAAAGTTAATATTAAGATGAAGATGCTATATCATAACT CTTGTACAGACTGCTTGTAAAGAAAGTTAATATTAAGATGAAGATGCTATATCATAACT
	TSD LTR1 start
Pbr_aaca1_IT3_LTR1 Resequence	ACAGTTGTTAGTTATTAGTTTGGTATAAGGTGCATTATCATGTAATTAGTTTATCTTATGT ACAGTTGTTAGTTATTAGTTTGGTATAAGGTGCATTATCATGTAATTAGTTTATCTTATGT
Pbr_aaca1_IT3_LTR1 Resequence	GGTAGCTTAGAATAGCTAAATGTAATAGTCTAAAGACTATATATATGTGATTGGATTAT GGTAGCTTAGAATAGCTAAATGTAATAGTCTAAAGACTATATATATGTGATTGGATTAT
Pbr_aaca1_IT3_LTR1 Resequence	TATTTTGAATAATGAGAATACACAGAAATCTTAATACTTAAGAAATCTTCTTTCTCGC TATTTTGAATAATGAGAATACACAGAAATCTTAATACTTAAGAAATCTTCTTTCTCGC
Pbr_aaca1_IT3_LTR1 Resequence	TCTTCTCTCTCTTCTTCTCTCTCTCTTCTTCTTTCGCAAGAACACAGAAGCTTCTACATGG TCTTCTCTCTCTTCTTCTCTCTCTCTTCTTCTTTCGCAAGAACACAGAAGCTTCTACATGG
	LTR1 end PBS
Pbr_aaca1_IT3_LTR1 Resequence	TATCCTTCGCCGCTTGCCTCACGGCCATTCGATCCATTCTCCGCTTGTCTCTGAT TATCCTTCGCCGCTTGCCTCACGGCCATTCGATCCATTCTCCGCTTGTCTCTGAT
	PBS
Pbr_aaca1_IT3_LTR2 Resequence	AATTCCTAATCTTCCAAGTTAGCTTGAGGGGTGTAAGATGAAGATGCTATATCATA AATTCCTAATCTTCCAAGTTAGCTTGAGGGGTGTAAGATGAAGATGCTATATCATA
	PPT LTR2 start
Pbr_aaca1_IT3_LTR2 Resequence	ACTACAGTTGTTAGTTATTAGTTTGGTATAAGGTGCATTATCATGTAATTAGTTTATCTTA ACTACAGTTGTTAGTTATTAGTTTGGTATAAGGTGCATTATCATGTAATTAGTTTATCTTA
Pbr_aaca1_IT3_LTR2 Resequence	TGTGGTAGCTTAGAATAGCTAAATGTAATAGTCTAAAGACTATATATATGTGATTGGA TGTGGTAGCTTAGAATAGCTAAATGTAATAGTCTAAAGACTATATATATGTGATTGGA
Pbr_aaca1_IT3_LTR2 Resequence	TTATATTTTGAATAATGAGAATACACAGAAATCTTAATACTTAAGAAATCTTCTTTCT TTATATTTTGAATAATGAGAATACACAGAAATCTTAATACTTAAGAAATCTTCTTTCT
	LTR2 end
Pbr_aaca1_IT3_LTR2 Resequence	TCGCTCTTCTCTCTTCTTCTCTCTCTCTTCTTCTTTCGCAAGAACACAGAAGCTTCTAC TCGCTCTTCTCTCTTCTTCTCTCTCTCTTCTTCTTTCGCAAGAACACAGAAGCTTCTAC
	LTR2 end TSD
Pbr_aaca1_IT3_LTR2 Resequence	AAATATAGTTTCTTCTTCTTCTTCTTCTTCTTCTTCTTTCGAAAGAAAGTTAATATACACCTTC AAATATAGTTTCTTCTTCTTCTTCTTCTTCTTCTTCTTTCGAAAGAAAGTTAATATACACCTTC

LTR1 LTR2 Marker

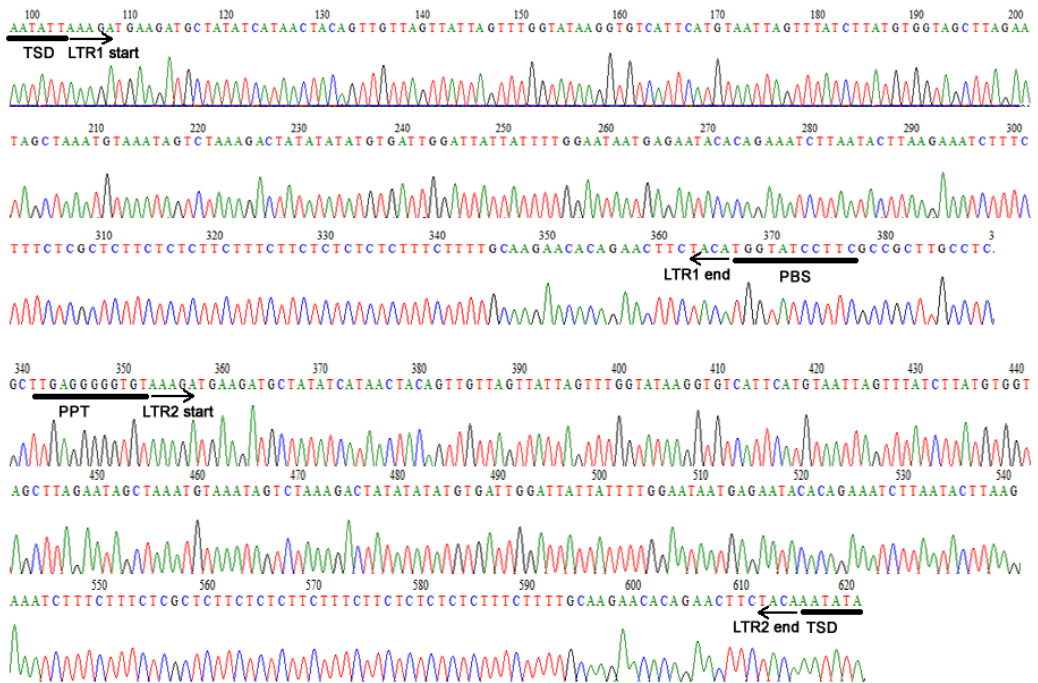
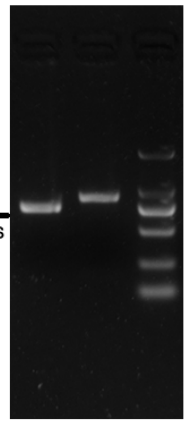


Figure S2.

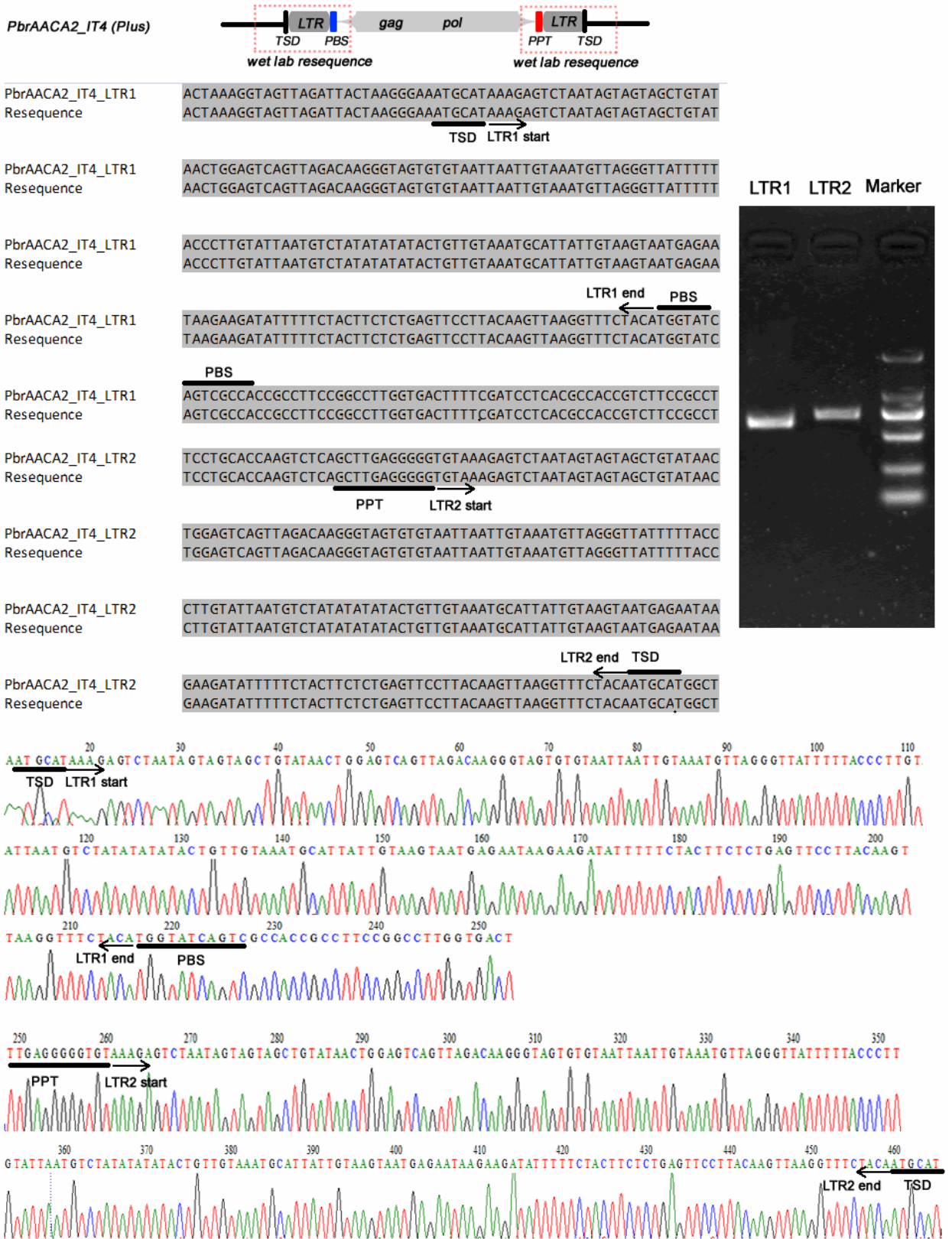
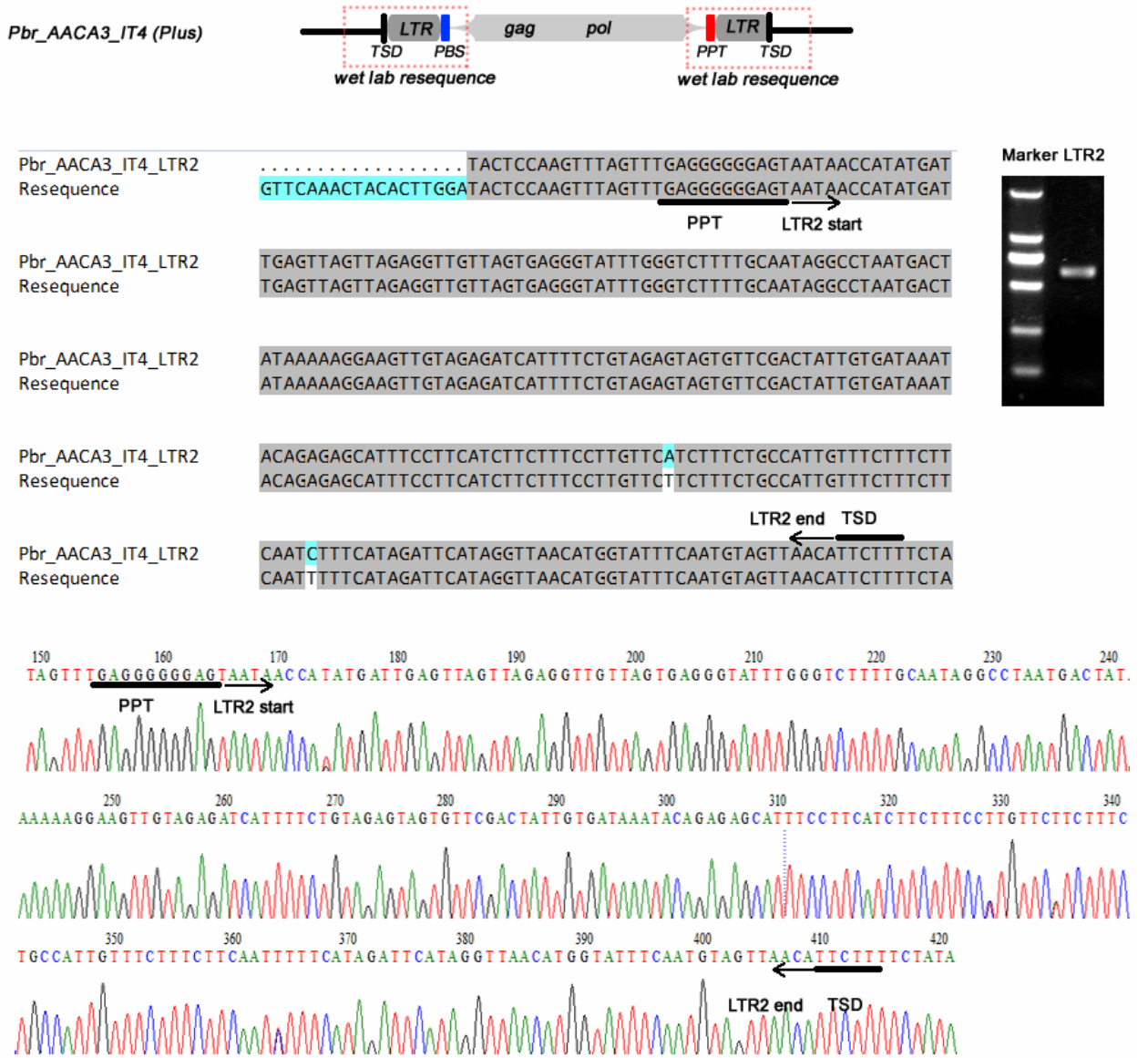




Figure S2.



# Figure S2.

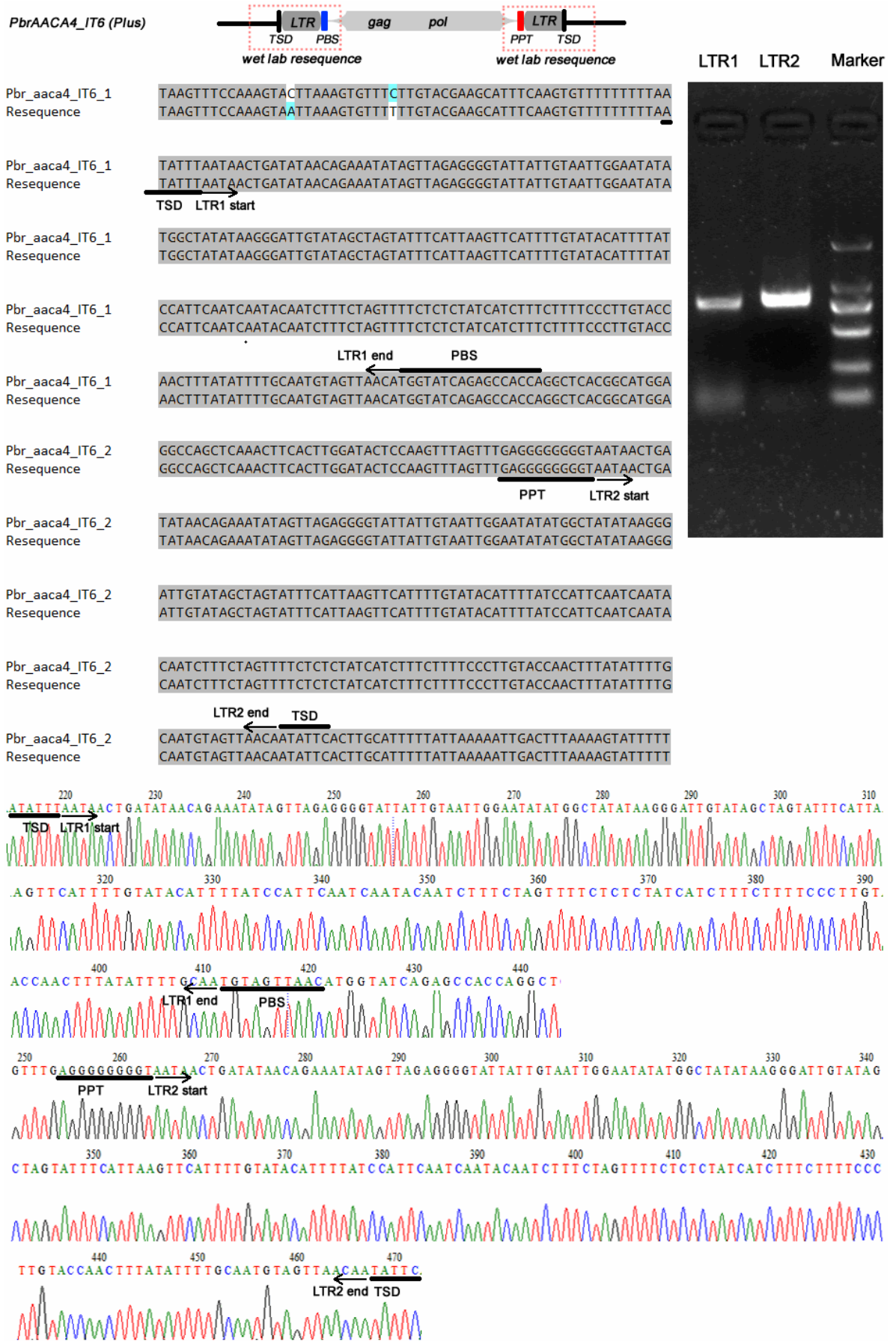
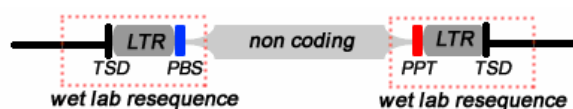


Figure S2.

MdAACA4\_IT2 (Plus)



Md\_AACA4\_IT2\_LTR1  
Resequencing

TCTATATATTTATGTATAACGAACCTTAATAACTGATATAACAGAAATATAGTTAGAGGGG  
TCTATATATTTATGTATAACGAACCTTAATAACTGATATAACAGAAATATAGTTAGAGGGG  
TSD LTR1 start

Md\_AACA4\_IT2\_LTR1  
Resequencing

TATTATTGTAATTAGGTTATATGGCTATATAAGGGATTGTATAGCTATCATTTCATTAAG  
TATTATTGTAATTAGGTTATATGGCTATATAAGGGATTGTATAGCTATCATTTCATTAAG

Md\_AACA4\_IT2\_LTR1  
Resequencing

TTCATTTTGTATACATTTTCTCTATTCAATCAATACAATCTTTCTTGTTTCTCTACCA  
TTCATTTTGTATACATTTTCTCTATTCAATCAATACAATCTTTCTTGTTTCTCTACCA

Md\_AACA4\_IT2\_LTR1  
Resequencing

ATTCTTTCTCTTCTCTGTACCAATTTTCAATGTAGTTAATATGGTATCAGA  
ATTCTTTCTCTTCTCTGTACCAATTTTCAATGTAGTTAATATGGTATCAGA  
LTR1 end PBS

Md\_AACA4\_IT2\_LTR1  
Resequencing

GCCACCAGGCTTACGCCATTGATTCTGGTGGTCCGATTTTTATTTTTTTTAGATTTCT  
GCCACCAGGCTTACGCCATTGATTCTGGTGGTCCGATTTTTTTTTTTTTTAGATTTCT

Marker LTR2

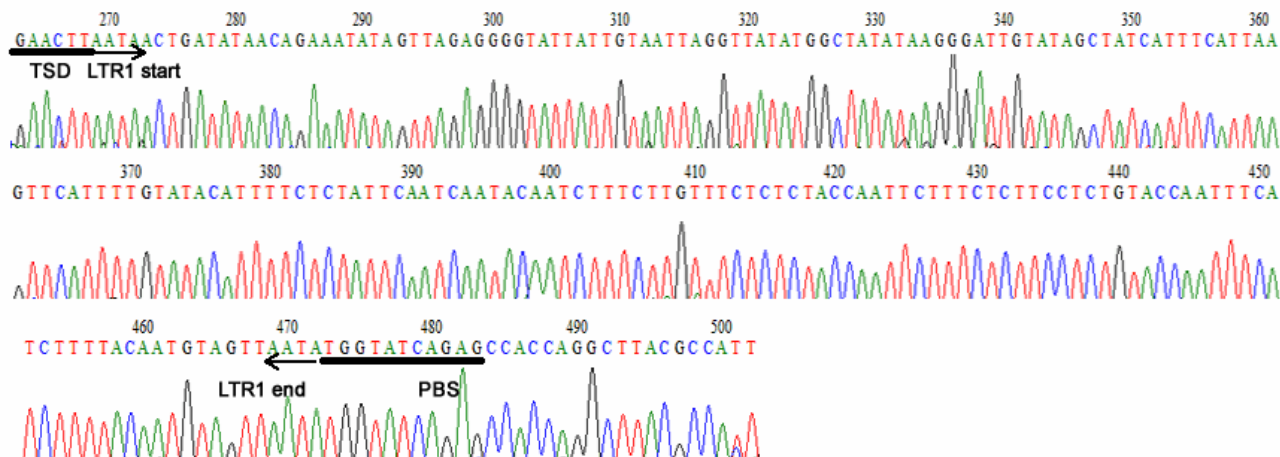
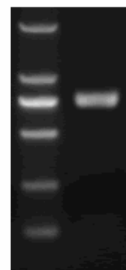


Figure S3.

## PBS Alignment

	10
<i>Pbr7_consensus_Ale/1-20</i>	TGGTATCACTCGCCATTGTT -
<i>Pbr_aaca1_consensus_Ale/1-21</i>	TGGTATCCTTCGCCGCTTGCC
<i>Pm_aaca1_consensus_Ale/1-21</i>	TGGTATCATTTCGCTTTTGCC
<i>Pbr5_consensus_Ale/1-20</i>	TGGTATCAATCGACGGATAT -
<i>Pbr1_consensus_Ale/1-20</i>	TGGTATCAGAGCAGGTTCCA -
<i>Pbr_tggt4_consensus_Ale/1-20</i>	TGGTATCAAAGCACCGATCC -
<i>Pbr_aaca4_IT7/1-20</i>	TAGTATTAGAACCACCAGGC -
<i>Md_aaca4_IT4/1-20</i>	TGGTATCAGAGCAAAGGCTC -
<i>Pbr_aaca4_IT11/1-20</i>	TAGTATCAGAGCCACCAGGC -
<i>Pbr_aaca4_IT1/1-20</i>	TGGTATCAGAGCCACCAGGC -
<i>Pbr_aaca4_IT2/1-20</i>	TGGTATCAGAGCCACCAGGC -
<i>Pbr_aaca4_IT6/1-20</i>	TGGTATCAGAGCCACCAGGC -
<i>Pbr_aaca4_IT9/1-20</i>	TGGTATCAGAGCCACCAGGC -
<i>Pbr_aaca4_IT13/1-20</i>	TGGTATCAGAGCCACCAGGC -
<i>Md_aaca4_IT1/1-20</i>	TGGTATCAGAGCCACCAGGC -
<i>Md_aaca4_IT2/1-20</i>	TGGTATCAGAGCCACCAGGC -
<i>Md_aaca4_IT3/1-20</i>	TGGTATCAGAGCCACCAGGC -
<i>Pbr_aaca3_IT3/1-20</i>	TGGTATCAAAGCCACCAGAC -
<i>Pbr_aaca4_IT12/1-20</i>	TGGTATCAGAGTCACCAGGC -
<i>Pbr_aaca4_IT16/1-20</i>	TGGTATCAGAGCCATCAAGC -
<i>Pbr_aaca3_IT4/1-20</i>	TGGTATTAGAGCCACCAGGC -
<i>Md_aaca4_IT5/1-21</i>	TGGTATTAGAGCCACCAAGGC
<i>Pbr_aaca4_IT14/1-21</i>	TGGTATCAAAGCCACCAAGGC
<i>Pbr_aaca4_IT15/1-21</i>	TGGTATCAAAGCCACCAAGGC
<i>Pbr_aaca4_IT3/1-21</i>	TGGTATCAGAGCCACCAAGGC
<i>Pbr_aaca4_IT4/1-21</i>	TGGTATCAGAGCCACCAAGGC
<i>Pbr_aaca4_IT5/1-21</i>	TGGTATCAGAGCCACCAAGGC
<i>Pbr_aaca4_IT8/1-21</i>	TGGTATCAGAGCCACCAAGGC
<i>Pbr_aaca4_IT10/1-21</i>	TGGTATCAGAGCCACCAAGGC
<i>Md_aaca4_IT6/1-21</i>	TGGTATCAGAGCCACCAAGGC
<i>Pbr_aaca3_IT1/1-20</i>	TGGTATCAGAGCCACCAAGC -
<i>Pbr_aaca3_IT2/1-20</i>	TGGTATCAGAGCCACCAAGC -
<i>Pm_tggt1_consensus_Ale/1-20</i>	TGGCATCAAACTTAGGTTG -
<i>Pp_tggt1_consensus_Ale/1-20</i>	TGGCATCAGAGCTTAGGTTG -
<i>Pbr_tggt1_consensus_Ale/1-20</i>	TGGCATCAGAGCCTAGGTTA -
<i>Md_tggt1_consensus_Ale/1-20</i>	TGGCATCAGAGCCAAGGTTG -
<i>Pbr2_consensus_Ale/1-20</i>	TGGCATCAGAGCACCGATCC -
<i>Pbr_aaca2_consensus_Ale/1-20</i>	TGGTATCAATCGCCACCGCC -
<i>Pbr_tggt3_consensus_Ale/1-21</i>	TGGTATCAAACCCCTACTACC
<i>Pbr_tggt2_consensus_Ale/1-20</i>	TGGTATCAAGAGCGCCGAAA -
<i>Md_tggt2_consensus_Ale/1-20</i>	TGGTATCAAGAGCCTTGAT -

Consensus



TGGTATCAGAGCCACCAGGCC

Figure S4.

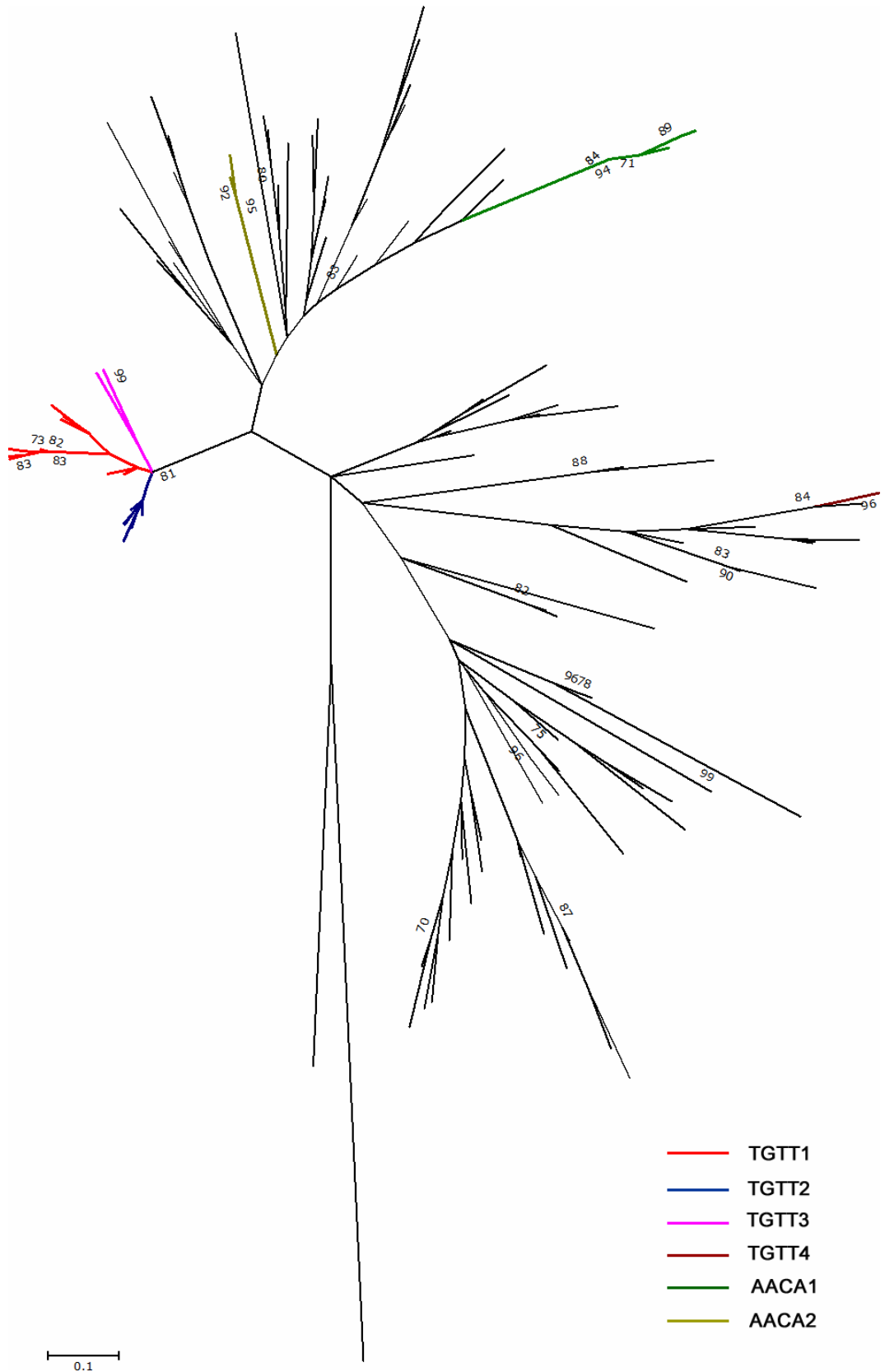
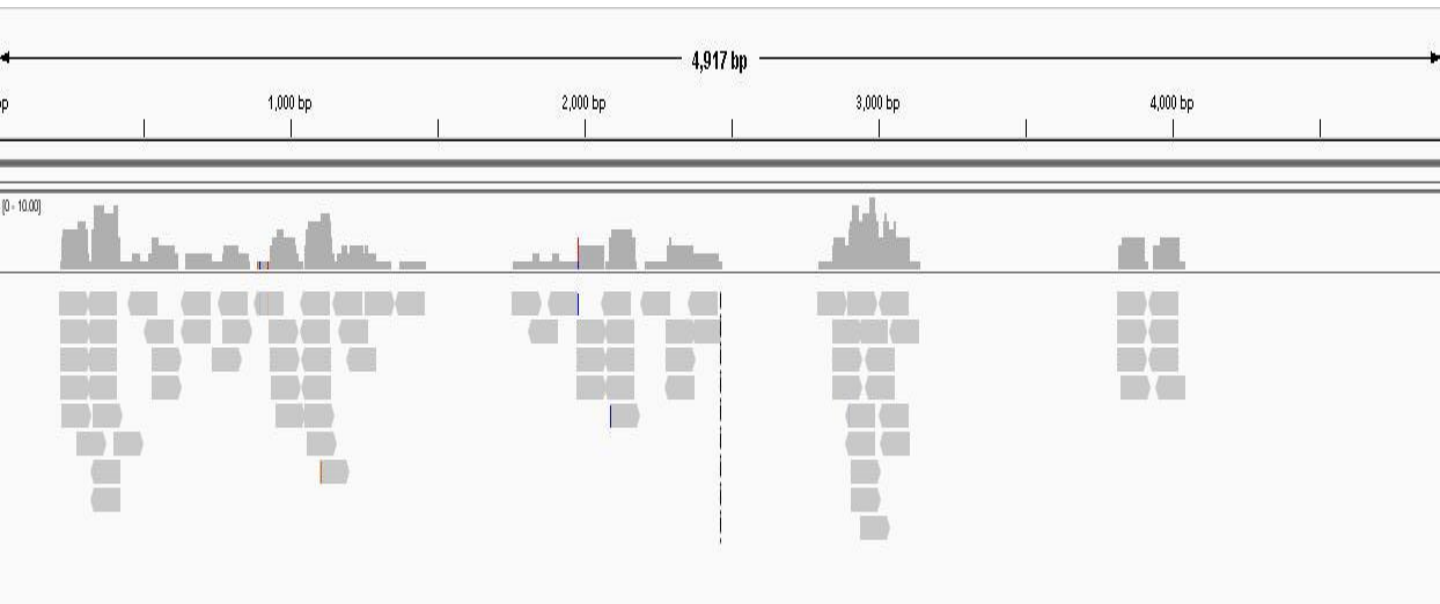
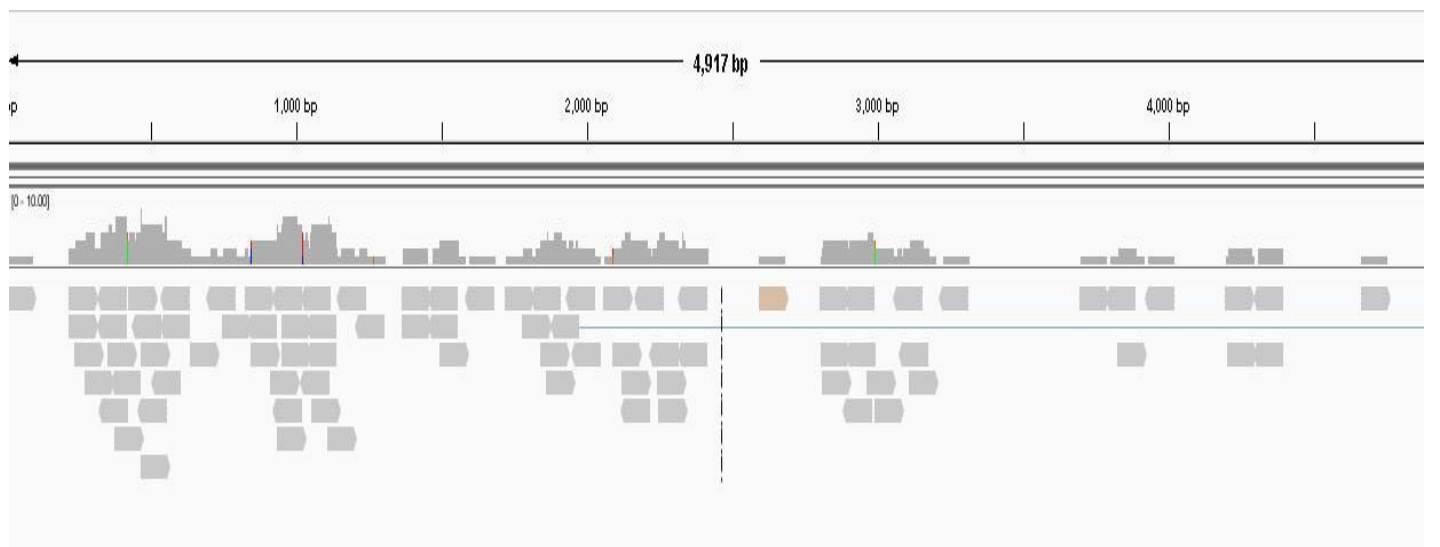


Figure S5.

*PbrAACA1\_IT3*



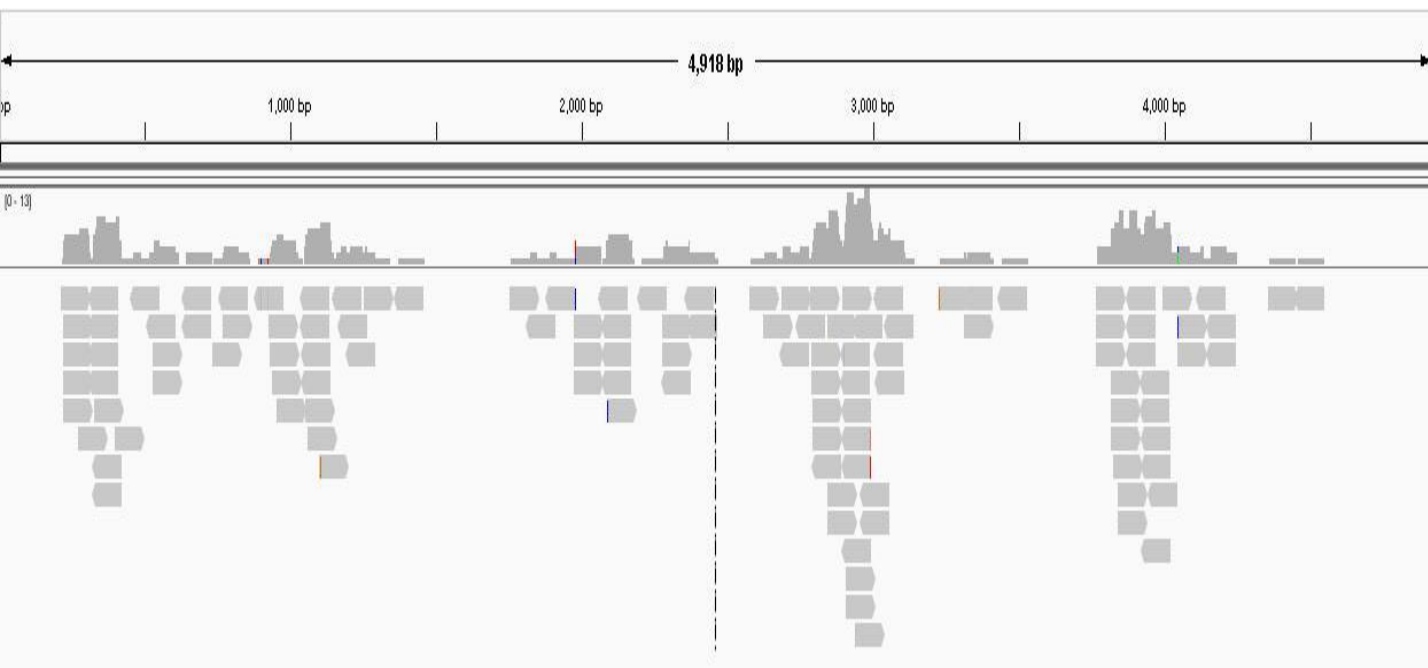
NCBI SRA database: SRX147917



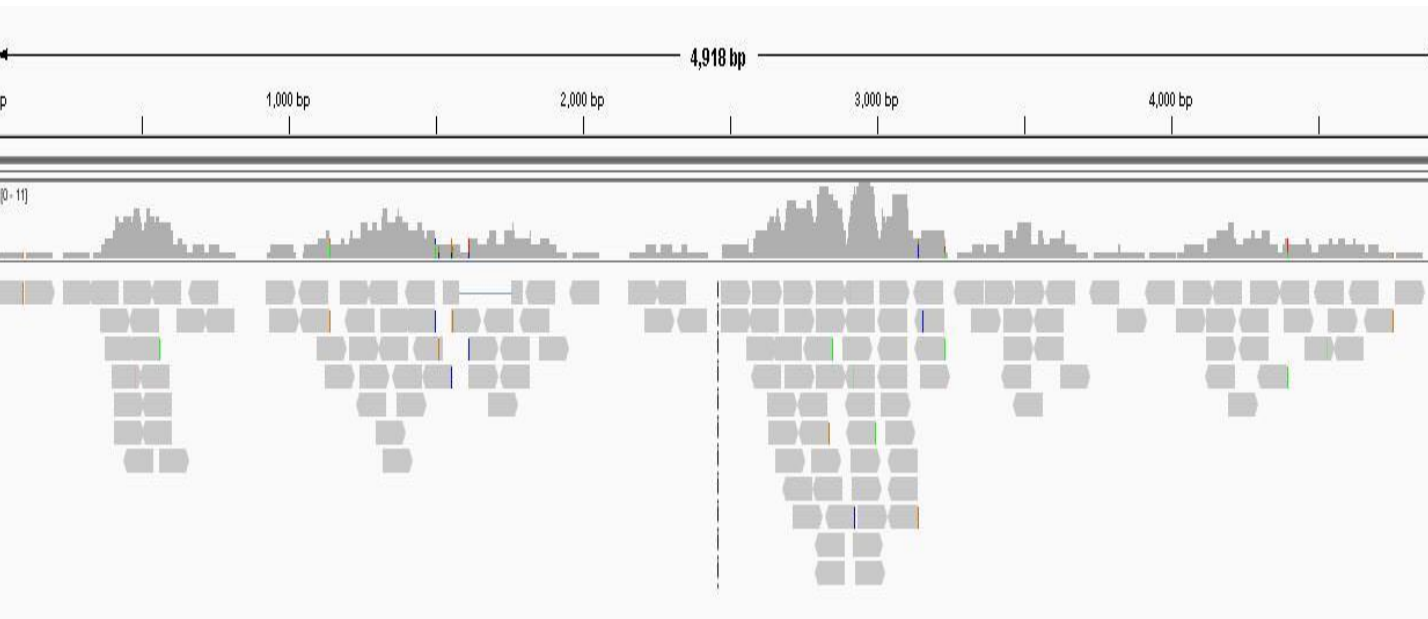
NCBI SRA database: SRX298075

Figure S5.

*PbrAACA1\_IT5*



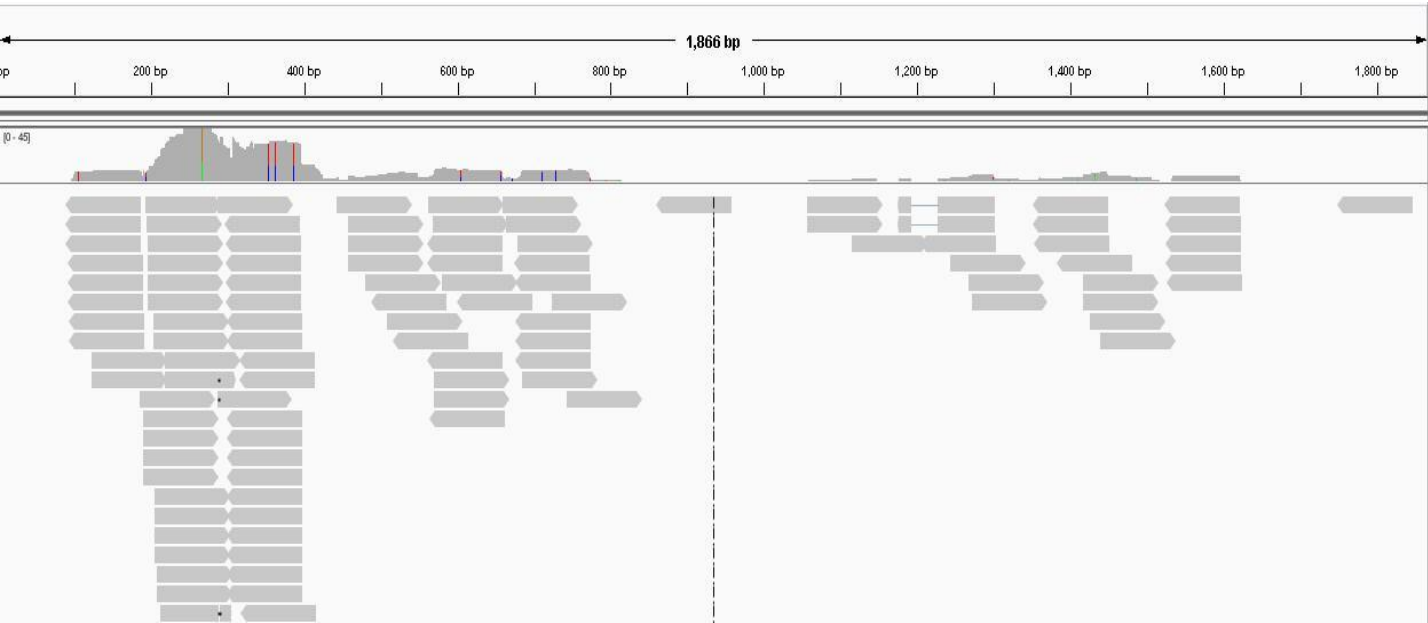
NCBI SRA database: SRX147917



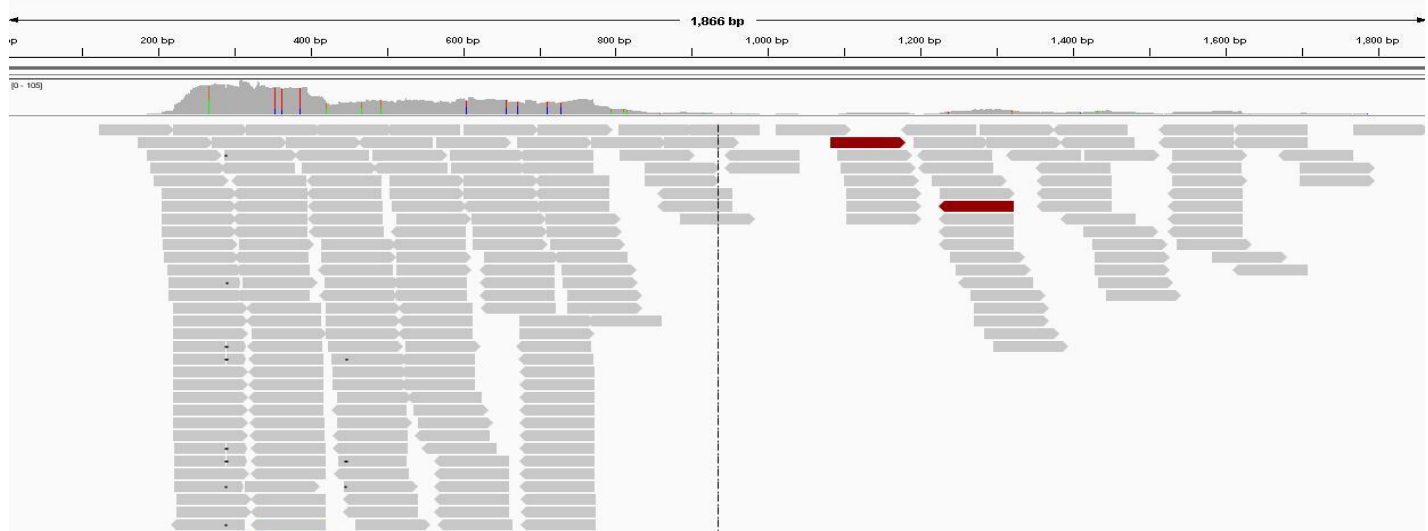
NCBI SRA database: SRX298075

Figure S5.

*PbrAACA3\_IT4*



NCBI SRA database: SRX147917

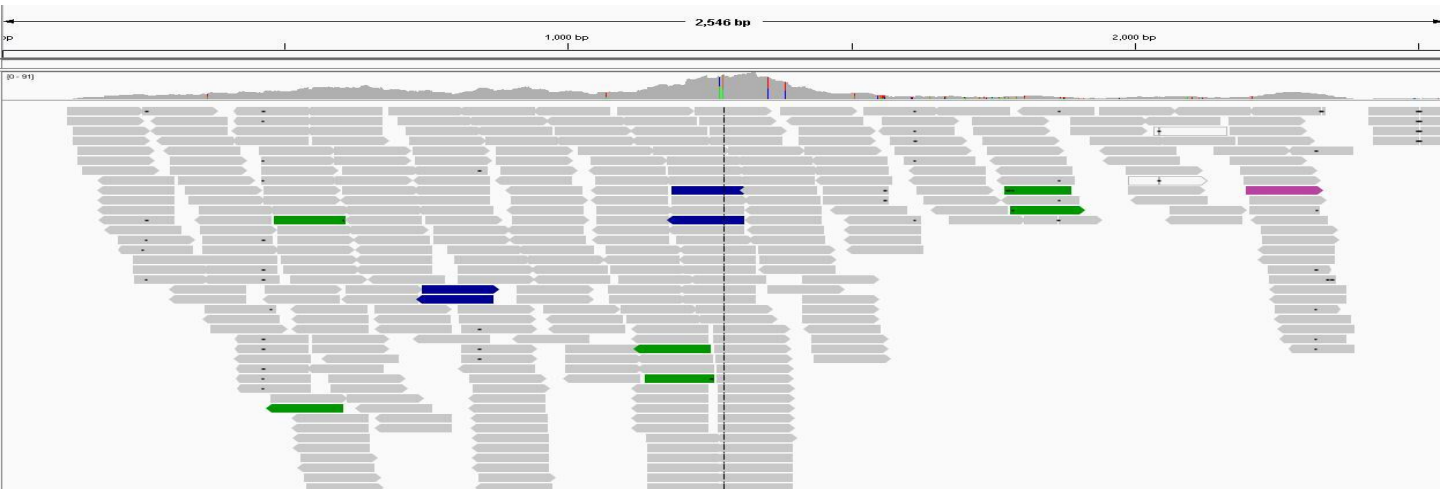


NCBI SRA database: : SRX298075

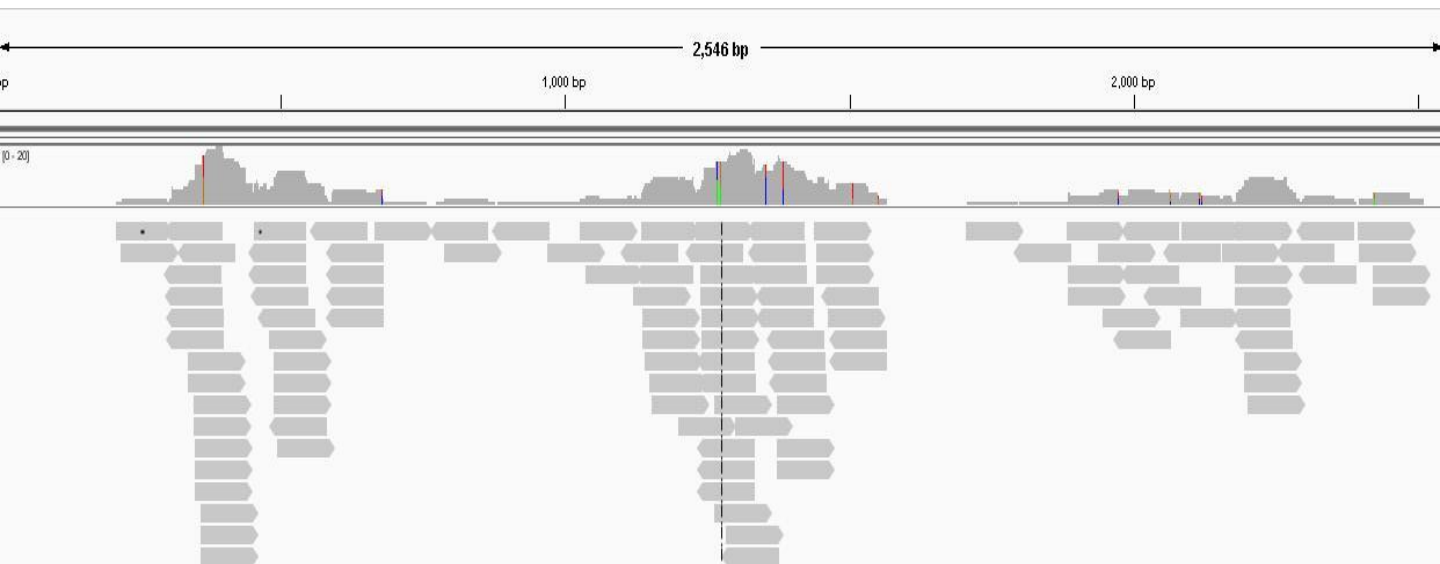


Figure S5.

*PbrAACA4\_IT11*



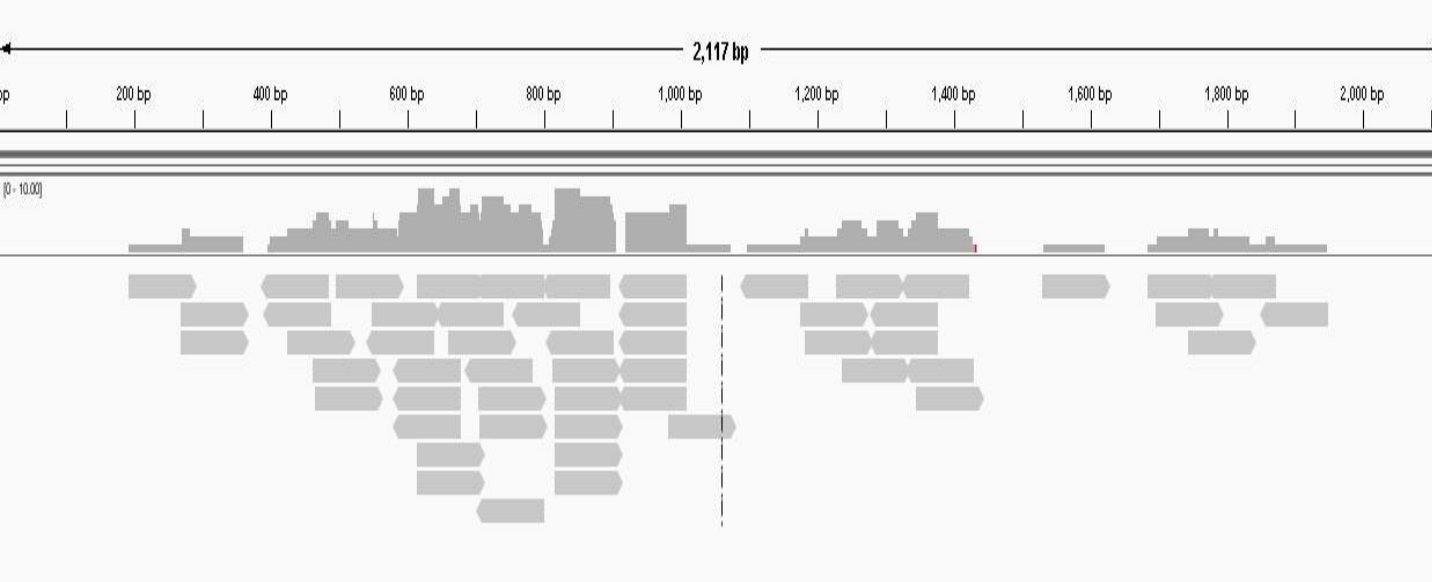
NCBI SRA database: SRX147917



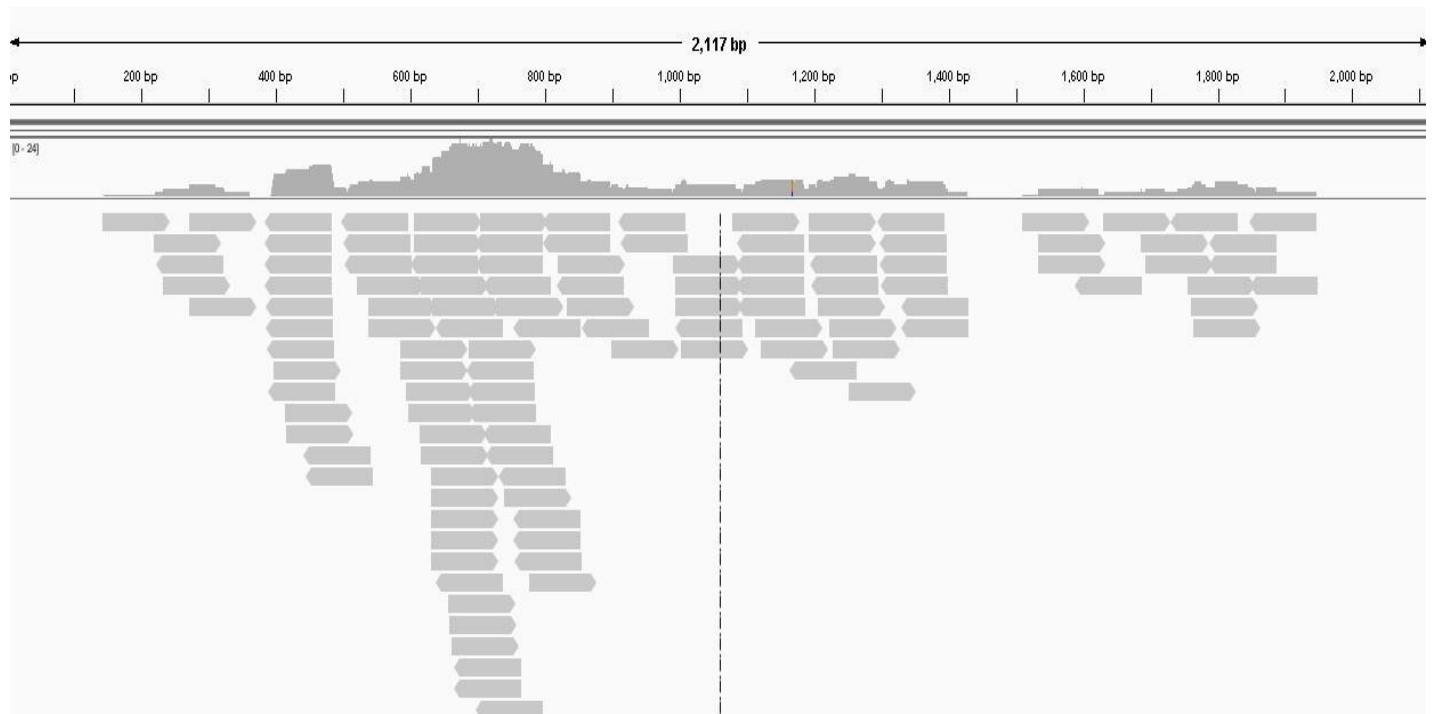
NCBI SRA database: SRX298075

Figure S5.

*PbrAACA4\_IT14*



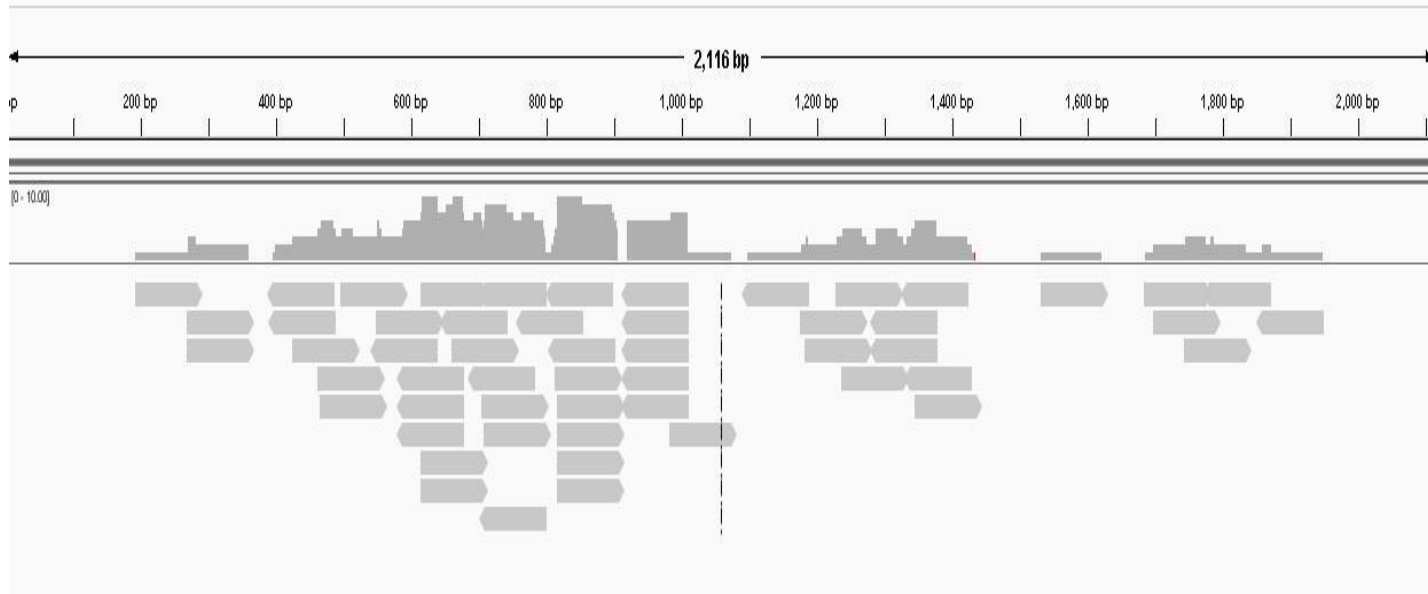
NCBI SRA database: SRX147917



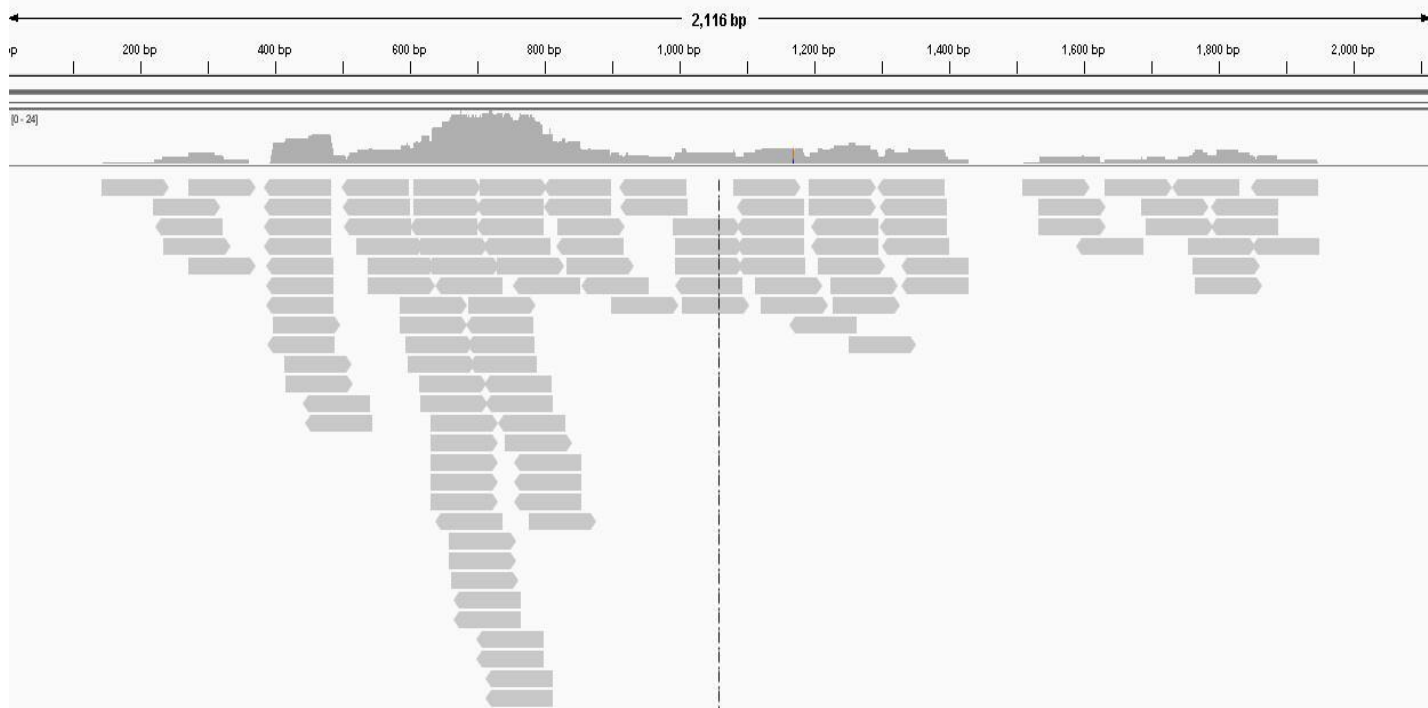
NCBI SRA database: SRX298075

Figure S5.

*PbrAACA4\_IT15*



NCBI SRA database: SRX147917



NCBI SRA database: SRX298075