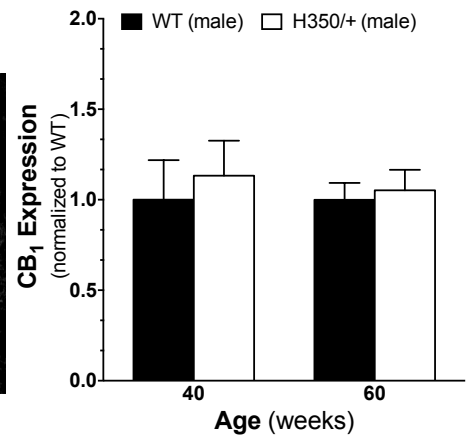
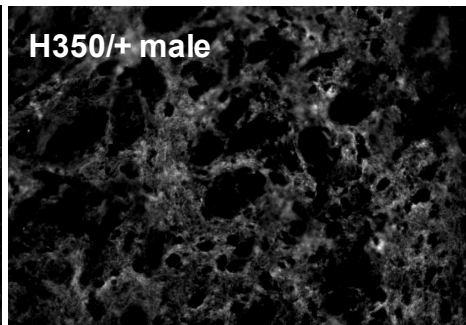
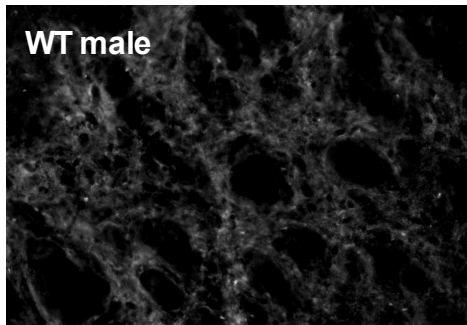
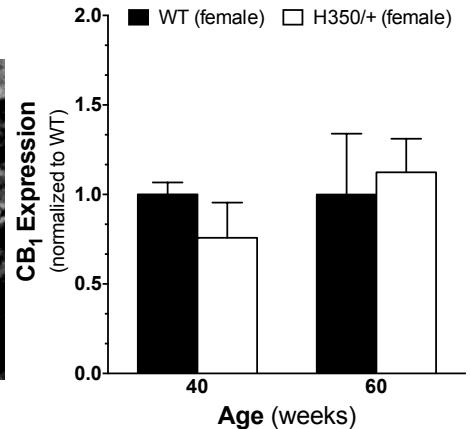
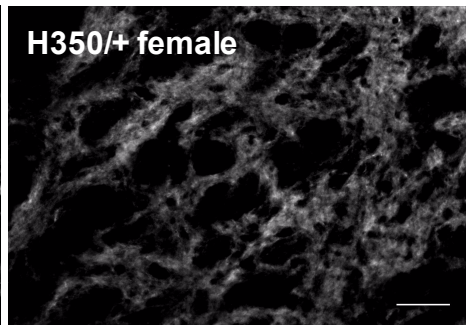
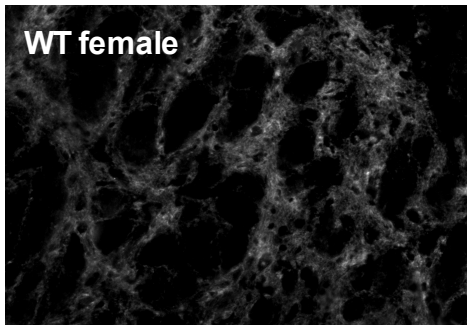


A



B



Supplementary Figure 8. Representative images of CB₁ immunoreactivity at 60 weeks of age. CB₁ was co-stained with enkephalin to assess for changes on the axon terminals of MSNs projecting into the globus pallidus. HdhQ350/+ (A) males and (B) females showed similar levels of CB₁ immunoreactivity compared to respective wild-type littermates. Scale bar denotes 50um. N=3 for all groups. Error bars represent S.E.M., with two-way ANOVA with Bonferroni post-hoc test.