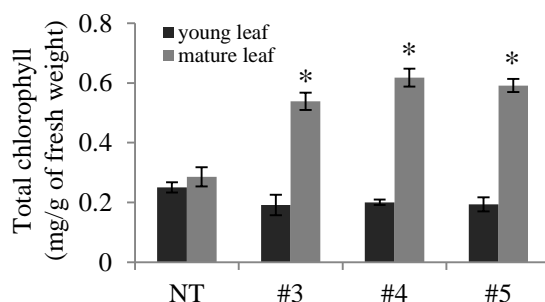
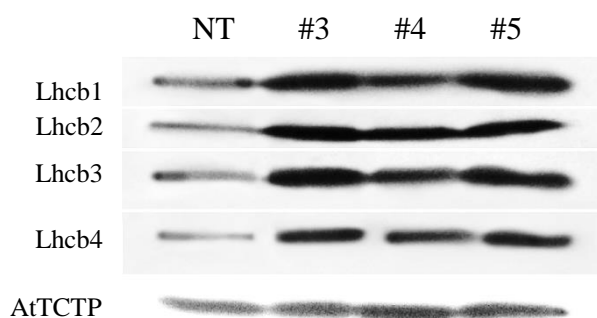


**A****B**

**S2 Fig. Measurement of chlorophyll contents in creeping bentgrass plants.** (A) Chlorophyll contents in young and mature leaves of non-transformed (NT) and transgenic AtBAT1 plants (#3, #4, and #5). Two-week-old leaves were harvested and used as young leaves, and leaves from 4-week-grown plants were used as mature leaves. Data represent means  $\pm$  SD of three independent measurements. Statistically significant changes compared with NT are indicated by \* at  $P < 0.05$ . (B) Western blot analysis of light-harvesting chlorophyll-binding (Lhcb) proteins. Mature leaves were used for this analysis. AtTCTP (*A. thaliana* translationally controlled tumor protein; At3g16640) was shown as loading controls.