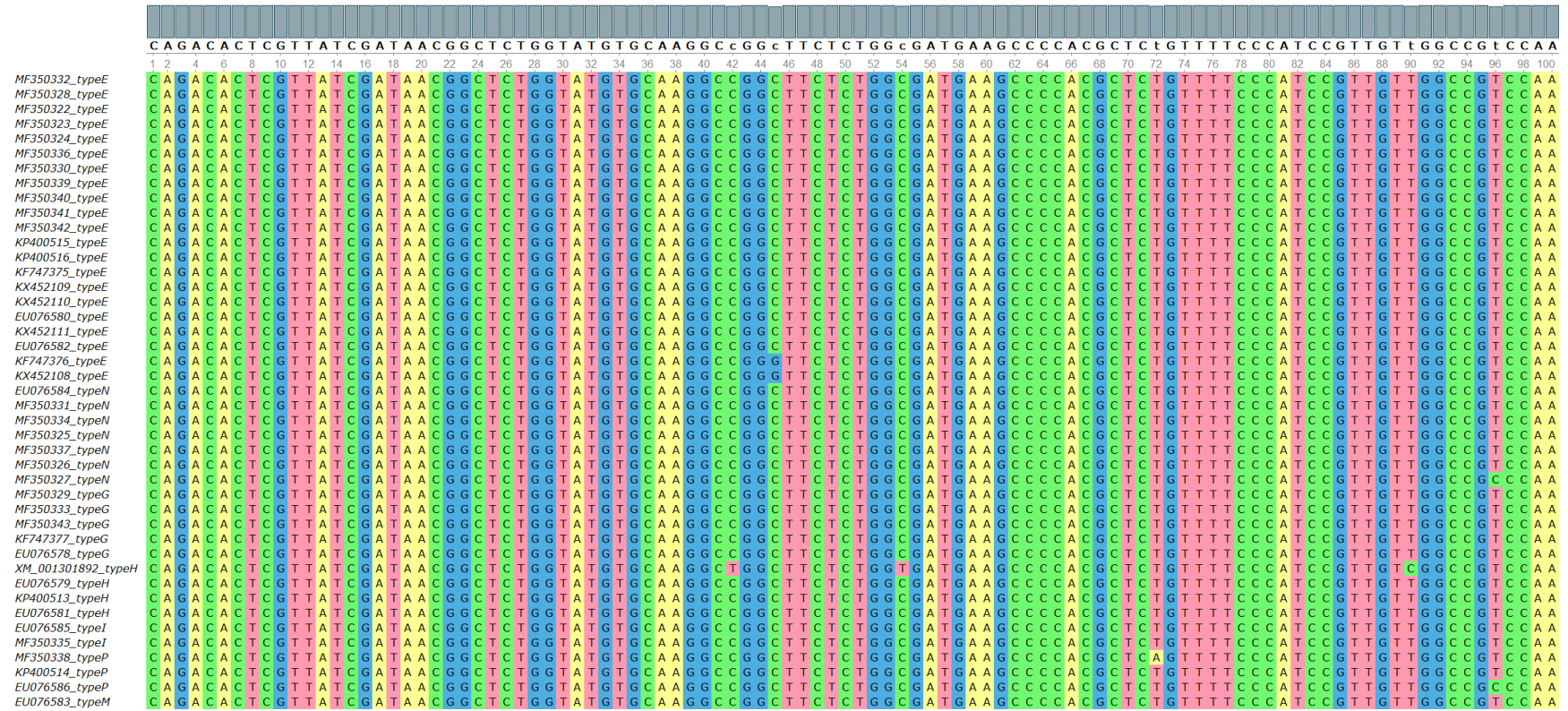


**Additional file 2: Alignment of the *T. vaginalis* actin gene nucleotide sequences retrieved from GenBank and those of from our clinical *T. vaginalis* isolates**





**A C A C G G T A T L G T C A A C A A C T G G G A T G A T A T G G A A A A G A T C T G G C A C C A C A C A T T c T A C A A C G A A C T T C G T G T T G A C C C A A C A G A G C A C C C A G T T C T T C T T**

201 204 206 208 210 212 214 216 218 220 222 224 226 228 230 232 234 236 238 240 242 244 246 248 250 252 254 256 258 260 262 264 266 268 270 272 274 276 278 280 282 284 286 288 290 292 294 296 298 300

MF350332\_typeE  
MF350328\_typeE  
MF350322\_typeE  
MF350323\_typeE  
MF350324\_typeE  
MF350336\_typeE  
MF350330\_typeE  
MF350339\_typeE  
MF350340\_typeE  
MF350341\_typeE  
MF350342\_typeE  
KP400515\_typeE  
KP400516\_typeE  
KF747375\_typeE  
KX452109\_typeE  
KX452110\_typeE  
EU076580\_typeE  
KX452111\_typeE  
EU076582\_typeE  
KF747376\_typeE  
KX452108\_typeE  
EU076584\_typeN  
MF350331\_typeN  
MF350334\_typeN  
MF350325\_typeN  
MF350337\_typeN  
MF350326\_typeN  
MF350327\_typeN  
MF350329\_typeE  
MF350333\_typeG  
MF350343\_typeG  
KF747377\_typeG  
EU076578\_typeG  
XM\_001301892\_typeH  
EU076579\_typeH  
KP400513\_typeH  
EU076581\_typeH  
EU076585\_typeI  
MF350335\_typeI  
MF350338\_typeP  
KP400514\_typeP  
EU076586\_typeP  
EU076583\_typeM





ACACGCCATCATGAGACTTAACCTCGCTGGCCGTGATCTcACAGCCTGGATGGTCAAGCTTCTCACAGAGCGTGgCAATGCTTTCAACACAACAGCCGAA

501 504 506 508 510 512 514 516 518 520 522 524 526 528 530 532 534 536 538 540 542 544 546 548 550 552 554 556 558 560 562 564 566 568 570 572 574 576 578 580 582 584 586 588 590 592 594 596 598 600

MF350332\_typeE  
MF350328\_typeE  
MF350322\_typeE  
MF350323\_typeE  
MF350324\_typeE  
MF350336\_typeE  
MF350330\_typeE  
MF350339\_typeE  
MF350340\_typeE  
MF350341\_typeE  
MF350342\_typeE  
KP400515\_typeE  
KP400516\_typeE  
KF747375\_typeE  
KX452109\_typeE  
KX452110\_typeE  
EU076580\_typeE  
KX452111\_typeE  
EU076582\_typeE  
KF747376\_typeE  
KX452108\_typeE  
EU076584\_typeN  
MF350331\_typeN  
MF350334\_typeN  
MF350325\_typeN  
MF350337\_typeN  
MF350326\_typeN  
MF350327\_typeN  
MF350329\_typeG  
MF350333\_typeG  
MF350343\_typeG  
KF747377\_typeG  
EU076578\_typeG  
XM\_001301892\_typeH  
EU076579\_typeH  
KP400513\_typeH  
EU076581\_typeH  
EU076585\_typeI  
MF350335\_typeI  
MF350338\_typeP  
KP400514\_typeP  
EU076586\_typeP  
EU076583\_typeM

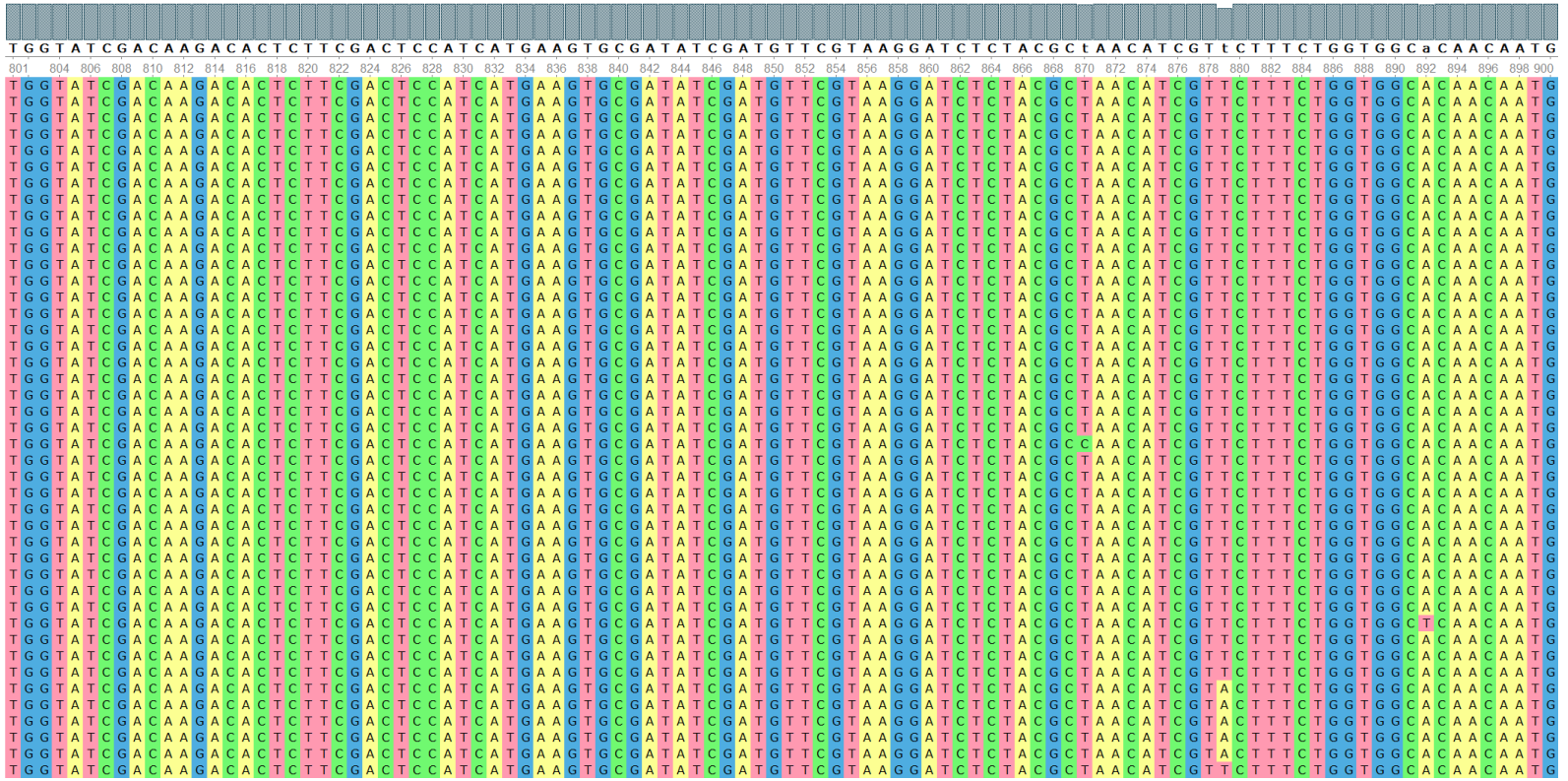


AcTACACACTTCCAGATGGCAACGTCATCACAATCGGCAATGAGCGCTTCCGCTGCCAGAAATGCTCTTCAAGCCATACTTCGATGGTATGGAATACGA

701 704 706 708 710 712 714 716 718 720 722 724 726 728 730 732 734 736 738 740 742 744 746 748 750 752 754 756 758 760 762 764 766 768 770 772 774 776 778 780 782 784 786 788 790 792 794 796 798 800

MF350332\_typeE  
MF350328\_typeE  
MF350322\_typeE  
MF350323\_typeE  
MF350324\_typeE  
MF350336\_typeE  
MF350330\_typeE  
MF350339\_typeE  
MF350340\_typeE  
MF350341\_typeE  
MF350342\_typeE  
KP400515\_typeE  
KP400516\_typeE  
KF747375\_typeE  
KX452109\_typeE  
KX452110\_typeE  
EU076580\_typeE  
KX452111\_typeE  
EU076582\_typeE  
KF747376\_typeE  
KX452108\_typeE  
EU076584\_typeN  
MF350331\_typeN  
MF350334\_typeN  
MF350325\_typeN  
MF350337\_typeN  
MF350326\_typeN  
MF350327\_typeN  
MF350329\_typeG  
MF350333\_typeG  
MF350343\_typeG  
KF747377\_typeG  
EU076578\_typeG  
XM\_001301892\_typeH  
EU076579\_typeH  
KP400513\_typeH  
EU076581\_typeH  
EU076585\_typeI  
MF350335\_typeI  
MF350338\_typeP  
KP400514\_typeP  
EU076586\_typeP  
EU076583\_typeM









Sequences accession numbers with the prefix MF are from our study, the other *T. vaginalis actin* sequences were retrieved from GenBank, and the suffix letter indicates the assigned *actin* genotype.