

5/11/2016

SUPPLEMENTARY MATERIAL

Evidence for the Role of BAG3 in Mitochondrial Quality Control in Cardiomyocytes

Running Title:

Farzaneh G. Tahir¹, Tijana Knezevic¹, Manish K. Gupta¹, Jennifer Gordon¹,

Joseph Y. Cheung^{2,3}, Arthur M. Feldman^{3,4}, Kamel Khalili*

1. Department of Neuroscience
Center for Neurovirology
Lewis Katz School of Medicine at Temple University
Philadelphia, Pennsylvania

2. Center for Translational Medicine
Lewis Katz School of Medicine at Temple University
Philadelphia, Pennsylvania

3. Department of Medicine
Lewis Katz School of Medicine at Temple University
Philadelphia, Pennsylvania

4. Cardiovascular Research Center
Lewis Katz School of Medicine at Temple University
Philadelphia, Pennsylvania

Keywords:

- BAG3
- Parkin
- Tom20
- mitophagy
- proteasome

Contract grant sponsor: P30MH092177 (Khalili)

Contract grant sponsor: R01HL123093 (Khalili, Cheung, Feldman)

*Corresponding author

Address: Department of Neuroscience, Lewis Katz School of Medicine at Temple University, 3500 N. Broad Street, Philadelphia, PA 19140 USA
Telephone: 215.707.4500; Fax: 215.707.4888
Email: kamel.khalili@temple.edu

FIGURE LEGENDS

Figure S1. Protein level normalized to Actin level after proteasome inhibition. NRVCs were treated with MG132 (5 μ M, 12hr) in the presence or absence of CCCP (20 μ M, 12 hr). Protein levels of **(A)** BAG3, **(B)** Parkin, **(C)** VCP, **(D)** Beclin 1, **(E)** HSP70, **(F)** P62 and **(G)** LC3 II are normalized to Actin levels.

Figure S2. BAG3 increases exogenous Parkin expression. H9c2 cells were transfected with fluorescent Parkin plasmid with or without BAG3 siRNA and fluorescent signals were detected using flow cytometry in **(A)** Parkin overexpression **(B)** Parkin overexpression and CCCP treatment, **(C)** Parkin overexpression and BAG3 knockdown, and **(D)** Parkin overexpression, BAG3 knockdown and CCCP treatment conditions.

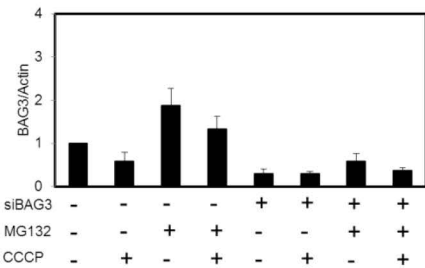
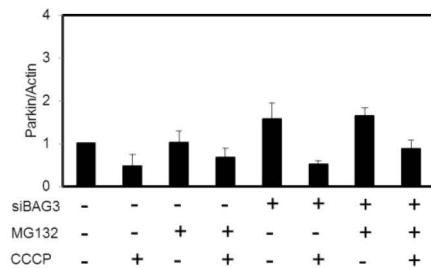
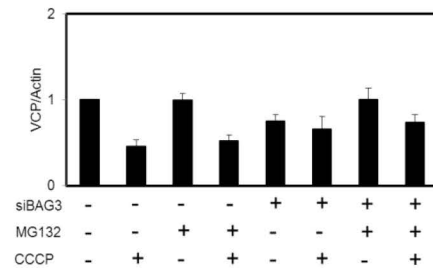
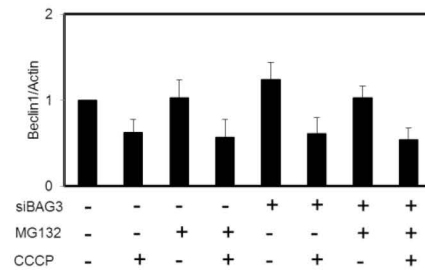
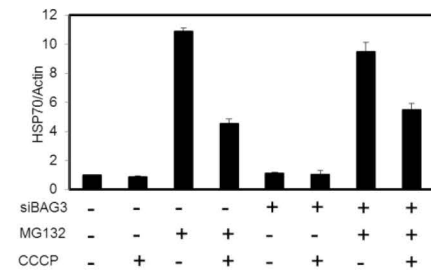
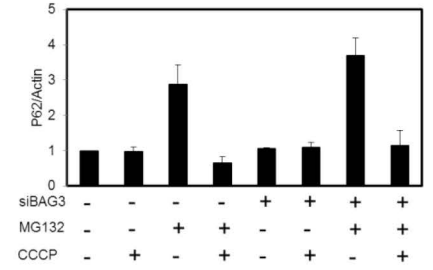
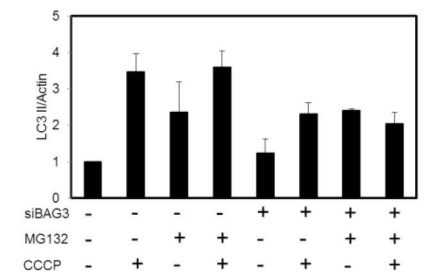
Figure S1**A****B****C****D****E****F****G**

Figure S2

