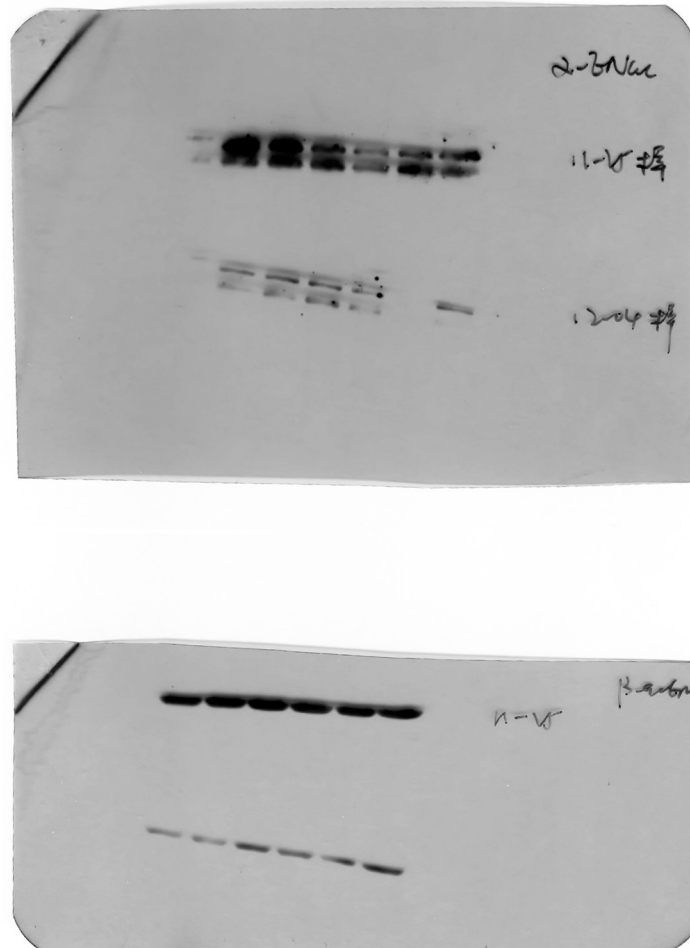
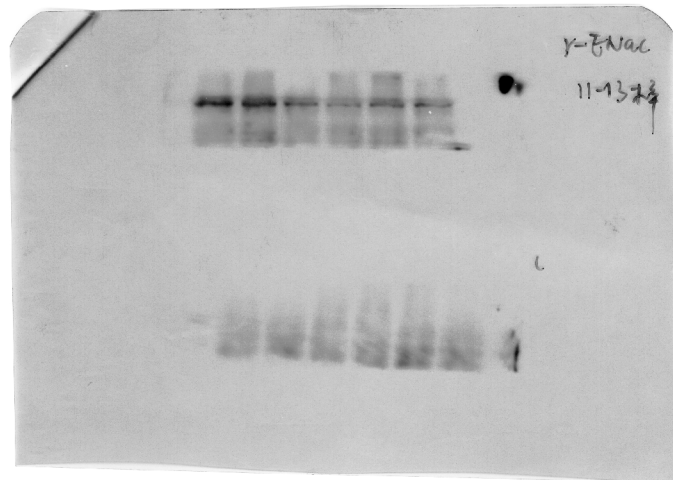


Novel mechanisms for crotonaldehyde-induced lung edema

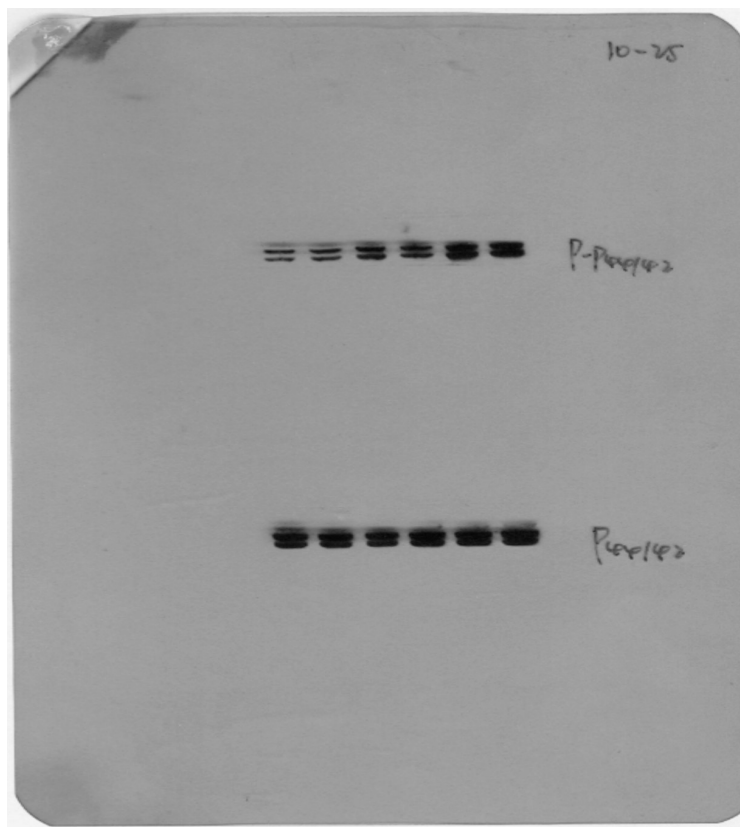
SUPPLEMENTARY FIGURES



Supplementary Figure 1: The full-length blots/gels of α -ENaC protein extracted from H441 cells exposed to 80 μ M crotonaldehyde for 0-24 h. Blots were immunostained with antibody to α -ENaC, or to β -actin as a loading control.



Supplementary Figure 2: The full-length blots/gels of γ -ENaC protein extracted from H441 cells exposed to 80 μ M crotonaldehyde for 0-24 h. Blots were immunostained with antibody to γ -ENaC.



Supplementary Figure 3: The full-length blots/gels of phosphorylated ERK1/2 in protein extracted from H441 cells exposed to 80 μ M crotonaldehyde for 0-90 min. Blots were immunostained with total ERK1/2 as a loading control.