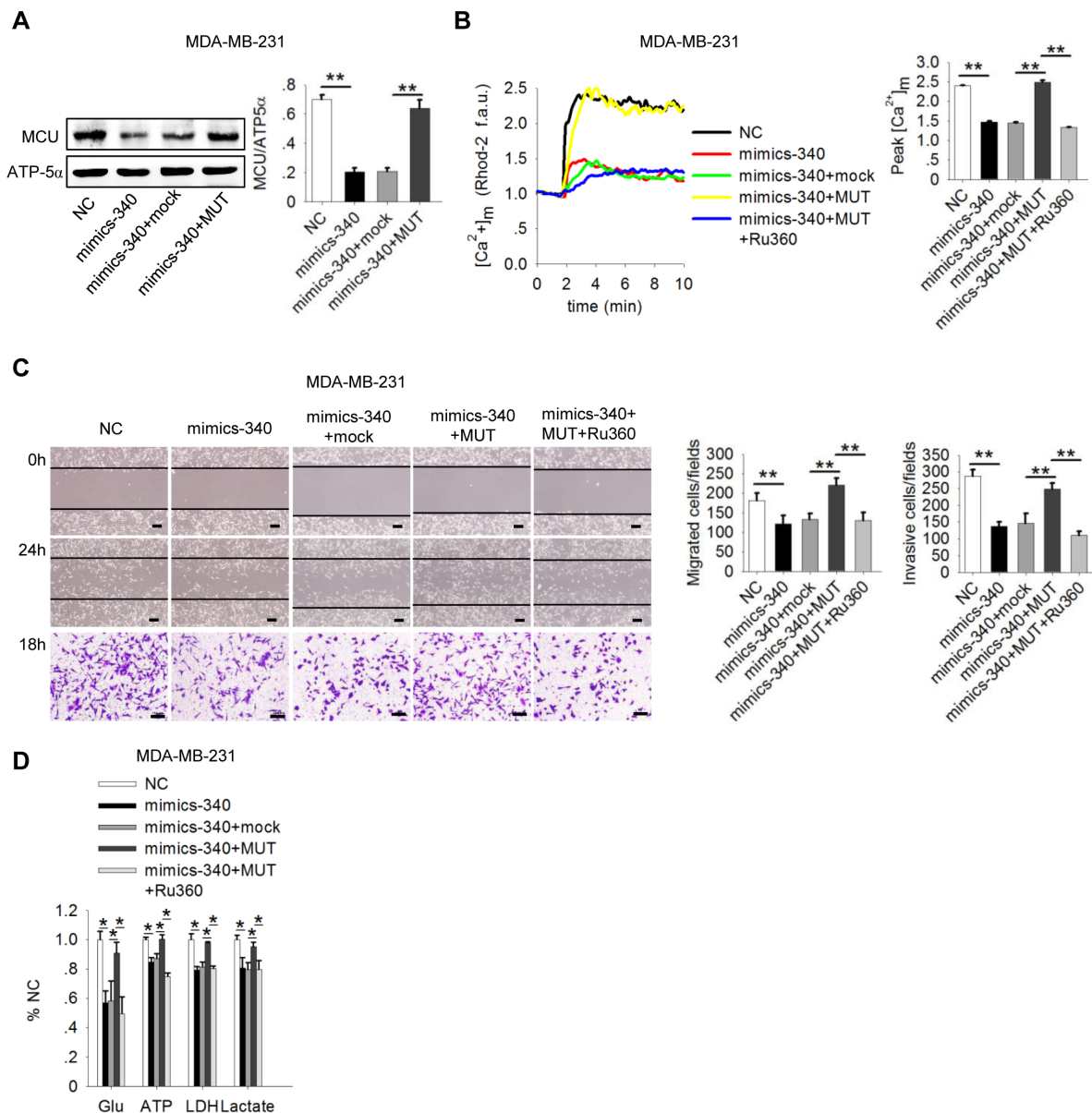


Mitochondrial calcium uniporter as a target of microRNA-340 and promoter of metastasis via enhancing the Warburg effect

SUPPLEMENTARY MATERIALS



Supplementary Figure 1: Direct targeting of MCU by miR-340 inhibits motility of and the Warburg effect in MDA-MB-231 cells. (A) Western blots showing MCU expression levels in MDA-MB-231 cells. MiR-340 was transfected or co-transfected with an MCU mutant construct in which the target sequence of miR-340 was mutated (MUT), or mock. ATP-5 α was used as an internal control. (B) Kinetics of $[Ca^{2+}]_m$ in MDA-MB-231 cells treated as in (A) and Ru360 pretreated (10 μ M, 10min) according to Rhod-2 fluorescence imaging. (C) Wound-healing (top, middle) and Transwell invasion (bottom) assays in MDA-MB-231 cells treated as in (B). (D) Glucose uptake, ATP levels, LDH levels, and lactate production in MDA-MB-231 cells treated as in (B). Scale bars: 100 μ m. The error bars in all the bar graphs represent SD. Statistical significance was determined via one-way analysis of variance followed by pairwise t-tests. * $P < 0.05$; ** $P < 0.01$.