

## **Ig-like transcript 2 (ILT2) suppresses T cell function in Chronic Lymphocytic Leukemia**

Mónica Villa-Álvarez<sup>1,2</sup>, Seila Lorenzo-Herrero<sup>1,2</sup>, Ana P Gonzalez-Rodriguez<sup>2,3</sup>, Alejandro Lopez-Soto<sup>1,2</sup> Angel R. Payer<sup>3</sup>, Esther Gonzalez-Garcia<sup>5</sup>, , Leticia Huergo-Zapico<sup>1,2</sup> and Segundo Gonzalez<sup>1,2,\*</sup>.

<sup>1</sup>Department of Functional Biology, University of Oviedo, Oviedo, Spain.

<sup>2</sup>IUOPA, University of Oviedo, Oviedo, Spain.

<sup>3</sup>Department of Hematology, Hospital Universitario Central de Asturias (HUCA), Oviedo, Spain.

<sup>4</sup>Department of Hematology, Hospital de Cabueñes, Gijón, Spain.

\*Correspondence: Segundo Gonzalez. E-mail: [segundog@uniovi.es](mailto:segundog@uniovi.es) Phone: +34 985102715

**Supplementary figure 1. HLA-G expression in B cells of healthy donors.**

Reverse transcription PCR was performed to analyze the expression of HLA-G in B cells healthy donors. The figure shows the analysis on agarose gel of the PCR products obtained from the amplification of GAPDH and HLA-G genes from mRNA obtained from purified B cells of 3 healthy donors (NC: Negative control; HD: Healthy Donor).

**Supplementary figure 2. ILT2 blockade promotes T-cell activation in healthy controls.**

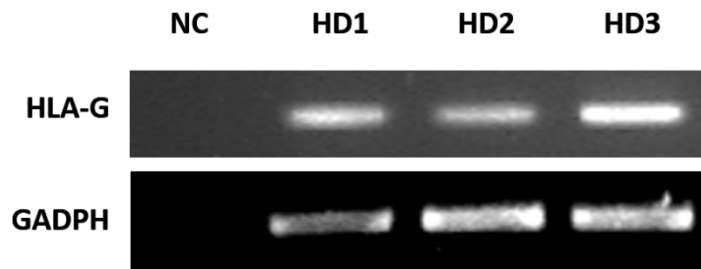
Flow cytometry analyses were conducted to evaluate the expression of CD69 in PBMCs from 7 donors stimulated with IL-2 (50 U/mL) or PHA (5 µg/mL) and incubated in the presence of anti-ILT2 blocking antibody or irrelevant IgG1 (10 µg/mL) for 48 hours. The figure shows the comparison between the surface expression of CD69 detected on T cells (**A**), CD8 T cells (**B**), CD4 T cells (**C**) and B cells (**D**). Bars represent the mean MFI of CD69 ± SEM for each condition.

**Supplementary figure 3. Effect of IL-2 and PHA stimulation in the expression of HLA-E.** Flow cytometry analyses were conducted to evaluate the expression of HLA-E in PBMCs from 5 CLL patients and 5 healthy donors stimulated with IL-2 (50 U/mL) or PHA (5 µg/mL) for 48 hours. The expression of HLA-E in B cells and leukemic cells is shown in the figure.

**Supplementary figure 4. MHC class I blockade promotes CD8 T cell activation in CLL patients.** The expression of CD69 was analyzed by flow cytometry in PBMCs from 6 CLL patients stimulated with IL-2 (50 U/mL) or PHA (5 µg/mL) and incubated in the presence of anti-HLA-G blocking antibody, anti-MHC class I blocking antibody or irrelevant IgG (10 µg/mL) for 48 hours. The expression of CD69 in CD8 T cells stimulated with IL-2 (**A**) and PHA (**B**) is shown in the figure.

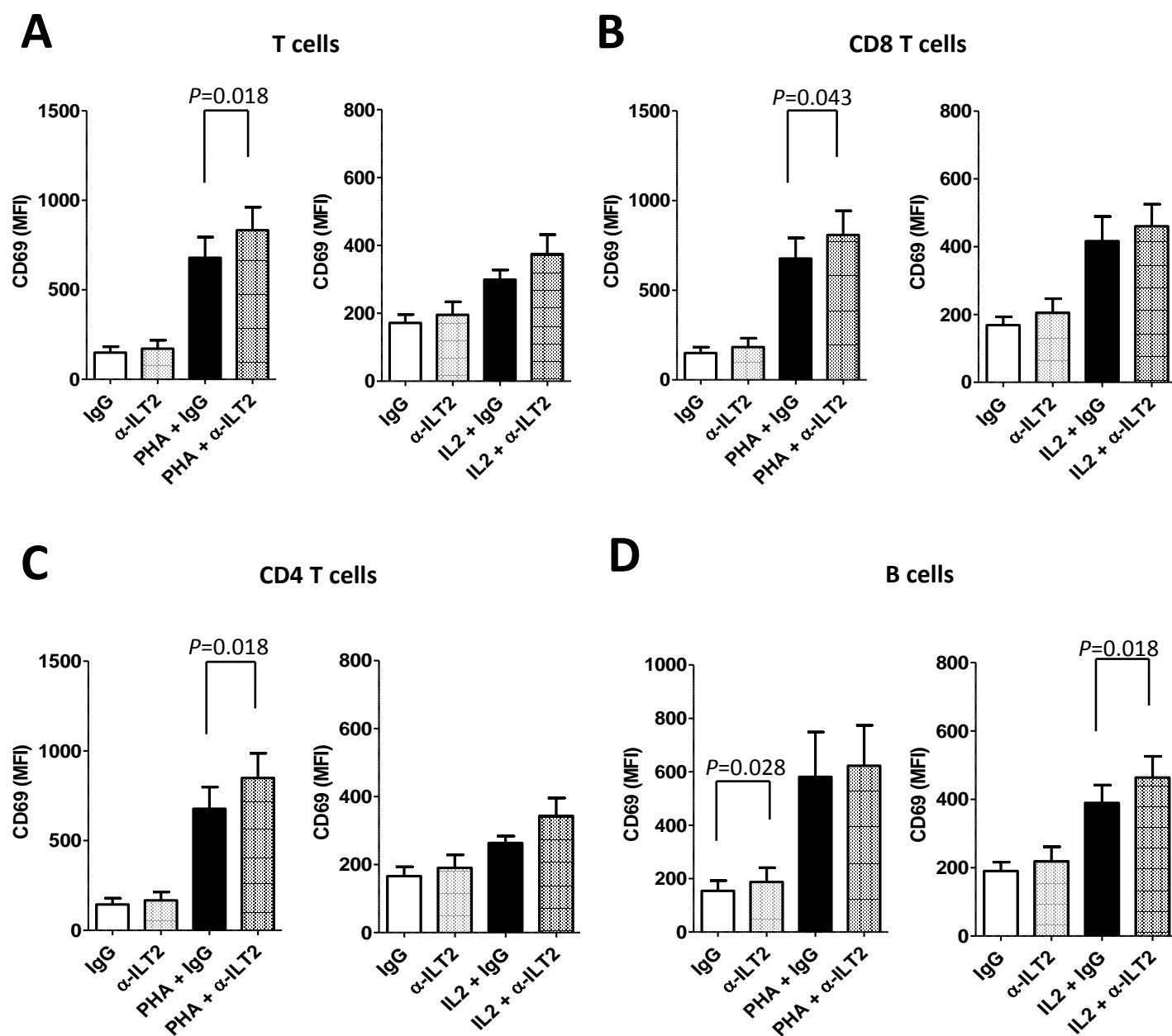
# Supplemental data

## Figure S1



# Supplemental figures

## Figure S2



**Figure S3**

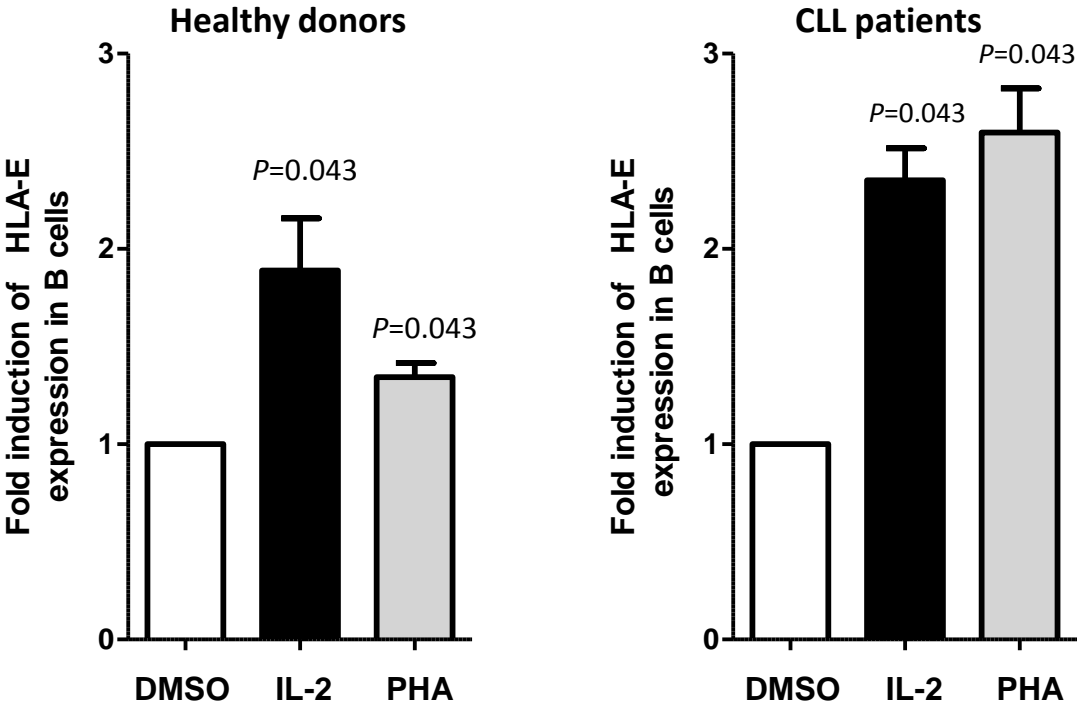


Figure S4

