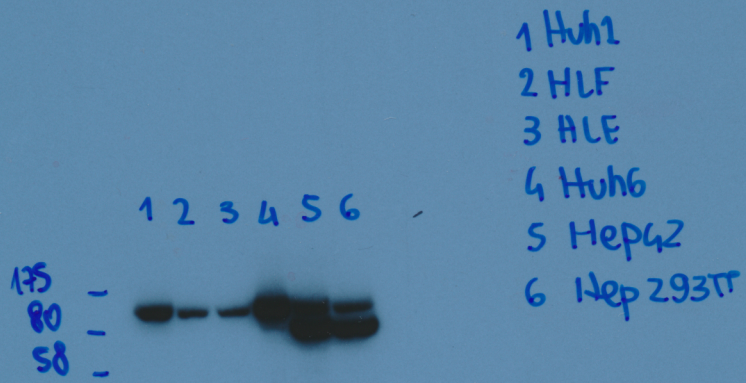


Figure 3B: β -catenin (C-term) staining, nuclear fraction.

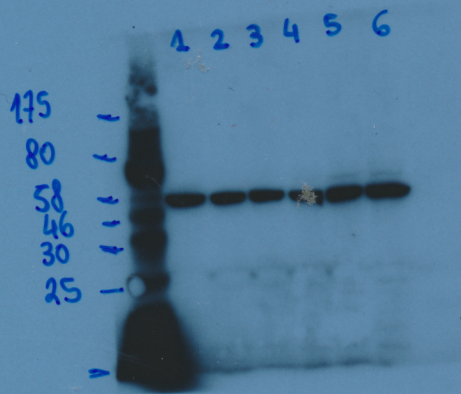
Figure 3B: β catenin (C-Term) staining, cytoplasmic staining.



(n.s.)
more bCAT 1:1000
10"
d more 1:5000

cytoplasmic fraction

rabbit β TUB n. 34 1:1000
1st exposure

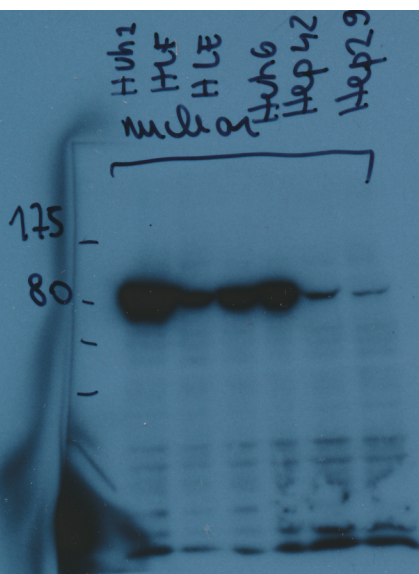


1. Huh1
2. HLF
3. HLE
4. Huh6
5. HepG2
6. Hep293T

α rabbit 1:5000

Figure 3B: Tubulin staining, cytoplasmic fraction

Figure 3B: β catenin (N-term) staining, nuclear fraction.



ΔN β cat 2bcam
Soup 1h30' NT
+
d rabbit 1:5000
1h NT

1'

Figure 3B: β catenin (N-term) staining, cytoplasmic fraction.

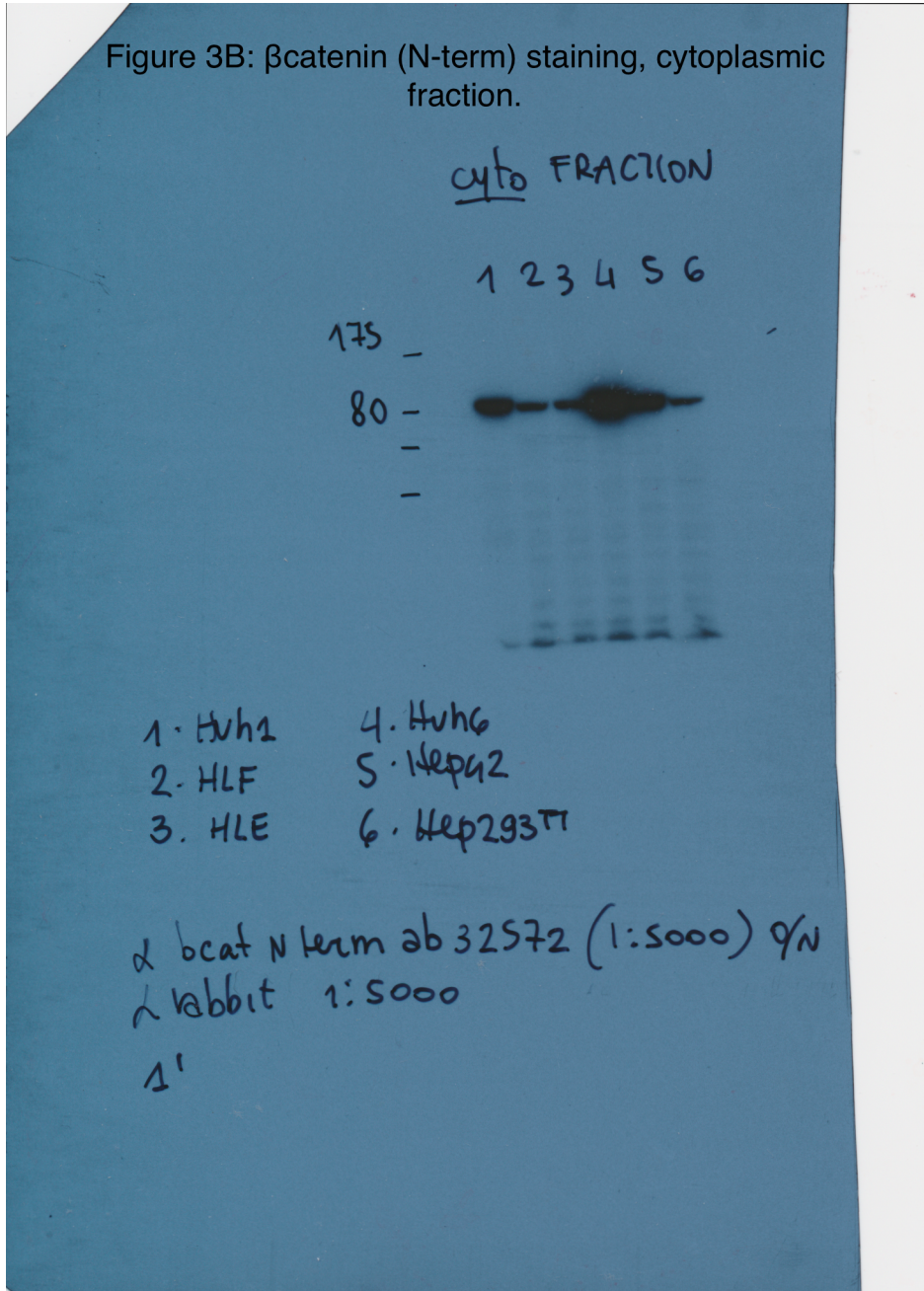


Figure 3B: PARP staining, nuclear fraction.

