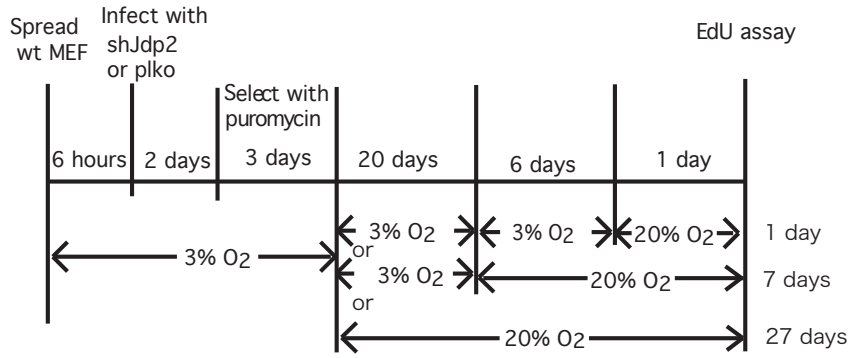
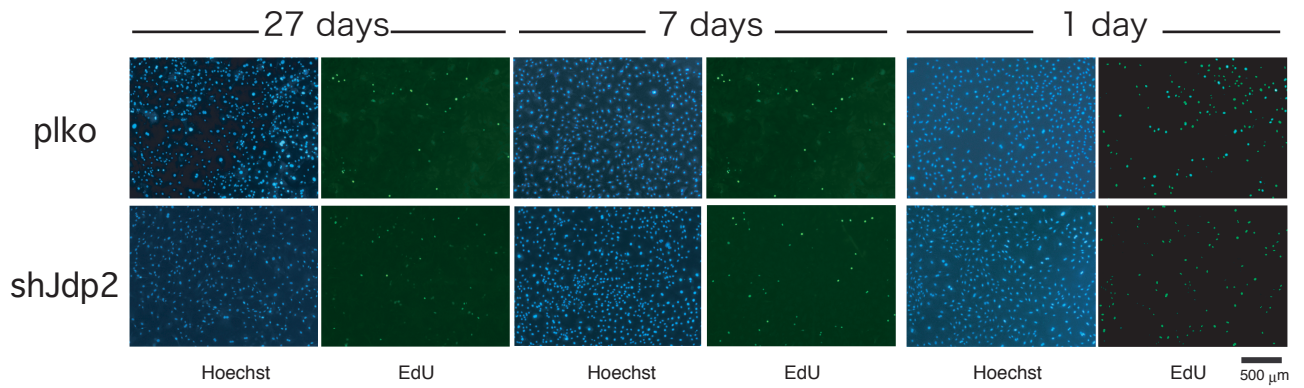


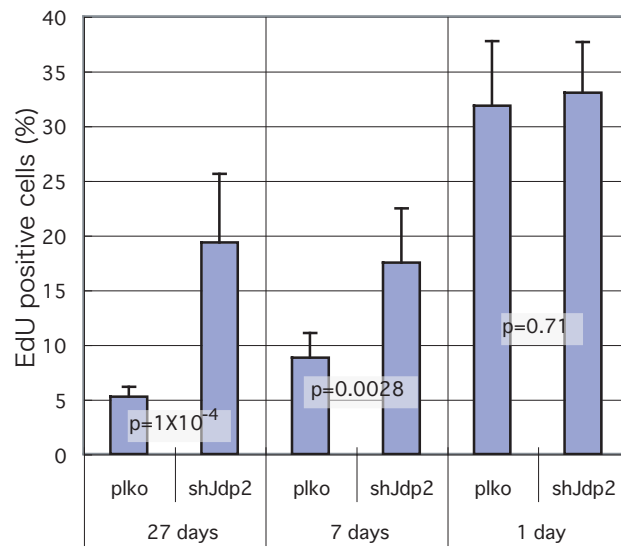
A



B



C



27 day 20%O ₂ +plko			27 day 20%O ₂ +shJdp2			7 day 20%O ₂ +plko			7 day 20%O ₂ +shJdp2			1 day 20%O ₂ +plko			1 day 20%O ₂ +shJdp2					
#	EdU + Total	Growing cells(%)	#	EdU + Total	Growing cells(%)	#	EdU + Total	Growing cells(%)	#	EdU + Total	Growing cells(%)	#	EdU + Total	Growing cells(%)	#	EdU + Total	Growing cells(%)			
#1	38	657	5.8	109	428	25.5	#1	51	562	9.0	108	670	16.1	#1	163	515	31.7	154	498	30.9
#2	52	780	6.7	87	744	11.7	#2	49	799	6.1	117	831	14.1	#2	185	619	29.9	157	408	38.5
#3	34	636	5.3	111	429	25.9	#3	40	512	7.8	113	465	24.3	#3	140	343	40.8	203	535	37.9
#4	35	707	5.0	68	548	12.4	#4	78	673	11.6	115	504	22.8	#4	163	451	36.1	102	376	27.1
#5	17	405	4.2	90	488	18.4	#5	77	685	11.2	114	724	15.7	#5	151	529	28.5	154	523	29.4
#6	34	766	4.4	97	436	22.2	#6	45	634	7.1	119	991	12.0	#6	125	520	24.0	169	494	34.2
Av.			5.2			19.4	Av.			8.8			17.5	Av.			31.8			33.0
SD			0.9			6.3	SD			2.2			4.9	SD			5.9			4.6
p			1X10 ⁻⁴				p			0.0028				p			0.71			