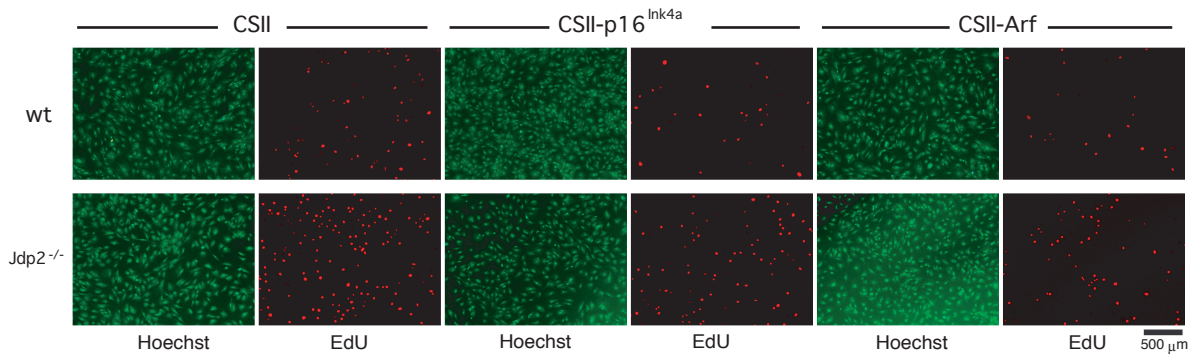
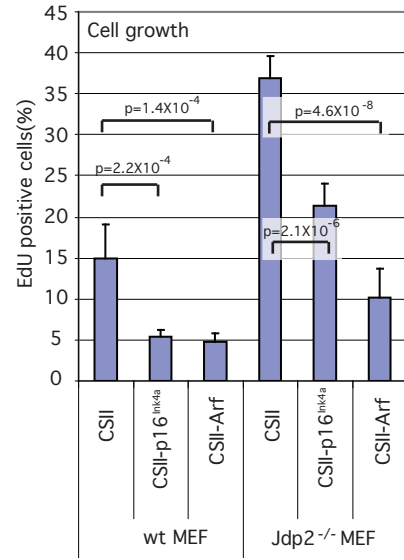


A

The numbers of growing and total cell

wt MEF									
	CSII			CSII-p16 ^{Ink4a}			CSII-Arf		
	EdU +	Total	Growing cells(%)	EdU +	Total	Growing cells(%)	EdU +	Total	Growing cells(%)
#1	49	381	12.9	28	582	4.8	20	383	5.2
#2	50	241	20.7	36	530	6.8	22	410	5.4
#3	27	303	8.9	33	555	5.9	16	426	3.8
#4	53	317	16.7	29	536	5.4	19	495	3.8
#5	52	380	13.7	29	638	4.5	21	520	4.0
#6	69	413	16.7	28	538	5.2	32	501	6.4
Av.			14.9			5.5			4.8
SD			4.1			0.8			1.1

Jdp2 ^{-/-} MEF									
	CSII			CSII-p16 ^{Ink4a}			CSII-Arf		
	EdU +	Total	Growing cells(%)	EdU +	Total	Growing cells(%)	EdU +	Total	Growing cells(%)
#1	129	351	36.8	86	443	19.4	67	473	14.2
#2	146	370	39.5	77	388	19.8	61	413	14.8
#3	129	373	34.6	96	424	22.6	33	388	8.5
#4	169	424	39.9	141	545	25.9	35	379	9.2
#5	184	491	37.5	123	564	21.8	36	449	8.0
#6	156	476	32.8	65	359	18.1	30	498	6.0
Av.			36.8			21.3			10.1
SD			2.8			2.8			3.5



B

