

## Expanded View Figures

**Figure EV1. Centromeric regions of *Leishmania major* and *Trypanosoma brucei*.**

- A Absence of synteny between the centromeric regions of *L. major* and *T. brucei*: The flanking genes for the chr. #12 centromere in *Leishmania* are LmjF12.0510 and .0520; their orthologues in *T. brucei* are Tb927.1.3560 and Tb927.1.3820; the first one is separated from the centromere of Tb Chr. #1 by one gene, whereas the second one is nearby but separated by an rDNA cluster, several putative genes and two SSRs. Screenshots from TryTripDB.
- B, C *L. major* chromosome 30: centromere (LmKKT1 binding site) and known genome landmarks. (B) View of the whole chromosome. (C) Zoom-in view.

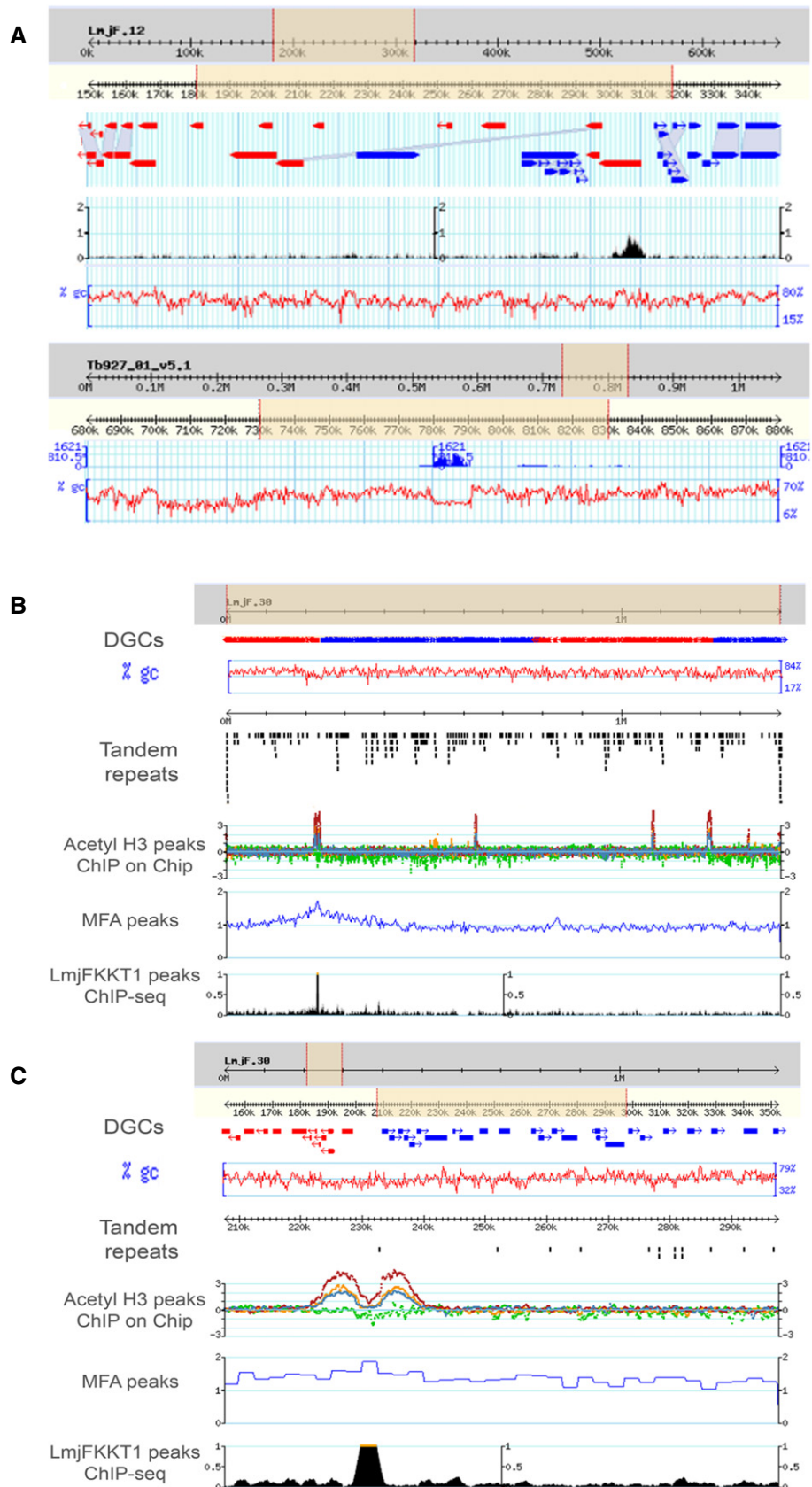


Figure EV1.