



Article

Integration of C₁ and C₂ Metabolism in Trees

Kolby J. Jardine ^{1,*}, Vinicius Fernandes de Souza ², Patty Oikawa ³, Niro Higuchi ², Markus Bill ¹, Rachel Porras ¹, Ülo Niinemets ^{4,5} and Jeffrey Q. Chambers ^{1,6}

¹ Climate Science Department, Earth Science Division, Lawrence Berkeley National Laboratory, One Cyclotron Rd, building 64-241, Berkeley, CA 94720, USA; mbill@lbl.gov (M.B.); rcporras@lbl.gov (R.P.); jchambers@lbl.gov (J.Q.C.)

² National Institute for Amazon Research, Ave. Andre Araujo 2936, Campus II, Building LBA, Manaus AM 69.080-97, Brazil; viniciusfernandes11@yahoo.com.br (V.F.d.S.); higuchi.niro@gmail.com (N.H.)

³ Department of Earth and Environmental Sciences, California State University, East Bay, North Science 329, 25800 Carlos Bee Boulevard, Hayward, CA 94542, USA; patty.oikawa@csueastbay.edu

⁴ Department of Plant Physiology, Estonian University of Life Sciences, Kreutzwaldi 1, 51014 Tartu, Estonia; ylo@emu.ee

⁵ Estonian Academy of Sciences, Kohtu 6, 10130 Tallinn, Estonia

⁶ Department of Geography, University of California Berkeley, 507 McCone Hall #4740, Berkeley, CA 94720, USA

* Correspondence: kjjardine@lbl.gov; Tel.: +55-(92)-99200-7280

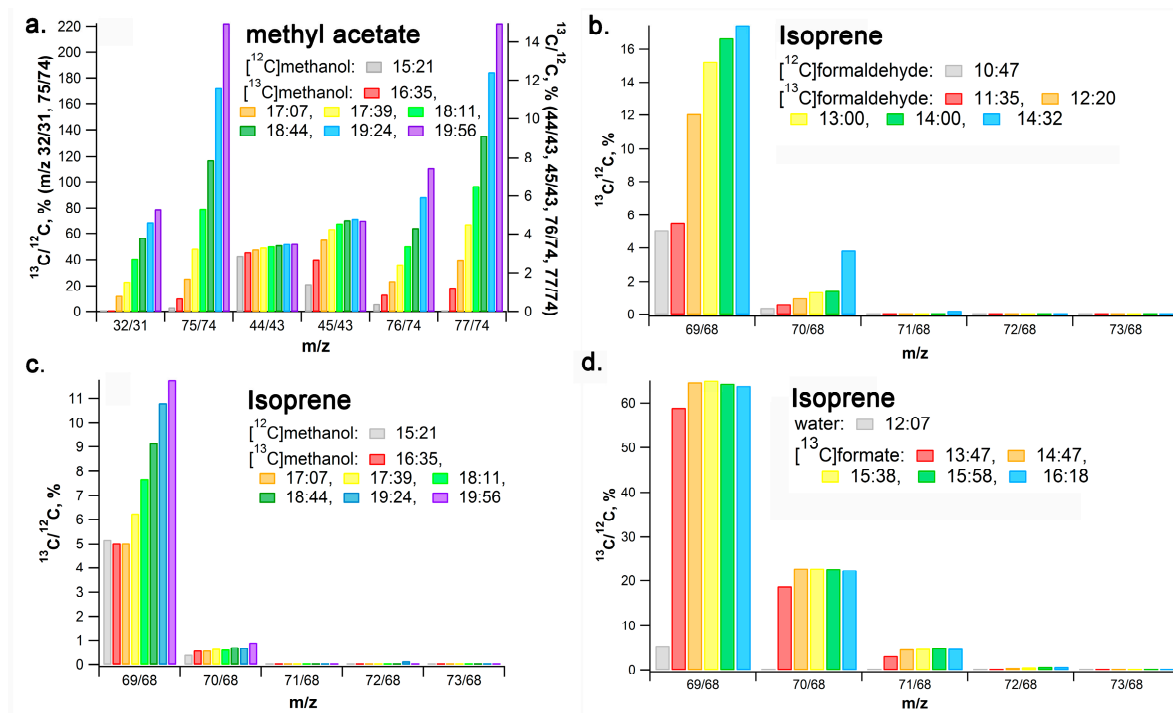


Figure S1. Example time series of $^{13}\text{C}/^{12}\text{C}$ ratios of methyl acetate (a) and isoprene (b-d) emissions determined by thermal desorption GC-MS during continuous ^{13}C methanol, ^{13}C formaldehyde, and ^{13}C formate labeling of an *I. edulis* branch.



© 2017 by the authors. Submitted for possible open access publication under the terms and conditions of the Creative Commons Attribution (CC BY) license (<http://creativecommons.org/licenses/by/4.0/>).