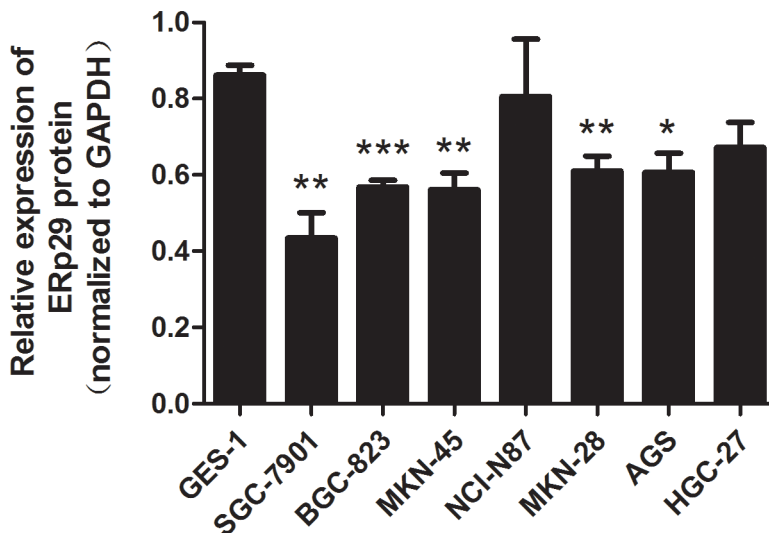
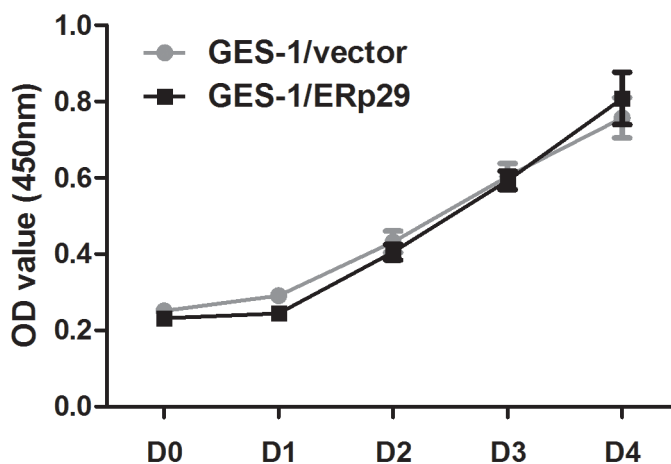


ERp29 inhibits tumorigenicity by suppressing epithelial mesenchymal transition in gastric cancer

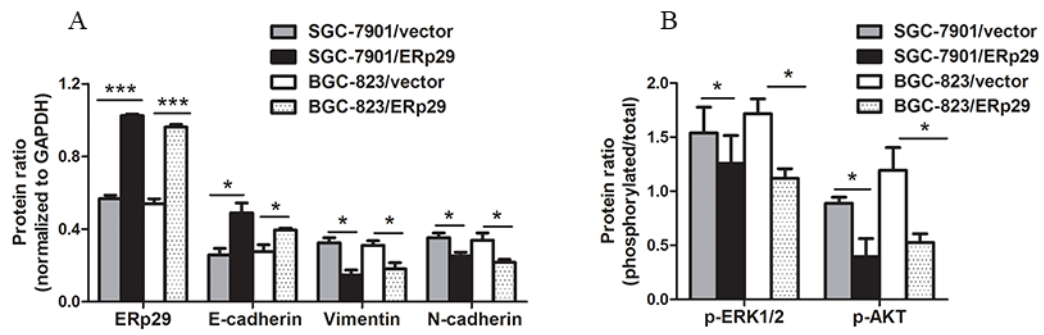
SUPPLEMENTARY MATERIALS



Supplementary Figure 1: Relative expression of ERp29 protein in human gastric cancer cell lines and normal gastric mucosal epithelial cell line. (Compared to GES-1 ***P < 0.001, **P < 0.01, *P < 0.05).



Supplementary Figure 2: Effects of ERp29 overexpression on cell growth in GES-1.



Supplementary Figure 3: Protein ratio of EMT markers, ERK1/2 and AKT phosphorylation levels. (A) Protein ratio of EMT markers in SGC-7901 and BGC-823 cells (* $P < 0.05$). **(B)** Protein ratio of ERK1/2 and AKT phosphorylation levels in SGC-7901 and BGC-823 cells (* $P < 0.05$).