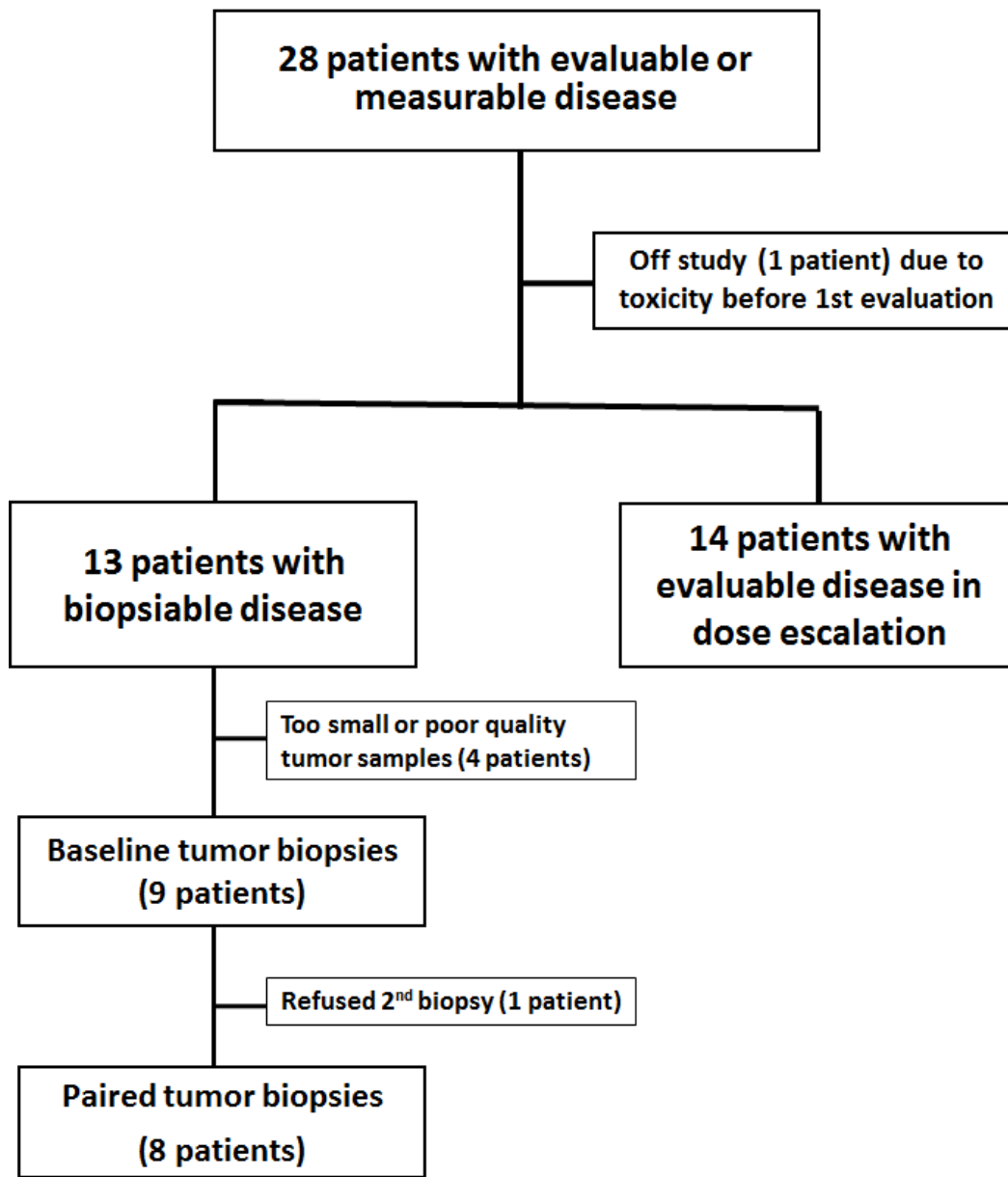


# Phase I/Ib study of olaparib and carboplatin in women with triple negative breast cancer

## Supplementary Material



Supplementary Figure1: Consort diagram

## Supplementary Table 1

### 1A. Comparison of Initial Biopsy

	<i>P-value</i>	<i>Mean</i> ( <i>PFS</i> ≥ <i>4m</i> )	<i>Mean</i> ( <i>PFS</i> < <i>4m</i> )	<i>t ratio</i>
Cyclin_D1-R-V	0.000000e+000	10.8627	18.4622	22.6259
Collagen VI-R-V	1.901754e-031	5.1149	9.11149	11.8991
Histone H3-R-V	4.585174e-007	3.94642	2.2462	5.06207
YAP-R-E	6.465813e-007	3.10308	4.78084	4.9952

### 1B. Comparison of Change between pretreatment and post-cycle 1 treatment

	<i>P-value</i>	<i>Mean</i> ( <i>PFS</i> ≥ <i>4m</i> )	<i>Mean</i> ( <i>PFS</i> < <i>4m</i> )	<i>t ratio</i>
Cyclin_D1-R-V	0.000000e+000	7.55462	-6.50367	14.0583
Collagen VI-R-V	3.658234e-028	1.85251	-3.57806	5.43057
Myosin-11-R-V	4.428060e-013	3.53862	0.0	3.53862
YAP-R-E	3.968270e-007	0.90701	-1.5611	2.46811
Fibronectin-R-V	0.00044133	1.74507	0.037842	1.70723