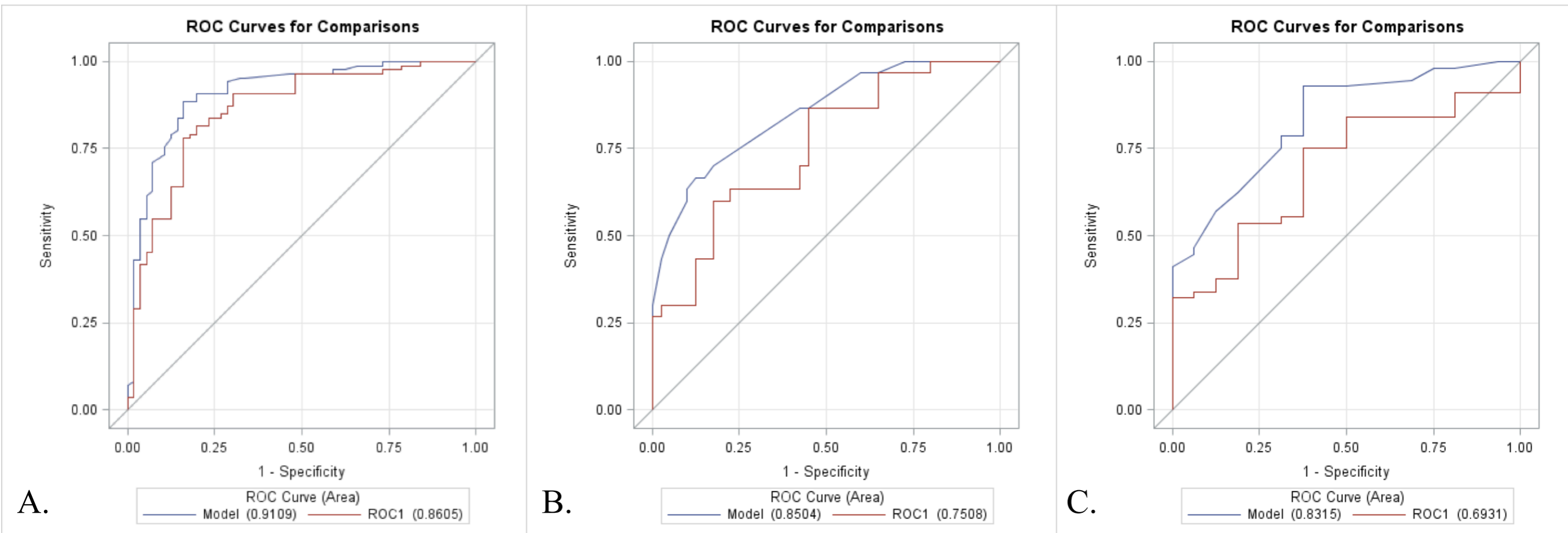


# **SUPPLEMENTAL MATERIAL**

**Figure S1.** Comparative receiver operator characteristic (ROC) curve with area under the ROC presented for the full model ("Model") and cross-validated model ("ROC1").



ROC curves are presented for all patients (A, n=152), and stratified by endovascular treatment (B, n=73) or no endovascular treatment (C, n=76).