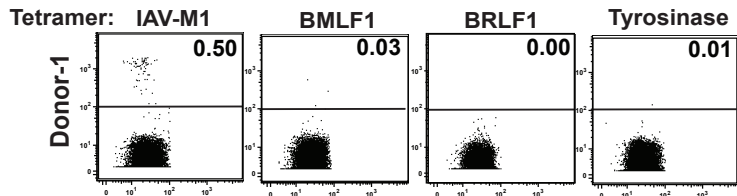
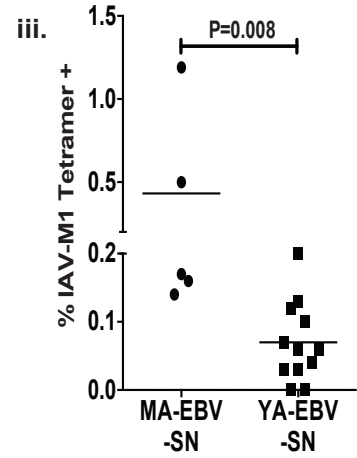
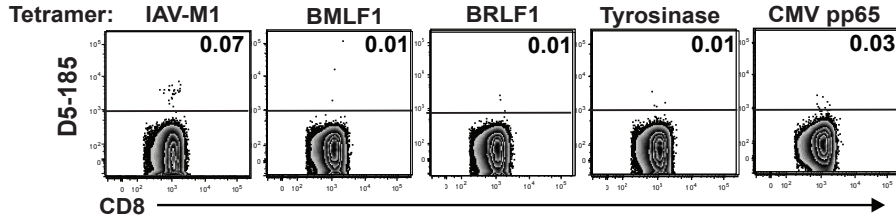


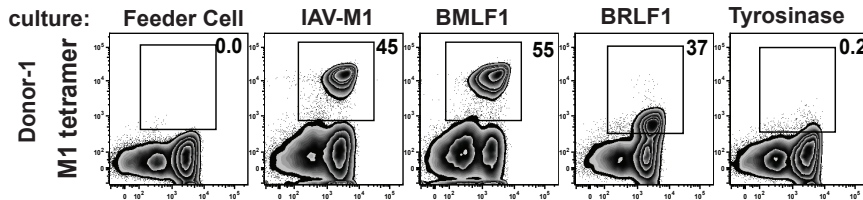
a. i. Middle Aged Adult EBV Sero-Negative (MA-EBV-SN)



ii. Young Adult EBV Sero-Negative (YA-EBV-SN)



b. i. Middle Aged Adult EBV Sero-Negative (MA-EBV-SN)



ii. Young Adult EBV Sero-Negative (YA-EBV-SN)

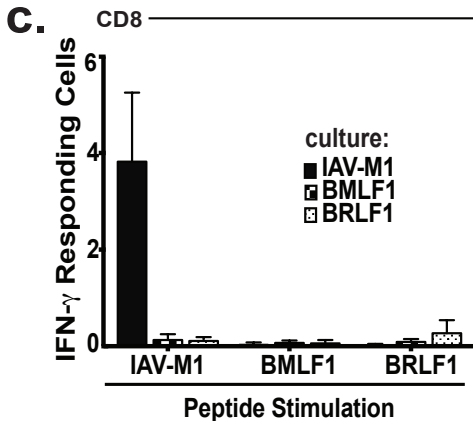
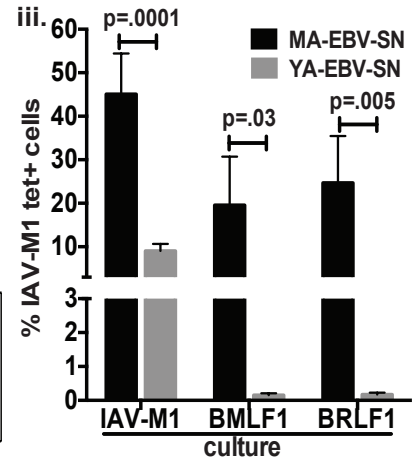
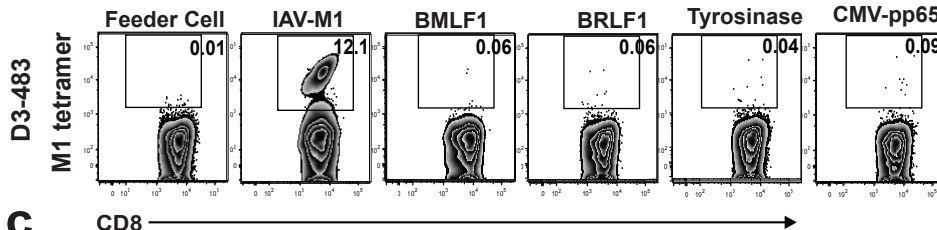


Figure S1: *Increased frequency of IAV-M1-specific CD8 T-cells directly ex vivo in MA-EBV-SN donors (a) proliferate in response to EBV-lytic antigens (b).* (a.) Representative tetramer binding in MA-EBV-SN (i) and YA-EBV-SN (ii) donors on sorted CD8 T-cells from PBMC (gated on live CD3+CD8+ cells). iii) Mean frequency of IAV-M1-tetramer+ cells. (b.) Representative IAV-M1-tetramer staining in short-term-cultures from MA-EBV-SN (i) or YA-EBV-SN donors (ii). IAV-M1-tetramer+ cells in MA-EBV-SN donors proliferated after IAV-M1, BMLF1 and BRLF1-stimulation in culture. (iii) Mean frequency of IAV-M1-tetramer+ cells in cultures of MA-EBV-SN vs YA-EBV-SN donors (n=5-10 donors/group). (c.) No expansion of IAV-M1-specific CD8 T-cells to EBV-lytic antigens in naïve cord blood (n=5).