

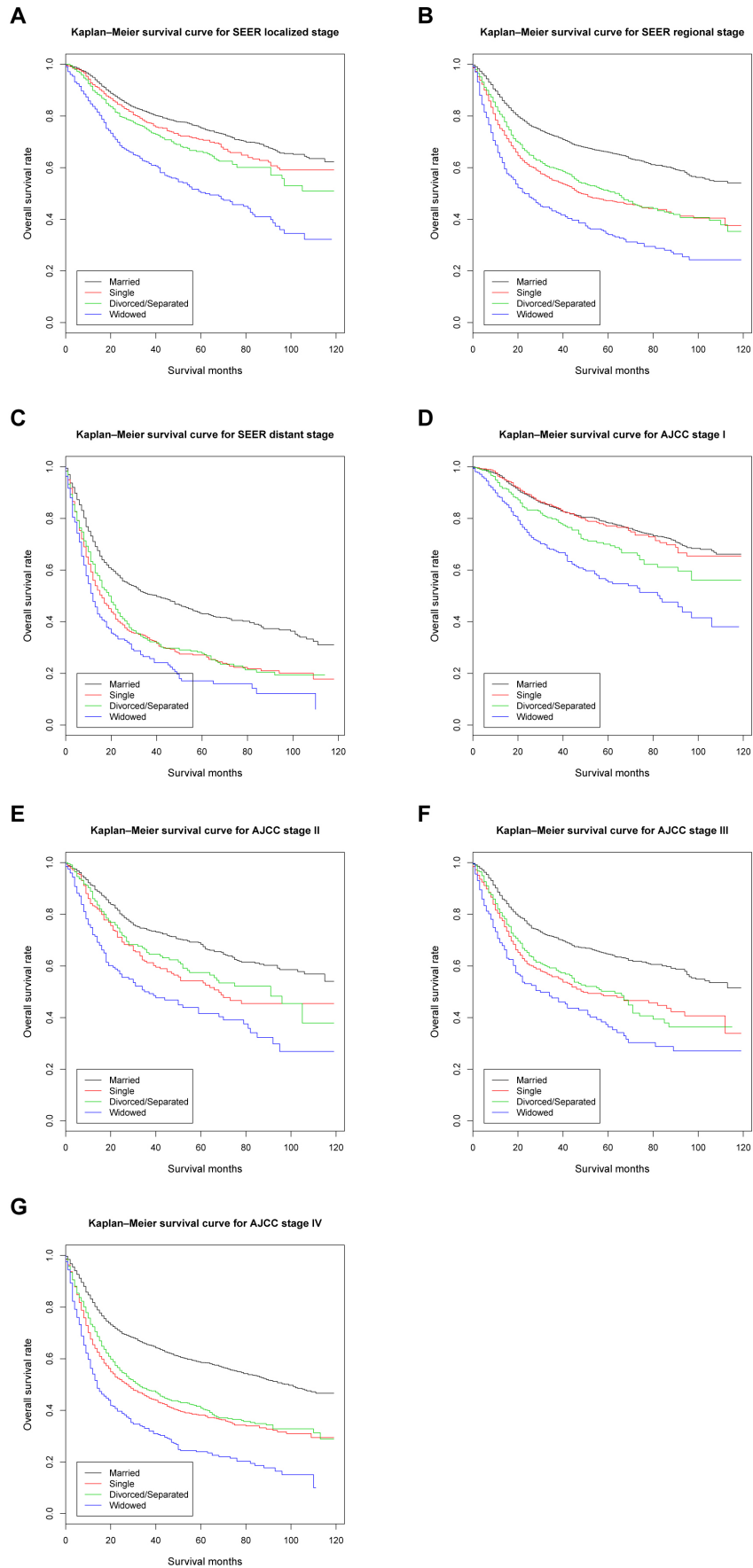
The influence of marital status on survival in patients with oral tongue squamous cell carcinoma

Supplementary Materials

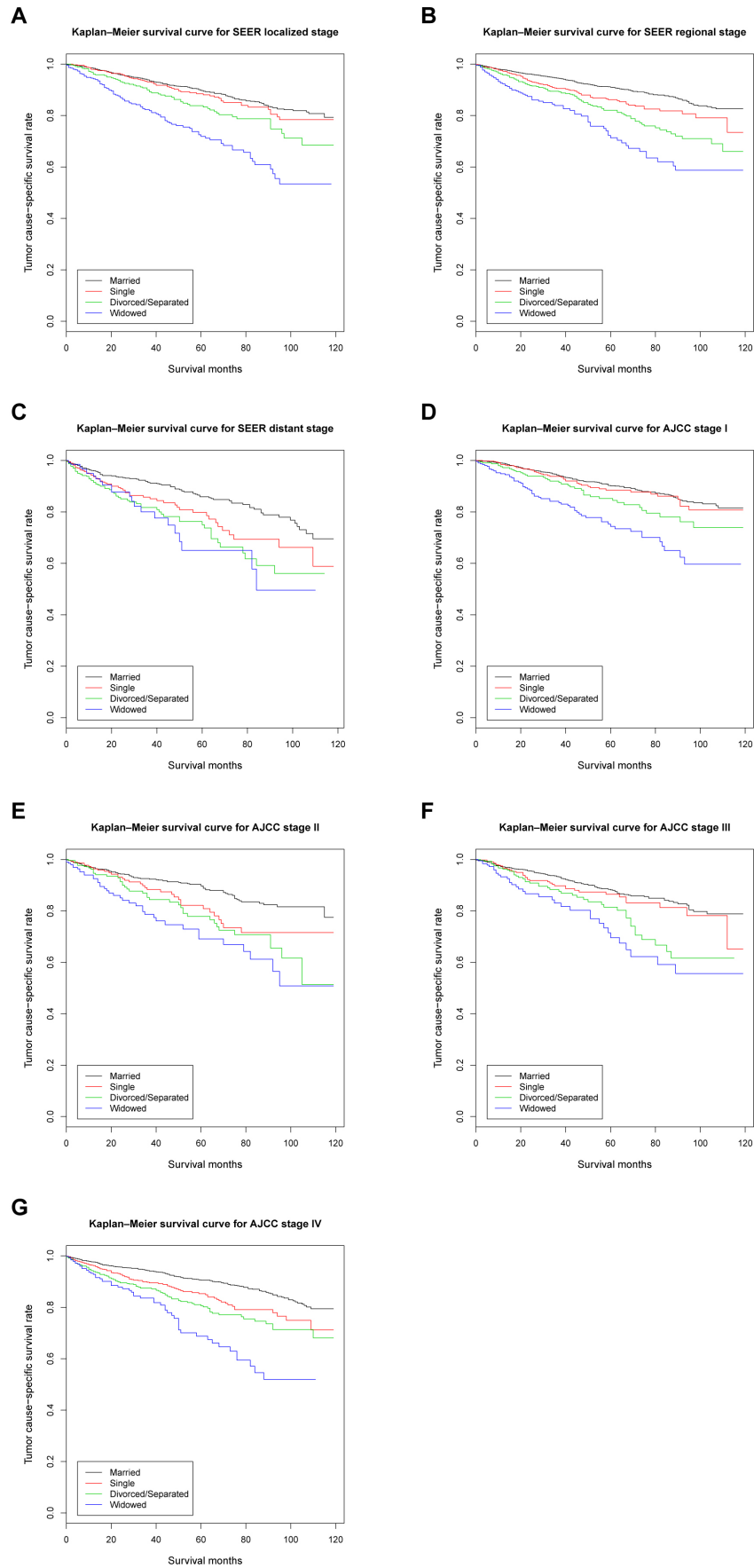
Supplementary Table 1: Pairwise comparison of univariate analysis among married, single, divorced/separated and widowed group

Characteristic	Overall survival		Tumor cause-specific survival	
	Log Rank χ^2 test	<i>P</i> value	Log Rank χ^2 test	<i>P</i> value
Married-Single	239	< 0.001	23.1	< 0.001
Married-Divorced/Separated	196	< 0.001	92.6	< 0.001
Married-Widowed	416	< 0.001	204	< 0.001
Single-Divorced/Separated	0	0.943	13.9	< 0.001
Single-Widowed	43.5	< 0.001	61.9	< 0.001
Divorced/Separated-Widowed	40.3	< 0.001	18.4	< 0.001

Notes: OS, overall survival; TCSS, tumor cause-specific survival.



Supplementary Figure 1: Kaplan-Meier survival curves: the overall survival in patients with oral tongue squamous cell carcinoma according to marital status. (A) SEER localized stage: $\chi^2 = 133$, $P < 0.001$; **(B)** SEER regional stage: $\chi^2 = 334$, $P < 0.001$; **(C)** SEER distant stage: $\chi^2 = 106$, $P < 0.001$; **(D)** AJCC stage I: $\chi^2 = 77.5$, $P < 0.001$; **(E)** AJCC stage II: $\chi^2 = 65.8$, $P < 0.001$; **(F)** AJCC stage III: $\chi^2 = 94.7$, $P < 0.001$; **(G)** AJCC stage IV: $\chi^2 = 400$, $P < 0.001$.



Supplementary Figure 2: Kaplan-Meier survival curves: the tumor cause-specific survival in patients with oral tongue squamous cell carcinoma according to marital status. (A) SEER localized stage: $\chi^2 = 97.4$, $P < 0.001$; (B) SEER regional stage: $\chi^2 = 118$, $P < 0.001$; (C) SEER distant stage: $\chi^2 = 30.1$, $P < 0.001$; (D) AJCC stage I: $\chi^2 = 58.4$, $P < 0.001$; (E) AJCC stage II: $\chi^2 = 38.9$, $P < 0.001$; (F) AJCC stage III: $\chi^2 = 35.2$, $P < 0.001$; (G) AJCC stage I: $\chi^2 = 108$, $P < 0.001$.