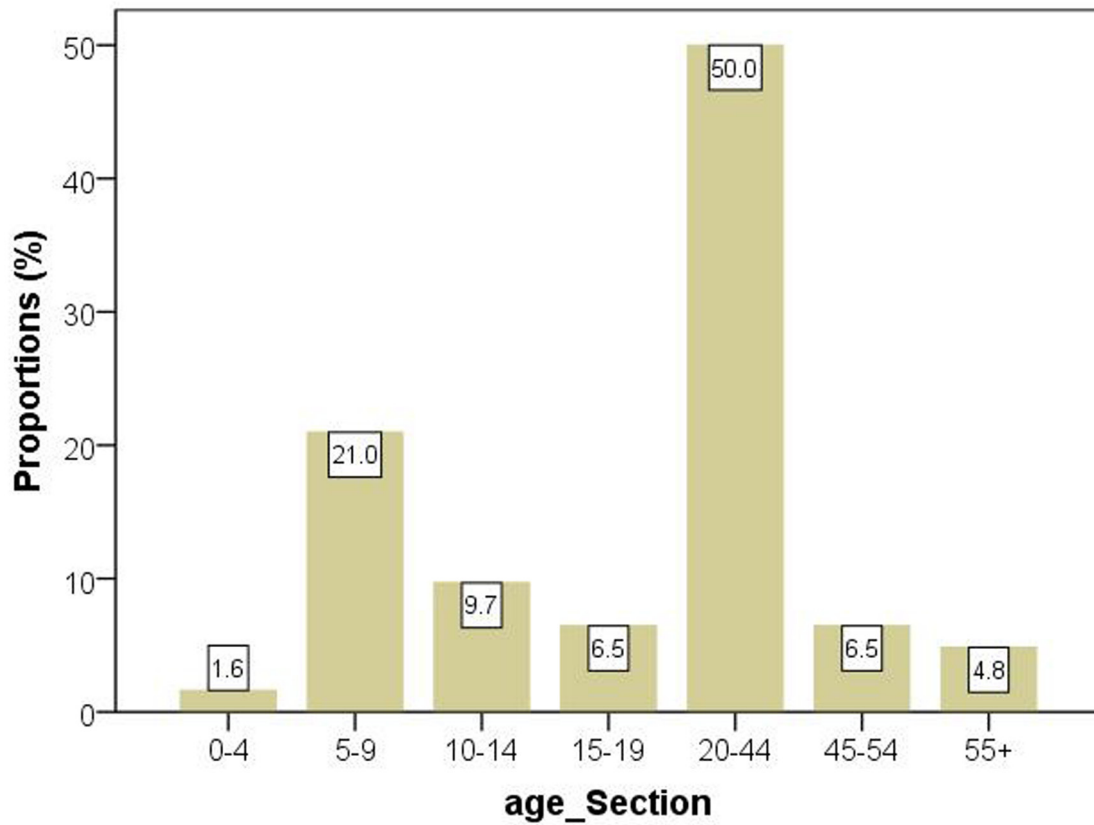


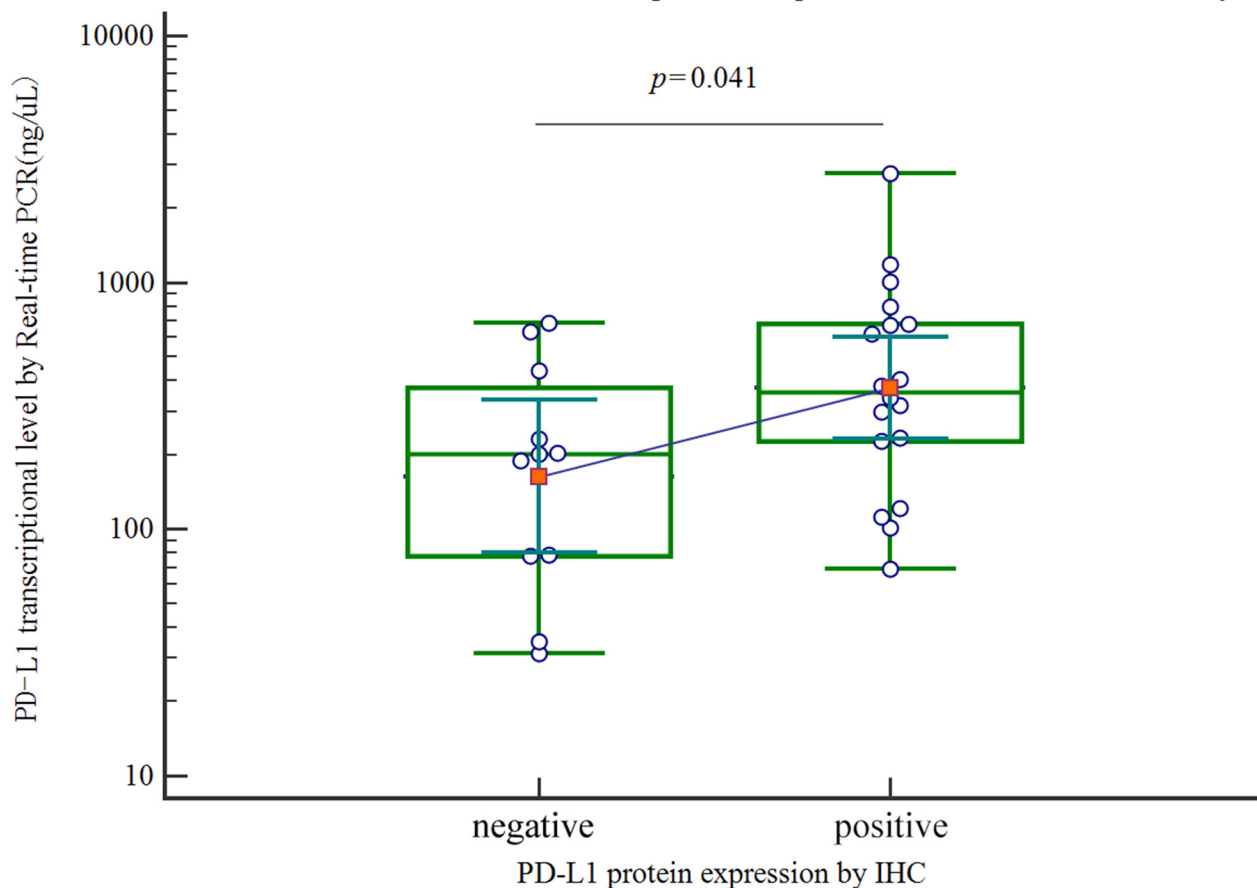
Genetic and immune features of resectable malignant brainstem gliomas

SUPPLEMENTARY MATERIALS



Supplementary Figure 1: Shows the age distribution of the included patients.

The correlation between the transcriptional and protein levels of PD-L1 in the study



Supplementary Figure 2: Shows that transcriptional level of PD-L1 was significantly higher in the positive PD-L1 staining group than the negative PD-L1 staining, which was detected by the IHC method.

Supplementary Table 1: Distribution of genetic features of resectable brainstem gliomas in patients at different ages

Genetic features		Children and adolescents (0-19 years)				Adults (≥ 20 years)		
		0-4	5-9	10-14	15-19	20-44	45-54	55+
IDH1/2	MUT	0	0	0	0	7	2	0
	WT	1	13	6	4	24	2	3
H3.3	MUT	0	10	5	4	16	1	1
	WT	1	3	1	0	15	3	2
PPM1D	MUT	0	3	1	1	7	1	0
	WT	1	10	5	3	24	3	3
TP53	MUT	0	6	4	3	13	2	0
	WT	1	7	2	1	18	2	3
MGMT	M	0	0	0	0	5	1	1
	UM	1	13	6	4	25	3	2