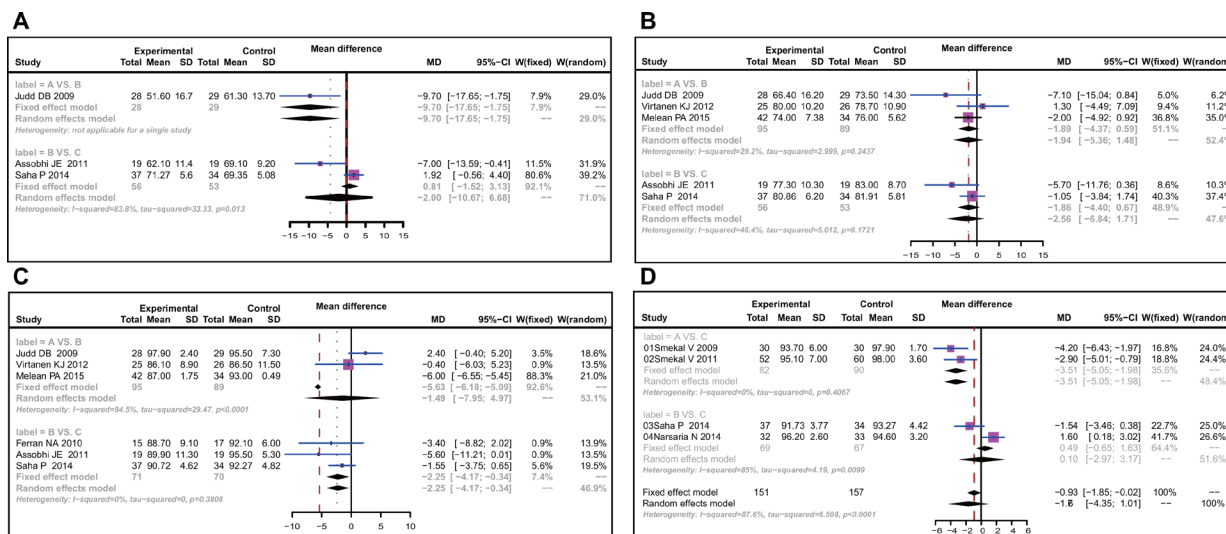
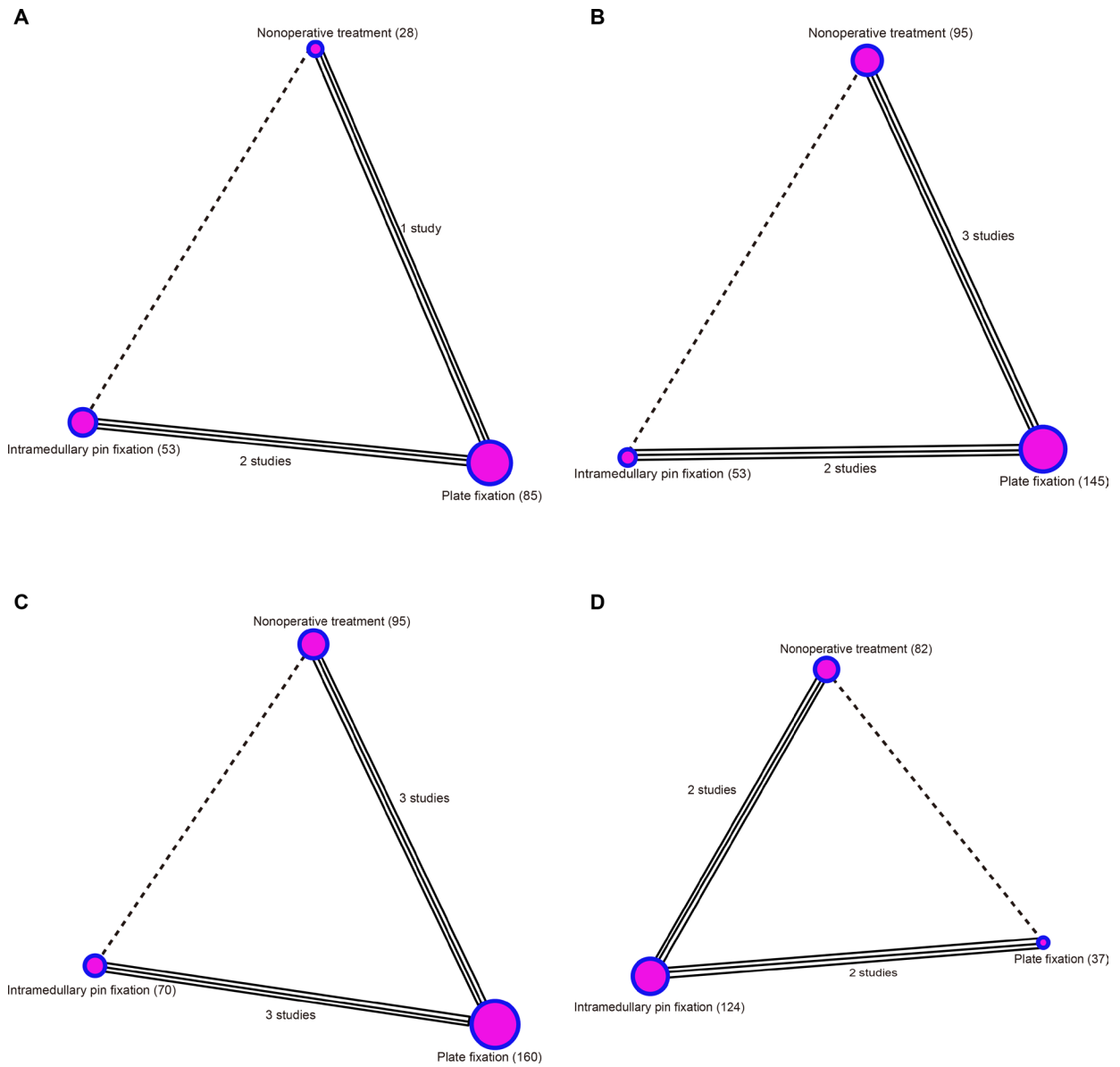


Meta-analysis of differences in Constant-Murley scores for three mid-shaft clavicular fracture treatments

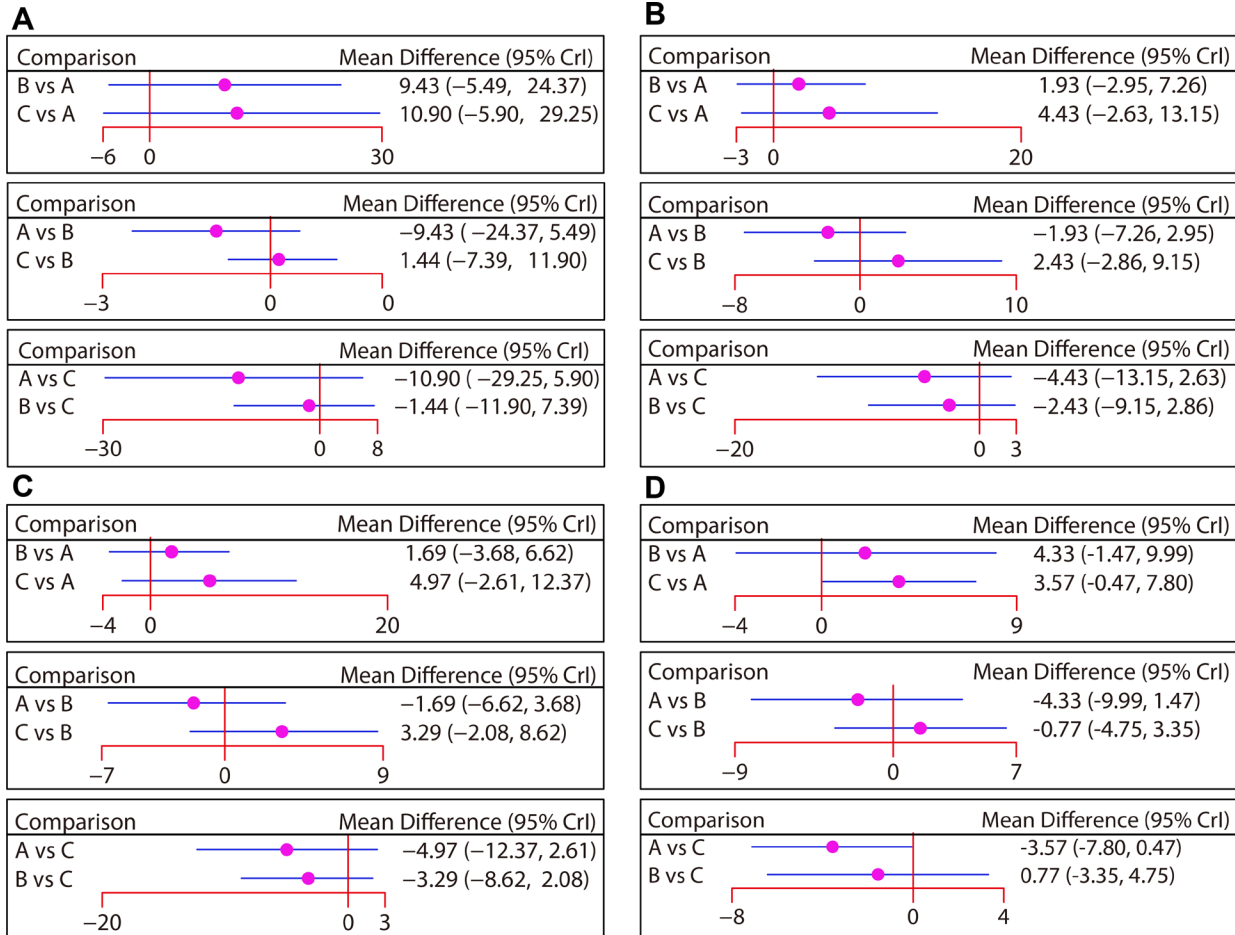
Supplementary Materials



Supplementary Figure 1: Forest plots comparing the efficacy of three treatments in patients with clavicle fracture in terms of CMS follow-up time. The follow-up times were six weeks, three months, 12 months and 24 months. (A) Non-operative treatment. (B) Plate fixation. (C) intramedullary pin fixation. CMS, Constant-Murley Score.



Supplementary Figure 2: Network diagram comparing the efficacy of three treatments in patients with clavicle fracture in terms of CMS follow-up time. The follow-up times were six weeks, three months, 12 months and 24 months. CMS, Constant-Murley Score.



Supplementary Figure 3: Forest plots of the relationships between efficacy comparisons for three treatments in patients with clavicle fracture in terms of CMS follow-up time. The follow-up times were six weeks, three months, 12 months and 24 months. (A) Non-operative treatment. (B) Plate fixation. (C) intramedullary pin fixation. CMS, Constant-Murley Score.