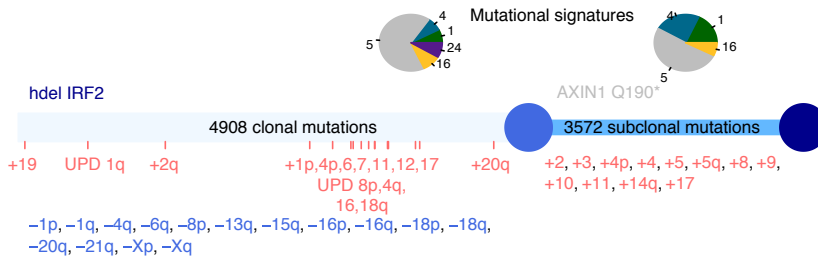
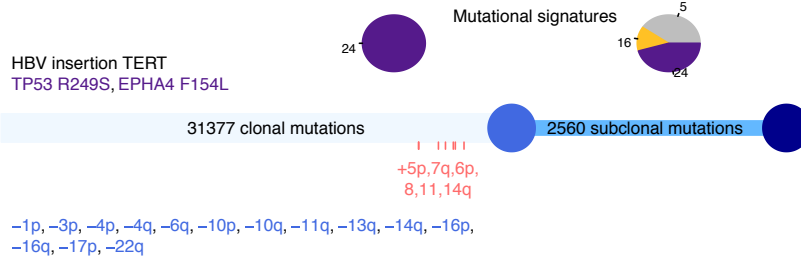


HBV

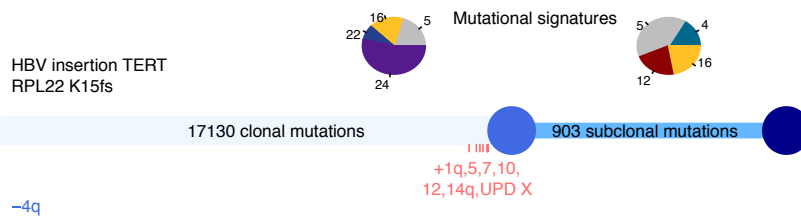
CHC018T, Female, 35yo, Africa
HCC, F2-F3, 17cm, Hepatitis.B
Drivers: AXIN1, IRF2



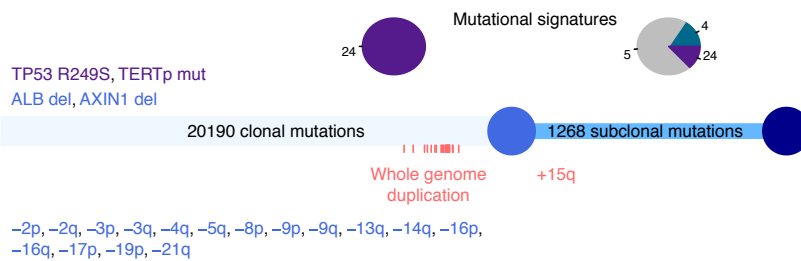
CHC1704T, Male, 43yo, Africa
HCC, F2-F3, 14cm, Hepatitis.B
Drivers: TERT, TP53, EPHA4



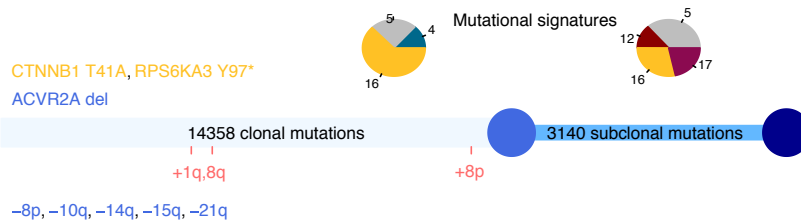
CHC1717T, Male, 50yo, Africa
HCC, F4, 55cm, Hepatitis.B
Drivers: TERT, RPL22



CHC1754T, Male, 34yo, Africa
HCC, F2-F3, 17cm, Hepatitis.B
Drivers: TERT, TP53, AXIN1, ALB

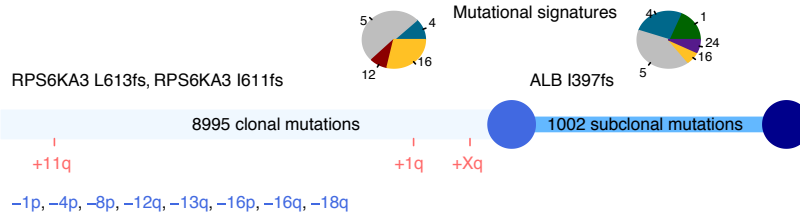


CHC2103T, Male, 56yo, Europe
HCC, F0-F1, 3.8cm, Alcohol.Intake - Hepatitis.B - Hepatitis.C - Tobacco
Drivers: CTNNB1, ACVR2A, RPS6KA3

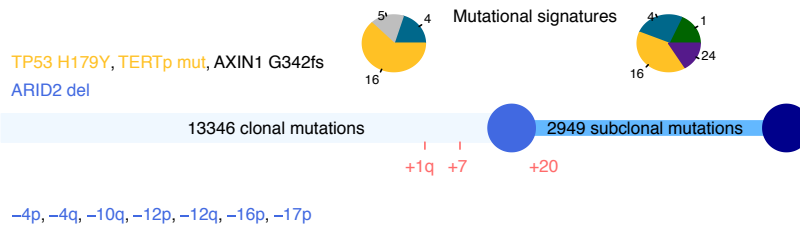


HCV

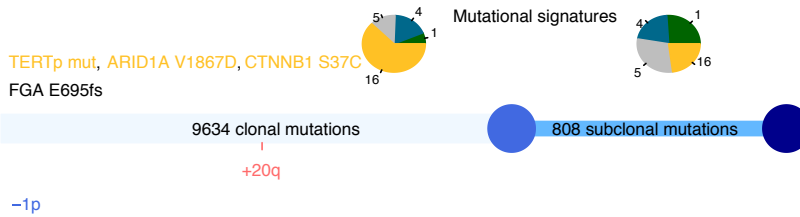
CHC309T, Female, 69yo, Europe
HCC, F2-F3, 2cm, Hepatitis.C
Drivers: ALB, RPS6KA3



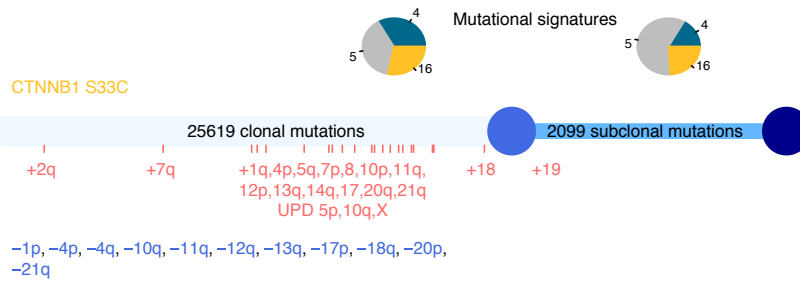
CHC314T, Male, 71yo, Europe
HCC, F2-F3, 4.5cm, Alcohol.Intake - Hepatitis.C
Drivers: TERT, TP53, AXIN1, ARID2



CHC320T, Male, 65yo, Europe
HCC, F4, 3.5cm, Alcohol.Intake - Hepatitis.C
Drivers: TERT, CTNNB1, ARID1A, FGA

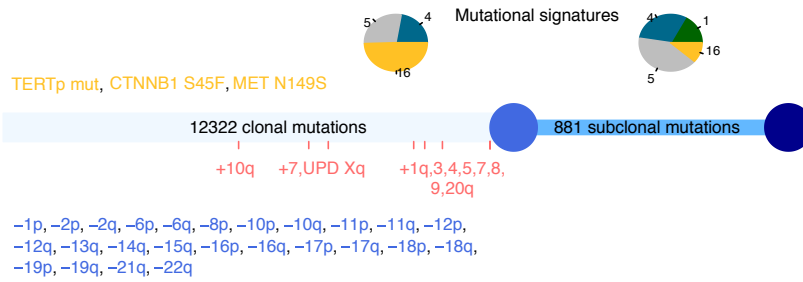


CHC912T, Male, 78yo, Europe
HCC, F0-F1, 6cm, Alcohol.Intake - Hepatitis.C - Tobacco
Drivers: CTNNB1

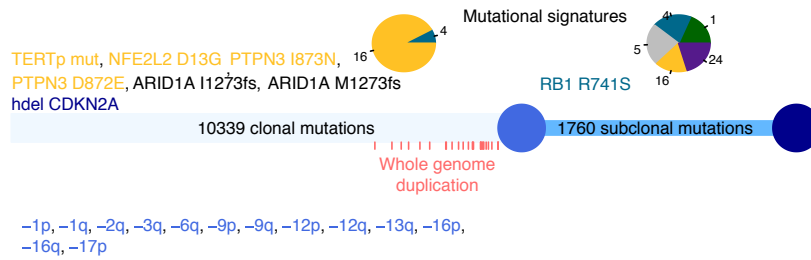


Alcohol

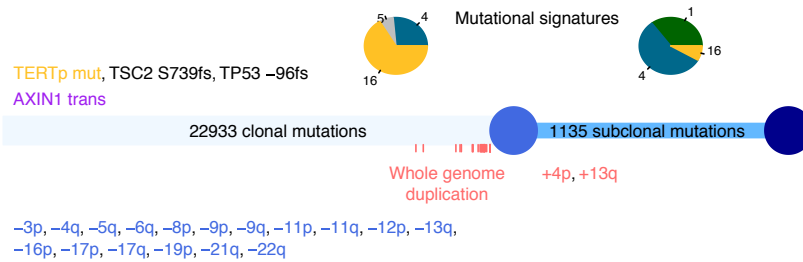
CHC197T, Male, 73yo, Europe
HCC, F2-F3, 13cm, Alcohol.Intake
Drivers: TERT, CTNNB1, MET



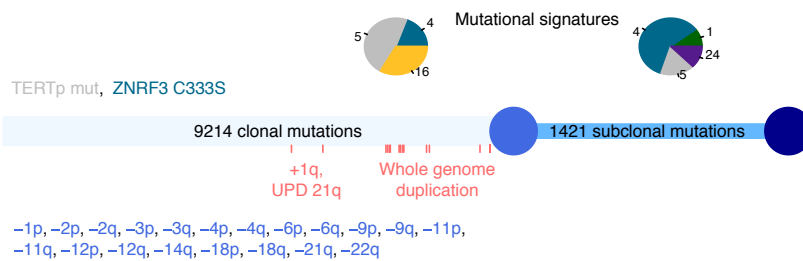
CHC205T, Male, 46yo, Europe
HCC, F0-F1, 10cm, Alcohol.Intake – Tobacco
Drivers: TERT, ARID1A, NFE2L2, CDKN2A, RB1, PTPN3



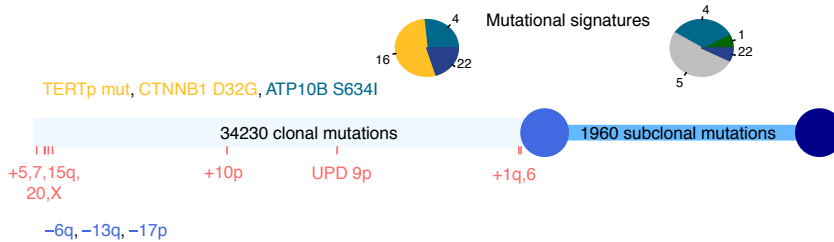
CHC304T, Male, 77yo, Europe
HCC, F0-F1, 18cm, Alcohol.Intake – Tobacco
Drivers: TERT, TP53, AXIN1, TSC2



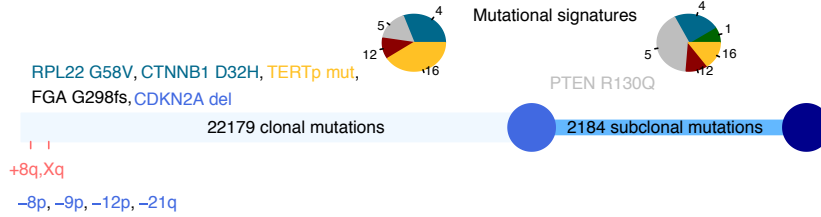
CHC322T, Male, 74yo, Europe
HCC, F4, 4cm, Alcohol.Intake
Drivers: TERT, ZNRF3



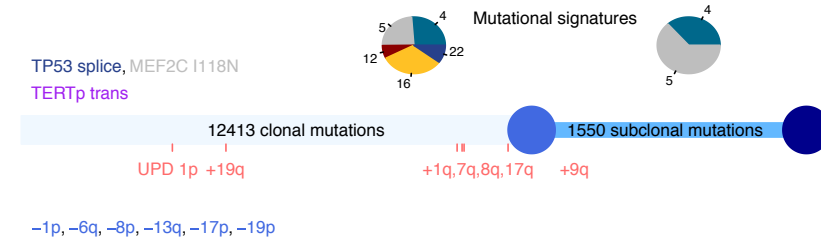
CHC433T, Male, 70yo, Europe
HCC, F0-F1, 18cm, Alcohol.Intake – Metabolic syndrome
Drivers: TERT, CTNNB1, ATP10B



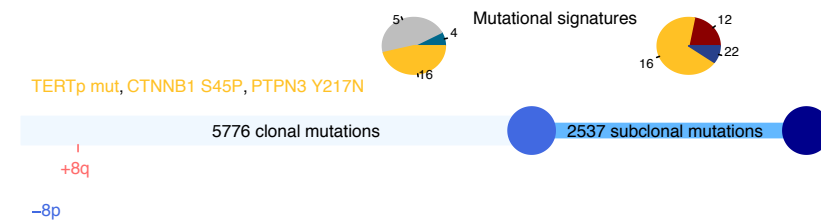
CHC1715T, Male, 72yo, Europe
 HCC, F0-F1, 6cm, Alcohol.Intake – Tobacco
 Drivers: TERT, CTNNB1, RPL22, CDKN2A, FGA, PTEN



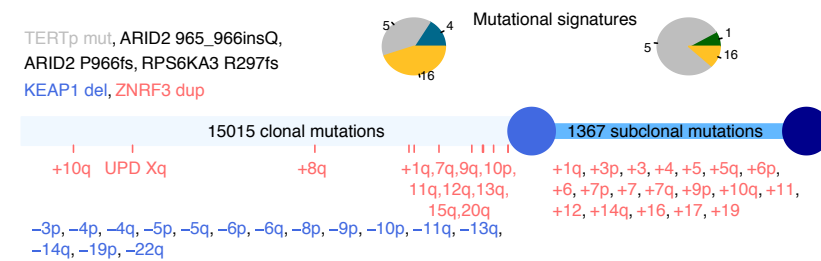
CHC2048T, Male, 65yo, Europe
 HCC, F0-F1, 17cm, Alcohol.Intake
 Drivers: TERT, TP53, MEF2C



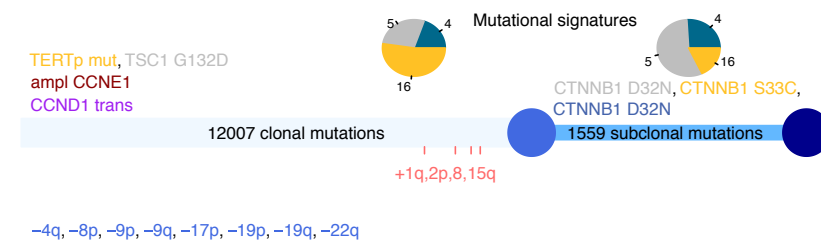
CHC2113T, Male, 61yo, Europe
 HCC, F0-F1, 7cm, Alcohol.Intake
 Drivers: TERT, CTNNB1, PTPN3



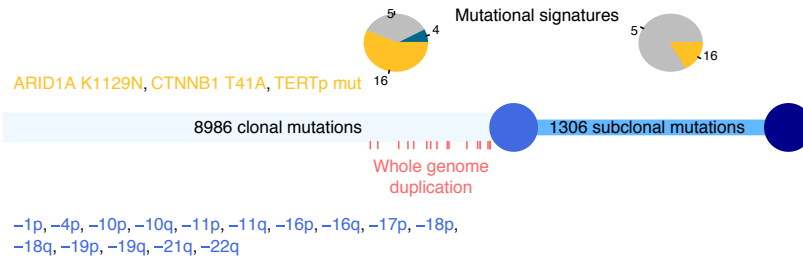
CHC2115T, Male, 74yo, Europe
 HCC, F0-F1, 11cm, Alcohol.Intake – Metabolic.syndrome – Tobacco
 Drivers: TERT, ARID2, RPS6KA3, KEAP1, ZNRF3



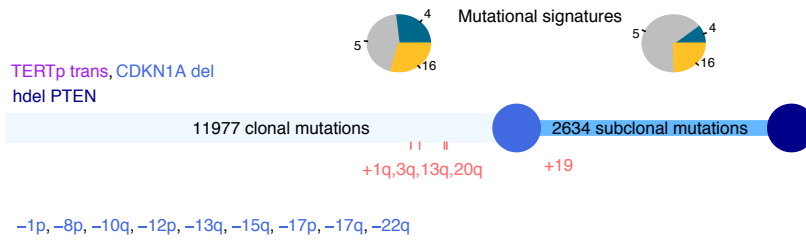
CHC2443T, Male, 74yo, Europe
 HCC, F0-F1, 6.5cm, Alcohol.Intake – Metabolic.syndrome – Tobacco
 Drivers: TERT, CTNNB1, TSC1, CCND1, CCNE1



CHC2691T, Male, 69yo, Europe
HCC, F0-F1, 6cm, Alcohol.Intake – Metabolic.syndrome
Drivers: TERT, CTNNB1, ARID1A

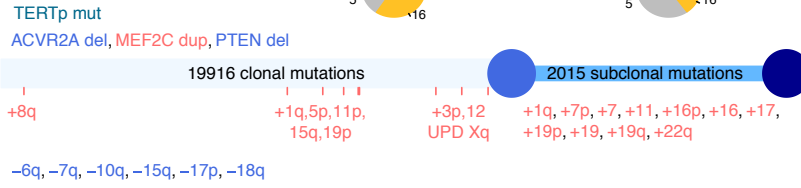


CHC2697T, Male, 64yo, Europe
HCC, F0-F1, 15cm, Alcohol.Intake
Drivers: TERT, CDKN1A, PTEN

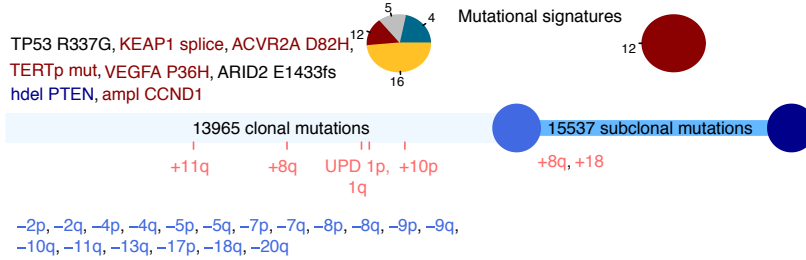


Metabolic Syndrome

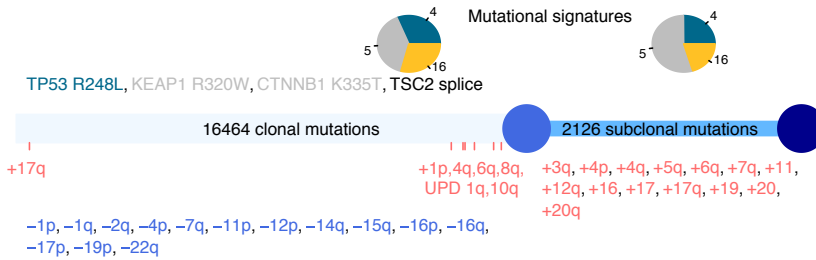
CHC218T, Male, 69yo, Europe
 HCC, F0-F1, 13cm, Metabolic syndrome
 Drivers: TERT, ACVR2A, MEF2C, PTEN



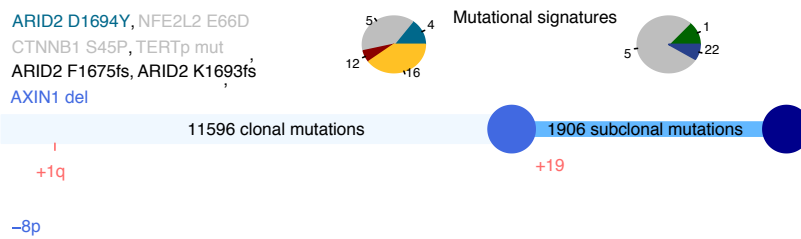
CHC2132T, Male, 57yo, Europe
 HCC, F0-F1, 19cm, Metabolic syndrome - Tobacco
 Drivers: TERT, TP53, ARID2, ACVR2A, KEAP1, PTEN, VEGFA, CCND1



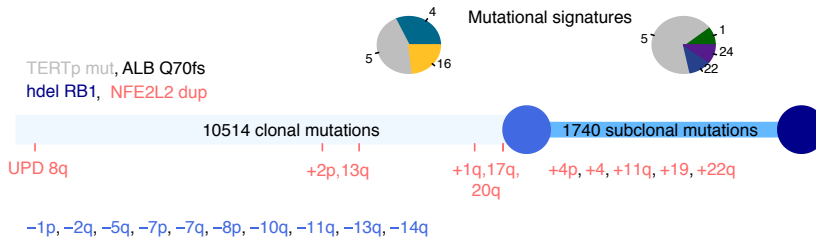
CHC2200T, Male, 69yo, Europe
 HCC, F0-F1, 22cm, Metabolic syndrome - Tobacco
 Drivers: TP53, CTNNB1, KEAP1, TSC2



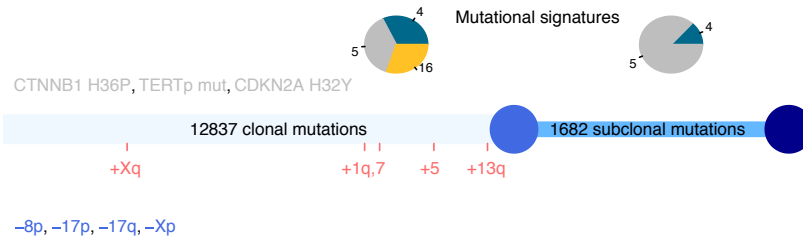
CHC2448T, Male, 82yo, Europe
 HCC, F0-F1, 7.5cm, Metabolic syndrome
 Drivers: TERT, CTNNB1, AXIN1, ARID2, NFE2L2



CHC2449T, Male, 80yo, Europe
 HCC, F0-F1, 9cm, Metabolic syndrome - Diabetes - Tobacco
 Drivers: TERT, ALB, NFE2L2, RB1

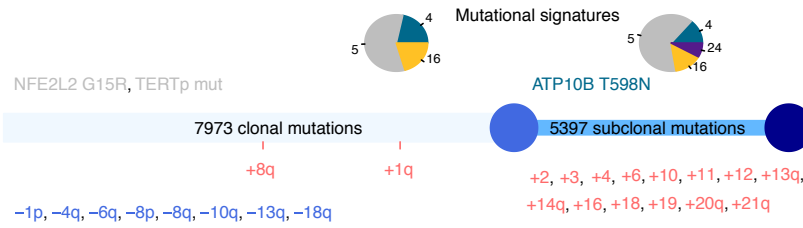


CHC2538T, Female, 76yo, Europe
HCC, F2-F3, 5.5cm, Metabolic syndrome
Drivers: TERT, CTNNB1, CDKN2A

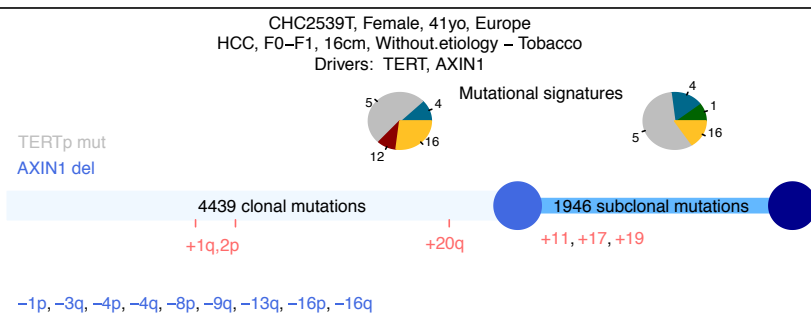
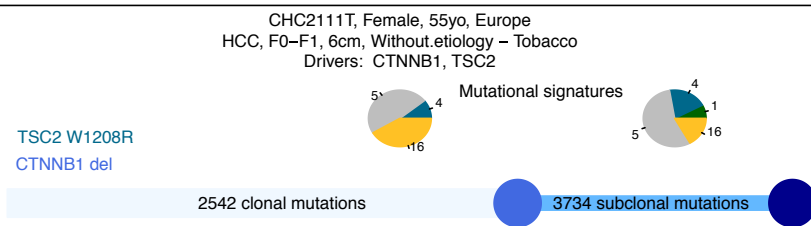
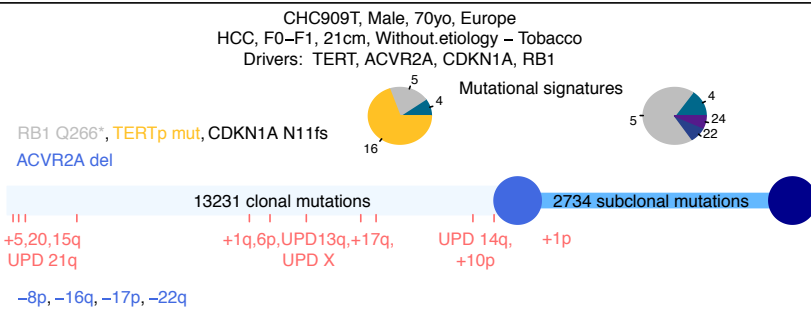
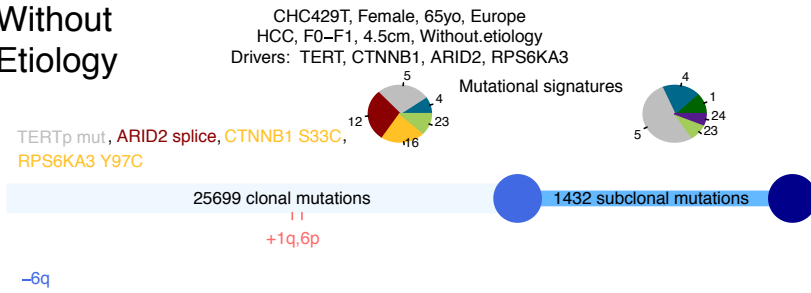


Hemochromatosis

CHC2707T, Male, 78yo, Europe
HCC, F0-F1, 3.5cm, Hemochromatosis - Tobacco
Drivers: TERT, NFE2L2, ATP10B

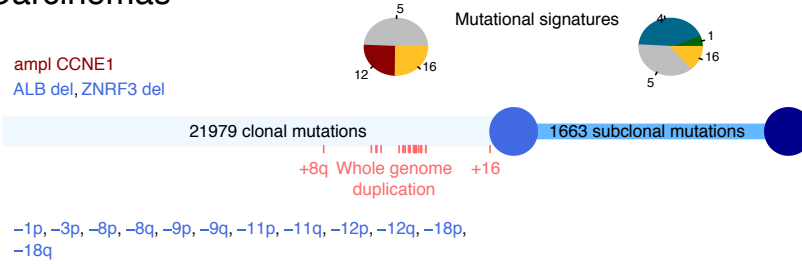


Without Etiology

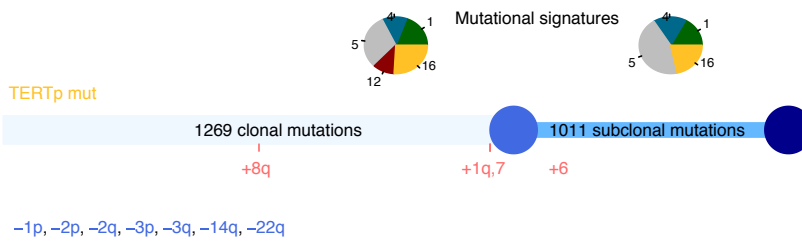


Fibrolamellar Carcinomas

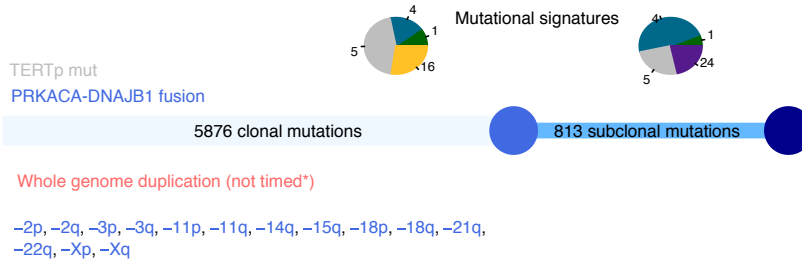
CHC255T, Female, 39yo, Europe
 FLC, F0-F1, 14cm, Without.etiology - Tobacco
 Drivers: ALB, ZNRF3, CCNE1



CHC334T, Female, 24yo, Europe
 FLC, F0-F1, 9cm, Without.etiology
 Drivers: TERT

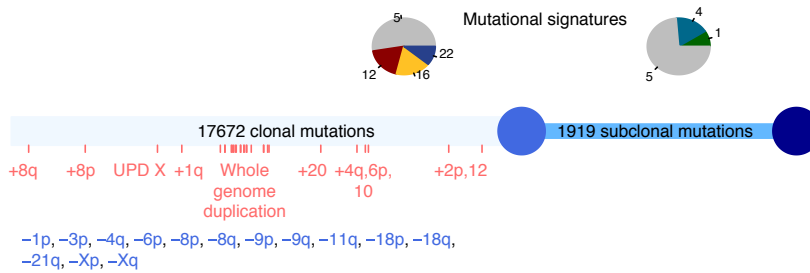


CHC442T, Female, 27yo, Europe
 FLC, F0-F1, 10cm, Without.etiology - Tobacco
 Drivers: TERT

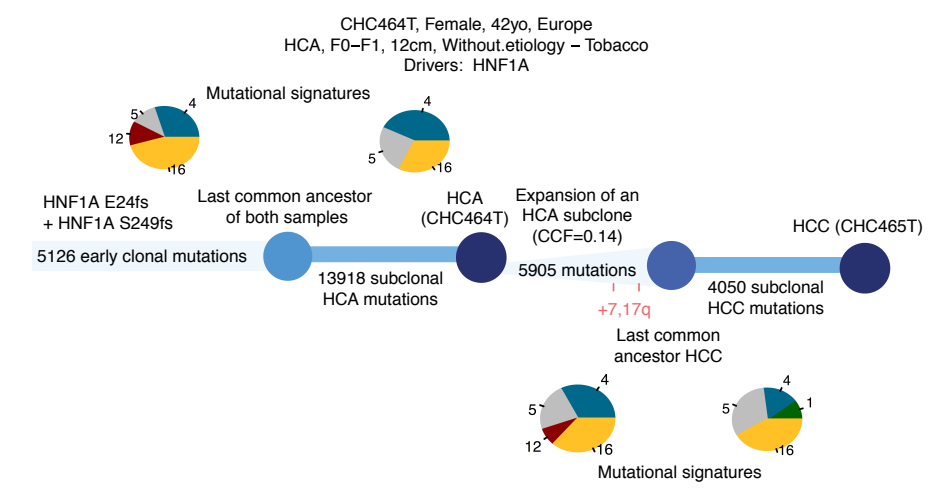
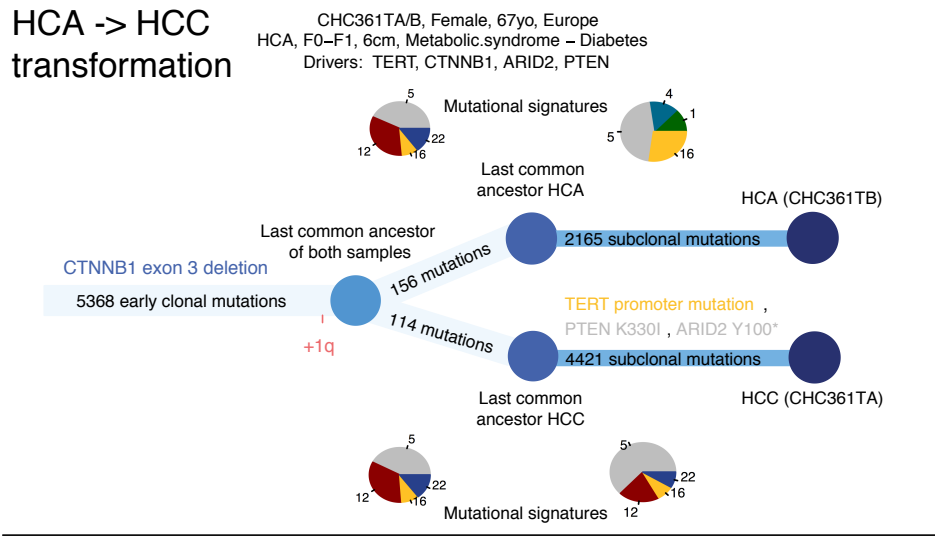


* This tumor was too contaminated to distinguish duplicated from non-duplicated somatic mutations.

CHC906T, Female, 50yo, Europe
 FLC, F0-F1, 8cm, Without.etiology

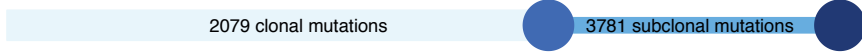
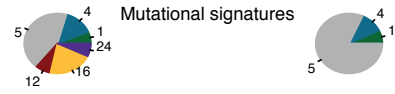


HCA -> HCC transformation

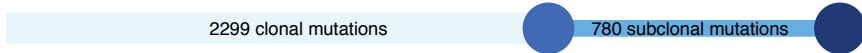
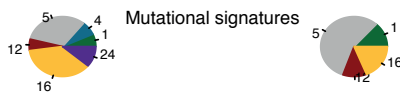


HCA

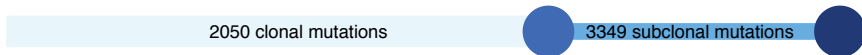
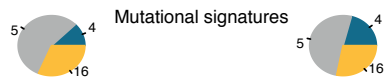
CHC605T, Female, 47yo, Europe
 HCA, F0-F1, 6cm, Metabolic syndrome – Diabetes
 Drivers:



CHC2432T, Female, 43yo, Europe
 HCA, F0-F1, 1.5cm, Without etiology
 Drivers:



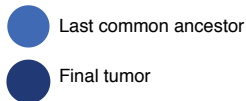
CHC2446T, Female, 45yo, Europe
 HCA, F0-F1, 5cm, Without etiology – Tobacco
 Drivers:



-6p

Legend

Tumor progression tree



Clonal alterations

Subclonal alterations

Mutational signatures



Copy-number and structural variations (SVs):

Deletions, Gains, Translocations