

Supplementary materials

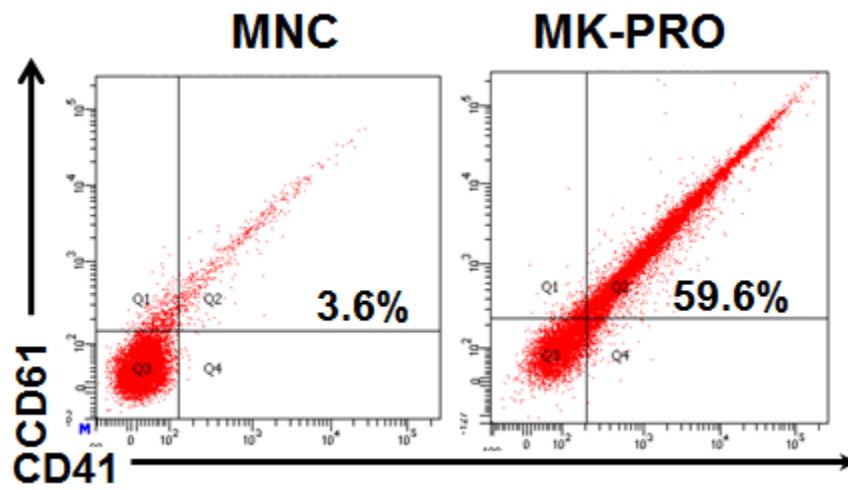


Figure S1. Representative flow cytometric plots of human umbilical cord blood and the MK progenitors after 10 days culture.

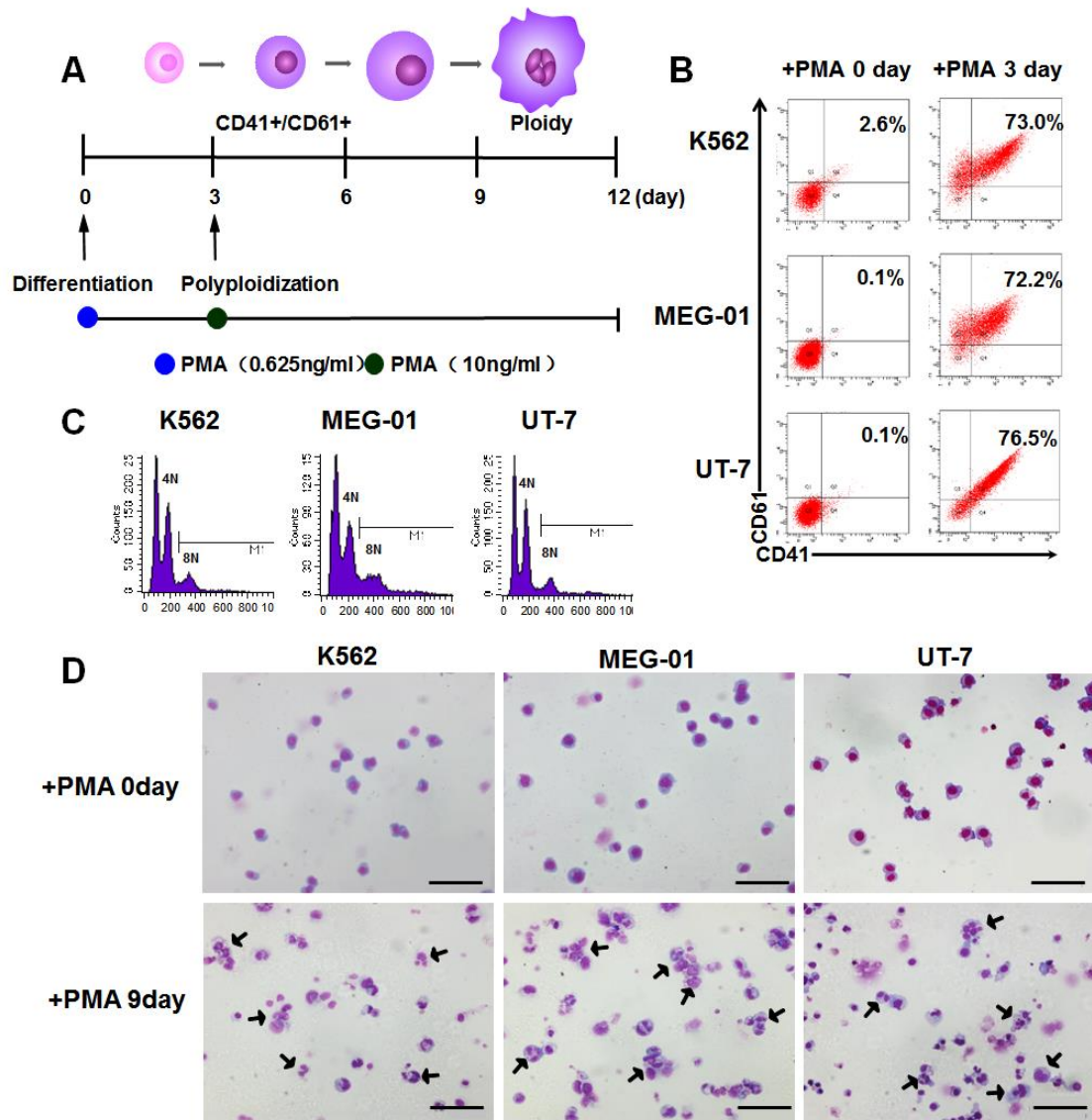


Figure S2. Optimization of the culture method for megakaryocyte polyploidization in leukemic cell lines.

(A) Schematic protocols of step-wise polyploidization induction in cell lines with PMA.

(B) The proportion of CD41⁺/CD61⁺ cells in K562, MEG-01 and UT-7 cells before and

after induction. (C) DNA ploidy analysis by flow cytometry in K562, MEG-01 and UT-

7 cells. (D) Morphology of three kinds of cells before and after PMA treatment. Cells

were stained with Wright-Giemsa solutions. (Scale bars: 100 μ m)

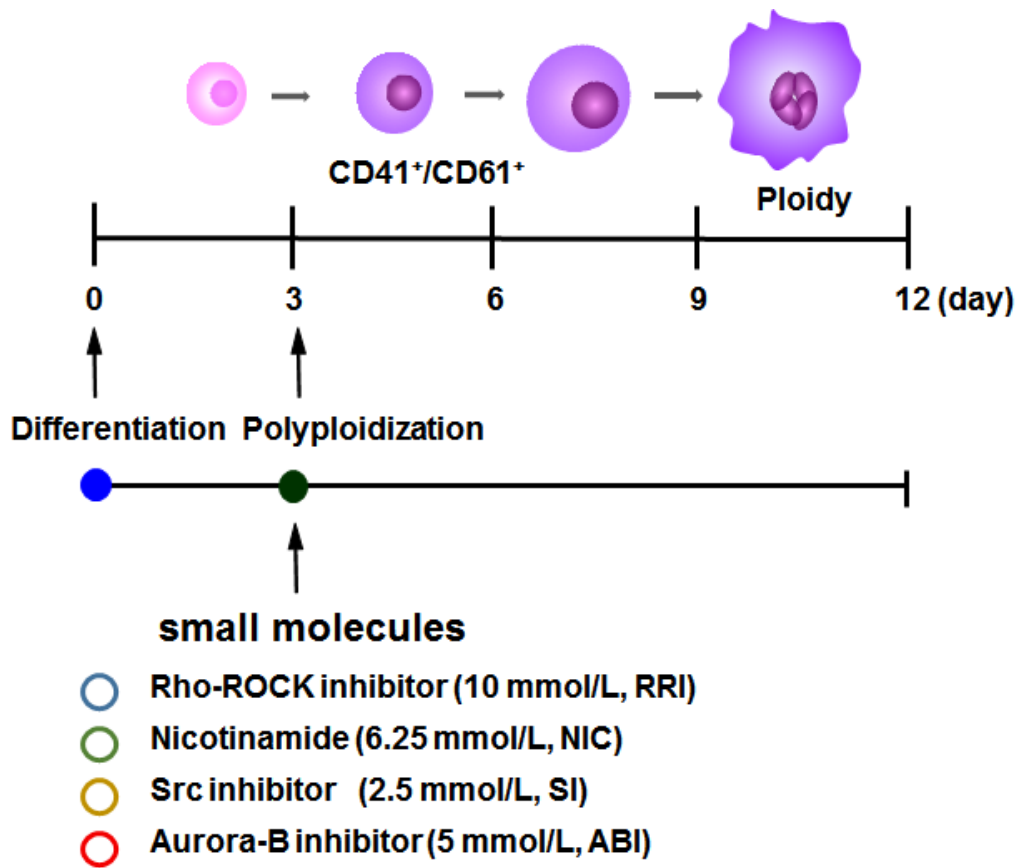


Figure S3. Schematic protocols of step-wise polyploidization induction in cell lines with different small molecules addition.