

Supplementary information, Figure S7

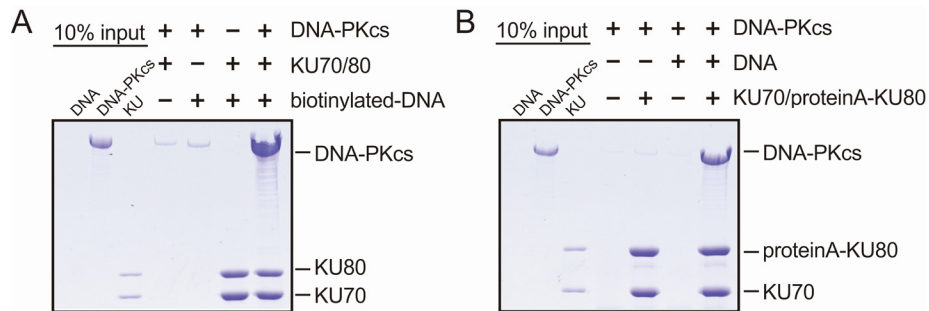


Figure S7 Interaction between DNA-PKcs, KU70/80 and DNA. (A) *In vitro* pull-down assay for DNA-PKcs, KU70/80 and DNA-PK complex. Biotinylated DNA was incubated with protein or protein complexes and the mixture was applied to streptavidin beads. The bound proteins were subjected to SDS-PAGE and visualized by coomassie brilliant blue staining. (B) *In vitro* pull-down assay for DNA-PKcs, KU70/proteinA-KU80 and DNA. DNA-PKcs was incubated with KU70/proteinA-KU80 in the presence or absence of DNA. The mixture was applied to IgG beads. The bound proteins were detected as in A.