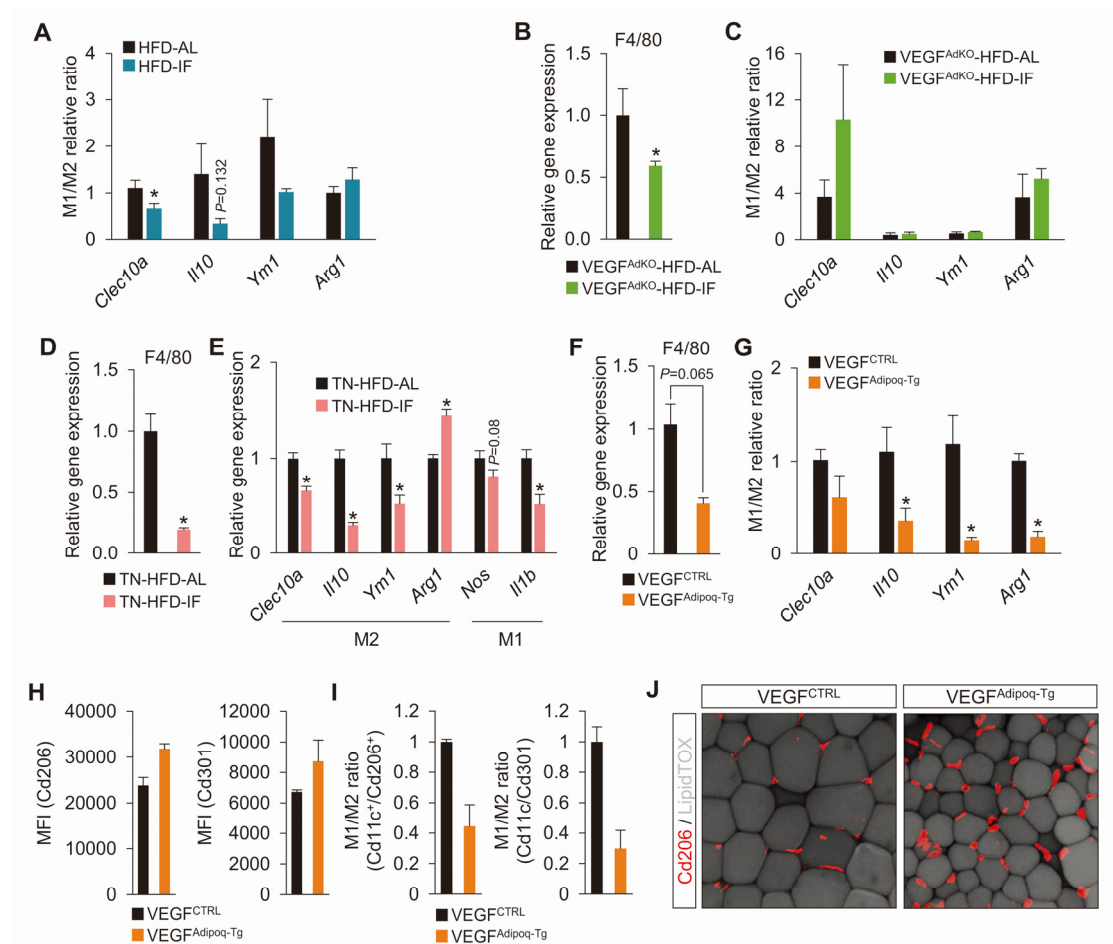


## Supplementary information, Figure S10



**Figure S10 IF and adipose-VEGF overexpression induces alternative activation of macrophages.** (A) M1/M2 macrophage ratio in HFD-AL and -IF mice. It was calculated by *Nos* gene expression as numerator and 4 different M2 markers as denominators. (B) Gene expression of pan-macrophage marker, F4/80 in VEGF<sup>AdKO</sup>-HFD-AL and -IF mice. (C) M1/M2 macrophage ratio in VEGF<sup>AdKO</sup>-HFD-AL and -IF mice. (D) F4/80 gene expression in TN-HFD-AL and -IF mice. (E) M1/M2 macrophage marker gene expression analysis in TN-HFD-AL and -IF mice. (F) F4/80 gene expression in VEGF<sup>Adipoq-Tg</sup> mice. (G) M1/M2 macrophage ratio in VEGF<sup>Adipoq-Tg</sup> mice. (H) Quantification of M2 macrophages in VEGF<sup>Adipoq-Tg</sup> mice using mean fluorescent

intensity (MFI) of Cd206- and Cd301-positive F4/80<sup>+</sup>Cd11b<sup>+</sup> macrophages. **(I)** M1/M2 macrophage ratio in VEGF<sup>Adipoq-Tg</sup> mice using Cd11c<sup>+</sup>/Cd206<sup>+</sup> and Cd11c<sup>+</sup>/Cd301<sup>+</sup> macrophage number ratio. **(J)** Representative images of M2 marker Cd206-stained cells in whole-mount PWAT of VEGF<sup>Adipoq-Tg</sup> mice. Values are mean ± SEM; two-tailed unpaired Student's *t*-test; \**P* < 0.05 vs. HFD-AL, VEGF<sup>AdKO</sup>-HFD-AL, TN-HFD-AL or VEGF<sup>CTRL</sup> mice.