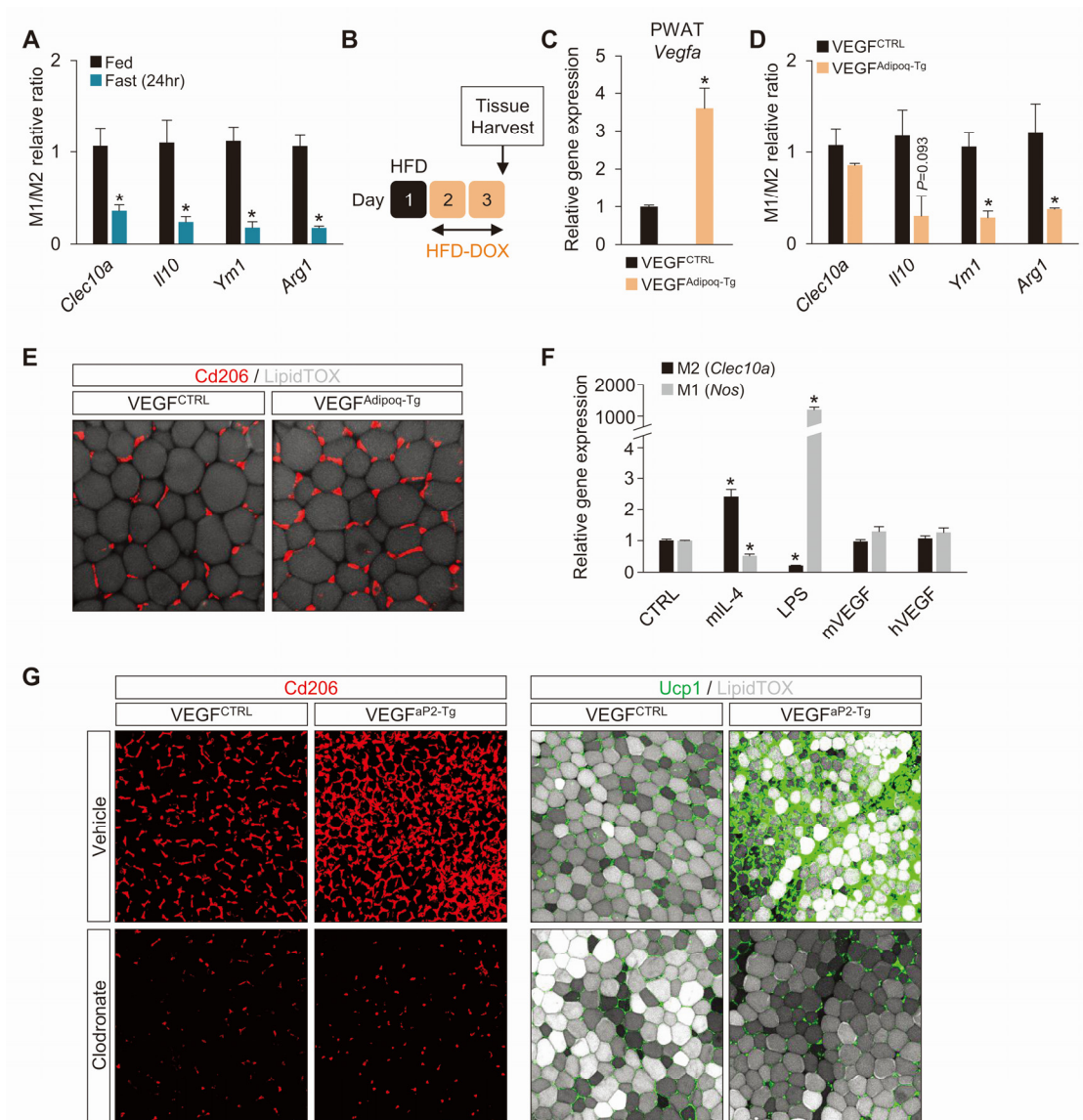


## Supplementary information, Figure S11



**Figure S11 24-h fasting and acute adipose-VEGF induction lead to alternative activation of adipose macrophages. (A)** M1/M2 macrophage ratio at feeding and 24 h fasting. **(B)** A schematic illustration of experimental schedule for acute adipose-VEGF induction by subjecting VEGF<sup>Adipoq-Tg</sup> mice to HFD-DOX diet for 48 h. **(C)** *Vegfa* mRNA expression in PWAT of VEGF<sup>Adipoq-Tg</sup> mice after acute adipose-VEGF overexpression. **(D)** M1/M2 macrophage ratio in VEGF<sup>Adipoq-Tg</sup> mice. **(E)**

Representative images of M2 marker Cd206-stained cells in whole-mount PWAT of VEGF<sup>Adipoq-Tg</sup> mice after acute induction. **(F)** M1 (*Nos*) and M2 (*Clec10a*) gene expression in Raw264.7 macrophage cells after treatments of mouse IL-4 (10 ng/mL), LPS (100 ng/mL), mouse VEGF (100 ng/mL) and human VEGF (50 ng/mL) for 12 h. **(G)** Representative images of M2 macrophages and Ucp1 expression in WAT after acute adipose-VEGF upregulation in VEGF<sup>ap2-Tg</sup> mice with treatments of vehicle or clodronate. \**P* < 0.05 vs. Fed, VEGF<sup>CTRL</sup> mice or CTRL.