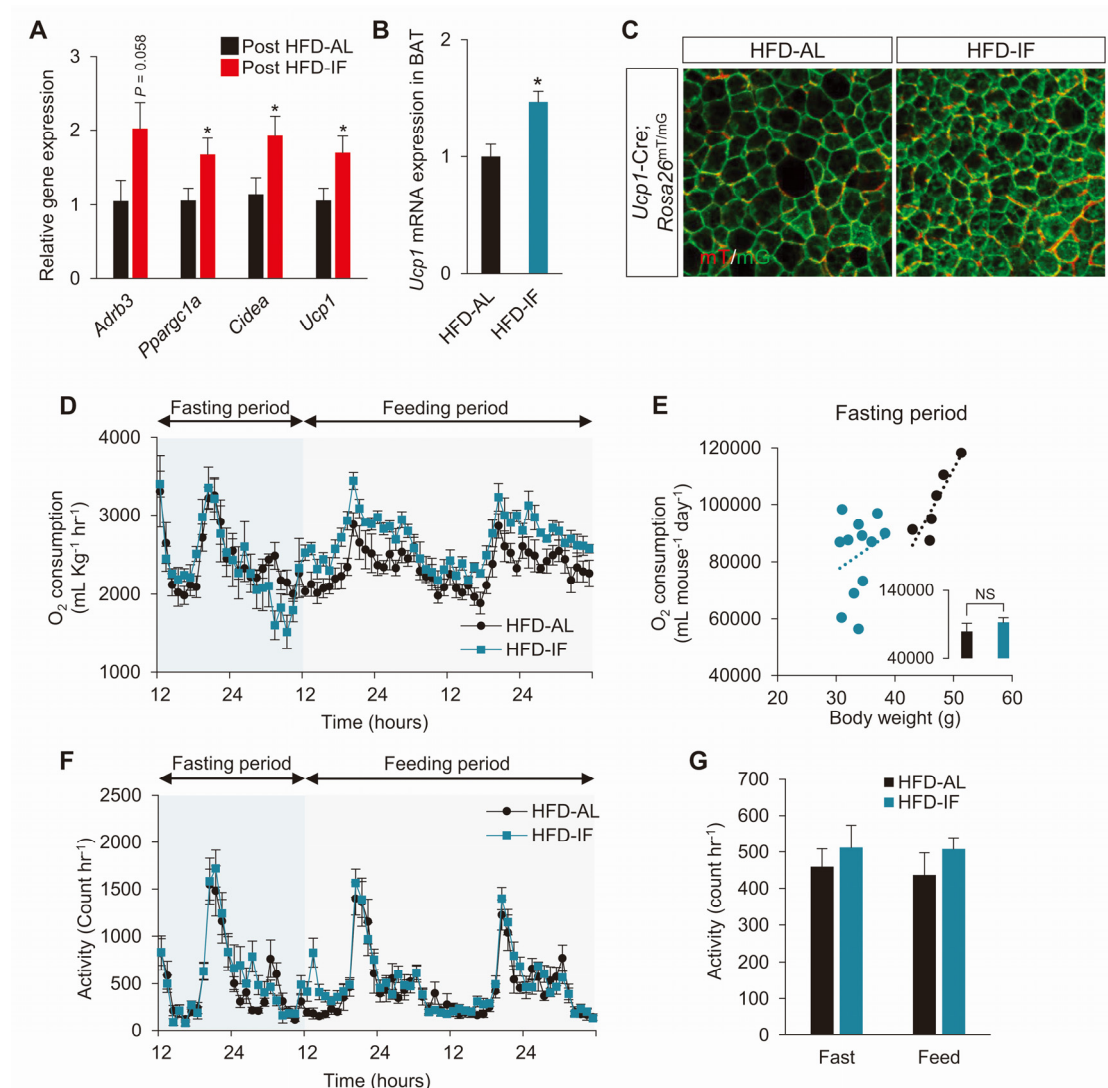


## Supplementary information, Figure S5



**Figure S5 IF induces adipose thermogenic activity without affecting physiological activity.** (A) Gene expression analysis on WAT browning markers in Post-HFD-IF mice compared to Post-HFD-AL mice. (B) Increased *Ucp1* expression in BAT of HFD-IF mice compared to HFD-AL mice. (C) Representative images of whole-mount BAT of brown/beige chaser (*Ucp1-Cre Rosa26<sup>mT/mG</sup>*) mice subjected to AL and IF under HFD feeding. GFP<sup>+</sup> cells indicate brown adipocytes in BAT. (D) Traces of O<sub>2</sub> consumption normalized with body weight during one IF cycle (i.e., 2 day feeding-1 day fasting). (E)

Linear regression analysis of O<sub>2</sub> consumption as a function of body weight during fasting period indicates no difference in energy expenditure between HFD-AL and HFD-IF. An inset graph shows O<sub>2</sub> consumption during fasting condition, adjusted with body weight at 38.54 g using ANCOVA (HFD, AL/IF: n = 6/12). N.S., not significant.

**(F)** Traces of physical activities of HFD-AL and HFD-IF mice during one IF cycle. **(G)**

Average of physical activities per hour during fasting and feeding periods. Data are mean ± SEM; two-tailed unpaired Student's *t*-test; \*, *P* < 0.05 vs. Post HFD-AL or HFD-AL.