

## Supporting Information

### **Bioorthogonal Labeling of Human Prostate Cancer Tissue Slice Cultures for Glycoproteomics**

*David R. Spiciarich, Rosalie Nolley, Sophia L. Maund, Sean C. Purcell, Jason Herschel, Anthony T. Iavarone, Donna M. Peehl, and Carolyn R. Bertozzi\**

anie\_201701424\_sm\_miscellaneous\_information.pdf

## Supporting Information:

### Methods and Materials.

**General reagents.** All chemical and biological reagents were of analytical or cell culture grade, obtained from commercial sources, and used without further purification unless otherwise noted. Ac<sub>4</sub>ManNAz, Ac<sub>4</sub>ManNAI and Ac<sub>4</sub>ManNAc were synthesized as previously described.<sup>[1,2]</sup>

**Metabolic labeling of tissue slice cultures.** Tissue slices from healthy and cancerous prostate tissue were obtained with approval from internal review boards from Stanford University (IRB ID13895) and the University of California, Berkeley for use of material from human subjects. Eight-mm diameter cores of normal and cancerous tissue were taken from radical prostatectomy specimens according to needle biopsy maps and gross analysis. Using an automated Krumdieck microtome, the cores were cut into 300 µm thick slices. Slices from the cored section were evaluated by hematoxylin and eosin (H&E) staining to verify the histology of the slices neighboring those used for metabolic labeling. The slices were cultured on titanium screens in 6-well culture plates containing 2.5 mL of supplemented PFMR-4A medium with 50 nM R1881<sup>21</sup> and 50 µM of monosaccharide (Ac<sub>4</sub>ManNAc, Ac<sub>4</sub>ManNAz, or Ac<sub>4</sub>ManNAI). The plates were set on a rotating platform at a 30 degree angle in a standard tissue culture incubator. The angled rotation at 1 rpm allowed intermittent submersion of the tissue slices in the medium, permitting optimal nutrient and gas diffusion throughout the tissue. Each day, the conditioned media were removed and stored at -80 °C and replaced with fresh media. After 3 days, the media were removed and the slices were washed with phosphate buffered saline (PBS) prior to being snap-frozen in liquid nitrogen.

**Preparation of prostate tissue whole cell lysates.** Prostate tissue slice cultures were lysed in 1 mL of lysis buffer containing 1% Triton X-100, 20 mM Tris pH 7.4, 300 mM NaCl, and protease inhibitors (inhibitor cocktail III from Calbiochem). While the tissue was cooled on ice, pulverization was performed using a Tissue Tearor (Biospec Products model #780CL-04) on setting 2, with cycles of 20 sec on followed by 20 sec off, 2 min total time. Samples underwent sonication for 1 min total time with cycles of 10 sec on and 10 sec off at 2.0 V setting. Cell surface glycoproteins were collected in the supernatant after centrifugation at 10,000 rpm for 10 min at 4 °C. The supernatant was collected and a bicinchoninic acid (BCA) assay (Thermo Fisher Scientific) was performed to determine protein concentration.

**Labeling glycoproteins by biotin-alkyne or biotin-azide via copper (I) catalyzed azide-alkyne [3+2] cycloaddition (CuAAC) reaction.** Lysate was reacted in the presence of 1 mM CuSO<sub>4</sub>, 5 mM freshly prepared sodium ascorbate and 100 mM tris[(1-benzyl-1H-1,2,3-triazol-4-yl)methyl]amine (TBTA) (Sigma-Aldrich) and 25 mM biotin probe (Invitrogen Life Sciences). Samples were rotated for 1 hour at RT. The reaction was quenched with 10 mM ethylenediaminetetraacetic acid (EDTA).

**Immunoblotting.** Following preparation and protein concentration normalization by BCA assay, samples were separated by standard SDS-PAGE (Bio-Rad, Criterion system), transferred onto nitrocellulose, blocked in 5% bovine serum albumin (Sigma) in PBS with

0.1% Tween-20, and analyzed by standard enhanced chemiluminescence immunoblotting methods (Pierce). Monoclonal mouse anti-biotin HRP reagent (Jackson ImmnoResearch product #200-032-211) was diluted 1:100,000 in blocking buffer.

**Cell surface glycoprotein capture and MS analysis.** Triton X-100 stock solution diluted to 10% in PBS was added to TSC lysate for 1% final concentration and samples were rotated for 1 h at RT. Samples were then filtered through a PD-10 desalting column (GE Healthcare Life Sciences) and eluted with 3.5 mL PBS. SDS (10%) was added for final concentration of 0.5% SDS and samples were boiled at 90 °C for 8 min. Samples were cooled on ice for 5 min and an additional 8.5 mL of PBS and 100 µL of avidin slurry (Sigma, CAS: 1405-69-2) were added and rotated at RT for 1 h. Beads were concentrated by centrifugation at 1,400 rpm, 3 min at 4 °C, supernatant was removed and beads were transferred to a washed biospin column (Bio Rad Life Sciences) on a vacuum manifold. Beads were washed twice with 1 mL PBS, once with 1 mL 0.2% SDS/PBS, once with 1 mL fresh 6 M urea and twice with 1 mL PBS. Freshly prepared 6 M urea (400 µL) and 20 µL 100 mM tris(2-carboxyethyl)phosphine (TCEP) was delivered and sample was rotated for 30 min at RT. Freshly prepared 20 mL of 200 µM iodoacetamide was delivered and the sample was wrapped in foil and rotated for 30 min at RT. Beads were then washed 3 times with 1 mL of PBS and transferred to an RNase-free microcentrifuge tube with 2 washes of 300 µL PBS. Beads were concentrated by centrifugation at 6000 rpm, 3 min and supernatant was removed. Freshly made 2 M urea (200 µL) was added and trypsin digestion (Promega Corporation, # V511) was performed overnight in a bench top shaker at 37 °C. The next morning, the beads were pelleted at 6,000 rpm for 3 min. The supernatant was collected and the beads washed with an additional 100 µL of PBS. LC-MS grade formic acid (16 mL) was added and the resulting peptide mixtures were solid-phase extracted with SPEC PT C18 tips (Agilent, #A57203) according to the manufacturer's instructions and stored at -80°C.

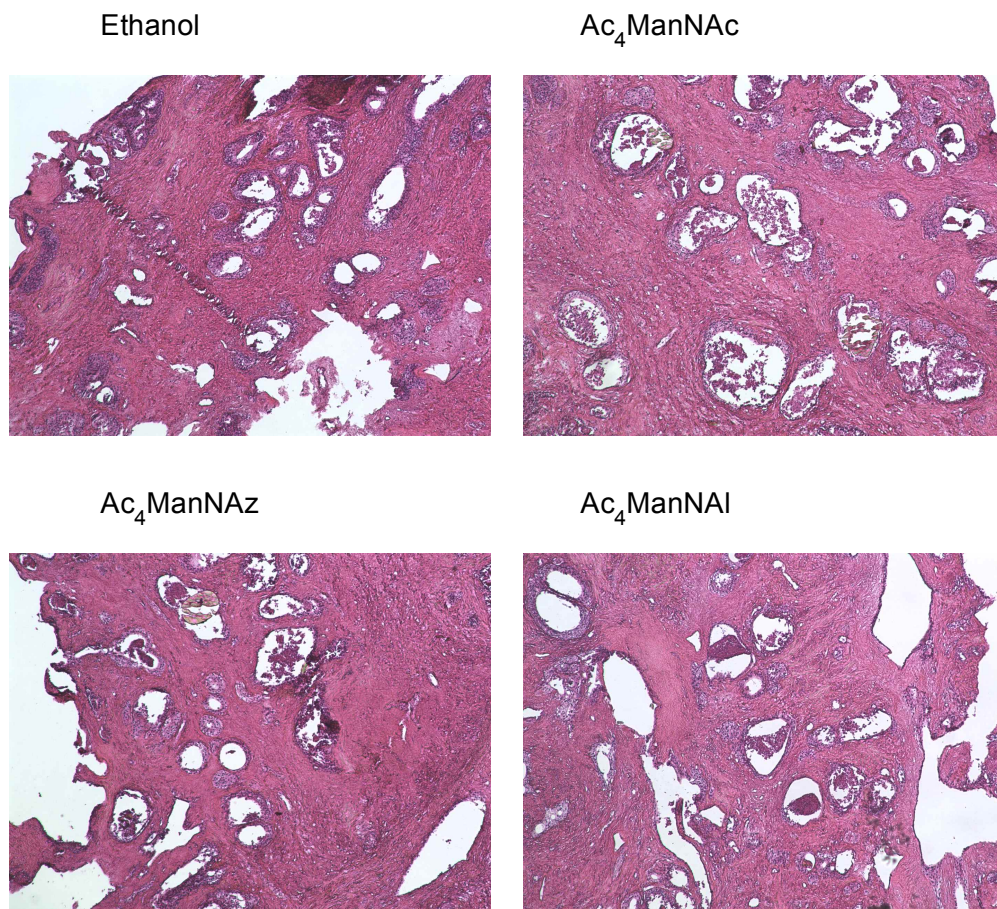
**Mass Spectrometry (MS).** Released peptides were analyzed by reversed-phase nanoflow liquid chromatography coupled (Thermo Dionex UltiMate3000 RSLC) that was connected in-line with a 15 cm C18 column (Thermo, PM100) to a Thermo LTQ Orbitrap XL mass spectrometer equipped with a nanoelectrospray ionization (nanoESI) source. Full-scan mass spectra were acquired in the positive-ion mode over the range  $m/z = 400-2,000$  using the Orbitrap mass analyzer, in profile format, with a mass resolution setting of 60,000. In the data-dependent mode, the eight most intense ions exceeding an intensity threshold of 50,000 counts were selected from each full-scan mass spectrum for tandem mass spectrometry (MS/MS, i.e., MS2) analysis using collision-induced dissociation (CID). MS2 spectra were acquired using the linear ion trap or the Orbitrap analyzer in centroid format. Data acquisition was controlled using Xcalibur software (version 2.0.7, Thermo). The raw data are available upon request.

**Data Analysis.** LC-MS/MS data was searched using the SequestHT searching algorithm in the Proteome Discover 1.4 software against the human-specific SwissProt-reviewed database downloaded 18 July 2014 with a 1% false discovery rate (FDR).

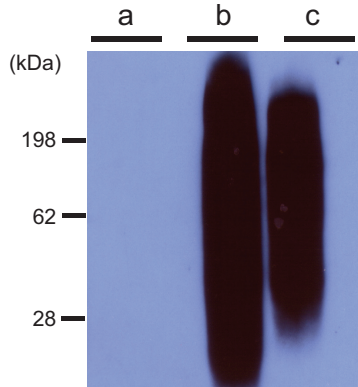
**Prostate adenocarcinoma tissue slice fluorescence microscopy.** Frozen prostate TSCs were placed on slides mounted with 4-tissue culture wells and allowed to thaw for 10 min. Tissue slices were then washed with DPBS + 1% FBS (2 x 0.8 mL), followed by incubation with or without DIBAC-647 (25 µM) in DMEM media for 1 h at 4 °C. Tissues slices were subsequently washed with DPBS + 1% FBS (10 x 0.8 mL) and fixed with 4%

paraformaldehyde in PBS (0.4 mL) for 5 min at 4 °C and 20 min at rt and washed with DPBS (4 x 0.4 mL). To demonstrate azide labeling was cell surface-specific, fixed TSCs were blocked in 10% BSA for 1 h and then incubated with CD47 (1:1000, abcam #ab3283) for 1 h RT. TSCs were washed (3 x 0.8 mL) and CD47-labeled proteins were visualized with goat anti-mouse conjugated with Alexa Fluor 488 (1:1000, Abcam #ab150113) for 1 h RT. The tissue slices were washed with DPBS (3 x 0.8 mL) and transferred to a concave microscope slide. DAPI mounting solution (~20  $\mu$ L) was delivered and a glass coverslip was used to seal the slide, and the tissue slices were imaged.

## II. Supplementary Figures



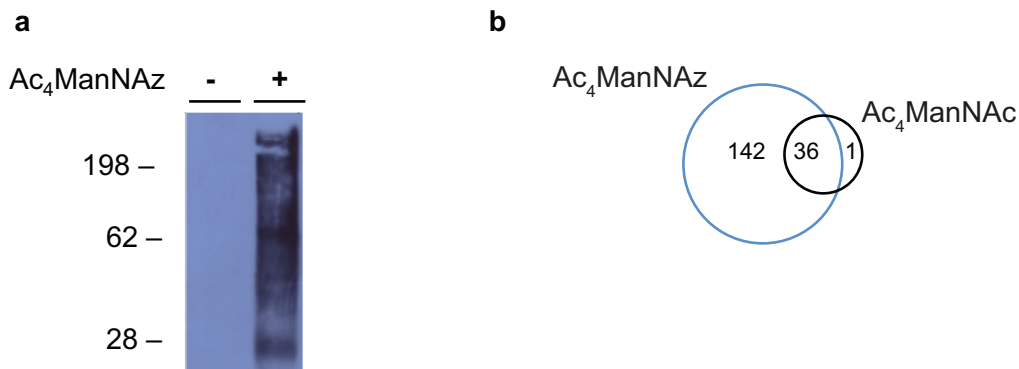
**SI Figure S1.** Histological of prostate tissue slice cultures (TSCs) by hematoxylin and eosin (H&E) staining. TSCs incubated with either ethanol, Ac<sub>4</sub>ManNAc, Ac<sub>4</sub>ManNAz or Ac<sub>4</sub>ManNAI.



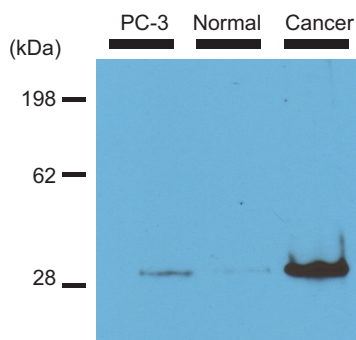
**SI Figure S2.** Western blot analysis of human prostate TSCs lysate administered Ac<sub>4</sub>ManNAc, Ac<sub>4</sub>ManNAz, or Ac<sub>4</sub>ManNAI. (a) Ac<sub>4</sub>ManNAc and (b) Ac<sub>4</sub>ManNAz reacted with biotin-alkyne under copper-catalyzed azide-alkyne [3+2] cycloaddition (CuAAAC) and (c) Ac<sub>4</sub>ManNAI reacted with biotin-azide under CuAAC conditions. Strong azide and alkyne labeling was observed. Equal protein was loaded as calculated by bicinchoninic acid (BCA) assay.

**SI Table S1.** Proteins enriched in cancer (n=8) versus normal (n=8) prostate tissue datasets.

Gene Name	Protein Name	Fold [CA/N]
C4B	Complement C4-B	48
C4A	Complement C4-A	24.7
DPP2	Dipeptidyl peptidase 2	23.0
VDAC	Voltage-dependent anion-selective channel protein 1	22.5
RAB1C	Putative Ras-related protein Rab-1C	18.0
K1324	Estrogen-induced gene 121	18.0
EZRI	Ezrin	17.0
APOE	Apolipoprotein E	10.0
PTPR	Receptor-type tyrosine-protein phosphatase kappa	9.0
GDF15	Growth/differentiation factor 15	8.3
NUCB1	Nucleobindin-1	7.0
VAPA	Plasmalemma vesicle-associated protein	7.0
TRY3	Trypsin-3	7.0
FOLH	Glutamate carboxypeptidase 2	6.5
DRA	HLA class II histocompatibility antigen	6.0
ATPA	ATP synthase subunit alpha	5.4
CATB	Cathepsin B	5.0
GLCM	Glucosylceramidase	5.0
T179	Transmembrane protein 179B	5.0
AMPN	Aminopeptidase N (CD13)	4.8
ENPL	Endoplasmic (Tumor rejection antigen 1)	4.6
CERU	Ceruloplasmin	4.5
GGT3	Putative $\gamma$ -glutamyltranspeptidase 3	4.3
PPAP	Prostatic acid phosphatase	4.1



**SI Figure S3:** Labeled glycoproteins from conditioned media administered  $Ac_4ManNAz$  or  $Ac_4ManNAc$ . (a) The conditioned media from prostate TSC incubated with  $Ac_4ManNAz$  or  $Ac_4ManNAc$  was collected and purified to remove excess sugar. Samples were treated with biotin-alkyne probe and analyzed by Western blot using an HRP-conjugated anti-biotin antibody. Strong azide labeling was observed over background. (b) Proteomic analysis revealed azide-dependent labeling.



**SI Figure 4.** Voltage-dependent anion-selective channel 1 (encoded by the gene *VDAC1*) is overexpressed in human prostate cancer tissue. Lysate from normal and cancer human prostate TSCs and a prostate cell line, PC-3, lysate was probed with a  $\alpha$ -VDAC1 mAB. Equal protein was loaded as calculated by BCA assay.

## References

- [1] Laughlin, S. T.; Bertozzi, C. R. *Nat. Protocols* 2007, 2, 2930–2944.  
 [2] Chang, P.V.; Chen, X.; Smyrniotis, C.; Xenakis, A.; Hu, T.; Bertozzi, C.R.; Wu, P.; *Angew. Chem. Int. Ed.* 2009, 48, 4030-4033

**SI Table S2.** Proteomic dataset of proteins found in normal and cancer prostate tissue slice cultures (TSCs). Proteins found in prostate cancer (c1-8) and normal (n1-8) proteomic dataset. Columns include uniprot accession numbers (ACCN), gene names, protein names, Swiss-Prot databank annotations of glycosylation. The total number of identified peptide sequences (peptide spectrum matches) for the protein, including those redundantly identified.

ACCN	Gene Name	Protein Name	Annotated Glycosylated	N1	N2	N3	N4	N5	N6	N7	N8	C1	C2	C3	C4	C5	C6	C7	C8
P35749	MYH11	Myosin-11		24	13	41	36	37	31	22	85	13	14	12	13	28	42	66	56
P12111	COL6A3	Collagen alpha-3	N-linked, O-linked	11	6	35	28	23	21	2	102	4	8	3	11	5	28	40	67
P13645	KRT10	Keratin, type I cytoskeletal 10		15	14	23	19	10	1	27	42	16	14	12	13	17	42	45	38
P04264	KRT1	Keratin, type II cytoskeletal 1		15	12	23	14	11	8	30	35	25	15	14	13	15	41	45	37
P21333	FLNA	Filamin-A		18	4	20	16	27	4	11	16		18	9	9	19	5	6	57
P35908	KRT2	Keratin, type II cytoskeletal 2 epidermal		9	14	19	11	10	4	25	20	16	8	8	11	9	24	31	26
Q7Z5K2	WAPL	Wings apart-like protein homolog		22	2	35	11	29				25	28	27	3	20			
P05556	ITGB1	Integrin beta-1	N-linked	10	7	11	15	9	9	14	22	11	11	13	8	10	24	26	22
P18206	VCL	Vinculin		7	7	24	7	21	11	7	9		8	6	17	14	4	1	45
P35527	KRT9	Keratin, type I cytoskeletal 9		9	3	13	5	8	3	14	35	19	11	13	4	11	25	30	31
P01011	SERPINA3	Alpha-1-antichymotrypsin	N-linked	12	12	5	6	6	7	17	15	15	8	11	17	21	36	48	12
P17301	ITGA2	Integrin alpha-2	N-linked	10	8	11	10	7	11	7	15	3	8	9	6	4	18	21	12
P17661	DES	Desmin		2	1	10	7	12	9	7	29	4	6	2	3	7	12	11	19
P24821	TNC	Tenascin	N-linked	8	12	10	8	8	7	6	17	2	1	2	6	7	21	19	4
P06756	ITGAV	Integrin alpha-V	N-linked	7	10	10	10	7	10	9	10	2	6	7	8	12	14	16	9
P51884	LUM	Lumican	N-linked	9	6	8	9	4	5	8	22	2	9	9	6	8	8	10	22
Q01995	TAGLN	Transgelin		7	5	9	6	6	6	19	10	4	9	10	6	7	16	18	22
P63267	ACTG2	Actin, gamma-enteric smooth muscle		8	5	8	6	7	4	5	24		5	5	5	5			31
P08195	SLC3A2	4F2 cell-surface antigen heavy chain	N-linked	7	9	7	7	5	7	11	13	2	5	6	6	6	23	26	27
P07093	SERPINE2	Glia-derived nexin	N-linked	6	6	6	8	1	7	12	14	11	5	5	4	8	6	9	9
Q9Y490	TLN1	Talin-1		7	4	20	13	11	2	1			10	6	11	6			7
P08758	ANXA5	Annexin A5		5	3	10	8	2	6	5	18	3	7	6	4	4	13	19	21
P35579	MYH9	Myosin-9				11	9	7	10		20		3		1	15			24

ACCN	Gene Name	Protein Name	Annotated Glycosylated	N1	N2	N3	N4	N5	N6	N7	N8	C1	C2	C3	C4	C5	C6	C7	C8
P68871	HBB	Hemoglobin subunit beta	N-linked	2	4	10	8	5	4	10	12	3	2	3	5	10	24	25	22
P23229	ITGA6	Integrin alpha-6	N-linked	5	9	8	7	6	5	7	6	2	2	1	5	2	7	8	
P60660	MYL6	Myosin light polypeptide 6		7	1	5	7	3	2	7	20	4	6	4	3	4	7	8	10
P09758	TACSTD2	Tumor-associated calcium signal transducer 2	N-linked	3	6	7	7	3	6	11	5	3	4	4	6	6	13	18	11
P08133	ANXA6	Annexin A6			1	10	4	5	1		26								9
Q08380	LGALS3BP	Galectin-3-binding protein	N-linked	11	4	5	7	4	2	7	6	8	11	14	3	8	15	18	6
Q09666	AHNAK	Neuroblast differentiation-associated protein AHNAK		1	6	9	12	5	3	7	2	8	6	7	11	13	5	7	4
Q16853	AOC3	Membrane primary amine oxidase	N-linked, O-linked		2	10	5	2	3	11	12	4	2		3	6	7	10	11
P13647	KRT5	Keratin, type II cytoskeletal 5			4	8	3	6	2	11	9	9	2		5	5	10	10	9
Q13740	ALCAM	CD166 antigen	N-linked	5	5	3	5	5	4	8	8	8	7	8	7	10	20	23	19
P02768	ALB	Serum albumin	N-linked	1	2	6	4	4	3	8	14	5	1	1	3	5	12	13	15
P09493	TPM1	Tropomyosin alpha-1 chain		4	3	8	6	5	3	8	5	3	6	5	3	7	10	9	13
P10909	CLU	Clusterin	N-linked	4	3	7	5	6	3	9	5	5	3	4	4	8	12	14	9
P60709	ACTB	Actin, cytoplasmic 1		5	5	6	4	5			17	3	6	3	5	6	23	29	25
P02533	KRT14	Keratin, type I cytoskeletal 14		1	7	8	4			14	6	11	3		5	3	8	9	11
Q15758	SLC1A5	Neutral amino acid transporter B	N-linked	6	3	4	7	2	6	5	7	7	6	6	2	3	10	11	9
P11142	HSPA8	Heat shock cognate 71 kDa protein		6	6	4	3	6	5	4	4				7	3	14	14	12
P11021	HSPA5	78 kDa glucose-regulated protein		3	9	9	3		4	4	5	2	5	6	10	11	19	23	29
P51888	PRELP	Prolargin	N-linked	3	2	2	5	3	2		20		1		3	5	8	16	25
P25311	AZGP1	Zinc-alpha-2-glycoprotein	N-linked	3	5	3	3	1	4	13	4	4	2	2	3	5	22	30	14
P05362	ICAM1	Intercellular adhesion molecule 1	N-linked	6	4	5	4	3	2	6	4	6	7	7	5	4	13	16	17
P08779	KRT16	Keratin, type I cytoskeletal 16			7	7				14	6	8			5		8	9	11
P12109	COL6A1	Collagen alpha-1	N-linked	1	1	3	1	3	1	1	23				1	3	2	8	8
P08648	ITGA5	Integrin alpha-5	N-linked	1	5	5	4	5	3	6	4	4	4	5	3	4	16	11	16
P62805	HIST1H4A	Histone H4		2	1	5	4	2	4	4	11	2	3	2	3	3	7	10	10
P04259	KRT6B	Keratin, type II cytoskeletal 6B		4	5					12	11	11			5	5	14		
P05787	KRT8	Keratin, type II cytoskeletal 8				6	5	2	4	8	7				7	5	16	20	33



ACCN	Gene Name	Protein Name	Annotated Glycosylated	N1	N2	N3	N4	N5	N6	N7	N8	C1	C2	C3	C4	C5	C6	C7	C8
P07355	ANXA2	Annexin A2		4	3	7	5	3	3		7		5	5			24	32	18
P26006	ITGA3	Integrin alpha-3	N-linked	5	3	3	5	1	3	4	8	2	2	2	2	1	6	6	
O75976	CPD	Carboxypeptidase D	N-linked	1	10	2	9	2	5	1	1	3	5	2	11	11	19	25	10
P15144	ANPEP	Aminopeptidase N	N-linked	6	10		2		1	12		15	3	4	18	10	51	56	24
P62736	ACTA2	Actin, aortic smooth muscle								5	26						23	32	33
P02788	LTF	Lactotransferrin	N-linked	9	12	1	2			4	2	1		1	25	6			
P63104	YWHAZ	14-3-3 protein zeta/delta		5	3	7	6	3	4		2	3	8	6	4	6	10	11	17
P11279	LAMP1	Lysosome-associated membrane glycoprotein 1	N-linked, O-linked	4	2	4	3	2	3	7	4	3	4	3	4	4	7	8	9
P68032	ACTC1	Actin, alpha cardiac muscle 1								5	24						23		33
Q14108	SCARB2	Lysosome membrane protein 2	N-linked	2	3	4	5	1	3	7	4	3	4	4	2	5	16	15	9
P02545	LMNA	Prelamin-A/C [Cleaved into: Lamin-A/C		3	2	3	5	4	7	2	2	2	3	4	6	4	4	12	35
P02751	FN1	Fibronectin	N-linked, O-linked	1	6	6	4	8			1		1	1	10	8		1	1
P07951	TPM2	Tropomyosin beta chain			3	5	7		3	6	2			5	3	5	8	5	12
P11047	LAMC1	Laminin subunit gamma-1	N-linked	1		3	3	2	5		12				1	2			2
P54709	ATP1B3	Sodium/potassium-transporting ATPase subunit beta-3	N-linked	3	2	3	2	3	2	4	7	1	1	2	2	2	8	10	6
P08962	CD63	CD63 antigen	N-linked	2	1	3	3	1	2	5	8	3	2	3	2	3	8	12	8
P35613	BSG	Basigin	N-linked	4	3	4	5	1	2	5	1	3	4	4	2	5	5	10	6
Q06830	PRDX1	Peroxiredoxin-1		1	2	3	3	2	3	7	4	2	2	2	3	3	6	8	9
Q8NBJ4	GOLM1	Golgi membrane protein 1	N-linked		4	2	3	1	4	11		5	6	8	7	7	6	14	2
P05026	ATP1B1	Sodium/potassium-transporting ATPase subunit beta-1	N-linked	4	1	3	3	2	2	3	6	1	4	3	2	3	3	4	2
P05090	APOD	Apolipoprotein D	N-linked	1	4	3	2	1	4	5	4	3	4	5	3	3	7	7	7
P06733	ENO1	Alpha-enolase		4	6	5	3	2	3		1	1	4	4	6	3	12	24	10
Q14126	DSG2	Desmoglein-2	N-linked	4	2	4	6	3	1	2	2	2	7	5	3	3	6	4	
Q96KK5	HIST1H2AH	Histone H2A type 1-H		2	1	2	3	3	2	2	9		2	2	2	2	7	8	8
P06731	CEACAM5	Carcinoembryonic antigen-related cell adhesion molecule 5	N-linked	3		4	4	3	3	3	3	3	2	2			4	5	2
P08473	MME	Neprilysin	N-linked		1	2	7		2	11		2			1	8	7	8	4
P12110	COL6A2	Collagen alpha-2	N-linked			2	3	3	2		13					2	3	4	6

ACCN	Gene Name	Protein Name	Annotated Glycosylated	N1	N2	N3	N4	N5	N6	N7	N8	C1	C2	C3	C4	C5	C6	C7	C8
P13473	LAMP2	Lysosome-associated membrane glycoprotein 2	N-linked, O-linked	2	1	3	4	2	3	3	5	2	2	2	1	5	6	6	6
P27348	YWHAQ	14-3-3 protein theta		5		4	4		4	3	3	3	5	5					8
P27701	CD82	CD82 antigen	N-linked	4	1	5	4			8	1	5	2	3	1	4		1	
P68133	ACTA1	Actin, alpha skeletal muscle								5	18						23		27
Q13641	TPBG	Trophoblast glycoprotein	N-linked	3	2	2	5	1	2	2	6	1	1	2	2	2	4	5	7
P04792	HSPB1	Heat shock protein beta-1		3	2	2	2	2	1	4	6		5	3	1	2	6	8	7
P16284	PECAM1	Platelet endothelial cell adhesion molecule	N-linked	4	2	5	4		1	2	4	2	5	5	1	6	4	8	9
P21810	BGN	Biglycan	N-linked, O-linked	2	1	1	1	3	1	2	11	1	1	1	1	2	5	10	17
P51911	CNN1	Calponin-1		2	3	4	4	4		2	3		3	3	4	6	2	5	6
Q05707	COL14A1	Collagen alpha-1	N-linked, O-linked	1		9	2	2	2		6					3			12
P20774	OGN	Mimecan	N-linked, O-linked	2		2	2	1	3		11		1	1		1			4
P24844	MYL9	Myosin regulatory light polypeptide 9			3	5	4			3	6				3	4	4	4	6
P68104	EEF1A1	Elongation factor 1-alpha 1		4	2	2	2	2	1	3	5	2	2	1	1	3	12	17	8
Q13510	ASAH1	Acid ceramidase	N-linked	1	4	3	2	2	2	5	2	6	1	3	7	3	12	11	8
Q92542	NCSTN	Nicastrin	N-linked	1	3	2	5	1	3	5	1	4	2	5	3	8	9	12	3
Q9BQE3	TUBA1C	Tubulin alpha-1C chain			1	3	1	2	1		13				1	1	15	20	11
O60814	HIST1H2BK	Histone H2B type 1-K	O-linked	1	2	4	2	3	3	1	4		1	1	1	3		3	5
P01033	TIMP1	Metalloproteinase inhibitor 1	N-linked	3	3	2	2	2	1	4	3	2	2	2	2	2	4	4	4
P02538	KRT6A	Keratin, type II cytoskeletal 6A				11					9								
P02794	FTH1	Ferritin heavy chain			1	4	3		2	4	6		2	1	2	3	9	10	14
P05121	SERPINE1	Plasminogen activator inhibitor 1	N-linked	2	5	5	2	2	1	3			1	1	1	1	2	3	4
P08670	VIM	Vimentin	O-linked			3	2	2	2		11				2	2	10	13	21
P10809	HSPD1	60 kDa heat shock protein, mitochondrial			1	6	5	2	2		4	2	4	4	8	11	19	24	29
Q14CN2	CLCA4	Calcium-activated chloride channel regulator 4	N-linked	4	1	4	4	2	3	2		1			1				
P07237	P4HB	Protein disulfide-isomerase			1	5	2	2	1	7	1				1	8	17	22	28
P07339	CTSD	Cathepsin D	N-linked, O-linked	3	6	1	5	1	2		1	4	3	4	6	3	12	13	4
P0DMV8	HSPA1A	Heat shock 70 kDa protein 1A			6		4	5	2		2				5		10	15	11

ACCN	Gene Name	Protein Name	Annotated Glycosylated	N1	N2	N3	N4	N5	N6	N7	N8	C1	C2	C3	C4	C5	C6	C7	C8
P0CG48	UBC	Polyubiquitin-C		2	1	1	2	2	1	4	6	1	3	3	2	2	5	6	5
P13688	CEACAM1	Carcinoembryonic antigen-related cell adhesion molecule 1	N-linked	2	3	2	4	3			5				2	3	8	10	4
P62258	YWHAE	14-3-3 protein epsilon		4		4	4	2	4		1		5	3	4	3	9	10	9
P06753	TPM3	Tropomyosin alpha-3 chain		2		5	5		2	4		3	5	5	2	6		4	5
Q06323	PSME1	Proteasome activator complex subunit 1		1	1	4	5		3	4		1	4	3	4	6	5	7	2
P23528	CFL1	Cofilin-1		3	3	2	3	1	1	2	2	1	4	4	3	3	7	8	4
P32119	PRDX2	Peroxiredoxin-2		1		2	2	2	2	5	3	1	2	2	3	2		4	3
P43121	MCAM	Cell surface glycoprotein MUC18	N-linked	1	1	4	4	2	1		4	2	1	1	1	5	1	2	3
P50895	BCAM	Basal cell adhesion molecule	N-linked	1	3	3	3		3	4		7	2	2	6	5	10	11	2
P63261	ACTG1	Actin, cytoplasmic 2									17						23	29	25
Q03135	CAV1	Caveolin-1		3		4	2	1			7		1	1		1	2	2	2
P02786	TFRC	Transferrin receptor protein 1	N-linked, O-linked	3	4	2	4		3			2	5	5	3		3	4	10
P04406	GAPDH	Glyceraldehyde-3-phosphate dehydrogenase		1	2	2	2	2	1		6		1	1	3	2	8	11	10
P14625	HSP90B1	Endoplasmic	N-linked		4	2	1	4	4		1		3	1	4	2	22	25	33
P15586	GNS	N-acetylglucosamine-6-sulfatase	N-linked	2	3	2	3		1	5		2	3	4	3	5	9	10	4
P18827	SDC1	Syndecan-1	N-linked, O-linked	2	2	1	1	2	2	2	4	1	1	1		1	2	2	2
P45880	VDAC2	Voltage-dependent anion-selective channel protein 2		5		4	3	1	1		2	1	6	5	3	1	10	10	10
P55268	LAMB2	Laminin subunit beta-2	N-linked			2	4	1	1		8					1			
Q08722	CD47	Leukocyte surface antigen CD47	N-linked	1	1	1		1	1	7	4	2	1	1	1	1	6	7	6
Q15746	MYLK	Myosin light chain kinase, smooth muscle		4		1	3	3	2	2	1	1	4	3	2	2			
P04179	SOD2	Superoxide dismutase [Mn], mitochondrial			1	2	3		3	4	2	2			2	3	9	14	7
P08238	HSP90AB1	Heat shock protein HSP 90-beta	O-linked	2	3	2	2		3	2	1				3	2	13	24	15
P08727	KRT19	Keratin, type I cytoskeletal 19				3		3	4		5					2	9	12	15
P13796	LCP1	Plastin-2		2	3	5	3	1	1				2	4	3	3	6	7	11
Q14BN4	SLMAP	Sarcolemmal membrane-associated protein				7	4	4				1				2			
Q9P2B2	PTGFRN	Prostaglandin F2 receptor negative regulator	N-linked	1	4	3	3	1	1	2		3			2	2	7	9	1
P15309	ACPP	Prostatic acid phosphatase	N-linked	1	2	2	2	3	1	3		2	1		3	5	19	28	13

ACCN	Gene Name	Protein Name	Annotated Glycosylated	N1	N2	N3	N4	N5	N6	N7	N8	C1	C2	C3	C4	C5	C6	C7	C8
P16070	CD44	CD44 antigen	N-linked, O-linked	3	2	1	2	1	1	2	2	4	2	2	1	1	4	6	6
P21589	NT5E	5'-nucleotidase	N-linked	1	1	2	3	1	1		5			1		1			
P60174	TPI1	Triosephosphate isomerase		2	1	3	1	2	1	2	2	1	3	2	1	2	7	9	7
Q07065	CKAP4	Cytoskeleton-associated protein 4				6	1	3	1		3				3	1			8
P02792	FTL	Ferritin light chain		1	1	2	1	2	1	3	2	1	1	1	1	1	6	8	10
P09382	LGALS1	Galectin-1			2	2	2		1	4	2	1		1	1	3	2	2	4
P27824	CANX	Calnexin		1		1	1	1	1	5	3	2	2	1	1	3	8	9	14
P31947	SFN	14-3-3 protein sigma				4	4		4		1						6		7
P68363	TUBA1B	Tubulin alpha-1B chain									13						15	20	11
P69905	HBA1;	Hemoglobin subunit alpha	N-linked		1	5	2	3			2					3	11	12	11
Q6YHK3	CD109	CD109 antigen	N-linked	2	3	2	2		2		2		2	1	2				
Q99715	COL12A1	Collagen alpha-1	N-linked, O-linked		1	1	2	1	2		6					6	2	4	5
P27105	STOM	Erythrocyte band 7 integral membrane protein			1	4	4	1			2				3				
P30048	PRDX3	Thioredoxin-dependent peroxide reductase, mitochondrial				2	2	2	1		5				2	3	4	6	8
P38646	HSPA9	Stress-70 protein, mitochondrial			6	1		2	1	1	1				7	4	4	5	4
Q15063	POSTN	Periostin	N-linked			2	3		2		5		1	1					24
Q8IV08	PLD3	Phospholipase D3	N-linked	2	2	1	3		2	2		1	2	1	2	1	4	4	
Q92520	FAM3C	Protein FAM3C		1	4		2	1	1	2	1	1	1	1	2	3			
Q9UIQ6	LNPEP	Leucyl-cystinyl aminopeptidase	N-linked	2		2	3	1	2		2		1	2	4	2	3	7	1
O14494	PLPP1	Phospholipid phosphatase 1	N-linked		2	2	3	2	2				1	2	2	2	4	6	3
P00558	PGK1	Phosphoglycerate kinase 1		2	4		1	2	2				2	1	5	2	15	20	7
P01009	SERPINA1	Alpha-1-antitrypsin	N-linked	1	3	2	2			2	1	2	1	1	3	4	5	6	2
P02042	HBD	Hemoglobin subunit delta				5					6				2	5	14	15	12
P02750	LRG1	Leucine-rich alpha-2-glycoprotein	N-linked, O-linked		1	1	3			6		2		3	5	7	7	9	2
P04083	ANXA1	Annexin A1				3		1			7						5	8	8
P04908	HIST1H2A B	Histone H2A type 1-B/E								2	9						7	8	8
P06703	S100A6	Protein S100-A6			1	1	1		1	5	2	2	1	2		1	4	4	3

ACCN	Gene Name	Protein Name	Annotated Glycosylated	N1	N2	N3	N4	N5	N6	N7	N8	C1	C2	C3	C4	C5	C6	C7	C8
P08253	MMP2	72 kDa type IV collagenase	N-linked	3	1	3	4					3	2	2	3				
P0C0S8	HIST1H2A G	Histone H2A type 1								2	9						7	8	8
P12830	CDH1	Cadherin-1	N-linked	1		4	3	2	1				1	2		4		3	
P13987	CD59	CD59 glycoprotein	N-linked, O-linked	1	1	1	2	1	1	2	2	1	1	1	1	1	2	2	2
P20671	HIST1H2A D	Histone H2A type 1-D								2	9						7	8	8
P23142	FBLN1	Fibulin-1	N-linked	2	2	2	3			2		1	2	2	1		3	3	
Q16777	HIST2H2A C	Histone H2A type 2-C								2	9						7	8	8
Q53GD3	SLC44A4	Choline transporter-like protein 4	N-linked	1	2	1	2	1	2	2		2	2	2	2	1	3	7	2
Q6FI13	HIST2H2A A3	Histone H2A type 2-A								2	9						7	8	8
Q7L7L0	HIST3H2A	Histone H2A type 3								2	9						7	8	8
Q8NFD2	ANKK1	Ankyrin repeat and protein kinase domain-containing protein 1					4	7								1			
Q93077	HIST1H2A C	Histone H2A type 1-C								2	9						7	8	8
Q99878	HIST1H2A J	Histone H2A type 1-J								2	9						7	8	8
Q9BTM1	H2AFJ	Histone H2A.J								2	9						7	8	8
Q9Y6C2	EMILIN1	EMILIN-1	N-linked			5	3	2	1							3			
O00391	QSOX1	Sulfhydryl oxidase 1	N-linked	3	1	1	2	2		1			1	3				2	
P00750	PLAT	Tissue-type plasminogen activator	N-linked, O-linked	1	2		1	1	1	4		1			1				
P05155	SERPING1	Plasma protease C1 inhibitor	N-linked, O-linked	1	2	1	1		1	4		3		1	3	2	14	16	
P06576	ATP5B	ATP synthase subunit beta, mitochondrial	O-linked		1	2	2	1	2		2			1	6	1	12	20	14
P07195	LDHB	L-lactate dehydrogenase B chain		1		2	1	2	2		2		1		1		2	5	4
P0CG47	UBB	Polyubiquitin-B [Cleaved into: Ubiquitin]								4	6						5	6	5
P16422	EPCAM	Epithelial cell adhesion molecule	N-linked	1	1	1	1	1	1	2	2	3	2	2	1	2	2	4	
P19105	MYL12A	Myosin regulatory light chain 12A						1	1	4	4	1				4	6	4	8
P29401	TKT	Transketolase		1	1	2		5	1						1	1		7	7
P35580	MYH10	Myosin-10									10								9
P42892	ECE1	Endothelin-converting enzyme 1	N-linked	3	1		3		1		2	2	3	2	3	4	2	7	3
P62979	RPS27A	Ubiquitin-40S ribosomal protein S27a								4	6						5	6	5

ACCN	Gene Name	Protein Name	Annotated Glycosylated	N1	N2	N3	N4	N5	N6	N7	N8	C1	C2	C3	C4	C5	C6	C7	C8
P62987	UBA52	Ubiquitin-60S ribosomal protein L40								4	6						5	6	5
P78310	CXADR	Coxsackievirus and adenovirus receptor	N-linked	2	1	1	2		1	3		2	2	3	1	4	2	2	
Q05682	CALD1	Caldesmon		2	3	2	1	1		1		4	6	10	4	2			6
Q14315	FLNC	Filamin-C		2				4			4								3
Q16563	SYPL1	Synaptophysin-like protein 1	N-linked	1	1	1	1	1	1	2	2	1	1	2	1	1	2	2	2
Q6UX06	OLFM4	Olfactomedin-4	N-linked	5	1		4					1	2	2	2		10	13	
Q71U36	TUBA1A	Tubulin alpha-1A chain									10								9
Q7Z406	MYH14	Myosin-14									10								6
Q9H5V8	CDCP1	CUB domain-containing protein 1	N-linked		1	3	3	2	1			1	2	1		3	6	1	
O15118	NPC1	Niemann-Pick C1 protein	N-linked	1	1	1	3		2		1	1	2	2	1	2	8	6	3
P04075	ALDOA	Fructose-bisphosphate aldolase A		1	2	3		2	1				1		2	2	7	8	7
P07602	PSAP	Prosaposin	N-linked	2		1	2			4		2	1	2		3			
P07996	THBS1	Thrombospondin-1	N-linked, O-linked	2	3	1	3					1	2	4	2	1	2	2	
P27487	DPP4	Dipeptidyl peptidase 4	N-linked		1	2	2	1	1	2		3			2	6	8	8	9
P39060	COL18A1	Collagen alpha-1	N-linked, O-linked	1	1	2	2		1	2			1			2			2
P48668	KRT6C	Keratin, type II cytoskeletal 6C									9								
Q04695	KRT17	Keratin, type I cytoskeletal 17				5					4	5							6
A5A3E0	POTEF	POTE ankyrin domain family member F									8								12
O14950	MYL12B	Myosin regulatory light chain 12B								4	4						6	4	8
O60487	MPZL2	Myelin protein zero-like protein 2	N-linked	1		1	2	1	1	2			2	2	1	1	2		
O95858	TSPAN15	Tetraspanin-15	N-linked		1	1	2		1	3		2			1	1	3	2	
P01019	AGT	Angiotensinogen	N-linked		2		1		2	3			1		2	1	4	6	
P07737	PFN1	Profilin-1		1	1	2	1		1		2		1	2	3	1	2	6	3
P10253	GAA	Lysosomal alpha-glucosidase	N-linked		1	3	1	1		2			1	1	3	5	10	13	
P31949	S100A11	Protein S100-A11		1		2	1		2		2	1	2	2			4	4	4
P34931	HSPA1L	Heat shock 70 kDa protein 1-like		4							4								
P37802	TAGLN2	Transgelin-2		2	1	2	2		1				3	3	1	1	2	2	7

ACCN	Gene Name	Protein Name	Annotated Glycosylated	N1	N2	N3	N4	N5	N6	N7	N8	C1	C2	C3	C4	C5	C6	C7	C8
P54652	HSPA2	Heat shock-related 70 kDa protein 2								4	4		3	3					10
P80188	LCN2	Neutrophil gelatinase-associated lipocalin	N-linked		1	1	2	1	2		1	1			2	1	5	6	
P98160	HSPG2	Basement membrane-specific heparan sulfate proteoglycan core protein	N-linked, O-linked				1	1	2		4								
Q15365	PCBP1	Poly		1	1	1	1		1	2	1	1	2	1	1		2	2	2
Q16787	LAMA3	Laminin subunit alpha-3	N-linked				1	3	2	2									
Q5VTE0	EEF1A1P5	Putative elongation factor 1-alpha-like 3								3	5						12	17	8
Q6S8J3	POTEE	POTE ankyrin domain family member E									8								12
Q7Z2Q7	LRRC70	Leucine-rich repeat-containing protein 70	N-linked		2	4		2								2			
Q8N271	PROM2	Prominin-2	N-linked	2	1	1	4						3	1	3				
Q8NBN3	TMEM87A	Transmembrane protein 87A	N-linked	1	1	1	3	1	1				1	1		2	4	5	2
Q8WUH2	TGFBRAP1	Transforming growth factor-beta receptor-associated protein 1					4	4											
Q96KP4	CNDP2	Cytosolic non-specific dipeptidase				3	1	1	1	2					3	3	9	12	9
Q9BVK6	TMED9	Transmembrane emp24 domain-containing protein 9	N-linked	1	1	2		1	1	2			1	1	2	3	8	7	3
O00461	GOLIM4	Golgi integral membrane protein 4	N-linked		1	1	1	1	1		2				1	1			
O43653	PSCA	Prostate stem cell antigen	N-linked		1	1			1	2	2		1						
O75369	FLNB	Filamin-B						4			3							4	3
O94919	ENDOD1	Endonuclease domain-containing 1 protein			1	1	1	1	1	2			1		3	1	2	2	
P00533	EGFR	Epidermal growth factor receptor	N-linked		2		1		1	2	1			1	1		2	2	
P01889	HLA-B	HLA class I histocompatibility antigen, B-7 alpha chain	N-linked	3						4			3				6		
P05023	ATP1A1	Sodium/potassium-transporting ATPase subunit alpha-1				3	2				2						9	5	9
P07288	KLK3	Prostate-specific antigen	N-linked		1		1	1	1	2	1	1		1	2	2	7	9	5
P07585	DCN	Decorin	N-linked, O-linked	1		3					3		1	1		2		1	5
P15941	MUC1	Mucin-1	N-linked, O-linked	1	1	1	1		1	2		1	2	3	1	2	5	8	1
P19256	CD58	Lymphocyte function-associated antigen 3	N-linked	1		1	1		1	2	1	1		1	1	1	2	2	
P25705	ATP5A1	ATP synthase subunit alpha, mitochondrial	O-linked			3	2		2						5		13	15	12
P37837	TALDO1	Transaldolase		1	1	1	1	1	1	1			1	1	2	1	5	7	3
P40926	MDH2	Malate dehydrogenase, mitochondrial	O-linked	1		3	1	1	1				1		4	3	4	8	16





ACCN	Gene Name	Protein Name	Annotated Glycosylated	N1	N2	N3	N4	N5	N6	N7	N8	C1	C2	C3	C4	C5	C6	C7	C8
Q15149	PLEC	Plectin					3	1	2						2				
Q92764	KRT35	Keratin, type I cuticular Ha5				4					2								2
Q9BYX7	POTEKP	Putative beta-actin-like protein 3									6								8
Q9NY65	TUBA8	Tubulin alpha-8 chain									6								6
A6NIZ1		Ras-related protein Rap-1b-like protein Agrin [Cleaved into: Agrin N-terminal 110 kDa subunit; Agrin C-terminal 110 kDa subunit; Agrin C-terminal 90 kDa fragment]		1			1		1		2		1	1					2
O00468	AGRN		N-linked, O-linked	1			1		1		2								
O14493	CLDN4	Claudin-4				1	1		1	2		1	1	1	1	1	2	2	2
O43707	ACTN4	Alpha-actinin-4						3			2						2	5	12
O43852	CALU	Calumenin	N-linked			1			1	3			1	1			3	4	5
O60664	PLIN3	Perilipin-3			3	2								1	4	3			
P00505	GOT2	Aspartate aminotransferase, mitochondrial				3		2									1	4	10
P04040	CAT	Catalase				3		2											
P06899	HIST1H2BJ	Histone H2B type 1-J	O-linked							1	4							3	3
P10319	HLA-B	HLA class I histocompatibility antigen, B-58 alpha chain	N-linked		1		2		2							2			4
P10599	TXN	Thioredoxin				1	2			2		3				2	2	2	2
P13646	KRT13	Keratin, type I cytoskeletal 13									5								11
P15151	PVR	Poliovirus receptor	N-linked	1	1	1	2					1	1		1	2	2		2
P15259	PGAM2	Phosphoglycerate mutase 2					1		1	2	1		1				2	2	2
P16870	CPE	Carboxypeptidase E	N-linked		1			1	1	2					1		2	2	
P17813	ENG	Endoglin	N-linked		1	2	2						3	1	2	2	4	4	7
P23284	PPIB	Peptidyl-prolyl cis-trans isomerase B	N-linked		3	1	1								4	1	4	5	7
P23527	HIST1H2BO	Histone H2B type 1-O	O-linked							1	4							3	3
P30041	PRDX6	Peroxiredoxin-6		1	2						2	1	1	2	1		3	6	5
P31946	YWHAB	14-3-3 protein beta/alpha		4							1		3	4					3
P33778	HIST1H2BB	Histone H2B type 1-B	O-linked							1	4							3	3
P36269	GGT5	Gamma-glutamyltransferase 5	N-linked		1	1	1				2		1	1	2	1	2	2	4





ACCN	Gene Name	Protein Name	Annotated Glycosylated	N1	N2	N3	N4	N5	N6	N7	N8	C1	C2	C3	C4	C5	C6	C7	C8
P30480	HLA-B	HLA class I histocompatibility antigen, B-42 alpha chain	N-linked								4						6		
P35052	GPC1	Glypican-1	N-linked, O-linked			2	1		1										
P35573	AGL	Glycogen debranching enzyme			1	1	1		1			1				1	1		1
P51572	BCAP31	B-cell receptor-associated protein 31				1	2			1					1	1	2	2	2
P55072	VCP	Transitional endoplasmic reticulum ATPase					2	2											
P56199	ITGA1	Integrin alpha-1	N-linked			1	1				2	1	1	4		3			8
Q00796	SORD	Sorbitol dehydrogenase						2	1	1					1	2	6	9	1
Q01650	SLC7A5	Large neutral amino acids transporter small subunit 1	N-linked	2	1							1							
Q04826	HLA-B	HLA class I histocompatibility antigen, B-40 alpha chain	N-linked								4								
Q13336	SLC14A1	Urea transporter 1	N-linked	1		1	1					1							
Q13751	LAMB3	Laminin subunit beta-3	N-linked	1			2		1										
Q2M2I5	KRT24	Keratin, type I cytoskeletal 24										4							4
Q5XKE5	KRT79	Keratin, type II cytoskeletal 79										4							
Q71UI9	H2AFV	Histone H2A.V										4							5
Q92187	ST8SIA4	CMP-N-acetylneuraminase-poly-alpha-2,8-sialyltransferase	N-linked		1	1	1	1				1		1		1			
Q92485	SMPDL3B	Acid sphingomyelinase-like phosphodiesterase 3b	N-linked				1		1	2		1			2	2	1	2	
Q969L2	MAL2	Protein MAL2	N-linked							2	2			1	1	2	2	2	
Q96QV6	HIST1H2A A	Histone H2A type 1-A										4							4
Q96S97	MYADM	Myeloid-associated differentiation marker				1			1		2				1	1			
Q9BVC6	TMEM109	Transmembrane protein 109			1	1	1					1		1	1	1	2	1	2
Q9NSB4	KRT82	Keratin, type II cuticular Hb2				4													
Q9Y5Y6	ST14	Suppressor of tumorigenicity 14 protein	N-linked		1		1			2					1				
A6NGU5	GGT3P	Putative gamma-glutamyltranspeptidase 3	N-linked		1					2		2			3	3	2	3	3
A7E2Y1	MYH7B	Myosin-7B				1	2					1							
O43240	KLK10	Kallikrein-10	N-linked			1	1	1											
O95678	KRT75	Keratin, type II cytoskeletal 75										3							5
P02763	ORM1	Alpha-1-acid glycoprotein 1	N-linked								3	4				2	2	7	

ACCN	Gene Name	Protein Name	Annotated Glycosylated	N1	N2	N3	N4	N5	N6	N7	N8	C1	C2	C3	C4	C5	C6	C7	C8
P04233	CD74	HLA class II histocompatibility antigen gamma chain	N-linked, O-linked		1	1	1					1			2	1	2	2	
P04350	TUBB4A	Tubulin beta-4A chain									3								
P07492	GRP	Gastrin-releasing peptide		1				2						1					
P08123	COL1A2	Collagen alpha-2	N-linked	1							2					1			
P09238	MMP10	Stromelysin-2		1			1		1						2		2	2	
P09525	ANXA4	Annexin A4					2		1								3	4	3
P0C0L4	C4A	Complement C4-A	N-linked, O-linked						1	2		1			5	7		63	1
P12277	CKB	Creatine kinase B-type					1		2						2		5	6	1
P13726	F3	Tissue factor	N-linked						1	2		1							1
P14618	PKM	Pyruvate kinase PKM							1		2				1		11	14	1
P17693	HLA-G	HLA class I histocompatibility antigen, alpha chain G	N-linked							3									2
P18084	ITGB5	Integrin beta-5	N-linked				1		2			1							
P18669	PGAM1	Phosphoglycerate mutase 1								2	1						2	2	2
P19013	KRT4	Keratin, type II cytoskeletal 4									3								7
P30456	HLA-A	HLA class I histocompatibility antigen, A-43 alpha chain	N-linked	3															4
P30501	HLA-C	HLA class I histocompatibility antigen, Cw-2 alpha chain	N-linked				3					3							5
P49221	TGM4	Protein-glutamine gamma-glutamyltransferase 4					2		1										
P50336	PPOX	Protoporphyrinogen oxidase								1	2						2	2	2
P55058	PLTP	Phospholipid transfer protein	N-linked				2		1						3				
P68371	TUBB4B	Tubulin beta-4B chain									3						7	18	
P98172	EFNB1	Ephrin-B1	N-linked		2	1													
Q01518	CAP1	Adenylyl cyclase-associated protein 1					1	1	1							1	2	2	3
Q12767	TMEM94	Transmembrane protein 94	N-linked	1							2								
Q13228	SELENBP1	Selenium-binding protein 1					2		1						1				
Q13813	SPTAN1	Spectrin alpha chain, non-erythrocytic 1					1		2										1
Q14118	DAG1	Dystroglycan	N-linked, O-linked		1					2					1	1			
Q14512	FGFBP1	Fibroblast growth factor-binding protein 1	O-linked	1	1		1							1	1				

ACCN	Gene Name	Protein Name	Annotated Glycosylated	N1	N2	N3	N4	N5	N6	N7	N8	C1	C2	C3	C4	C5	C6	C7	C8
Q14956	GPNUMB	Transmembrane glycoprotein NMB	N-linked		1	1	1								1	2	1		
Q5T9S5	CCDC18	Coiled-coil domain-containing protein 18					1		1		1				1				
Q5VU43	PDE4DIP	Myomegalin				1		2											
Q687X5	STEAP4	Metalloreductase STEAP4	N-linked		2				1						1	2		2	7
Q6EMK4	VASN	Vasorin	N-linked	1	1		1					1	1	1	1	1		1	5
Q7Z794	KRT77	Keratin, type II cytoskeletal 1b									3								3
Q8IXW5	RPAP2	Putative RNA polymerase II subunit B1 CTD phosphatase RPAP2					2		1										
Q8N0Y7	PGAM4	Probable phosphoglycerate mutase 4								2	1						2	2	2
Q969P0	IGSF8	Immunoglobulin superfamily member 8	N-linked	1			1		1				2	2	1				
Q96DA0	ZG16B	Zymogen granule protein 16 homolog B	N-linked		1		2					3					3	4	
Q99456	KRT12	Keratin, type I cytoskeletal 12								1	2								2
Q99988	GDF15	Growth/differentiation factor 15	N-linked		1					2					2	1	10	11	4
Q9C0H2	TTYH3	Protein tweety homolog 3	N-linked	1	1		1						1	3	1	2			
Q9H853	TUBA4B	Putative tubulin-like protein alpha-4B									3								2
Q9HBA9	FOLH1B	Putative N-acetylated-alpha-linked acidic dipeptidase	N-linked				1			2									1
Q9NQC3	RTN4	Reticulon-4				1	2									2	1	2	1
Q9UDY6	TRIM10	Tripartite motif-containing protein 10		3									5	5					
Q9Y3E0	GOLT1B	Vesicle transport protein GOT1B		1		1	1					1	1	1		1	1	2	
Q9Y653	ADGRG1	Adhesion G-protein coupled receptor G1	N-linked	1			1				1								
A6NNZ2		Tubulin beta-8 chain-like protein LOC260334									2								
B3KS81	SRRM5	Serine/arginine repetitive matrix protein 5						2											
O00584	RNASET2	Ribonuclease T2	N-linked						1	1							1	1	4
O00746	NME4	Nucleoside diphosphate kinase, mitochondrial				1	1												
O14880	MGST3	Microsomal glutathione S-transferase 3					1				1							1	
O15519	CFLAR	CASP8 and FADD-like apoptosis regulator					1		1										
O15551	CLDN3	Claudin-3								2							2	2	3
O43493	TGOLN2	Trans-Golgi network integral membrane protein 2	N-linked			1	1					2	1	2	1	1		1	

ACCN	Gene Name	Protein Name	Annotated Glycosylated	N1	N2	N3	N4	N5	N6	N7	N8	C1	C2	C3	C4	C5	C6	C7	C8
O75106	AOC2	Retina-specific copper amine oxidase	N-linked								2								4
O94886	TMEM63A	CSC1-like protein 1				1			1						1		1	2	
O94985	CLSTN1	Calsyntenin-1	N-linked	1			1												
O95197	RTN3	Reticulon-3									2						2	2	2
O95484	CLDN9	Claudin-9								2							2	2	2
O95786	DDX58	Probable ATP-dependent RNA helicase DDX58		2															
P00403	MT-CO2	Cytochrome c oxidase subunit 2					1				1				1		2	2	2
P01574	IFNB1	Interferon beta	N-linked								2								
P01833	PIGR	Polymeric immunoglobulin receptor	N-linked	1			1						2	1		1			
P01903	HLA-DRA	HLA class II histocompatibility antigen, DR alpha chain	N-linked		1	1							2	2	2	2	2	2	4
P02100	HBE1	Hemoglobin subunit epsilon									2								1
P04921	GYPC	Glycophorin-C	N-linked, O-linked		2								1		1				
P05783	KRT18	Keratin, type I cytoskeletal 18	O-linked								2				2		6	6	14
P06396	GSN	Gelsolin				1		1									1	2	2
P06748	NPM1	Nucleophosmin		1		1							1	2	1	2		4	
P07686	HEXB	Beta-hexosaminidase subunit beta	N-linked				1	1									2	3	
P08572	COL4A2	Collagen alpha-2	N-linked								2								2
P0C0L5	C4B	Complement C4-B	N-linked								2						34	63	1
P12035	KRT3	Keratin, type II cytoskeletal 3									2								5
P12757	SKIL	Ski-like protein					1		1					4					
P13639	EEF2	Elongation factor 2				1		1									4	7	7
P13747	HLA-E	HLA class I histocompatibility antigen, alpha chain E	N-linked				2									2			2
P14136	GFAP	Glial fibrillary acidic protein									2								3
P14649	MYL6B	Myosin light chain 6B									2								2
P17066	HSPA6	Heat shock 70 kDa protein 6									2								
P18564	ITGB6	Integrin beta-6	N-linked		1		1								1			2	
P19440	GGT1	Gamma-glutamyltranspeptidase 1	N-linked								2						2	3	3









ACCN	Gene Name	Protein Name	Annotated Glycosylated	N1	N2	N3	N4	N5	N6	N7	N8	C1	C2	C3	C4	C5	C6	C7	C8
B1APH4	ZNF487	Putative zinc finger protein 487		1										1					
C9JVW0	INAFM1	Putative transmembrane protein INAFM1							1										
O14495	PLPP3	Phospholipid phosphatase 3	N-linked			1													
O14558	HSPB6	Heat shock protein beta-6						1				1							
O14672	ADAM10	Disintegrin and metalloproteinase domain-containing protein 10	N-linked		1										1	1			
O14773	TPP1	Tripeptidyl-peptidase 1	N-linked					1									2	3	
O43570	CA12	Carbonic anhydrase 12	N-linked				1												
O43657	TSPAN6	Tetraspanin-6	N-linked	1								1	1	1		1			
O60347	TBC1D12	TBC1 domain family member 12						1											
O95425	SVIL	Supervillin							1							1			
P00441	SOD1	Superoxide dismutase [Cu-Zn]					1									1		2	
P00915	CA1	Carbonic anhydrase 1				1											2	3	
P01834	IGKC	Immunoglobulin kappa constant		1															
P01857	IGHG1	Immunoglobulin heavy constant gamma 1	N-linked			1													
P02649	APOE	Apolipoprotein E	N-linked, O-linked	1									5	5		1			
P02743	APCS	Serum amyloid P-component	N-linked																1
P02787	TF	Serotransferrin	N-linked, O-linked						1							1			
P04004	VTN	Vitronectin	N-linked												1				
P04062	GBA	Glucosylceramidase	N-linked						1						2		2	2	
P05141	SLC25A5	ADP/ATP translocase 2															2	4	4
P05937	CALB1	Calbindin																	
P07196	NEFL	Neurofilament light polypeptide	O-linked																1
P07197	NEFM	Neurofilament medium polypeptide	O-linked																1
P07858	CTSB	Cathepsin B	N-linked				1					1	1				1	3	
P07942	LAMB1	Laminin subunit beta-1	N-linked	1									1	1					
P08294	SOD3	Extracellular superoxide dismutase [Cu-Zn]	N-linked							1					1		2	2	
P09211	GSTP1	Glutathione S-transferase P			1												1	5	





ACCN	Gene Name	Protein Name	Annotated Glycosylated	N1	N2	N3	N4	N5	N6	N7	N8	C1	C2	C3	C4	C5	C6	C7	C8
Q13126	MTAP	S-methyl-5'-thioadenosine phosphorylase					1												
Q13136	PPFIA1	Liprin-alpha-1										1							
Q13315	ATM	Serine-protein kinase ATM						1											
Q13642	FHL1	Four and a half LIM domains protein 1		1															2
Q14112	NID2	Nidogen-2	N-linked									1							
Q14116	IL18	Interleukin-18						1											
Q14204	DYNC1H1	Cytoplasmic dynein 1 heavy chain 1						1											
Q14232	EIF2B1	Translation initiation factor eIF-2B subunit alpha		1												1			
Q14974	KPNB1	Importin subunit beta-1					1						1						
Q14980	NUMA1	Nuclear mitotic apparatus protein 1	O-linked		1										1				
Q15084	PDIA6	Protein disulfide-isomerase A6						1							1		8	7	6
Q15262	PTPRK	Receptor-type tyrosine-protein phosphatase kappa	N-linked				1								1	3	2	4	
Q15366	PCBP2	Poly			1														
Q15836	VAMP3	Vesicle-associated membrane protein 3					1												
Q16352	INA	Alpha-internexin										1							1
Q3MIR4	TMEM30B	Cell cycle control protein 50B	N-linked		1										1		1		
Q4KMZ1	IQCC	IQ domain-containing protein C							1										
Q53HC0	CCDC92	Coiled-coil domain-containing protein 92			1										1				
Q5SYB0	FRMPD1	FERM and PDZ domain-containing protein 1			1														
Q5VWN6	FAM208B	Protein FAM208B					1												
Q68DK2	ZFYVE26	Zinc finger FYVE domain-containing protein 26									1								
Q6NZI2	PTRF	Polymerase I and transcript release factor					1												
Q6P1J6	PLB1	Phospholipase B1, membrane-associated	N-linked					1								1			
Q6PI98	INO80C	INO80 complex subunit C					1												
Q6UWU2	GLB1L	Beta-galactosidase-1-like protein	N-linked					1											
Q6UXG2	KIAA1324	UPF0577 protein KIAA1324	N-linked		1							2	1	1	1		6	6	2
Q6ZRP7	QSOX2	Sulfhydryl oxidase 2	N-linked	1									1						



ACCN	Gene Name	Protein Name	Annotated Glycosylated	N1	N2	N3	N4	N5	N6	N7	N8	C1	C2	C3	C4	C5	C6	C7	C8
Q9BYB0	SHANK3	SH3 and multiple ankyrin repeat domains protein 3					1												
Q9BYG4	PARD6G	Partitioning defective 6 homolog gamma					1												
Q9GZN1	ACTR6	Actin-related protein 6								1									
Q9GZZ9	UBA5	Ubiquitin-like modifier-activating enzyme 5						1											
Q9H0C2	SLC25A31	ADP/ATP translocase 4									1						2		4
Q9NQ84	GPRC5C	G-protein coupled receptor family C group 5 member C	N-linked		1										1				
Q9NQX4	MYO5C	Unconventional myosin-Vc							1										
Q9NR09	BIRC6	Baculoviral IAP repeat-containing protein 6							1										
Q9NVN3	RIC8B	Synembryn-B									1								
Q9NX62	IMPAD1	Inositol monophosphatase 3	N-linked						1										
Q9NY35	CLDND1	Claudin domain-containing protein 1	N-linked	1															
Q9NYZ2	SLC25A37	Mitoferrin-1		1										1					
Q9NZK5	CECR1	Adenosine deaminase CECR1	N-linked							1									
Q9P2E9	RRBP1	Ribosome-binding protein 1					1					5	1		3	6			
Q9UBY0	SLC9A2	Sodium/hydrogen exchanger 2	N-linked				1					1							
Q9UBZ9	REV1	DNA repair protein REV1					1												
Q9UGC7	MTRF1L	Peptide chain release factor 1-like, mitochondrial		1															
Q9UGM3	DMBT1	Deleted in malignant brain tumors 1 protein	N-linked	1															
Q9UHL4	DPP7	Dipeptidyl peptidase 2	N-linked				1									7	6	10	1
Q9UKX3	MYH13	Myosin-13			1														
Q9ULX5	RNF112	RING finger protein 112			1														
Q9UMS6	SYNPO2	Synaptopodin-2		1								1	2	3					
Q9UNN8	PROCR	Endothelial protein C receptor	N-linked							1									2
Q9Y6M5	SLC30A1	Zinc transporter 1	N-linked				1												
Q9Y6R7	FCGBP	IgGFc-binding protein	N-linked				1												
A1L1A6	IGSF23	Immunoglobulin superfamily member 23	N-linked										1						
A6NMS3	OR5K4	Olfactory receptor 5K4	N-linked									1							



ACCN	Gene Name	Protein Name	Annotated Glycosylated	N1	N2	N3	N4	N5	N6	N7	N8	C1	C2	C3	C4	C5	C6	C7	C8
A8MQT2	GOLGA8B	Golgin subfamily A member 8B														1			
A8MTJ3	GNAT3	Guanine nucleotide-binding protein G															2	2	
B2RTY4	MYO9A	Unconventional myosin-IXa														1			
O00161	SNAP23	Synaptosomal-associated protein 23										1				1			
O00459	PIK3R2	Phosphatidylinositol 3-kinase regulatory subunit beta														1			
O00533	CHL1	Neural cell adhesion molecule L1-like protein	N-linked												4				
O00592	PODXL	Podocalyxin	N-linked														1	1	2
O14497	ARID1A	AT-rich interactive domain-containing protein 1A											1						
O14556	GAPDHS	Glyceraldehyde-3-phosphate dehydrogenase, testis-specific																	2
O14617	AP3D1	AP-3 complex subunit delta-1														2			
O15031	PLXNB2	Plexin-B2	N-linked										1				1	2	
O43278	SPINT1	Kunitz-type protease inhibitor 1	N-linked												1				
O43286	B4GALT5	Beta-1,4-galactosyltransferase 5	N-linked														2	2	2
O43505	B4GAT1	Beta-1,4-glucuronyltransferase 1	N-linked												1				
O43567	RNF13	E3 ubiquitin-protein ligase RNF13	N-linked											1				2	
O43760	SYNGR2	Synaptogyrin-2										2			2	2	1	1	6
O43829	ZBTB14	Zinc finger and BTB domain-containing protein 14																	1
O60264	SMARCA5	SWI/SNF-related matrix-associated actin-dependent regulator of chromatin subfamily A member 5															1		
O60293	ZFC3H1	Zinc finger C3H1 domain-containing protein														3			
O60361	NME2P1	Putative nucleoside diphosphate kinase																	2
O60888	CUTA	Protein CutA													1				
O75071	EFCAB14	EF-hand calcium-binding domain-containing protein 14														1			
O75144	ICOSLG	ICOS ligand	N-linked									1				1	1		
O75185	ATP2C2	Calcium-transporting ATPase type 2C member 2											1						
O75223	GGCT	Gamma-glutamylcyclotransferase													1				
O75390	CS	Citrate synthase, mitochondrial																	1
O75874	IDH1	Isocitrate dehydrogenase [NADP] cytoplasmic															6	10	4









ACCN	Gene Name	Protein Name	Annotated Glycosylated	N1	N2	N3	N4	N5	N6	N7	N8	C1	C2	C3	C4	C5	C6	C7	C8
P30505	HLA-C	HLA class I histocompatibility antigen, Cw-8 alpha chain	N-linked																5
P30508	HLA-C	HLA class I histocompatibility antigen, Cw-12 alpha chain	N-linked																7
P30510	HLA-C	HLA class I histocompatibility antigen, Cw-14 alpha chain	N-linked																5
P30512	HLA-A	HLA class I histocompatibility antigen, A-29 alpha chain	N-linked																4
P35232	PHB	Prohibitin															6	10	9
P35237	SERPINB6	Serpin B6													1	1			
P35241	RDX	Radixin																	4
P35442	THBS2	Thrombospondin-2	N-linked												1	1			
P35609	ACTN2	Alpha-actinin-2																	3
P37198	NUP62	Nuclear pore glycoprotein p62	O-linked													1			
P38405	GNAL	Guanine nucleotide-binding protein G															2	2	
P39656	DDOST	Dolichyl-diphosphooligosaccharide--protein glycosyltransferase 48 kDa subunit															4	4	
P40189	IL6ST	Interleukin-6 receptor subunit beta	N-linked													1			
P40925	MDH1	Malate dehydrogenase, cytoplasmic															2	2	2
P41219	PRPH	Peripherin																	2
P41222	PTGDS	Prostaglandin-H2 D-isomerase	N-linked, O-linked												1				
P41250	GARS	Glycine--tRNA ligase																1	1
P42126	ECI1	Enoyl-CoA delta isomerase 1, mitochondrial													1				4
P43251	BTD	Biotinidase	N-linked												1	1			
P43490	NAMPT	Nicotinamide phosphoribosyltransferase																12	
P47755	CAPZA2	F-actin-capping protein subunit alpha-2															2		
P47756	CAPZB	F-actin-capping protein subunit beta																1	2
P47895	ALDH1A3	Aldehyde dehydrogenase family 1 member A3															2	4	
P49447	CYB561	Cytochrome b561										1				1		2	1
P49448	GLUD2	Glutamate dehydrogenase 2, mitochondrial															2	7	15
P49721	PSMB2	Proteasome subunit beta type-2																1	1
P49755	TMED10	Transmembrane emp24 domain-containing protein 10	N-linked														1	1	2



ACCN	Gene Name	Protein Name	Annotated Glycosylated	N1	N2	N3	N4	N5	N6	N7	N8	C1	C2	C3	C4	C5	C6	C7	C8
P63092	GNAS	Guanine nucleotide-binding protein G															2	2	
P63096	GNAI1	Guanine nucleotide-binding protein G															2	2	
P68036	UBE2L3	Ubiquitin-conjugating enzyme E2 L3										1							
P78504	JAG1	Protein jagged-1	N-linked										1						
P81605	DCD	Dermcidin										2							
P84077	ARF1	ADP-ribosylation factor 1															2	4	
P84085	ARF5	ADP-ribosylation factor 5															2	4	
P98095	FBLN2	Fibulin-2	N-linked, O-linked																1
Q01469	FABP5	Fatty acid-binding protein, epidermal														1		2	
Q01638	IL1RL1	Interleukin-1 receptor-like 1	N-linked									1				1			
Q03113	GNA12	Guanine nucleotide-binding protein subunit alpha-12															2	2	
Q07000	HLA-C	HLA class I histocompatibility antigen, Cw-15 alpha chain	N-linked																5
Q07157	TJP1	Tight junction protein ZO-1										1			1				
Q08043	ACTN3	Alpha-actinin-3																	2
Q09160	HLA-A	HLA class I histocompatibility antigen, A-80 alpha chain	N-linked																2
Q12907	LMAN2	Vesicular integral-membrane protein VIP36	N-linked												1				2
Q12913	PTPRJ	Receptor-type tyrosine-protein phosphatase eta	N-linked													1			
Q13011	ECH1	Delta																	4
Q13033	STRN3	Striatin-3																	2
Q13443	ADAM9	Disintegrin metalloproteinase domain-containing protein 9	N-linked													1			
Q14240	EIF4A2	Eukaryotic initiation factor 4A-II															2	2	
Q14344	GNA13	Guanine nucleotide-binding protein subunit alpha-13															2	2	
Q14651	PLS1	Plastin-1																	2
Q14697	GANAB	Neutral alpha-glucosidase AB	N-linked															3	5
Q14814	MEF2D	Myocyte-specific enhancer factor 2D													1				
Q14964	RAB39A	Ras-related protein Rab-39A															2	2	2
Q15075	EEA1	Early endosome antigen 1													1				





ACCN	Gene Name	Protein Name	Annotated Glycosylated	N1	N2	N3	N4	N5	N6	N7	N8	C1	C2	C3	C4	C5	C6	C7	C8
Q58FF6	HSP90AB4 P	Putative heat shock protein HSP 90-beta 4																	3
Q58FF7	HSP90AB3 P	Putative heat shock protein HSP 90-beta-3																	5
Q58FG0	HSP90AA5 P	Putative heat shock protein HSP 90-alpha A5																	1
Q5BJF6	ODF2	Outer dense fiber protein 2														2			
Q5JR59	MTUS2	Microtubule-associated tumor suppressor candidate 2														1			
Q5JWF2	GNAS	Guanine nucleotide-binding protein G															2	2	
Q5JXB2	UBE2NL	Putative ubiquitin-conjugating enzyme E2 N-like															1	1	
Q5TZA2	CROCC	Rootletin															1	2	
Q5VZ19	TDRD10	Tudor domain-containing protein 10										2	2	2		2			
Q5Y7A7	HLA-DRB1	HLA class II histocompatibility antigen, DRB1-13 beta chain	N-linked																4
Q5ZPR3	CD276	CD276 antigen	N-linked																1
Q6IQ22	RAB12	Ras-related protein Rab-12																	2
Q6TFL3	CCDC171	Coiled-coil domain-containing protein 171															2		
Q6UWV6	ENPP7	Ectonucleotide pyrophosphatase/phosphodiesterase family member 7	N-linked														2		
Q6UXD5	SEZ6L2	Seizure 6-like protein 2	N-linked									1							
Q6WRI0	IGSF10	Immunoglobulin superfamily member 10	N-linked														1		
Q7Z7M0	MEGF8	Multiple epidermal growth factor-like domains protein 8	N-linked																1
Q86YS6	RAB43	Ras-related protein Rab-43																	2
Q86YS7	C2CD5	C2 domain-containing protein 5													2				
Q8IYM9	TRIM22	E3 ubiquitin-protein ligase TRIM22										1			1				
Q8IZA0	KIAA0319L	Dyslexia-associated protein KIAA0319-like protein	N-linked									1							
Q8IZF2	ADGRF5	Adhesion G protein-coupled receptor F5	N-linked										1	1					
Q8N8E3	CEP112	Centrosomal protein of 112 kDa										1			1				
Q8NBS9	TXNDC5	Thioredoxin domain-containing protein 5																	4
Q8NC54	KCT2	Keratinocyte-associated transmembrane protein 2	N-linked													1			
Q8NDX2	SLC17A8	Vesicular glutamate transporter 3	N-linked													1			
Q8NFZ8	CADM4	Cell adhesion molecule 4	N-linked												1				

ACCN	Gene Name	Protein Name	Annotated Glycosylated	N1	N2	N3	N4	N5	N6	N7	N8	C1	C2	C3	C4	C5	C6	C7	C8
Q8NHP8	PLBD2	Putative phospholipase B-like 2	N-linked												1				
Q8TD06	AGR3	Anterior gradient protein 3																	2
Q8TDR0	TRAF3IP1	TRAF3-interacting protein 1													1	1			
Q8TEQ0	SNX29	Sorting nexin-29										2		2					
Q8WTV0	SCARB1	Scavenger receptor class B member 1	N-linked											1		1		2	
Q92930	RAB8B	Ras-related protein Rab-8B																	3
Q95365	HLA-B	HLA class I histocompatibility antigen, B-38 alpha chain	N-linked														6		
Q95604	HLA-C	HLA class I histocompatibility antigen, Cw-17 alpha chain	N-linked																4
Q95IE3	HLA-DRB1	HLA class II histocompatibility antigen, DRB1-12 beta chain	N-linked																2
Q969X5	ERGIC1	Endoplasmic reticulum-Golgi intermediate compartment protein 1	N-linked														1	2	1
Q96AX2	RAB37	Ras-related protein Rab-37																	2
Q96DA2	RAB39B	Ras-related protein Rab-39B																	2
Q96DC7	TMCO6	Transmembrane and coiled-coil domain-containing protein 6																	2
Q96E17	RAB3C	Ras-related protein Rab-3C																	2
Q96HE7	ERO1A	ERO1-like protein alpha	N-linked												1		1	1	
Q96HL8	SH3YL1	SH3 domain-containing YSC84-like protein 1										1							
Q96HR9	REEP6	Receptor expression-enhancing protein 6													1	1			1
Q96NY8	NECTIN4	Nectin-4	N-linked									1							
Q96PQ0	SORCS2	VPS10 domain-containing receptor SorCS2	N-linked														1		
Q99538	LGMN	Legumain	N-linked										1	1	1	1			2
Q99623	PHB2	Prohibitin-2																	2
Q9BQ51	PDCD1LG2	Programmed cell death 1 ligand 2	N-linked																1
Q9BTY2	FUCA2	Plasma alpha-L-fucosidase	N-linked																1
Q9BYT9	ANO3	Anoctamin-3	N-linked												1				
Q9H082	RAB33B	Ras-related protein Rab-33B															2	2	2
Q9H0U4	RAB1B	Ras-related protein Rab-1B															5	6	3
Q9H0V1	TMEM168	Transmembrane protein 168	N-linked										1						

ACCN	Gene Name	Protein Name	Annotated Glycosylated	N1	N2	N3	N4	N5	N6	N7	N8	C1	C2	C3	C4	C5	C6	C7	C8
Q9H3K2	GHITM	Growth hormone-inducible transmembrane protein													1				
Q9H3R2	MUC13	Mucin-13	N-linked												1				
Q9H3Z4	DNAJC5	DnaJ homolog subfamily C member 5																	1
Q9H8J5	MANSC1	MANSC domain-containing protein 1	N-linked									1				1			
Q9HAU0	PLEKHA5	Pleckstrin homology domain-containing family A member 5													1				
Q9HB40	SCPEP1	Retinoid-inducible serine carboxypeptidase	N-linked															2	
Q9HC07	TMEM165	Transmembrane protein 165																2	
Q9HD45	TM9SF3	Transmembrane 9 superfamily member 3	N-linked														1	2	
Q9HDC9	APMAP	Adipocyte plasma membrane-associated protein	N-linked														4	4	7
Q9NPR9	GPR108	Protein GPR108	N-linked															1	
Q9NQH7	XPNPEP3	Probable Xaa-Pro aminopeptidase 3																1	1
Q9NRW1	RAB6B	Ras-related protein Rab-6B															2	2	2
Q9NUN5	LMBRD1	Probable lysosomal cobalamin transporter	N-linked														2	2	1
Q9NV96	TMEM30A	Cell cycle control protein 50A	N-linked										1	1			1		
Q9NYL4	FKBP11	Peptidyl-prolyl cis-trans isomerase FKBP11													1	1			
Q9NZ56	FMN2	Formin-2																	2
Q9P2G4	MAP10	Microtubule-associated protein 10											1	1					
Q9TNN7	HLA-C	HLA class I histocompatibility antigen, Cw-5 alpha chain	N-linked																4
Q9UFN0	NIPSNAP3 A	Protein NipSnap homolog 3A																1	2
Q9UHC9	NPC1L1	Niemann-Pick C1-like protein 1	N-linked														1	2	
Q9UHG3	PCYOX1	Preylcysteine oxidase 1	N-linked														4	6	3
Q9UPA5	BSN	Protein bassoon	O-linked												1				
Q9UPZ6	THSD7A	Thrombospondin type-1 domain-containing protein 7A	N-linked												1				
Q9Y281	CFL2	Cofilin-2																	2
Q9Y394	DHRS7	Dehydrogenase/reductase SDR family member 7															2	6	2
Q9Y646	CPQ	Carboxypeptidase Q	N-linked												1	3			
Q9Y6N5	SQRDL	Sulfide:quinone oxidoreductase, mitochondrial															1	1	1

