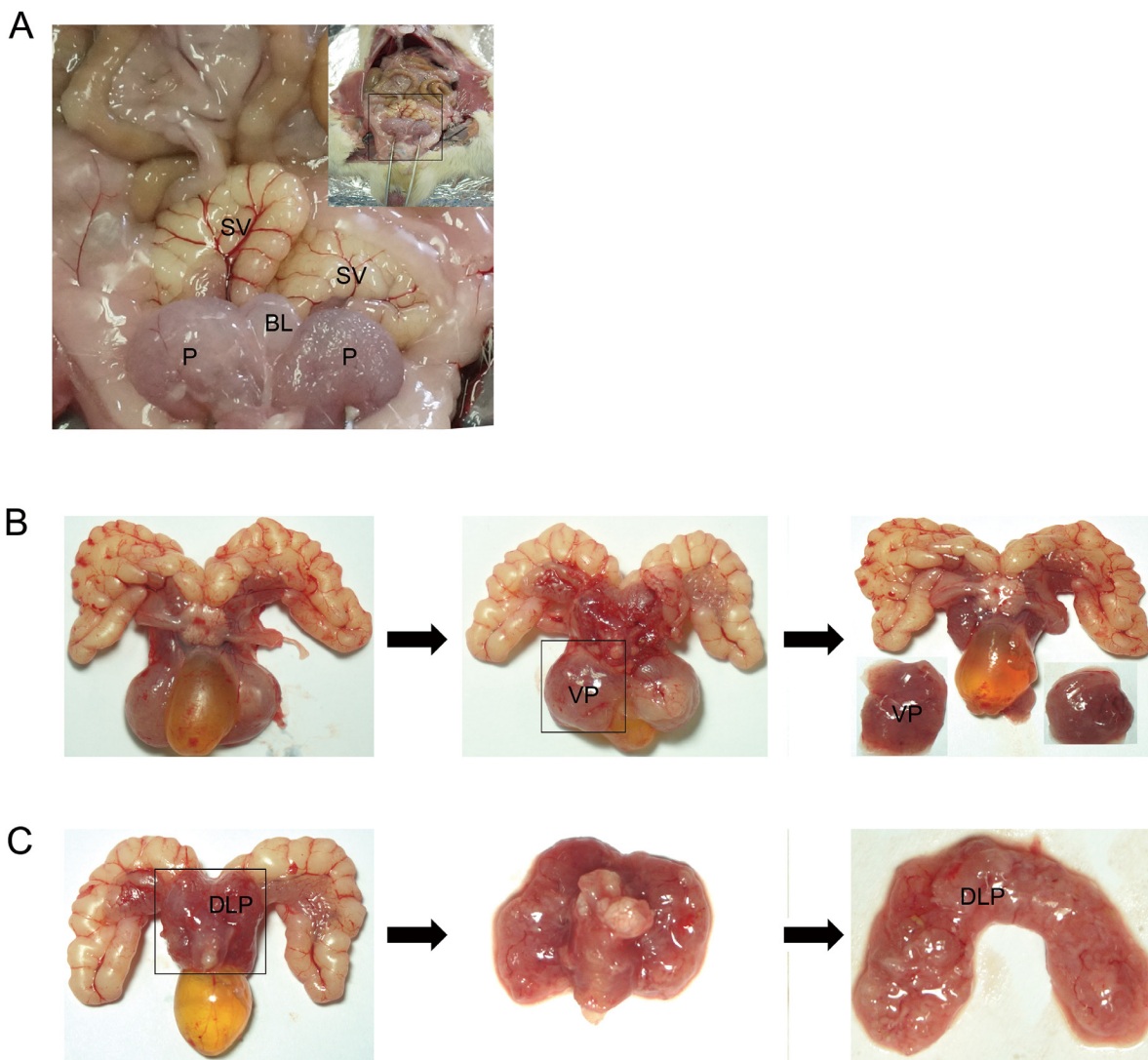


Vanillic acid attenuates testosterone-induced benign prostatic hyperplasia in rats and inhibits proliferation of prostatic epithelial cells

SUPPLEMENTARY MATERIALS



Supplementary Figure 1: The location and dissection of the prostate. (A) Genital organs in the abdominal cavity (SV, seminal vesicle; BL, bladder; P, prostate). (B) Ventral view of the isolated organs (VP, ventral prostate) and (C) dorsal view of the isolated organs (DLP, dorsolateral prostate). The dissection proceeded as stated in the steps.