

Table S1: Strains and Polymorphisms

Chromosome	Strains	Variation	Size	Position Start	Position End
I	AB3	WBVar02075018	-244	1893223	1893466
	ED3049	WBVar02076986	-116	1893090	1893205
II (a)	MY2	WBVar02075171	-68	12828041	12828108
	JU258	WBVar02007146	-129	12827972	12828100
II (b)	CB4856	WBVar00091051	-174	1256637	1256810
	JU258	WBVar02040112	-77	1256729	1256805
III	AB3	WBVar02075237	-146	2889726	2889871
	ED3049	WBVar01999312	-59	2889444	2889502
IV	MY2	WBVar02022215	-123	15349999	15350121
	JU258	WBVar02078568	-56	15349619	15349674
V	CB2856	WBVar02076232	-162	19725512	19725618
		WBVar02074913	-107	19725689	19725850
	JU258	WBVar02074913	-107	19725689	19725850

Table S1: Strains and polymorphisms used to track inheritance in triploid x diploid crosses.

Table S2: All polymorphisms that differ from N2 in 2 different wild strains.

List 1

Chromosome	Strain 1	Polymorphism	Start	Stop	Length	Strain 2	Polymorphism	Start	Stop	Length
I	AB1	WBVar02080489	2610436	2610437	70	ED3049	WBVar02001683	2612381	2612423	-43
I	AB1	WBVar02080489	2610436	2610437	70	ED3049	WBVar02097244	2612753	2612754	52
II	AB1	WBVar01916099	3128822	3128893	-72	ED3049	WBVar02097638	3125644	3125645	48
III	AB1	WBVar02081802	12197528	12197529	44	ED3049	WBVar02077064	12198607	12199017	-411
III	AB1	WBVar01920082	12442194	12442262	-69	ED3049	WBVar02003410	12442158	12442226	-69
IV	AB1	WBVar02074756	1020751	1020919	-169	ED3049	WBVar02077068	1020239	1020636	-398
IV	AB1	WBVar02082278	3126965	3126966	91	ED3049	WBVar02003715	3126874	3126938	-65
V	AB1	WBVar02074869	18576742	18576864	-123	ED3049	WBVar02098752	18576122	18576169	-48
V	AB1	WBVar01925669	19294513	19294562	-50	ED3049	WBVar02098761	19290194	19290195	49
X	AB1	WBVar02074973	17256947	17257065	-119	ED3049	WBVar02098879	17256905	17256988	-84
I	ED3049	WBVar02001853	11190674	11190778	-105	AB3	WBVar01932525	11194116	11194184	-69
I	ED3049	WBVar02001318	1688367	1688459	-93	AB3	WBVar01931017	1687191	1687280	-90
I	ED3049	WBVar02001345	1783402	1783479	-78	AB3	WBVar02075012	1783461	1783572	-112
I	ED3049	WBVar02001346	1783516	1783592	-77	AB3	WBVar02075012	1783461	1783572	-112
I	ED3049	WBVar02001370	1891326	1891430	-105	AB3	WBVar01931168	1891326	1891395	-70
I	ED3049	WBVar02076986	1893090	1893205	-116	AB3	WBVar02075018	1893223	1893466	-244
I	ED3049	WBVar02001381	1926511	1926553	-43	AB3	WBVar01931203	1927061	1927103	-43
I	ED3049	WBVar02001381	1926511	1926553	-43	AB3	WBVar01931205	1927968	1928026	-59
I	ED3049	WBVar02076988	1939845	1939957	-113	AB3	WBVar01931219	1937815	1937883	-69
I	ED3049	WBVar02001411	1970537	1970612	-76	AB3	WBVar01988366	1973030	1973131	-102
I	ED3049	WBVar02076989	1974507	1974626	-120	AB3	WBVar01988366	1973030	1973131	-102
I	ED3049	WBVar02076994	2501728	2501899	-172	AB3	WBVar01931677	2501882	2501935	-54
I	ED3049	WBVar02076994	2501728	2501899	-172	AB3	WBVar02075030	2500547	2500653	-107
I	ED3049	WBVar02076995	2504708	2504825	-118	AB3	WBVar01931677	2501882	2501935	-54
I	ED3049	WBVar02076995	2504708	2504825	-118	AB3	WBVar02075030	2500547	2500653	-107
II	ED3049	WBVar02077047	12230680	12230983	-304	AB3	WBVar01936089	12234746	12234822	-77
II	ED3049	WBVar02077052	13336794	13336914	-121	AB3	WBVar02075178	13339250	13339545	-296
II	ED3049	WBVar02097740	13409894	13409895	56	AB3	WBVar01936682	13409816	13409870	-55
II	ED3049	WBVar02097740	13409894	13409895	56	AB3	WBVar02085026	13409918	13409919	56
III	ED3049	WBVar02077057	2112572	2112942	-371	AB3	WBVar01937911	2113385	2113463	-79
III	ED3049	WBVar02097798	2718921	2718922	73	AB3	WBVar01938195	2718882	2718923	-42

III	ED3049	WBVar02003304	3272812	3272853	-42	AB3	WBVar01938659	3271177	3271236	-60
IV	ED3049	WBVar02077084	16837737	16837853	-117	AB3	WBVar01940685	16839740	16839812	-73
V	ED3049	WBVar02098752	18576122	18576169	-48	AB3	WBVar01940803	18576123	18576169	-47
V	ED3049	WBVar02098555	4052585	4052664	-80	AB3	WBVar01940736	4051689	4051776	-88
X	ED3049	WBVar02098853	14236630	14236708	-79	AB3	WBVar01941989	14236637	14236698	-62
I	ED3052	WBVar02077169	1169882	1170127	-246	CB4856	WBVar02075701	1168048	1168234	-187
II	ED3052	WBVar02099354	11307013	11307014	72	CB4856	WBVar02089242	11307013	11307014	48
II	ED3052	WBVar02007146	12828041	12828108	-68	CB4856	WBVar01960670	12828849	12828927	-79
II	ED3052	WBVar02077223	13343756	13344107	-352	CB4856	WBVar01960749	13344730	13344786	-57
II	ED3052	WBVar02077225	13398204	13398476	-273	CB4856	WBVar01960777	13395178	13395247	-70
II	ED3052	WBVar02007280	13627816	13627856	-41	CB4856	WBVar01960907	13629975	13630031	-57
II	ED3052	WBVar02007305	13747213	13747290	-78	CB4856	WBVar02089343	13747383	13747384	78
II	ED3052	WBVar02007305	13747213	13747290	-78	CB4856	WBVar01960967	13748532	13748590	-59
II	ED3052	WBVar02006763	1457601	1457669	-69	CB4856	WBVar01959194	1455966	1456050	-85
III	ED3052	WBVar02077240	1917890	1918069	-180	CB4856	WBVar01961992	1916321	1916395	-75
III	ED3052	WBVar02099504	2011892	2011893	93	CB4856	WBVar02075909	2014045	2014350	-306
IV	ED3052	WBVar02007871	1348018	1348083	-66	CB4856	WBVar01964558	1348973	1349040	-68
IV	ED3052	WBVar02007872	1349150	1349191	-42	CB4856	WBVar01964558	1348973	1349040	-68
IV	ED3052	WBVar02077257	1611530	1611833	-304	CB4856	WBVar01964719	1612027	1612118	-92
IV	ED3052	WBVar02007969	1612064	1612115	-52	CB4856	WBVar01964719	1612027	1612118	-92
IV	ED3052	WBVar02077258	1614606	1614723	-118	CB4856	WBVar01964719	1612027	1612118	-92
V	ED3052	WBVar02008790	1069439	1069545	-107	CB4856	WBVar01970792	1069973	1070046	-74
V	ED3052	WBVar02008920	18190475	18190529	-55	CB4856	WBVar02076204	18194921	18195388	-468
V	ED3052	WBVar02008920	18190475	18190529	-55	CB4856	WBVar02076204	18194921	18195388	-468
X	ED3052	WBVar02009008	1544686	1544748	-63	CB4856	WBVar01979392	1540860	1540901	-42
X	ED3052	WBVar02009008	1544686	1544748	-63	CB4856	WBVar02076270	1542487	1542678	-192
I	JU1171	WBVar02016446	11563213	11563302	-90	ED3049	WBVar02097284	11563412	11563481	-70
I	JU1171	WBVar02016446	11563213	11563302	-90	ED3049	WBVar02097285	11563526	11563598	-73
I	JU1171	WBVar02016446	11563213	11563302	-90	ED3049	WBVar02001975	11563869	11563938	-70
I	JU1171	WBVar02015983	1782797	1782873	-77	ED3049	WBVar02001345	1783402	1783479	-78
I	JU1171	WBVar02015983	1782797	1782873	-77	ED3049	WBVar02001346	1783516	1783592	-77
I	JU1171	WBVar02015984	1782949	1782990	-42	ED3049	WBVar02001345	1783402	1783479	-78
I	JU1171	WBVar02015984	1782949	1782990	-42	ED3049	WBVar02001346	1783516	1783592	-77
I	JU1171	WBVar02015985	1783041	1783084	-44	ED3049	WBVar02001345	1783402	1783479	-78

I	JU1171	WVar02015985	1783041	1783084	-44	ED3049	WVar02001346	1783516	1783592	-77
I	JU1171	WVar02016008	1890488	1890536	-49	ED3049	WVar02001370	1891326	1891430	-105
I	JU1171	WVar02016008	1890488	1890536	-49	ED3049	WVar02076986	1893090	1893205	-116
I	JU1171	WVar02077622	1891786	1892084	-299	ED3049	WVar02001370	1891326	1891430	-105
I	JU1171	WVar02077622	1891786	1892084	-299	ED3049	WVar02076986	1893090	1893205	-116
II	JU1171	WVar02077697	8877949	8878066	-118	ED3049	WVar02002883	8877662	8877744	-83
II	JU1171	WVar02018171	12200948	12200993	-46	ED3049	WVar02077046	12202885	12203023	-139
III	JU1171	WVar02019543	12277823	12277872	-50	ED3049	WVar02097831	12279717	12279777	-61
IV	JU1171	WVar02103531	3126874	3126973	-100	ED3049	WVar02003715	3126874	3126938	-65
IV	JU1171	WVar02020395	3526945	3527001	-57	ED3049	WVar02003738	3529461	3529514	-54
V	JU1171	WVar02077923	18575482	18575614	-133	ED3049	WVar02098752	18576122	18576169	-48
V	JU1171	WVar02025451	18575572	18575628	-57	ED3049	WVar02098752	18576122	18576169	-48
V	JU1171	WVar02025452	18576127	18576175	-49	ED3049	WVar02098752	18576122	18576169	-48
X	JU1171	WVar02078000	14252768	14253118	-351	ED3049	WVar02005470	14250312	14250362	-51
X	JU1171	WVar02078005	15713583	15713878	-296	ED3049	WVar02005590	15710635	15710728	-94

List 2

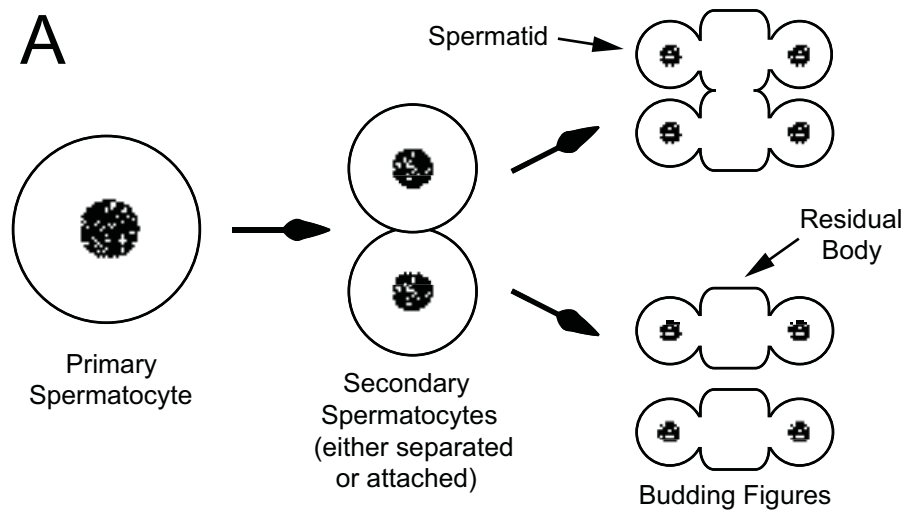
Chromosome	Strain 1	Polymorphism	Start	Stop	Length	Strain 2	Polymorphism	Start	Stop	Length
I	JU258	WVar02078445	1042094	1042245	-152	JU1171	WVar01930363	1043197	1043256	-60
I	JU1171	WVar02078453	1324181	1324345	-165	JU258	WVar01930620	1324164	1324257	-94
I	JU1171	WVar01933241	1086022	1086089	-68	JU258	WVar02077661	1085740	1085971	-232
II	JU258	WVar01239918	1411611	1411869	-259	JU1171	WVar02017413	1412142	1412205	-64
II	JU1171	WVar02077028	1946965	1947173	-209	JU258	WVar02102873	1946349	1946417	-69
II	JU1171	WVar02007146	12828041	12828108	-68	JU258	WVar02075171	12827972	12828100	-129
II	JU258	WVar02075185	13481436	13481654	-219	JU1171	WVar02014467	13482265	13482346	-82
II	JU1171	WVar01999077	13861868	13861922	-55	JU258	WVar02077711	13861149	13861314	-166
II	JU258	WVar00091209	1884492	1885092	-601	JU1171	WVar02074707	1884515	1885056	-542
III	JU1171	WVar02078524	11832794	11833038	-245	JU258	WVar02077748	11831884	11832040	-157
III	JU258	WVar02078532	1416442	1417206	-765	JU1171	WVar02077494	1416600	1416755	-156
IV	JU1171	WVar02078535	2156995	2157120	-126	JU258	WVar01921605	2156600	2156662	-63
IV	JU1171	WVar02075980	3310090	3310229	-140	JU258	WVar02077778	3310080	3310289	-210
IV	JU1171	WVar02077266	6607645	6607803	-159	JU258	WVar02103696	6606696	6606767	-72
IV	JU1171	WVar02078568	15349999	15350121	-123	JU258	WVar02022215	15349619	15349674	-56

IV	JU258	WBVar02043250	2170316	2170406	-91	JU1171	WBVar02077855	2171230	2171396	-167
V	JU1171	WBVar00091244	15319857	15320228	-372	JU258	WBVar02077896	15319849	15319991	-143
V	JU258	WBVar02044243	18347098	18347199	-102	JU1171	WBVar02077920	18347743	18347929	-187
V	JU258	WBVar01941014	19820220	19820306	-87	JU1171	WBVar02077950	19820824	19821016	-193
V	JU1171	WBVar02075304	20016582	20016700	-119	JU258	WBVar02077955	20016509	20016694	-186
V	JU1171	WBVar02075305	20069425	20069554	-130	JU258	WBVar02077960	20069103	20069326	-224
V	JU1171	WBVar01941130	20069954	20070004	-51	JU258	WBVar02077960	20069103	20069326	-224
V	JU1171	WBVar01941302	20400807	20400900	-94	JU258	WBVar02077968	20400071	20400345	-275
V	JU258	WBVar00091266	1362887	1363777	-891	JU1171	WBVar02076266	1362958	1363099	-142
X	JU258	WBVar02075324	14442575	14442688	-114	JU1171	WBVar02013883	14442604	14442657	-54
I	JU258	WBVar02078445	1042094	1042245	-152	MY2	WBVar01930363	1043197	1043256	-60
I	JU258	WBVar02039179	1209734	1209803	-70	MY2	WBVar02076691	1209826	1210196	-371
I	MY2	WBVar02078450	1210490	1210671	-182	JU258	WBVar02076691	1209826	1210196	-371
I	MY2	WBVar02078453	1324181	1324345	-165	JU258	WBVar01930620	1324164	1324257	-94
I	MY2	WBVar01947665	1904201	1904272	-72	JU258	WBVar02079634	1903348	1903816	-469
I	JU258	WBVar01239918	1411611	1411869	-259	MY2	WBVar02017413	1412142	1412205	-64
II	MY2	WBVar02077028	1946965	1947173	-209	JU258	WBVar02102873	1946349	1946417	-69
II	MY2	WBVar02007146	12828041	12828108	-68	JU258	WBVar02075171	12827972	12828100	-129
II	JU258	WBVar02075185	13481436	13481654	-219	MY2	WBVar02014467	13482265	13482346	-82
II	JU258	WBVar00091209	1884492	1885092	-601	MY2	WBVar02074707	1884515	1885056	-542
III	MY2	WBVar02078524	11832794	11833038	-245	JU258	WBVar02077748	11831884	11832040	-157
III	JU258	WBVar02078532	1416442	1417206	-765	MY2	WBVar02077494	1416600	1416755	-156
IV	MY2	WBVar02078535	2156995	2157120	-126	JU258	WBVar01921605	2156600	2156662	-63
IV	MY2	WBVar02075980	3310090	3310229	-140	JU258	WBVar02077778	3310080	3310289	-210
IV	MY2	WBVar02077266	6607645	6607803	-159	JU258	WBVar02103696	6606696	6606767	-72
IV	MY2	WBVar02078568	15349999	15350121	-123	JU258	WBVar02022215	15349619	15349674	-56
IV	JU258	WBVar02043250	2170316	2170406	-91	MY2	WBVar02077855	2171230	2171396	-167
V	MY2	WBVar00091244	15319857	15320228	-372	JU258	WBVar02077896	15319849	15319991	-143
V	JU258	WBVar02044243	18347098	18347199	-102	MY2	WBVar02077920	18347743	18347929	-187
V	JU258	WBVar01941014	19820220	19820306	-87	MY2	WBVar02077950	19820824	19821016	-193
V	MY2	WBVar02075305	20069425	20069554	-130	JU258	WBVar02077960	20069103	20069326	-224
V	MY2	WBVar01941130	20069954	20070004	-51	JU258	WBVar02077960	20069103	20069326	-224
V	MY2	WBVar01941302	20400807	20400900	-94	JU258	WBVar02077968	20400071	20400345	-275
V	JU258	WBVar02075312	20490869	20491226	-358	MY2	WBVar02079791	20491298	20491528	-231

V	JU258	WBVar00091266	1362887	1363777	-891	MY2	WBVar02076266	1362958	1363099	-142
X	JU258	WBVar02075324	14442575	14442688	-114	MY2	WBVar02013883	14442604	14442657	-54
I	JU258	WBVar02078445	1042094	1042245	-152	MY14	WBVar01930363	1043197	1043256	-60
I	MY14	WBVar02078453	1324181	1324345	-165	JU258	WBVar01930620	1324164	1324257	-94
I	MY14	WBVar01947665	1904201	1904272	-72	JU258	WBVar02079634	1903348	1903816	-469
I	JU258	WBVar01239918	1411611	1411869	-259	MY14	WBVar02017413	1412142	1412205	-64
II	MY14	WBVar02077028	1946965	1947173	-209	JU258	WBVar02102873	1946349	1946417	-69
II	MY14	WBVar02007146	12828041	12828108	-68	JU258	WBVar02075171	12827972	12828100	-129
II	JU258	WBVar02075185	13481436	13481654	-219	MY14	WBVar02014467	13482265	13482346	-82
II	JU258	WBVar00091209	1884492	1885092	-601	MY14	WBVar02074707	1884515	1885056	-542
III	MY14	WBVar02078524	11832794	11833038	-245	JU258	WBVar02077748	11831884	11832040	-157
III	JU258	WBVar02078532	1416442	1417206	-765	MY14	WBVar02077494	1416600	1416755	-156
IV	MY14	WBVar02078535	2156995	2157120	-126	JU258	WBVar01921605	2156600	2156662	-63
IV	MY14	WBVar02075980	3310090	3310229	-140	JU258	WBVar02077778	3310080	3310289	-210
IV	MY14	WBVar02077266	6607645	6607803	-159	JU258	WBVar02103696	6606696	6606767	-72
IV	MY14	WBVar02078568	15349999	15350121	-123	JU258	WBVar02022215	15349619	15349674	-56
IV	JU258	WBVar02043250	2170316	2170406	-91	MY14	WBVar02077855	2171230	2171396	-167
V	MY14	WBVar00091244	15319857	15320228	-372	JU258	WBVar02077896	15319849	15319991	-143
V	JU258	WBVar02044243	18347098	18347199	-102	MY14	WBVar02077920	18347743	18347929	-187
V	JU258	WBVar01941014	19820220	19820306	-87	MY14	WBVar02077950	19820824	19821016	-193
V	MY14	WBVar02075304	20016582	20016700	-119	JU258	WBVar02077955	20016509	20016694	-186
V	MY14	WBVar02075305	20069425	20069554	-130	JU258	WBVar02077960	20069103	20069326	-224
V	MY14	WBVar01941130	20069954	20070004	-51	JU258	WBVar02077960	20069103	20069326	-224
V	MY14	WBVar01941302	20400807	20400900	-94	JU258	WBVar02077968	20400071	20400345	-275
V	JU258	WBVar00091266	1362887	1363777	-891	MY14	WBVar02076266	1362958	1363099	-142
X	JU258	WBVar02075324	14442575	14442688	-114	MY14	WBVar02013883	14442604	14442657	-54
I	MY16	WBVar01992884	1061360	1061413	-54	ED3049	WBVar02076689	1061360	1061476	-117
I	MY16	WBVar02078014	1912482	1912810	-329	ED3049	WBVar02001378	1913065	1913132	-68
I	MY16	WBVar02102873	1946349	1946417	-69	ED3049	WBVar02077028	1946965	1947173	-209
II	ED3049	WBVar02076586	13423586	13423865	-280	MY16	WBVar02076752	13422858	13422997	-140
II	ED3049	WBVar02075226	2257896	2258154	-259	MY16	WBVar01918534	2257263	2257318	-56
III	ED3049	WBVar02019429	11926136	11926207	-72	MY16	WBVar02075261	11925619	11926290	-672
III	MY16	WBVar02077759	1348972	1349175	-204	ED3049	WBVar01964558	1348973	1349040	-68
IV	MY16	WBVar02118974	2283020	2283105	-86	ED3049	WBVar02076821	2283173	2283338	-166

IV	ED3049	WBVar02077777	3063758	3064006	-249	MY16	WBVar01922449	3063393	3063444	-52
IV	ED3049	WBVar02008820	5284653	5284704	-52	MY16	WBVar01940743	5284617	5284720	-104
V	ED3049	WBVar02077950	19820824	19821016	-193	MY16	WBVar01941014	19820220	19820306	-87
V	MY16	WBVar02077950	19820824	19821016	-193	ED3049	WBVar01941017	19821358	19821414	-57
V	MY16	WBVar02077960	20069103	20069326	-224	ED3049	WBVar02075305	20069425	20069554	-130
V	MY16	WBVar02077960	20069103	20069326	-224	ED3049	WBVar01941130	20069954	20070004	-51
V	ED3049	WBVar02079743	8924943	8925150	-208	MY16	WBVar01927801	8924566	8924621	-56
X	ED3049	WBVar02047840	15733344	15733400	-57	MY16	WBVar02074961	15732427	15732601	-175
I	CB4856	WBVar01408978	1746799	1747040	-242	MY1	WBVar01931067	1746808	1746912	-105
I	MY1	WBVar02075713	1938077	1938216	-140	CB4856	WBVar01931219	1937815	1937883	-69
I	MY1	WBVar01957930	11813571	11813643	-73	CB4856	WBVar02076716	11813131	11813671	-541
I	CB4856	WBVar02075774	12851998	12852111	-114	MY1	WBVar02076730	12852174	12852479	-306
I	MY1	WBVar01949923	13412239	13412295	-57	CB4856	WBVar02075377	13412145	13412301	-157
II	MY1	WBVar02075204	14189012	14189177	-166	CB4856	WBVar01994462	14188437	14188536	-100
II	MY1	WBVar02075886	35019	35252	-234	CB4856	WBVar02079558	34997	35293	-297
III	MY1	WBVar02074679	912940	913132	-193	CB4856	WBVar01983513	912723	912784	-62
III	MY1	WBVar02075898	923023	923134	-112	CB4856	WBVar01983515	922832	922890	-59
III	CB4856	WBVar01963266	11311160	11311213	-54	MY1	WBVar01995831	11311884	11311987	-104
III	CB4856	WBVar01953182	12400858	12400921	-64	MY1	WBVar02075269	12400937	12401071	-135
III	MY1	WBVar02075648	12414603	12414778	-176	CB4856	WBVar02081899	12414374	12414443	-70
III	MY1	WBVar02075943	12631521	12631658	-138	CB4856	WBVar02075275	12630976	12631368	-393
III	MY1	WBVar02076046	15854160	15854291	-132	CB4856	WBVar02069958	15853732	15853785	-54
IV	CB4856	WBVar02076056	16427960	16428159	-200	MY1	WBVar01969798	16428994	16429064	-71
IV	MY1	WBVar02076232	19725689	19725850	-162	CB4856	WBVar02074913	19725512	19725618	-107
V	MY1	WBVar01978616	20491400	20491484	-85	CB4856	WBVar02075312	20490869	20491226	-358
V	MY1	WBVar02076309	10973749	10974537	-789	CB4856	WBVar02076308	10973616	10974483	-868
X	MY1	WBVar02076309	10973749	10974537	-789	CB4856	WBVar02079628	10973697	10974537	-841
I	CB4856	WBVar01932256	4056394	4056447	-54	JU258	WBVar02078460	4056495	4056674	-180
I	JU258	WBVar01957930	11813571	11813643	-73	CB4856	WBVar02076716	11813131	11813671	-541
I	CB4856	WBVar02075774	12851998	12852111	-114	JU258	WBVar02076730	12852174	12852479	-306
I	JU258	WBVar02075795	681454	682030	-577	CB4856	WBVar02006567	681267	681340	-74
II	CB4856	WBVar00091051	1256637	1256810	-174	JU258	WBVar02040112	1256729	1256805	-77
II	JU258	WBVar02075828	2793398	2793678	-281	CB4856	WBVar01982326	2792644	2792695	-52
II	JU258	WBVar01959583	2883346	2883407	-62	CB4856	WBVar02078482	2882236	2882405	-170

II	JU258	WBVar00091075	3895855	3896058	-204	CB4856	WBVar00091196	3894864	3895646	-783
II	JU258	WBVar01265585	14158590	14158845	-256	CB4856	WBVar02040912	14158325	14158408	-84
II	JU258	WBVar02075908	2004875	2005185	-311	CB4856	WBVar01918416	2004357	2004446	-90
III	JU258	WBVar01951713	2364306	2364372	-67	CB4856	WBVar02077242	2363451	2363645	-195
III	CB4856	WBVar01962383	2881371	2881439	-69	JU258	WBVar02078118	2881935	2882147	-213
III	CB4856	WBVar01963776	12278589	12278647	-59	JU258	WBVar01402105	12279330	12279633	-304
III	CB4856	WBVar02075956	1859937	1860202	-266	JU258	WBVar02077765	1860353	1860722	-370
IV	CB4856	WBVar00091094	2058231	2058604	-374	JU258	WBVar01965042	2058358	2058450	-93
IV	CB4856	WBVar01921605	2156600	2156662	-63	JU258	WBVar02078535	2156995	2157120	-126
IV	CB4856	WBVar02075983	3455215	3455348	-134	JU258	WBVar02076830	3455443	3456024	-582
IV	JU258	WBVar02074816	4335709	4335950	-242	CB4856	WBVar01923176	4335058	4335111	-54
IV	JU258	WBVar01968477	14758248	14758310	-63	CB4856	WBVar02078396	14757296	14757411	-116
IV	JU258	WBVar02076232	19725689	19725850	-162	CB4856	WBVar02074913	19725512	19725618	-107
V	JU258	WBVar01978616	20491400	20491484	-85	CB4856	WBVar02075312	20490869	20491226	-358
V	JU258	WBVar02076266	1362958	1363099	-142	CB4856	WBVar00091266	1362887	1363777	-891
X	JU258	WBVar02076309	10973749	10974537	-789	CB4856	WBVar02076308	10973616	10974483	-868

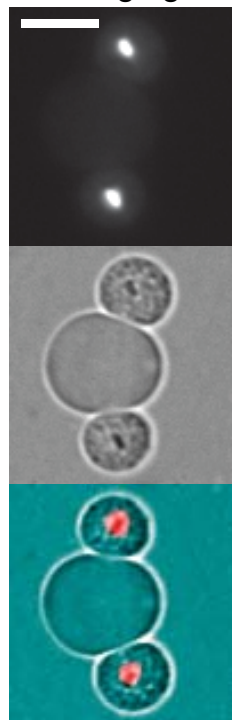


B Attached budding figure



35/36 MII anaphase
leave no DNA in the
residual body

B Separated budding figure



17/17 MII anaphase
leave no DNA in
the residual body

C



1/53 MII anaphase
leave DNA in the
residual body

Figure S1. Correction of triploidy is rarely observed during spermatocyte meiosis. Shown in (A) is a depiction of spermatogenesis. The first meiotic division yields two secondary spermatocytes which can either be separated or remain attached. Secondary spermatocytes undergo a budding division during which haploid spermatids separate from a residual body. (B) DAPI and DIC images of budding figures from male triploid *C. elegans* with no DNA in the residual body. (C) Budding figure from male triploid *C. elegans* which appears to have DNA in the residual body. Bars equal 5 μ m. Red arrow indicates DNA in the residual body.

A**Primers**

Chromosome	Forward (5'->3')	Reverse (5'->3')	Strains	Products
I	CCACCATGTTCTTTGGAGTGC	ATTGCGGCTAAAGGTTTGTGG	N2/4N AB3 ED3049	748bp 504bp 632bp
II (a)	AGAAGCGGGTTTAACCTACCA	ACTTTCTAAAGTGAAATAGCGGGTA	N2/4N MY2 JU258	819bp 690bp 751bp
II (b) #1	GACGGGGGTTGGAGATGATG	TTCTTCTCGAGGCCACTTGC	N2/4N CB4856 JU258	507bp 333bp 430bp
II (b) #2	GCTACCGACTTCACAACGGA	CGTGACCGGACACTGGATAG	N2/4N CB4856 JU258	618bp 444bp 541bp
III	CCCGCTTACGAGTCCAAGG	ATGGGGCAGCGAGTCAAAA	N2/4N AB3 ED3049	722bp 576bp 663bp
IV	CGGAAATTGTAGGCCGCAGTA	TTTCAGTCCTTCAGATCACTCGT	N2/4N MY2 JU258	878bp 822bp 755bp
V #1	AGGAGAAAATTCTGCGTCAATGG	GAGGTTTTGGAGCAGCTAGGA	N2/4N CB4856 JU258	756bp 487bp 649bp
V #2	GGAGAAAATTCTGCGTCAATGGA	GTTTGGAGGTTTTGGAGCAGC	N2/4N CB4856 JU258	760bp 491bp 653bp

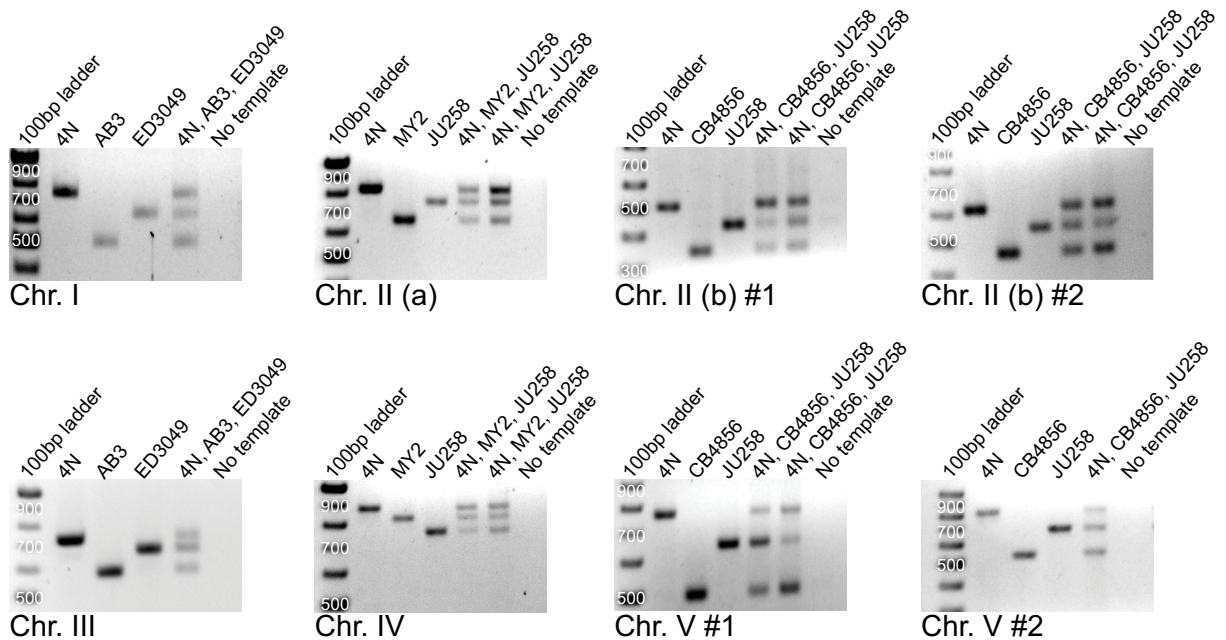
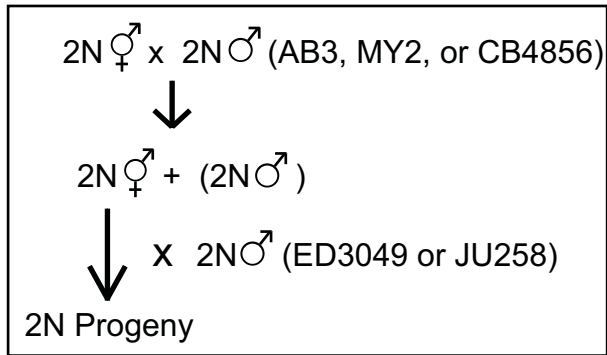
B

Figure S2. (A) Primers used for tracking polymorphisms in 3N x 2N crosses. (B) PCR results are shown for all primer pairs utilized.

Diploid Cross



	Chromosome						
Genotype	I	II a	II b	II	III	IV	V
AC	26	20	23	43	24	17	24
BC	20	18	24	42	22	21	23
Total	46	38	47	85	46	38	47

Figure. S3: Polymorphisms segregate in a Mendelian fashion in diploid crosses. N2 diploid hermaphrodites were mated with males of the listed polymorphic strains. The heterozygous hermaphrodite progeny were then mated with males of a second polymorphic strain. Genotypes of the progeny show that none of the polymorphism exhibit segregation bias.

Control crosses

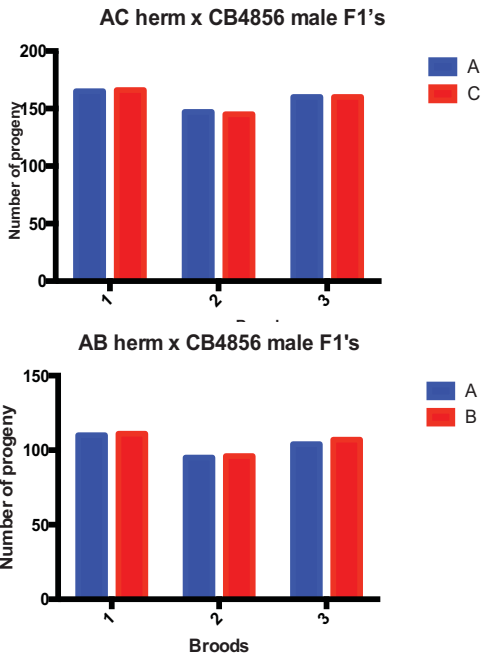


Figure S4. Transgenes used to generate the trisomy IV worms do not cause segregation bias. Results from diploid hermaphrodites containing markers A and C, or markers A and B, crossed with CB4856. Equal frequencies of the markers were observed in the F1's. This control shows that there is Mendelian inheritance of the 3 different transgenes in diploid worms.