

The EphB6 receptor is overexpressed in pediatric T cell acute lymphoblastic leukemia and increases its sensitivity to doxorubicin treatment

Amr El Zawily, Emily McEwen, Behzad Toosi, Frederick S. Vizeacoumar, Tanya Freywald, Franco J. Vizeacoumar, and Andrew Freywald

Supplementary Figure Legends

Supplementary Figure 1

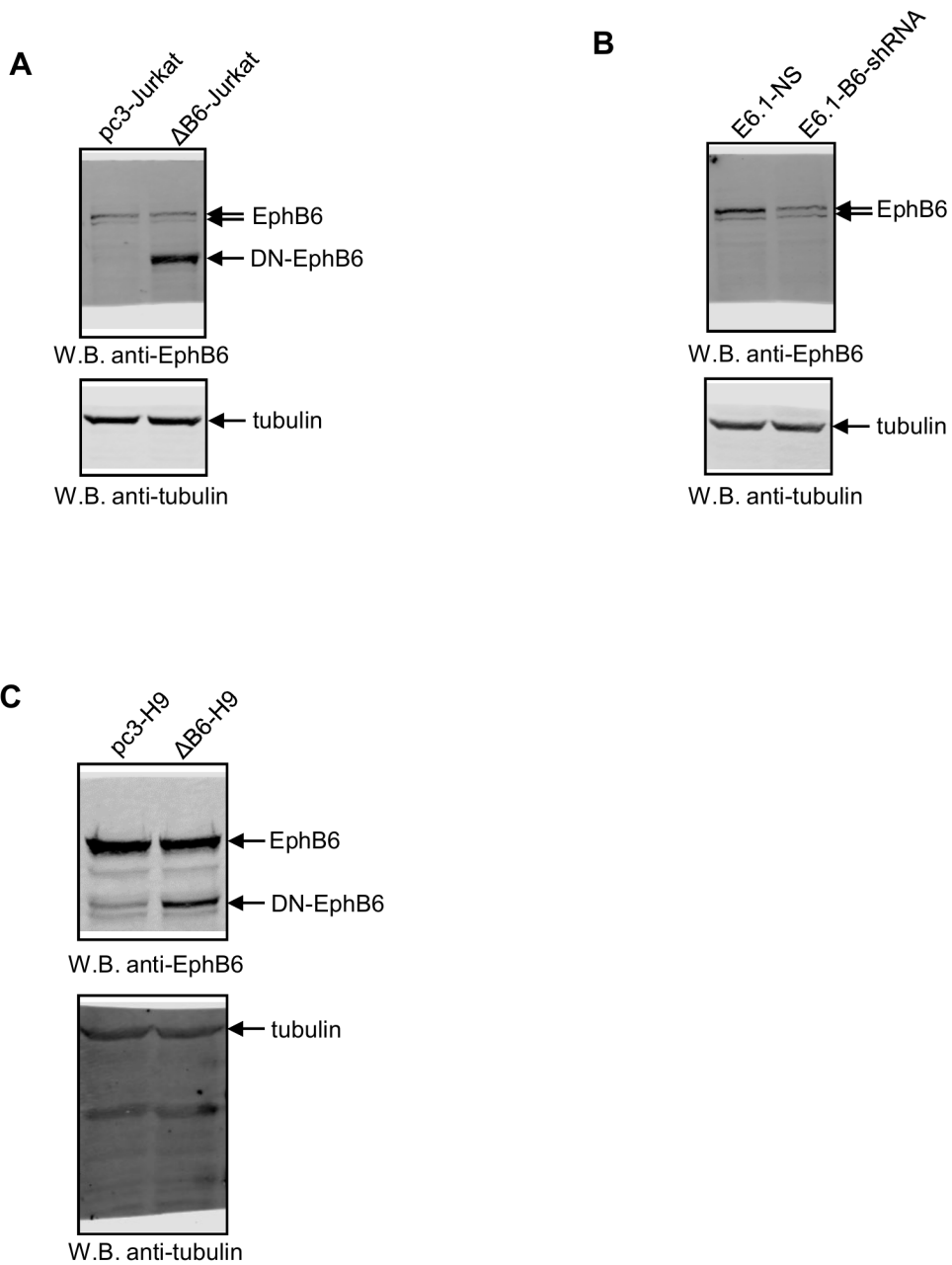
- A. Full- length unadjusted images of Western blots shown in Figure 2A
- B. Full- length unadjusted images of Western blots shown in Figure 2C
- C. Full- length unadjusted images of Western blots shown in Figure 2E

Supplementary Figure 2

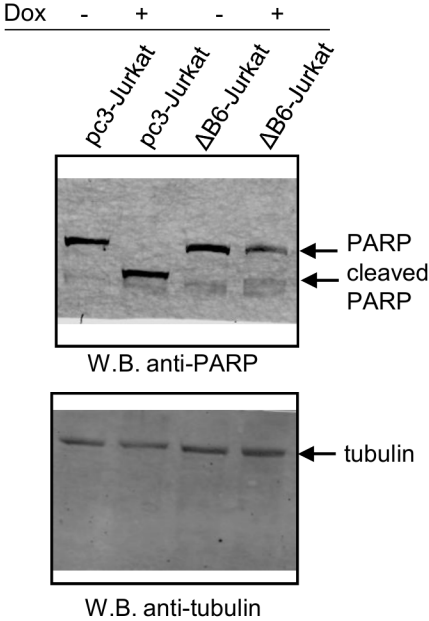
- A. Full- length unadjusted images of Western blots shown in Figure 3C

Supplementary Figure 3

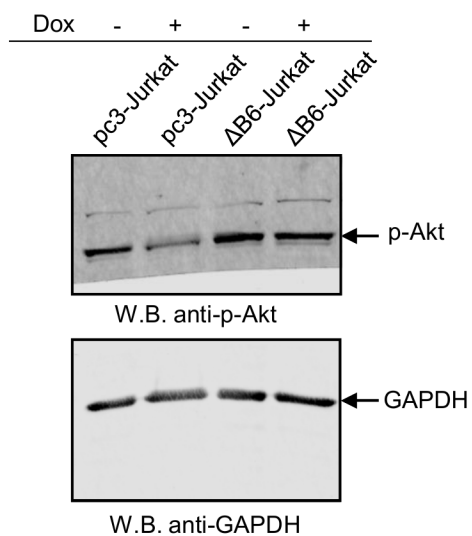
- A. Full- length unadjusted images of Western blots shown in Figure 4A
- B. Full- length unadjusted images of Western blots shown in Figure 4B
- C. Full- length unadjusted images of Western blots shown in Figure 4C



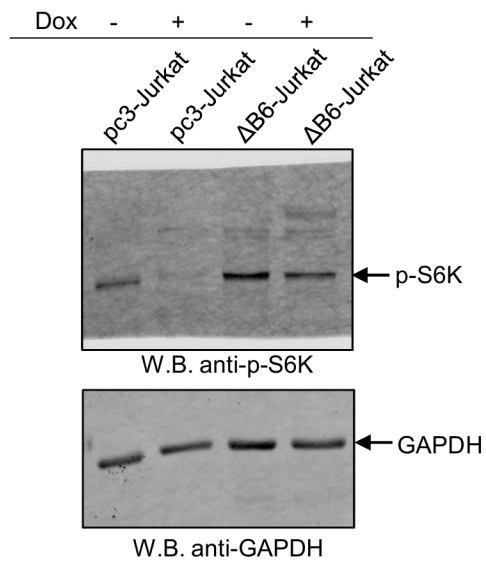
A



A



B



C

