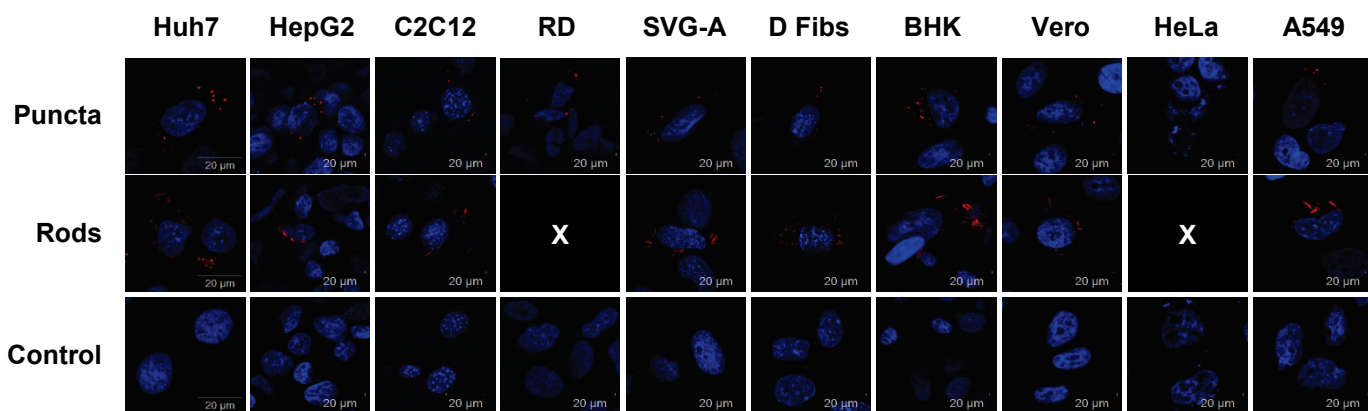


# **Evaluation of a range of mammalian and mosquito cell lines for use in Chikungunya virus research.**

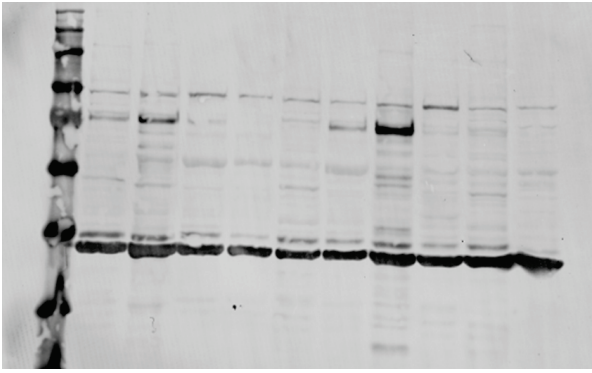
Grace Roberts, Carsten Zothner, Roland Remenyi, Andres Merits, Nicola J. Stonehouse and Mark Harris

Supplementary Information



**Figure S1. Localisation of mCherry-tagged-nsP3 in 10 mammalian cell lines.** Mammalian cell lines were transfected with nsP3-mCherry/SG-Gluc replicon RNA using Lipofectamine 2000. Two defined species of nsP3 structures were observed: puncta and rods. Spaces with an "x" indicate that that particular nsP3 structure was not observed for that cell line.

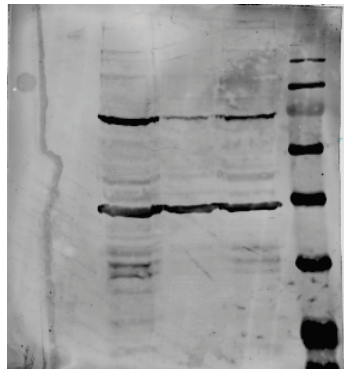
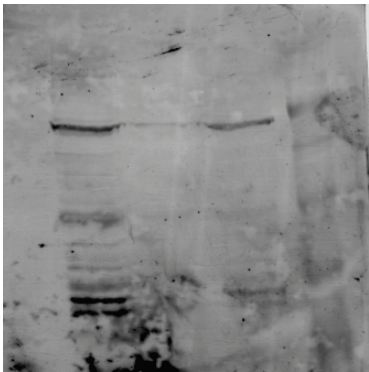
**Fig S2: Full length western blot images**



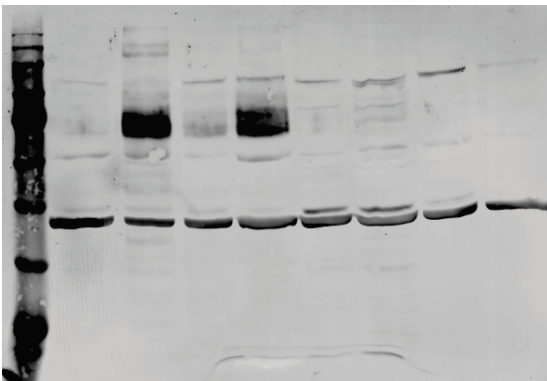
**Fig 1d**



**Fig 3b**



**Fig 4b**



**Fig 5b**