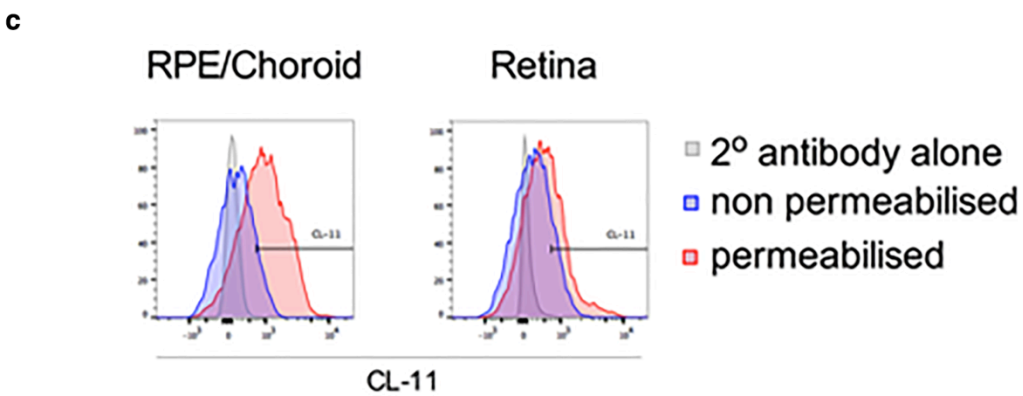
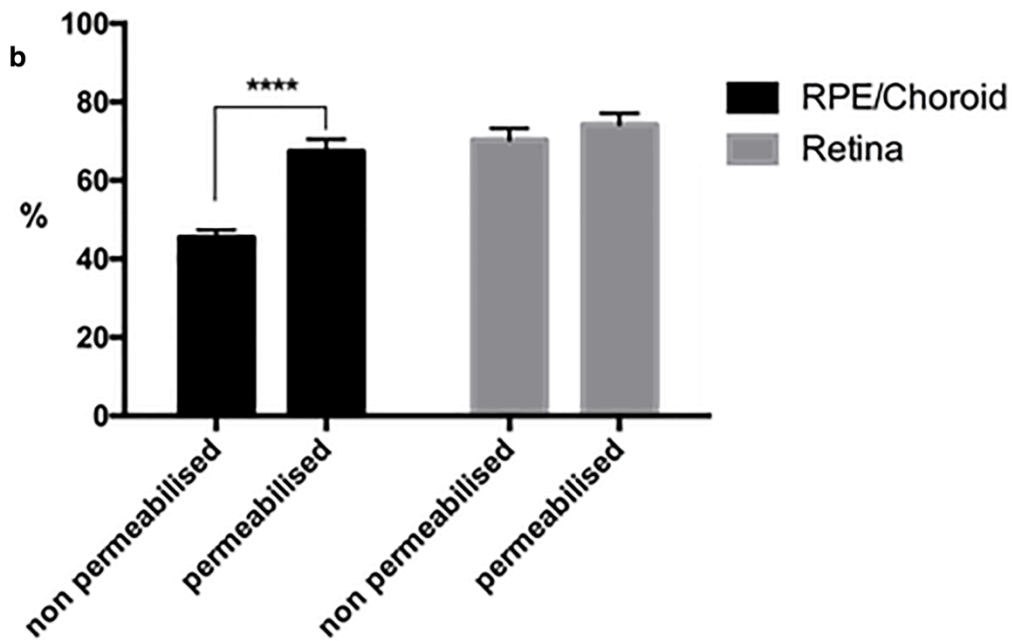
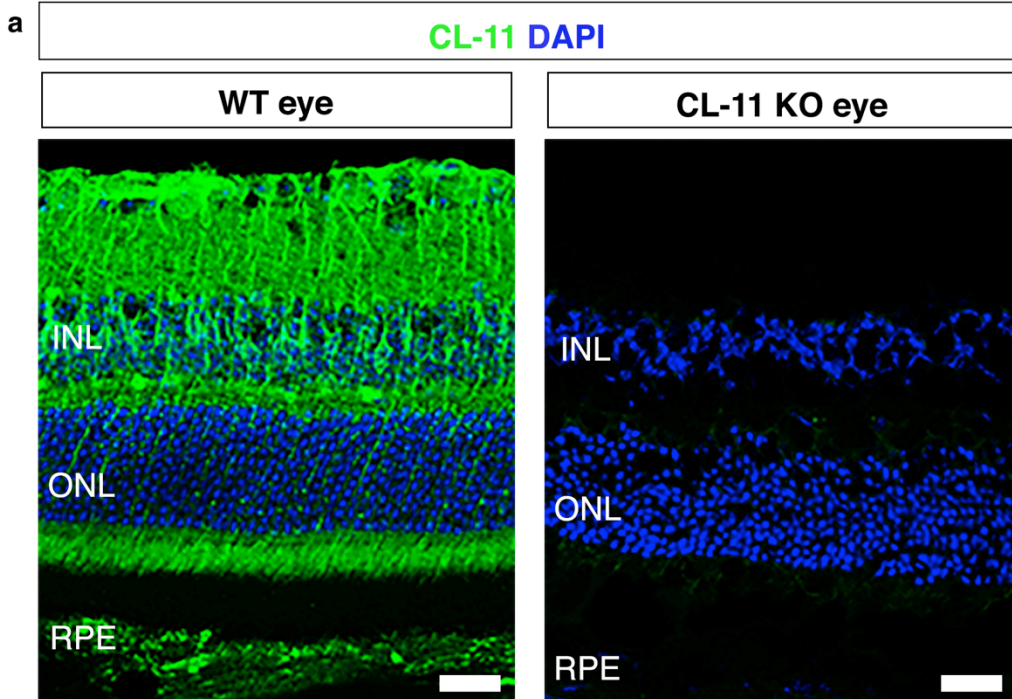


## **Supplementary data**

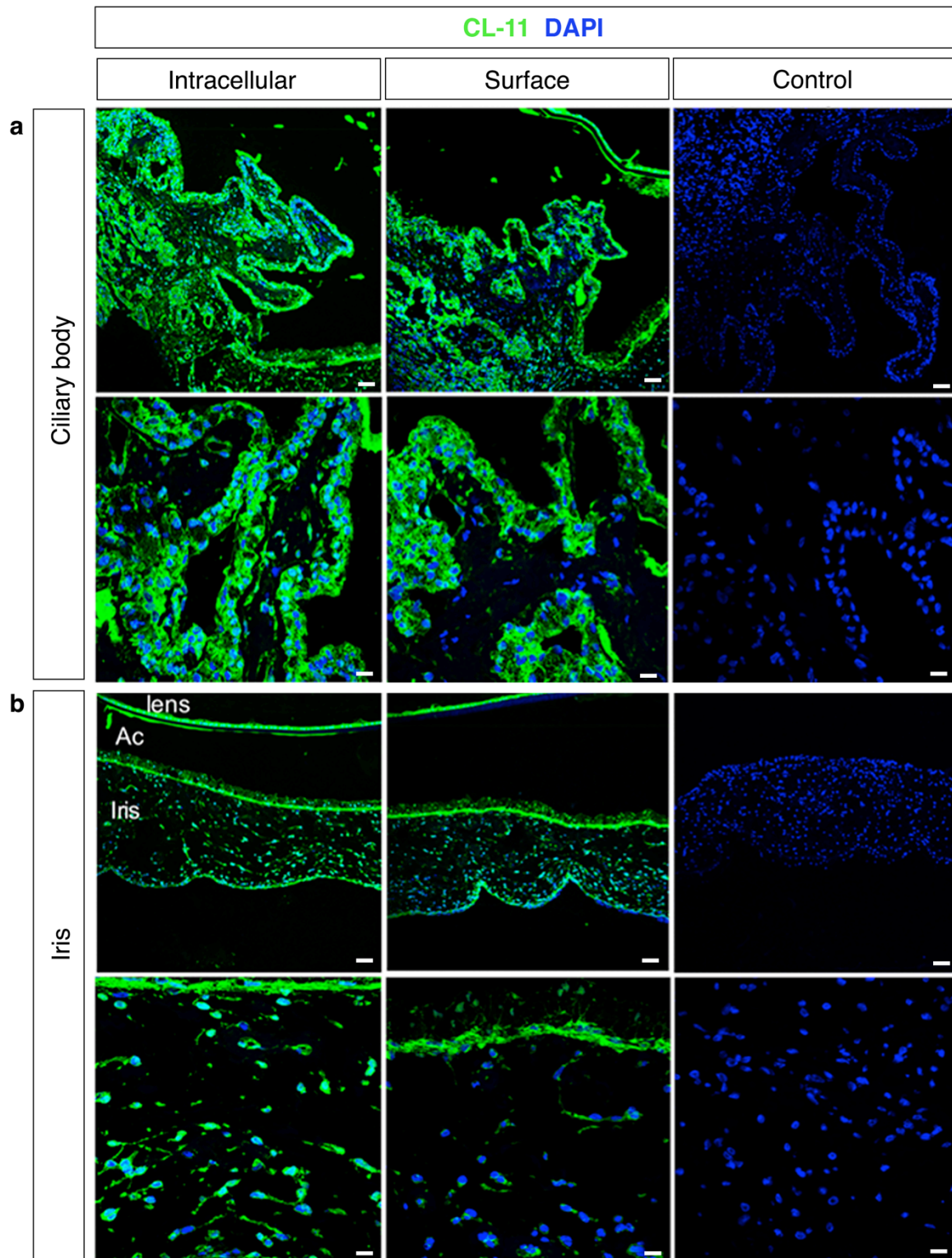
### **Human stem cell-derived retinal epithelial cells activate complement via collectin 11 in response to stress**

Giorgia Fanelli<sup>1</sup>; Anai Gonzalez-Cordero<sup>2,4</sup>; Peter J Gardner<sup>2,4</sup>; Qi Peng<sup>1</sup>; Milan Fernando<sup>2</sup>;  
Magdalena Kloc<sup>2</sup>; Conrad A. Farrar<sup>1</sup>; Arifa Naeem<sup>2</sup>; Peter Garred<sup>3</sup>; Robin R. Ali<sup>2</sup> and  
Steven H. Sacks<sup>1\*</sup>.



**Supplemental Figure 1. Detection of CL-11 expression in mouse retinal sections.**

(a) Representative confocal image of CL-11 staining (green) in retinal sections from *Colec11*<sup>+/+</sup> and *Colec11*<sup>-/-</sup> mouse eye. Scale bars, 25  $\mu$ m. (b) Quantification of CL-11 expression on permeabilised primary mouse RPE and RPE/Choroid s cells versus non-permeabilised cells. \*\*\*\*  $P < 0,001$ , *t*-test. (c) Representative flow cytometry histograms showing CL-11 expression on permeabilised (intracellular) versus non-permeabilised (surface) primary mouse Retina and RPE/Choroid cells. Cells stained with secondary antibody alone were used as control.



**Supplemental Figure 2. CL-11 expression in human eye.** Representative confocal image of human eye sections showing intracellular and surface expression of CL-11 in the ciliary body (a) and iris (b). Control sections were incubated with no primary antibody. Scale bars, 25  $\mu\text{m}$ .

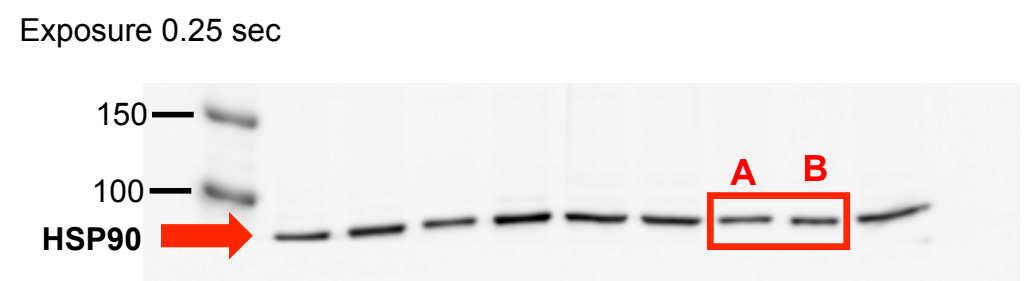
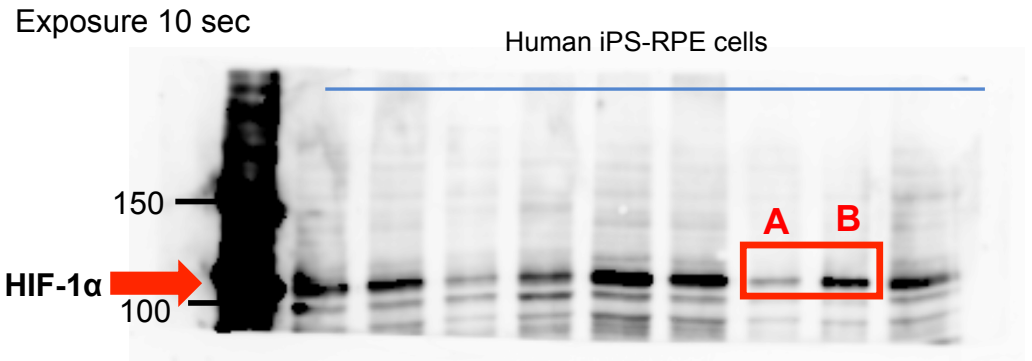
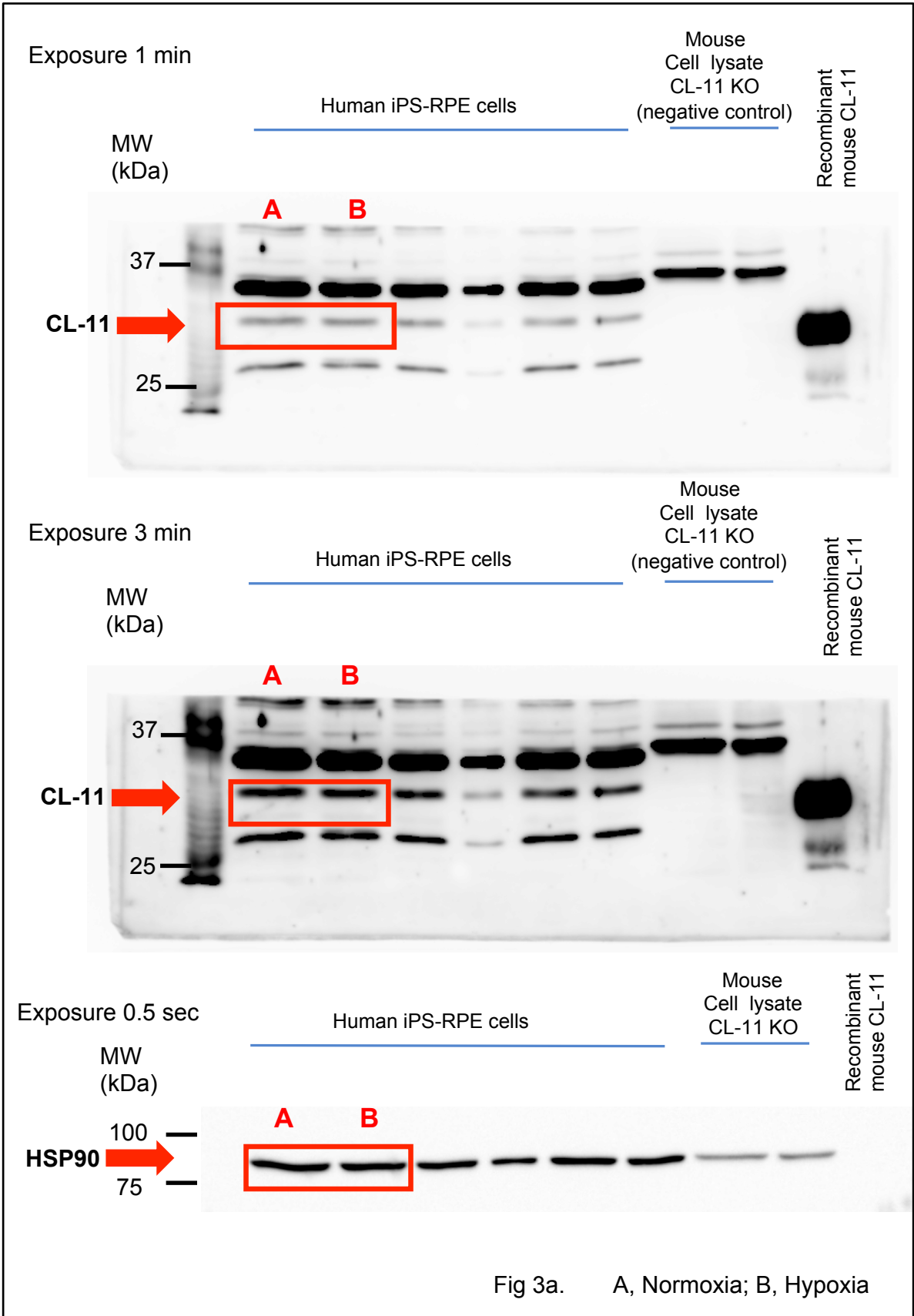
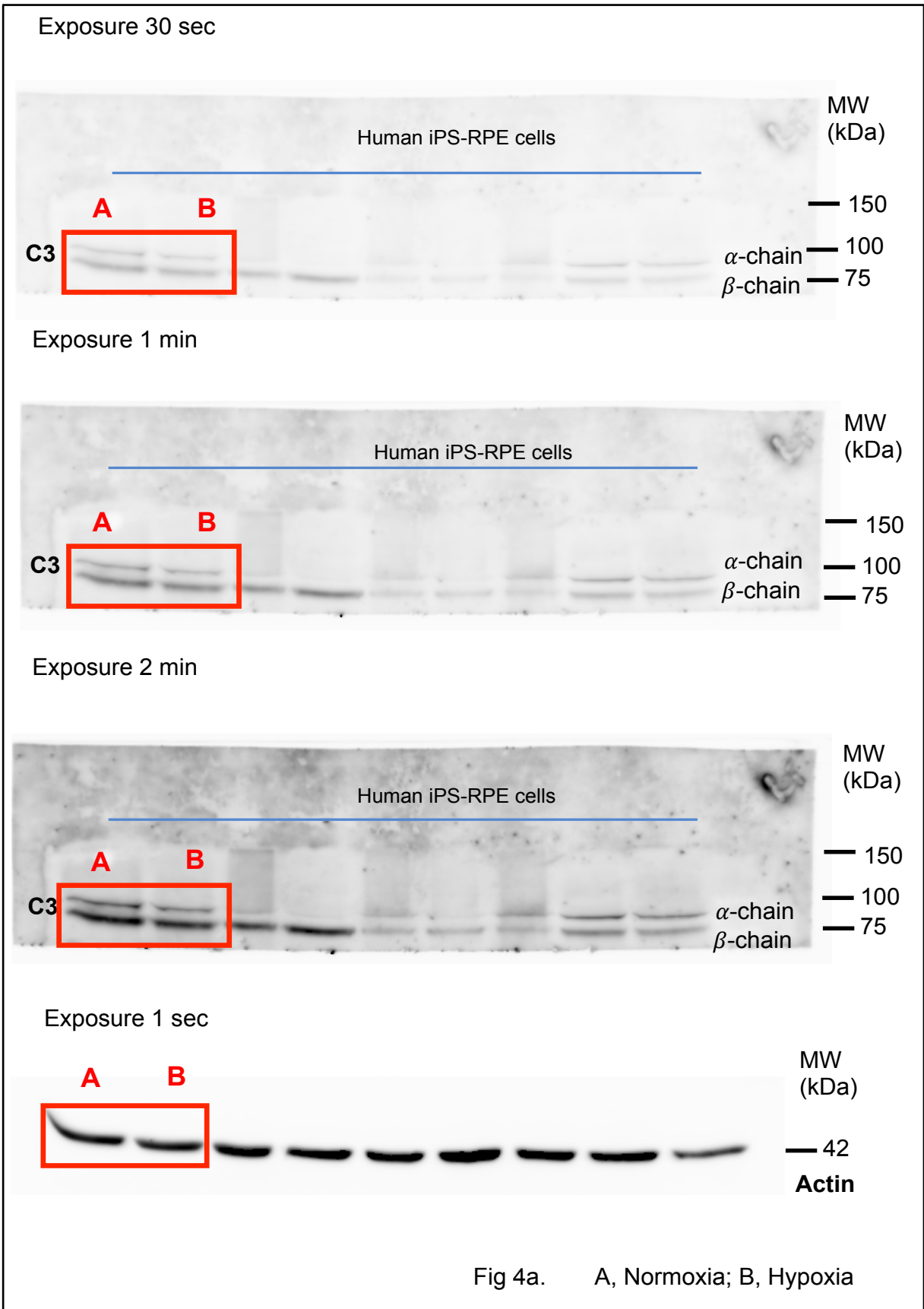


Fig 2c. A, Normoxia; B, Hypoxia

**Supplemental Figure 3.** Representative full blots of HIF-1 $\alpha$  quantification shown in the main figure of the manuscript. The respective figure is indicated

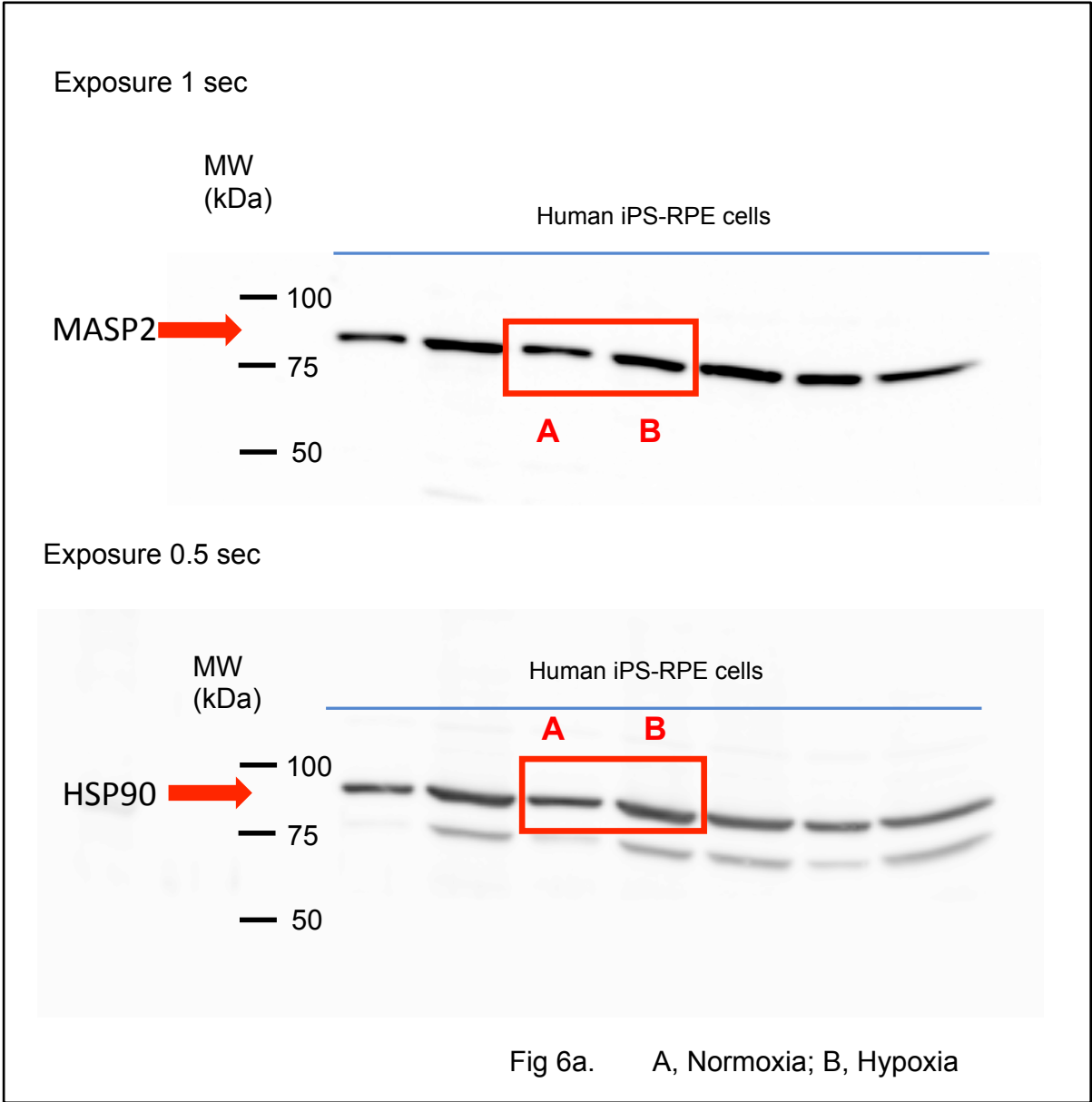


**Supplemental Figure 4.** Full blots of Immunoblots shown in the main figure of the manuscript. The respective figure is indicated



**Supplemental Figure 5.** Full blots of Immunoblots shown in the main figure of the manuscript. The respective figure is indicated





**Supplemental Figure 6.** Full blots of Immunoblots shown in the main figure of the manuscript. The respective figures is indicated