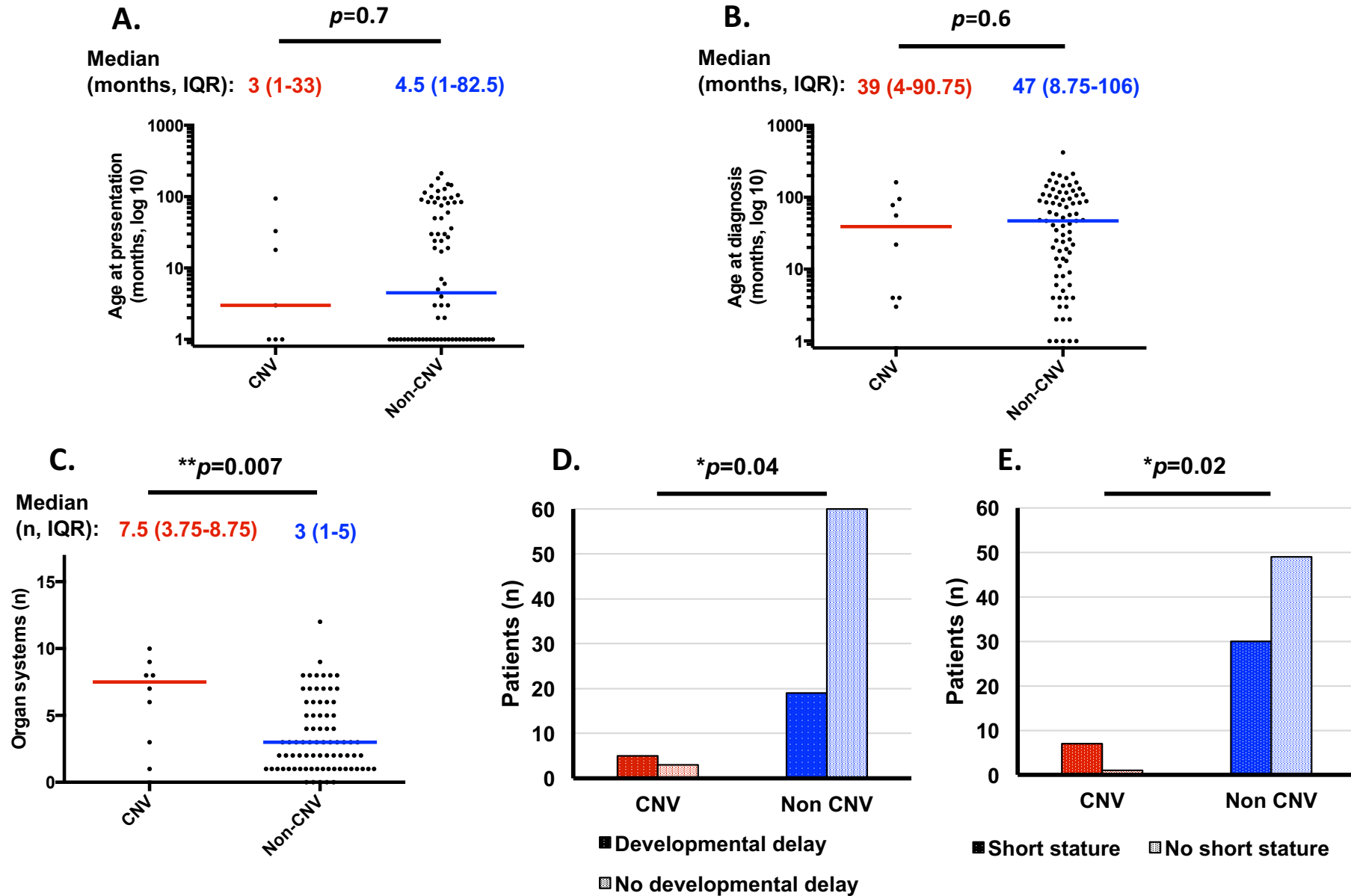


Supplementary Figures

Copy number variants underlying inherited bone marrow failure syndromes

Nicolas Waespe, Santhosh Dhanraj, Manju Wahala, Elena Tsangaris, Tom Enbar, Bozana Zlateska, Hongbing Li, Robert J. Klaassen, Conrad V. Fernandez, Geoff D. E. Cuvelier, John K. Wu, Yves D. Pastore, Mariana Silva, Jeffrey H. Lipton, José Brossard, Bruno Michon, Sharon Abish, MacGregor Steele, Roona Sinha, Mark J. Belletrutti, Vicky R. Breakey, Lawrence Jardine, Lisa Goodyear, Liat Kofler, Michaela Cada, Lillian Sung, Mary Shago, Stephen W. Scherer, and Yigal Dror.

Supplementary Figure 1: Analysis of clinical parameters including only patients with at least 5 patients in every IBMFS and at least one case with CNVs; grouped by cases with CNVs versus other mutations. A. Age at presentation, color bars representing corresponding median; B. Age at diagnosis, color bars representing corresponding median; C. Non-hematological organ system involvement, color bars representing corresponding median; D. Developmental delay; E. Short stature.



Supplementary Figure 2: Analysis of clinical parameters including only patients with at least 5 patients in every IBMFS and at least one case with CNVs; grouped by cases with CNVs versus other mutations. A. Age at onset of severe cytopenias; B. Overall survival.

