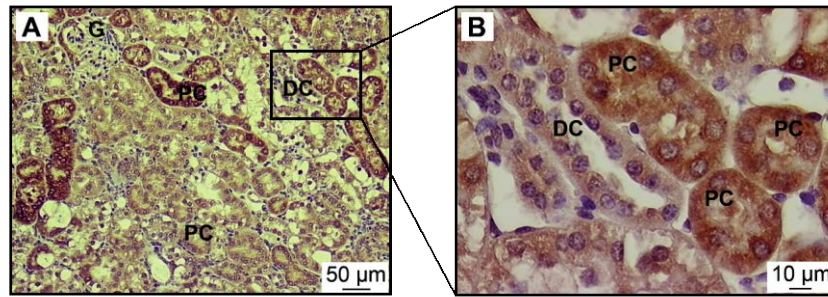


Supplemental Table 1. Oligodeoxyribonucleotide primer sequences for qPCR

Name of gene	Forward sequence	Reverse sequence
Acaca	TGGCAGACCACTATGTTCCA	GAGCAGTTCTGGGAGTTTCG
Agt	TTCACTGCTCCAGGCTTTCGTCTA	TTCTCAGTGGCAAGAACTGGGTCA
aSma	GTCCCAGACATCAGGGAGTAA	TCGGATACTTCAGCGTCAGGA
Cdh1	CTCCAGTCATAGGGAGCTGTC	TCTTCTGAGACCTGGGTACAC
Chrebp	CTG GGG ACC TAA ACA GGA GC	GAA GCC ACC CTA TAG CTC CC
Ctnnb1	GTGCAATTCCTGAGCTGACA	CTTAAAGATGGCCAGCAAGC
Fasn	TTCCAAGACGAAAATGATGC	AATTGTGGGATCAGGAGAGC
Fibronectin	TGGCTGCCTTCAACTTCTCCT	TGTTTGATCTGGACTGGCAGTTT
Hmgcr	TCTGTTGTGAACCATGTGACTTC	AGCTTGCCCGAATTGTATGTG
Hmgcs2	CCGTATGGGCTTCTGTTTCCAG	AGCTTTGTGCGTTCCATCAG
L19	AGAAGATTGACCGCCATAT	TTCGTGCTTCCTTGGTCTTAGA
Nphs2	GGGCATCAAAGTGGAGAGAACTG	TGGACAGCGACTGAAGAGTGTG
Pai1	TTCAGCCCTTGCTTGCCTC	ACACTTTTACTCCGAAGTCGGT
Podxl	GAGCACAGCGAGCCATCC	GTGGAGACGGGCAATGTAG
Scd1	TGGGTTGGCTGCTTGTG	GCGTGGGCAGGATGAAG
Srebf1	GGCACTAAGTGCCCTCAACCT	GCCACATAGATCTCTGCCAGTGT
Srebf2	GCAGCAACGGGACCATTCT	CCCCATGACTAAGTCCTTCAACT
Synpo	CATCGGACCTTCTTCCCTGTG	TCGGAGTCTGTGGGTGAG
Tgfb1	CAACAATTCCTGGCGTTACCTTGG	GAAAGCCCTGTATTCCGTCTCCTT
Tnf	AGGCTGCCCCGACTACGT	GACTTTCTCCTGGTATGAGATAGCAAA
Vim	CGGCTGCGAGAGAAATTGC	CCACTTTCGGTTCAAGGTCAAG
Zo1	GCCGCTAAGAGCACAGCAA	TCCCCACTCTGAAAATGAGGA



Supplemental Figure 1: Identification of G6PC positive cells in K-G6pc^{-/-} kidneys.

A-B. Immunohistochemical analyses of G6PC in the kidneys of K-G6pc^{-/-} mice. Panel B corresponds to a higher magnification of the G6PC positive cells observed in panel A. The G6PC positive cells were identified as proximal convoluted tubules by the presence of brush border that reduces the luminal space of the tubule. G: glomeruli, DC: distal convoluted tubules, PC: proximal convoluted tubules.