

SUPPLEMENTAL MATERIAL

Cosway et al., <https://doi.org/10.1084/jem.20171000>

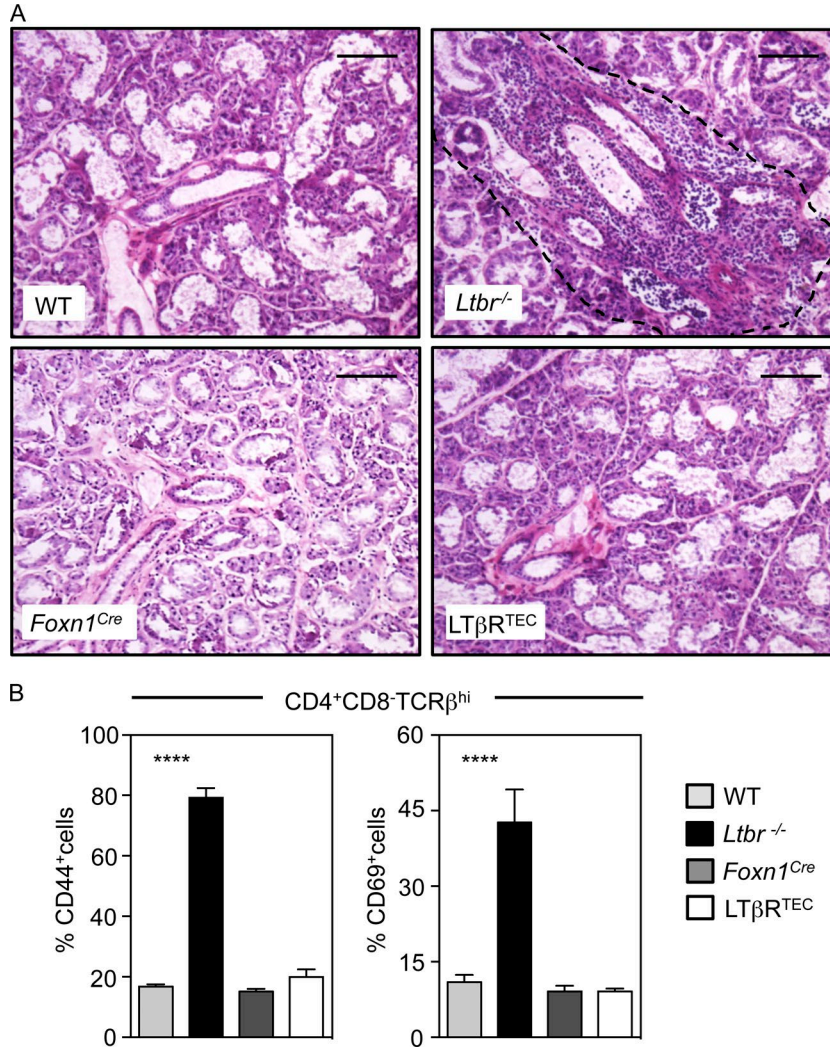


Figure S1. **Symptoms of autoimmunity in the salivary glands of germline *Ltbr*<sup>-/-</sup> mice but not LTβR<sup>TEC</sup> mice.** (A) Submandibular salivary gland sections from mice at 8–12 wk of age. Dotted lines indicate lymphocytic infiltrates. Bars, 100 μm. (B) Frequency of CD69<sup>+</sup> and CD44<sup>+</sup> activated CD4<sup>+</sup> αβT cells in digested salivary gland samples from the indicated mouse strains. Data represent two separate experiments, with a minimum of *n* = 6 mice. Error bars indicate SEM. \*\*\*\*, *P* < 0.0001.

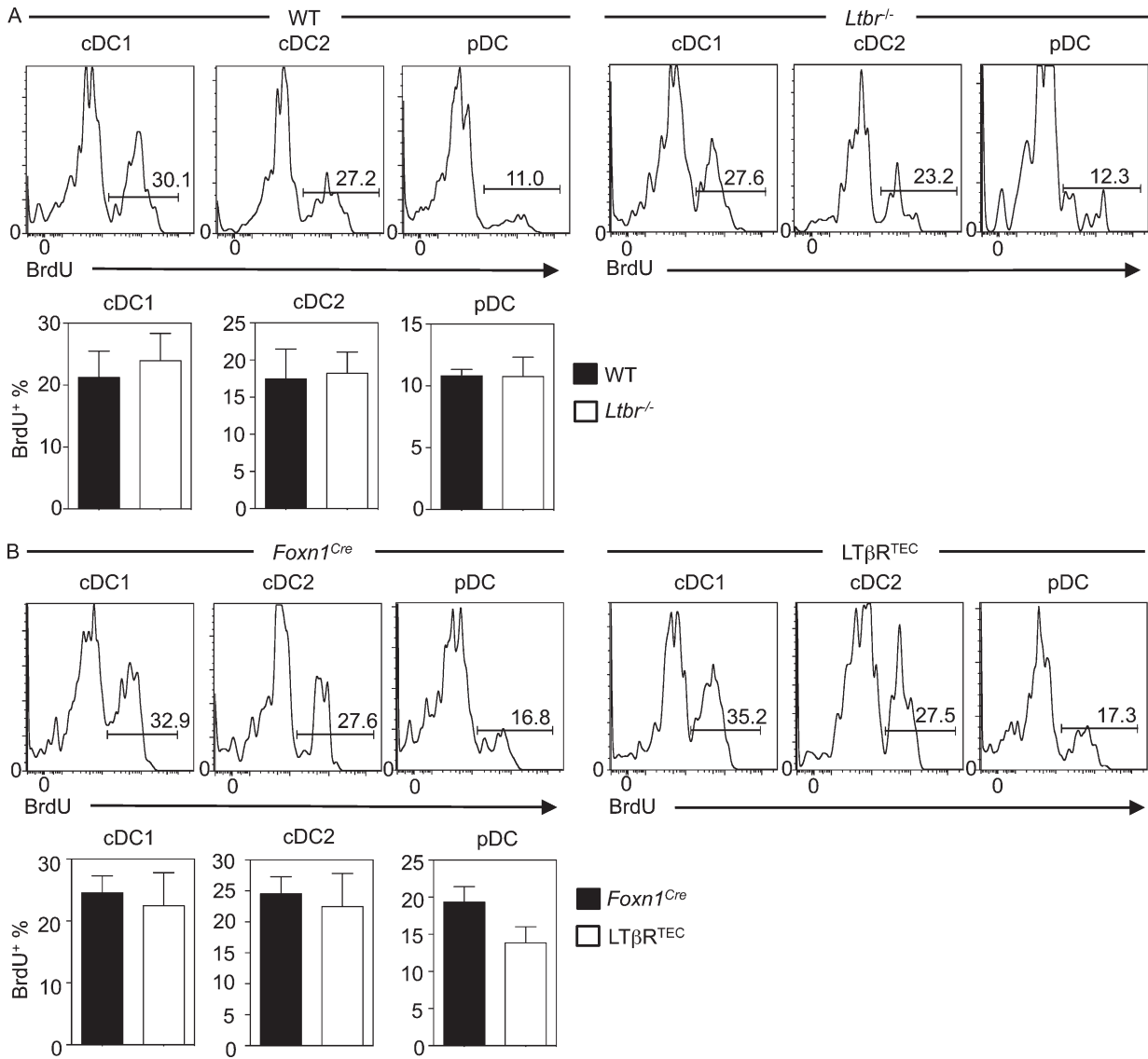
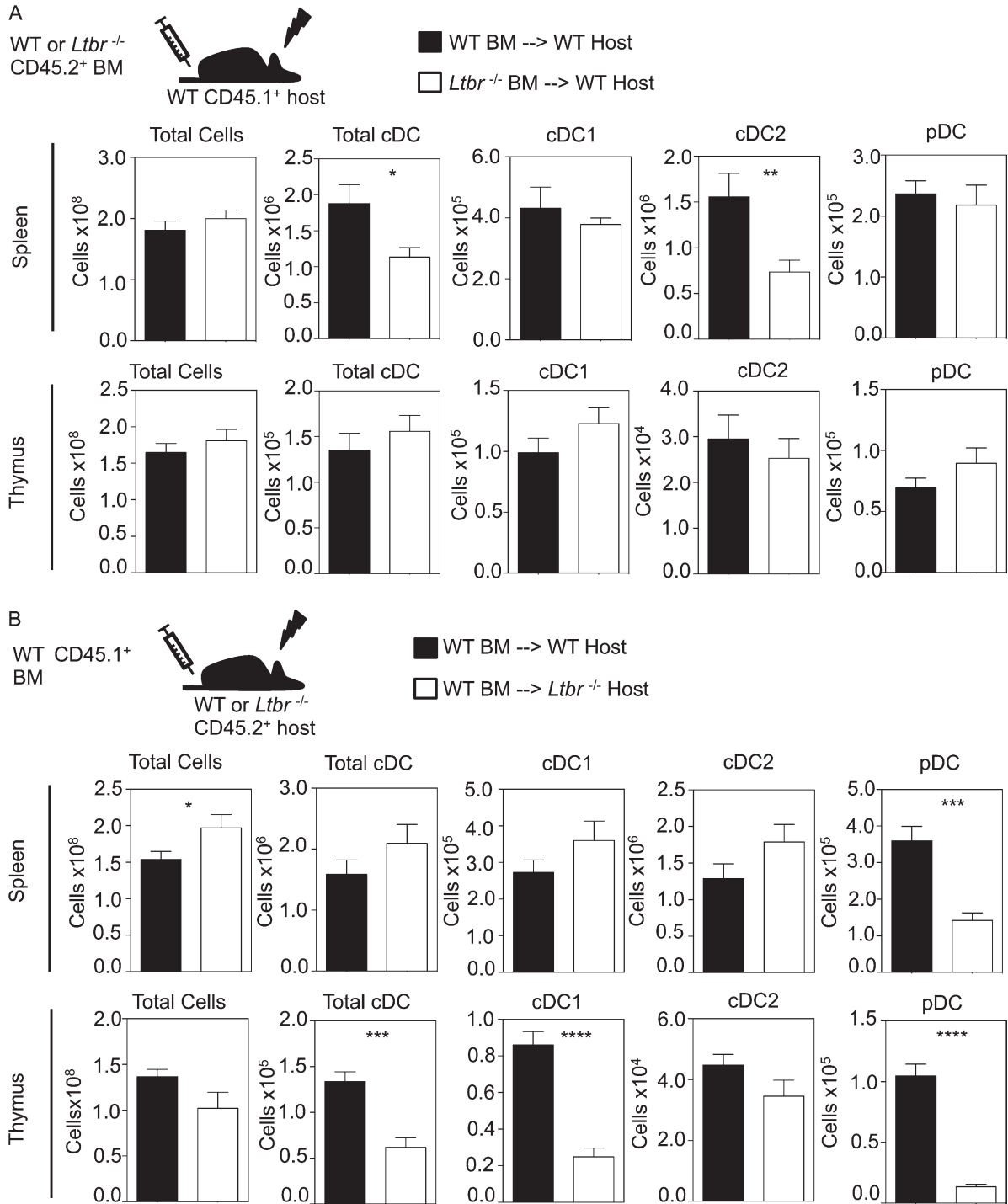


Figure S2. **Analysis of BrdU incorporation in thymic DCs.** BrdU incorporation in cDC1, cDC2, and pDC thymic populations from WT and *Ltbr*<sup>-/-</sup> mice (A) and *LTβR*<sup>TEC</sup> and *Foxn1*<sup>Cre</sup> mice (B), 18 h after i.p. BrdU injection. Data represent at least three separate experiments, with a minimum of *n* = 8 for each strain. Error bars represent SEM.



**Figure S3. LTβR expression by thymic stroma controls intrathymic DCs.** (A) Generation of BM chimeras with WT hosts lethally irradiated and reconstituted with WT (black bar) or *Ltbr*<sup>-/-</sup> (white bar) BM. Quantitation of DCs is shown for spleen and thymus. Data representative of at least *n* = 8. (B) Reverse chimeras were generated with WT or *Ltbr*<sup>-/-</sup> hosts lethally irradiated and reconstituted with WT BM. DC numbers in spleen and thymus are shown. Analysis was performed 8 wk after reconstitution. Data represent at least three independent experiments; minimum of *n* = 10. Error bars indicate SEM. \*, *P* < 0.05; \*\*, *P* < 0.01; \*\*\*, *P* < 0.001; \*\*\*\*, *P* < 0.0001.