

SUPPLEMENTAL MATERIAL

Martín-Gayo et al., <https://doi.org/10.1084/jem.20161564>

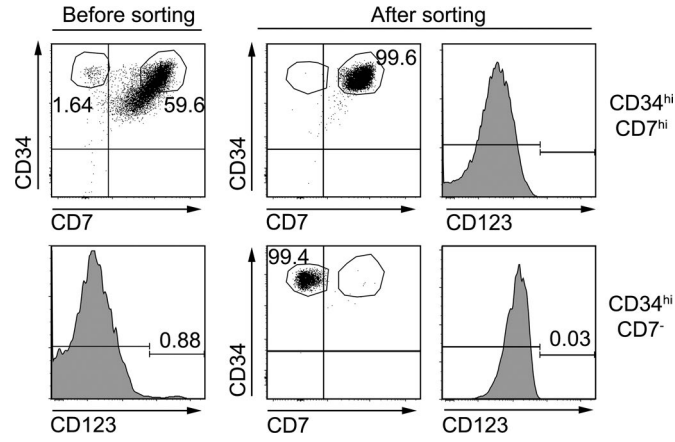


Figure S1. **Sorting strategy used to isolate CD7⁻ and CD7^{hi} ETPs depleted of CD123^{hi} cells.** Flow cytometry analysis of CD7, CD34, and CD123 expression on total ETPs isolated from the human postnatal thymus by magnetic selection using anti-CD34-coated beads (left histograms). Right histograms show the phenotype of CD7⁻ and CD7^{hi} FACS-sorted CD34^{hi} ETPs depleted CD123^{hi} cells.