

SUPPLEMENTAL MATERIAL

Table of Contents	Page
Supplementary Table S1: Primer sequences for all experiments	2
Supplementary Table S2: List of variants observed in targeted sequencing	4
Supplementary Table S3: Potentially deleterious variants in <i>PRRX1</i>	57
Supplementary Table S4: Regions tested for enhancer activity in zebrafish embryos	58
Supplementary Table S5: Prediction of altered transcription factor binding sites by JASPAR	59
Supplementary Figure S1: Principal components analysis of previously genotyped study samples	61
Supplementary Figure S2: <i>prrx1</i> knockdown morpholino efficacy and functional effects	62
Supplementary Figure S3: DNaseI hypersensitivity in hESC, HCM and HCF around the enhancer regions E and F	63
Supplementary Figure S4: Hi-C derived directionality ratios and virtual 3C	64
Supplementary Figure S5: Screening for a functional SNP within <i>PRRX1</i> promoter region	66
Supplementary Figure S6: Analysis of the effect of rs577676 on the enhancer function via serial deletions	67

Supplementary Table S1. Primer sequences

Primers for zebrafish data		
Primer name	Sequence (5' to 3')	
<i>prrx1a</i> E1I1 semi-qRT-PCR	GACTGGAGACTGCGATCACC AGCATCGCACGTTTCATTTCG	
<i>prrx1b</i> E1I1 semi-qRT-PCR	GGTCGGTTCTCAGGTGGATG CGCTTCCCAGGATAGGTAG	
<i>prrx1a</i> E3I3 semi-qRT-PCR	TTCAAAATCGACGGGCTAAG GGGACATTGGGATTGTTCTG	
<i>ef-1α</i> semi-qRT-PCR	AAGAGAACCATCGAGAAGTTTCG CTCAATCTTCCATCCCTTGAAC	
<i>eGFP</i> qRT-PCR	AAGTCGTGCTGCTTCATGTG ACGTAAACGGCCACAAGTTC	
<i>ef-1α</i> qRT-PCR	TTGAGAAGAAAATCGGTGGTGCTG GGAACGGTGTGATTGAGGGAAATTC	
<i>Beta-actin</i> qRT-PCR	CGAGCAGGAGATGGGAACC CAACGGAAACGCTCATTGC	
Primers for chromatin conformation capture		
Primer name	distance (kb)	Sequence (5' to 3')
anchor		AGTTGGTAAAACACAAAGTTCCAC
probe		6FAM-CATTGTGACGGCCCTCGGCAGG-TAMRA
self-loop		TTGAGTTCATCTTCAGGTTATACCA
Pr-1	-14.246	TTGATGTGGATCGGCAGTCTT
Pr-2	-11.484	TAGCTGGGACCATACGTTCCA
Pr-3	-6.426	CATTTGCTCATCTCTAAGGATTTTATT
Pr-4	-4.825	TCAAGCCTCAGTAATGATGGAC
Pr-5	-2.348	CCCAACCATGAGGATTTGAAGAT
Pr-6	1.265	CATTCCAGTGTGCATGGCAG
Pr-7	5.557	CTACAAGGCTTCTTGTAGAAATG
Pr-8	15.806	GGAAGCAAACACAGATCAAAGTC
Pr-9	18.165	CAATTTGGTGATACCTATAAACTTTC
Pr-10	26.681	CAAGATTTAAGTTCCTATGGCATAAC
Pr-11	30.22	CATTAGTAGGCATCCTTTTCTCATT
Pr-12	33.169	GGAAGCCACACTAATAGATGCAT
Pr-13	37.417	CATTTTTAAGCATCTAAGTTACATGC
Pr-14	38.163	CTGAGGCTTGGAGTGGTAAC
Pr-15	49.675	CAATTATCTCGTTGAAGAGGGGA
Pr-16	63.71	CTAACTATGTAGAGAGCAGGGT
Pr-17	65.798	CATGCAGAGAAGTTTAGTACTTG
Pr-18	87.599	GTGACCACCTACACTTCATGG

Pr-19	89.764	GTGAGAAATAATAGATCAGCTGAG
Pr-20	95.468	TGCAGAGCAGAAGAGGGTGA
Pr-21	99.068	TGCAGAGCAGAAGAGGGTGA
Pr-22	106.605	TTGGGAGATGGGGAATTTTCTTAAA
Pr-23	109.648	TTTAGAACCAAACACTATGTTATGATTTCA
Pr-24	110.622	GTGCCTTCTTTACATCCGTGG
Pr-25	111.813	GAAAGATCACTGAACATACAGTAC
Pr-26	116.277	CAGTGGCTTAGTAACCTCTTGAT
Pr-27	153.056	GTGGAAAGTAGAAAACAGAATAAGG
Pr-28	157.356	GTCCTTTCTAATGCTAACACTTCA
Pr-29	164.899	GCTTGGGCTTCCACTTCTTG
Pr-30	169.112	ACCTGAATATGTACCCCTTAATCT

Primers for eQTL analysis

Primer name	Sequence (5' to 3')
HPRT-f	ATCAGACTGAAGAGCTATTGTAATGACCA
HPRT-r	TGGCTTATATCCAACACTTCGTG
TBP-f	GAATATAATCCCAAGCGGTTTG
TBP-r	ACTTCACATCACAGCTCCCC
hSCYL3-q-f	GAAGATGGACACTGGAAGCTAG
hSCYL3-q-r	TGGGAGAGTTGTGAATTCTGG
hKIFAP3-q-f	GATGAAGACCCTGAAAACCAAAC
hKIFAP3-q-r	TCCTCAGCAAGATTCAGAAGC
hMETTL11B-q-f	AGCTATCTCTACCTGCTGGAA
hMETTL11B-q-r	TGGCTGGTACTTCTTGGTAGA
hGORAB-q-f	CGAGATTTGGGCACTTTTGG
hGORAB-q-r	GTCGCTGTGGTTCAAATGG
hPRRX1-q-f	CTGATGCTTTTGTGCGAGAAG
hPRRX1-q-r	GTAGGATTTGAGGAGGGAAGC
hMROH9-q-f	CTGTCTTTTTGTGTTCCCATG
hMROH9-q-r	CTGGAGGCTATGACTTTTACCG

Supplementary Table S2: List of Variants Observed in Targeted Sequencing

Chr	Variant	Position	REF	ALT	MAF-ALL	MAF-cases	MAF-controls	BETA	OR	SE	P.value	Class
1	1:170555164	170555164	A	T	0.004	0.005	0.003					Rare SNP
1	1:170555183	170555183	A	T	0.001	0.001	0					Rare SNP
1	rs7535455	170555234	C	G	0.299	0.305	0.293	0.0576	1.0593	0.0996	0.563	Common SNP
1	1:170555242	170555242	C	T	0.001	0.001	0					Rare SNP
1	1:170555270	170555270	G	T	0.001	0.001	0					Rare SNP
1	1:170555278	170555278	G	C	0.001	0	0.001					Rare SNP
1	1:170555484	170555484	A	G	0.001	0.001	0					Rare SNP
1	1:170555581	170555581	A	C	0.002	0.001	0.003					Rare SNP
1	rs12753115	170555736	C	T	0.012	0.012	0.012	0.035	1.0357	0.4334	0.9356	Common SNP
1	1:170555755	170555755	T	G	0.001	0	0.001					Rare SNP
1	1:170555773	170555773	G	A	0.001	0	0.001					Rare SNP
1	1:170555872	170555872	A	G	0.001	0.002	0					Rare SNP
1	1:170556052	170556052	G	C	0.001	0.001	0					Rare SNP
1	1:170556209	170556209	T	C	0.002	0.002	0.001					Rare SNP
1	1:170556506	170556506	C	T	0.001	0	0.002					Rare SNP
1	1:170556675	170556675	C	T	0.007	0.008	0.006					Rare SNP
1	1:170556722	170556722	T	G	0.001	0.001	0					Rare SNP
1	1:170556884	170556884	A	G	0.001	0.001	0					Rare SNP
1	1:170557026	170557026	C	T	0.001	0.001	0					Rare SNP
1	1:170557180	170557180	G	A	0.001	0.001	0.001					Rare SNP
1	1:170557439	170557439	G	A	0.001	0	0.001					Rare SNP
1	1:170557512	170557512	A	G	0.001	0	0.001					Rare SNP
1	1:170557546	170557546	A	T	0.001	0	0.001					Rare SNP
1	rs77189053	170557577	A	G	0.001	0.001	0					Rare SNP
1	1:170557754	170557754	C	T	0.001	0.001	0.001					Rare SNP
1	1:170557945	170557945	G	A	0.001	0.001	0					Rare SNP
1	rs68174929	170557971	C	T	0.057	0.051	0.063	-0.2387	0.7877	0.2051	0.2443	Common SNP

1	1:170558024	170558024	G	A	0.002	0.002	0.002						Rare SNP
1	1:170558061	170558061	G	A	0.001	0.001	0						Rare SNP
1	rs12745912	170558213	A	G	0.291	0.297	0.285	0.0536	1.055	0.0999	0.5915		Common SNP
1	1:170558269	170558269	C	T	0.002	0.001	0.002						Rare SNP
1	1:170558293	170558293	T	C	0.001	0	0.001						Rare SNP
1	1:170558372	170558372	A	T	0.001	0	0.001						Rare SNP
1	1:170558373	170558373	T	C	0.001	0.001	0						Rare SNP
1	1:170558464	170558464	G	A	0.001	0	0.001						Rare SNP
1	1:170558668	170558668	G	A	0.001	0	0.001						Rare SNP
1	1:170558704	170558704	G	A	0.001	0.001	0						Rare SNP
1	1:170558744	170558744	G	A	0.001	0	0.001						Rare SNP
1	rs6659073	170558831	T	G	0.001	0	0.001						Rare SNP
1	rs12750882	170558873	A	T	0.224	0.238	0.209	0.1624	1.1763	0.1094	0.1379		Common SNP
1	1:170558906	170558906	T	G	0.001	0	0.001						Rare SNP
1	rs59597570	170559256	G	C	0.355	0.367	0.344	0.1011	1.1064	0.0967	0.296		Common SNP
1	1:170559333	170559333	G	A	0.001	0	0.002						Rare SNP
1	1:170559467	170559467	C	G	0.001	0.001	0						Rare SNP
1	1:170559515	170559515	G	C	0.001	0.002	0						Rare SNP
1	1:170559741	170559741	C	T	0.001	0.001	0						Rare SNP
1	1:170559810	170559810	T	C	0.001	0.001	0						Rare SNP
1	1:170559864	170559864	A	G	0.001	0	0.001						Rare SNP
1	1:170559898	170559898	G	C	0.001	0.001	0						Rare SNP
1	1:170560031	170560031	G	A	0.001	0	0.001						Rare SNP
1	1:170560046	170560046	T	C	0.001	0.001	0						Rare SNP
1	rs4656788	170560110	C	G	0.356	0.342	0.371	-0.1234	0.8839	0.0967	0.2021		Common SNP
1	1:170560143	170560143	T	C	0.001	0	0.001						Rare SNP
1	1:170560158	170560158	C	G	0.001	0	0.001						Rare SNP
1	1:170560199	170560199	C	G	0.01	0.011	0.01	0.1012	1.1065	0.4651	0.8277		Common SNP
1	1:170560258	170560258	C	G	0.001	0.001	0						Rare SNP
1	1:170560272	170560272	A	G	0.001	0	0.001						Rare SNP
1	rs6680785	170560332	C	T	0.494	0.465	0.454	0.3123	1.3666	0.0922	0.0007		Common SNP

1	1:170560454	170560454	T	C	0.001	0	0.001						Rare SNP
1	rs6658866	170560604	A	G	0.441	0.483	0.399	0.3461	1.4135	0.0955	0.0003		Common SNP
1	1:170560680	170560680	G	A	0.001	0	0.001						Rare SNP
1	rs10919436	170560729	G	C	0.001	0	0.002						Rare SNP
1	1:170560732	170560732	T	C	0.001	0.001	0						Rare SNP
1	rs11808978	170560767	A	G	0.14	0.139	0.142	-0.0331	0.9675	0.1325	0.8029		Common SNP
1	1:170560804	170560804	C	T	0.005	0.004	0.005						Rare SNP
1	1:170560923	170560923	T	C	0.005	0.002	0.009						Rare SNP
1	1:170561102	170561102	G	A	0.001	0	0.001						Rare SNP
1	1:170561119	170561119	A	G	0.001	0.001	0						Rare SNP
1	1:170561226	170561226	C	T	0.001	0.001	0						Rare SNP
1	1:170561227	170561227	G	A	0.008	0.004	0.011						Rare SNP
1	1:170561346	170561346	G	C	0.001	0	0.001						Rare SNP
1	1:170561704	170561704	G	A	0.001	0	0.001						Rare SNP
1	1:170561728	170561728	C	G	0.001	0	0.001						Rare SNP
1	1:170561826	170561826	T	A	0.001	0.001	0						Rare SNP
1	1:170561855	170561855	A	C	0.001	0.001	0						Rare SNP
1	rs75487153	170561948	G	C	0.001	0.001	0						Rare SNP
1	1:170562135	170562135	A	G	0.001	0	0.001						Rare SNP
1	1:170562354	170562354	G	T	0.001	0.001	0						Rare SNP
1	1:170562359	170562359	G	A	0.001	0	0.001						Rare SNP
1	1:170562534	170562534	C	G	0.001	0.001	0						Rare SNP
1	1:170562591	170562591	G	C	0.001	0	0.001						Rare SNP
1	1:170562642	170562642	G	A	0.002	0.001	0.002						Rare SNP
1	1:170562787	170562787	C	G	0.001	0.001	0						Rare SNP
1	1:170563072	170563072	A	G	0.001	0	0.001						Rare SNP
1	1:170563077	170563077	G	A	0.001	0	0.001						Rare SNP
1	rs577827	170563083	A	C	0.407	0.363	0.45	-0.3668	0.6929	0.0962	0.0001		Common SNP
1	rs12027180	170563205	C	T	0.276	0.239	0.313	-0.3762	0.6865	0.1067	0.0004		Common SNP
1	1:170563391	170563391	A	G	0.001	0	0.001						Rare SNP
1	1:170563424	170563424	A	G	0.001	0.001	0						Rare SNP

1	1:170563453	170563453	C	T	0.001	0.001	0						Rare SNP
1	1:170563543	170563543	A	G	0.001	0	0.001						Rare SNP
1	1:170563740	170563740	A	T	0.001	0	0.001						Rare SNP
1	1:170563753	170563753	A	C	0.001	0	0.001						Rare SNP
1	rs76263197	170564017	G	A	0.005	0.003	0.006						Rare SNP
1	1:170564031	170564031	C	G	0.001	0	0.001						Rare SNP
1	1:170564033	170564033	C	G	0.001	0	0.001						Rare SNP
1	rs6670015	170564268	A	G	0.019	0.018	0.019	-0.0406	0.9602	0.3183	0.8985		Common SNP
1	rs6697185	170564545	G	A	0.019	0.018	0.019	-0.0406	0.9602	0.3183	0.8985		Common SNP
1	1:170564579	170564579	C	T	0.001	0.001	0						Rare SNP
1	1:170564596	170564596	G	T	0.002	0.003	0.001						Rare SNP
1	1:170564661	170564661	A	T	0.002	0	0.003						Rare SNP
1	1:170564728	170564728	G	T	0.001	0.001	0						Rare SNP
1	1:170564804	170564804	C	A	0.006	0.006	0.006						Rare SNP
1	rs502706	170564829	A	G	0.134	0.136	0.132	0.0408	1.0417	0.136	0.7641		Common SNP
1	1:170564910	170564910	G	C	0.001	0	0.001						Rare SNP
1	1:170565020	170565020	G	T	0.001	0	0.001						Rare SNP
1	1:170565064	170565064	T	A	0.001	0	0.001						Rare SNP
1	rs2050000	170565191	A	G	0.133	0.136	0.13	0.0498	1.051	0.1362	0.7148		Common SNP
1	1:170565258	170565258	T	A	0.002	0.002	0.001						Rare SNP
1	1:170565267	170565267	T	C	0.004	0.002	0.006						Rare SNP
1	1:170565279	170565279	G	C	0.001	0.001	0						Rare SNP
1	1:170565280	170565280	T	C	0.001	0.001	0						Rare SNP
1	rs34879535	170565756	G	T	0.201	0.228	0.175	0.344	1.4106	0.1187	0.0037		Common SNP
1	1:170565824	170565824	G	A	0.001	0	0.001						Rare SNP
1	1:170565857	170565857	A	G	0.001	0.001	0						Rare SNP
1	1:170565871	170565871	C	T	0.001	0.001	0						Rare SNP
1	1:170565897	170565897	A	G	0.001	0	0.001						Rare SNP
1	1:170565951	170565951	C	G	0.001	0.001	0						Rare SNP
1	1:170565979	170565979	G	A	0.001	0	0.001						Rare SNP
1	1:170565981	170565981	C	T	0.001	0.001	0.001						Rare SNP

1	rs763567	170566005	A	G	0.441	0.484	0.398	0.3555	1.4269	0.0955	0.0002	Common SNP
1	1:170566042	170566042	C	T	0.005	0.005	0.004					Rare SNP
1	rs682301	170566071	G	A	0.127	0.119	0.136	-0.1428	0.8669	0.1361	0.2941	Common SNP
1	1:170566171	170566171	T	C	0.001	0	0.001					Rare SNP
1	1:170566452	170566452	T	C	0.001	0	0.001					Rare SNP
1	rs78296504	170566551	A	G	0.019	0.018	0.019	-0.0406	0.9602	0.3183	0.8985	Common SNP
1	1:170566684	170566684	C	T	0.002	0.002	0.001					Rare SNP
1	1:170566915	170566915	C	T	0.001	0.001	0.001					Rare SNP
1	1:170566926	170566926	G	A	0.001	0	0.001					Rare SNP
1	rs77685192	170567000	A	G	0.019	0.018	0.019	-0.0406	0.9602	0.3183	0.8985	Common SNP
1	1:170567355	170567355	G	A	0.001	0.001	0					Rare SNP
1	rs1928715	170567437	C	T	0.439	0.481	0.398	0.3435	1.4099	0.0956	0.0003	Common SNP
1	1:170567534	170567534	A	G	0.001	0	0.001					Rare SNP
1	1:170567803	170567803	C	A	0.001	0	0.001					Rare SNP
1	1:170567818	170567818	G	A	0.001	0.001	0					Rare SNP
1	1:170567910	170567910	A	T	0.002	0.001	0.002					Rare SNP
1	1:170568002	170568002	G	A	0.023	0.023	0.023	0.0101	1.0102	0.3167	0.9745	Common SNP
1	1:170568089	170568089	T	C	0.001	0.001	0					Rare SNP
1	rs75680574	170568413	A	G	0.019	0.018	0.019	-0.0406	0.9602	0.3183	0.8985	Common SNP
1	1:170568425	170568425	C	T	0.001	0	0.002					Rare SNP
1	rs7517209	170568496	C	T	0.116	0.113	0.119	-0.0584	0.9433	0.1469	0.6911	Common SNP
1	1:170568518	170568518	A	G	0.001	0	0.002					Rare SNP
1	1:170568602	170568602	A	G	0.002	0.002	0.002					Rare SNP
1	rs6662298	170568740	C	G	0.019	0.018	0.019	-0.0406	0.9602	0.3183	0.8985	Common SNP
1	1:170568795	170568795	C	A	0.001	0	0.001					Rare SNP
1	1:170568857	170568857	C	T	0.001	0.001	0					Rare SNP
1	rs12742164	170568896	T	G	0.446	0.491	0.4	0.3825	1.4659	0.0963	0.0001	Common SNP
1	1:170568979	170568979	T	C	0.001	0.001	0					Rare SNP
1	1:170569002	170569002	C	A	0.001	0	0.002					Rare SNP
1	1:170569043	170569043	T	C	0.001	0.001	0					Rare SNP
1	1:170569083	170569083	C	A	0.001	0.001	0					Rare SNP

1	rs3903239	170569317	A	G	0.44	0.482	0.398	0.3469	1.4147	0.0955	0.0003	Common SNP
1	1:170569366	170569366	A	G	0.001	0	0.002					Rare SNP
1	1:170569380	170569380	G	C	0.001	0.001	0					Rare SNP
1	rs6675882	170569393	T	A	0.019	0.018	0.019	-0.0406	0.9602	0.3183	0.8985	Common SNP
1	1:170569421	170569421	A	C	0.001	0	0.001					Rare SNP
1	1:170569433	170569433	G	T	0.001	0.001	0					Rare SNP
1	1:170569446	170569446	C	G	0.006	0.008	0.004					Rare SNP
1	1:170569488	170569488	C	T	0.001	0.001	0					Rare SNP
1	1:170569508	170569508	A	G	0.001	0	0.001					Rare SNP
1	1:170569537	170569537	C	T	0.016	0.013	0.019	-0.3915	0.676	0.3683	0.288	Common SNP
1	rs76098720	170569616	T	C	0.019	0.018	0.019	-0.0406	0.9602	0.3183	0.8985	Common SNP
1	1:170569769	170569769	G	A	0.002	0.001	0.002					Rare SNP
1	1:170569843	170569843	A	T	0.001	0	0.002					Rare SNP
1	rs61826207	170569997	A	G	0.016	0.019	0.013	0.4082	1.5041	0.3691	0.2688	Common SNP
1	1:170570314	170570314	G	T	0.01	0.01	0.01	0.0301	1.0306	0.4771	0.9497	Common SNP
1	rs575600	170571004	T	G	0.128	0.12	0.136	-0.1331	0.8754	0.136	0.3276	Common SNP
1	1:170571019	170571019	A	T	0.001	0.001	0					Rare SNP
1	1:170571408	170571408	G	A	0.019	0.018	0.02	-0.0878	0.9159	0.3151	0.7804	Common SNP
1	1:170571491	170571491	T	C	0.019	0.018	0.019	-0.0406	0.9602	0.3183	0.8985	Common SNP
1	1:170571510	170571510	C	T	0.001	0.001	0.001					Rare SNP
1	1:170571513	170571513	C	T	0.019	0.018	0.019	-0.0406	0.9602	0.3183	0.8985	Common SNP
1	1:170571534	170571534	G	A	0.001	0	0.001					Rare SNP
1	1:170571578	170571578	G	A	0.019	0.018	0.019	-0.0406	0.9602	0.3183	0.8985	Common SNP
1	rs496577	170572142	C	T	0.121	0.119	0.123	-0.0367	0.964	0.1457	0.8013	Common SNP
1	1:170572283	170572283	G	A	0.006	0.005	0.006					Rare SNP
1	1:170572328	170572328	C	T	0.001	0	0.001					Rare SNP
1	1:170572329	170572329	G	A	0.001	0.001	0					Rare SNP
1	1:170572483	170572483	G	T	0.001	0.001	0					Rare SNP
1	1:170572674	170572674	A	G	0.001	0	0.001					Rare SNP
1	1:170572744	170572744	G	C	0.001	0	0.001					Rare SNP
1	1:170572800	170572800	T	C	0.001	0.001	0					Rare SNP

1	1:170572848	170572848	T	C	0.001	0	0.002						Rare SNP
1	1:170572889	170572889	G	C	0.001	0.001	0						Rare SNP
1	rs560746	170573214	T	C	0.129	0.12	0.138	-0.1497	0.861	0.1352	0.2681		Common SNP
1	1:170573346	170573346	A	G	0.001	0	0.001						Rare SNP
1	1:170573365	170573365	T	A	0.001	0.001	0						Rare SNP
1	1:170573392	170573392	A	G	0.001	0.001	0						Rare SNP
1	1:170573532	170573532	T	C	0.005	0.008	0.002						Rare SNP
1	1:170573587	170573587	C	A	0.001	0	0.001						Rare SNP
1	1:170573716	170573716	T	C	0.001	0.001	0						Rare SNP
1	rs476810	170573814	T	C	0.408	0.364	0.453	-0.3719	0.6894	0.0962	0.0001		Common SNP
1	rs12128300	170573848	C	T	0.139	0.143	0.136	0.0577	1.0594	0.134	0.6668		Common SNP
1	1:170573902	170573902	G	C	0.001	0	0.001						Rare SNP
1	1:170574010	170574010	A	T	0.001	0	0.001						Rare SNP
1	1:170574151	170574151	A	G	0.001	0	0.001						Rare SNP
1	rs74123294	170574222	A	G	0.001	0.001	0						Rare SNP
1	1:170574240	170574240	C	T	0.002	0.002	0.001						Rare SNP
1	1:170574274	170574274	C	G	0.001	0.002	0						Rare SNP
1	1:170574326	170574326	C	T	0.001	0	0.001						Rare SNP
1	1:170574390	170574390	T	C	0.003	0.002	0.003						Rare SNP
1	rs10919438	170574436	A	C	0.133	0.136	0.13	0.0498	1.051	0.1362	0.7148		Common SNP
1	1:170574641	170574641	T	C	0.001	0	0.001						Rare SNP
1	1:170574666	170574666	G	A	0.001	0.001	0.001						Rare SNP
1	1:170574694	170574694	A	G	0.001	0.001	0						Rare SNP
1	1:170574701	170574701	G	A	0.001	0.001	0						Rare SNP
1	rs1234233	170574928	C	T	0.408	0.364	0.452	-0.3685	0.6918	0.0963	0.0001		Common SNP
1	1:170575005	170575005	T	G	0.001	0.001	0						Rare SNP
1	1:170575123	170575123	A	G	0.001	0	0.001						Rare SNP
1	1:170575571	170575571	T	C	0.001	0.001	0						Rare SNP
1	1:170575588	170575588	C	A	0.001	0.001	0						Rare SNP
1	1:170575687	170575687	G	T	0.001	0	0.001						Rare SNP
1	1:170575825	170575825	C	T	0.003	0.004	0.002						Rare SNP

1	1:170575854	170575854	G	A	0.002	0.003	0						Rare SNP
1	rs61824860	170575981	A	C	0.014	0.017	0.011	0.5033	1.6542	0.4095	0.2189		Common SNP
1	1:170575982	170575982	A	T	0.001	0	0.002						Rare SNP
1	rs2206062	170576107	T	C	0.44	0.482	0.398	0.3469	1.4147	0.0955	0.0003		Common SNP
1	1:170576217	170576217	T	C	0.001	0	0.001						Rare SNP
1	1:170576379	170576379	G	C	0.001	0	0.001						Rare SNP
1	1:170576563	170576563	C	A	0.001	0.001	0						Rare SNP
1	1:170576610	170576610	C	T	0.001	0.001	0						Rare SNP
1	rs566850	170576738	A	G	0.408	0.364	0.452	-0.3685	0.6918	0.0963	0.0001		Common SNP
1	rs74461390	170576851	C	T	0.019	0.018	0.019	-0.0406	0.9602	0.3183	0.8985		Common SNP
1	1:170576977	170576977	C	G	0.001	0	0.001						Rare SNP
1	rs722597	170577055	G	A	0.295	0.265	0.325	-0.2964	0.7435	0.1037	0.0042		Common SNP
1	rs647438	170577235	G	T	0.424	0.385	0.463	-0.3224	0.7244	0.0952	0.0007		Common SNP
1	1:170577307	170577307	C	T	0.001	0.002	0						Rare SNP
1	rs10919439	170577428	G	A	0.118	0.115	0.121	-0.0572	0.9444	0.1461	0.6956		Common SNP
1	rs10919441	170579089	T	A	0.28	0.244	0.316	-0.3722	0.6892	0.1068	0.0005		Common SNP
1	1:170579226	170579226	T	G	0.002	0.002	0.001						Rare SNP
1	1:170579230	170579230	G	A	0.001	0.001	0						Rare SNP
1	1:170580385	170580385	C	G	0.001	0	0.001						Rare SNP
1	rs6664490	170580418	C	T	0.133	0.135	0.13	0.0406	1.0414	0.137	0.767		Common SNP
1	rs553905	170580477	A	G	0.408	0.364	0.452	-0.3685	0.6918	0.0963	0.0001		Common SNP
1	rs10919444	170581634	G	A	0.443	0.485	0.402	0.3434	1.4097	0.0956	0.0003		Common SNP
1	rs34252585	170581687	G	A	0.279	0.244	0.315	-0.3684	0.6918	0.107	0.0006		Common SNP
1	1:170581770	170581770	C	T	0.001	0.001	0						Rare SNP
1	1:170581775	170581775	A	G	0.001	0	0.001						Rare SNP
1	1:170582137	170582137	A	G	0.007	0.007	0.006						Rare SNP
1	1:170582261	170582261	T	C	0.006	0.006	0.005						Rare SNP
1	1:170582284	170582284	C	T	0.005	0.005	0.004						Rare SNP
1	1:170582401	170582401	T	G	0.001	0.001	0						Rare SNP
1	rs7540157	170582464	T	C	0.134	0.136	0.132	0.0408	1.0417	0.136	0.7641		Common SNP
1	1:170582486	170582486	G	C	0.001	0.001	0						Rare SNP

1	1:170582507	170582507	T	C	0.002	0.003	0.001						Rare SNP
1	1:170582540	170582540	A	T	0.001	0	0.001						Rare SNP
1	rs1952675	170582575	A	G	0.44	0.482	0.398	0.3469	1.4147	0.0955	0.0003		Common SNP
1	rs1928711	170582602	T	G	0.019	0.018	0.019	-0.0406	0.9602	0.3183	0.8985		Common SNP
1	rs6427266	170582610	A	G	0.134	0.136	0.132	0.0408	1.0417	0.136	0.7641		Common SNP
1	rs6674195	170582926	C	T	0.134	0.136	0.132	0.0408	1.0417	0.136	0.7641		Common SNP
1	1:170583034	170583034	C	T	0.019	0.018	0.019	-0.0406	0.9602	0.3183	0.8985		Common SNP
1	rs564298	170583040	G	A	0.134	0.136	0.132	0.0408	1.0417	0.136	0.7641		Common SNP
1	1:170583067	170583067	A	G	0.011	0.009	0.014	-0.4975	0.608	0.4548	0.2739		Common SNP
1	1:170583100	170583100	G	A	0.001	0	0.001						Rare SNP
1	1:170583151	170583151	A	G	0.001	0.001	0.001						Rare SNP
1	rs77058424	170583324	G	C	0.413	0.373	0.452	-0.3129	0.7313	0.0947	0.001		Common SNP
1	1:170583608	170583608	C	T	0.018	0.017	0.019	-0.1021	0.9029	0.361	0.7774		Common SNP
1	1:170583716	170583716	T	C	0.001	0	0.001						Rare SNP
1	1:170583760	170583760	C	T	0.015	0.011	0.018	-0.5451	0.5798	0.4047	0.178		Common SNP
1	1:170583867	170583867	A	T	0.001	0.001	0						Rare SNP
1	rs59152245	170583893	T	C	0.133	0.136	0.13	0.0498	1.051	0.1362	0.7148		Common SNP
1	rs6690642	170583944	T	C	0.438	0.481	0.397	0.3494	1.4182	0.0958	0.0003		Common SNP
1	1:170583960	170583960	C	T	0.001	0	0.002						Rare SNP
1	1:170584219	170584219	T	C	0.001	0.001	0						Rare SNP
1	1:170584419	170584419	C	T	0.017	0.013	0.022	-0.5239	0.5922	0.3724	0.1594		Common SNP
1	1:170584676	170584676	G	T	0.001	0	0.001						Rare SNP
1	1:170584747	170584747	A	G	0.001	0	0.001						Rare SNP
1	1:170584794	170584794	G	A	0.002	0	0.003						Rare SNP
1	1:170584817	170584817	G	T	0.001	0	0.001						Rare SNP
1	1:170584892	170584892	C	T	0.001	0.001	0						Rare SNP
1	1:170584934	170584934	T	C	0.001	0.001	0						Rare SNP
1	1:170584993	170584993	G	T	0.001	0.001	0						Rare SNP
1	1:170585051	170585051	C	T	0.001	0	0.001						Rare SNP
1	rs2206063	170585097	T	C	0.281	0.246	0.317	-0.3687	0.6916	0.1071	0.0006		Common SNP
1	1:170585276	170585276	C	T	0.001	0.001	0						Rare SNP

1	1:170585293	170585293	T	G	0.001	0.001	0						Rare SNP
1	rs621240	170585471	C	T	0.133	0.135	0.132	0.0316	1.0321	0.1368	0.8172		Common SNP
1	1:170585519	170585519	A	T	0.001	0	0.001						Rare SNP
1	1:170585620	170585620	G	A	0.001	0.001	0						Rare SNP
1	1:170585760	170585760	G	C	0.001	0.001	0						Rare SNP
1	rs619456	170585832	A	C	0.41	0.365	0.455	-0.3798	0.684	0.0967	0.0001		Common SNP
1	1:170585933	170585933	G	A	0.001	0	0.001						Rare SNP
1	1:170585961	170585961	G	C	0.001	0.001	0						Rare SNP
1	1:170585998	170585998	A	G	0.001	0.001	0.001						Rare SNP
1	1:170586077	170586077	G	A	0.001	0.001	0						Rare SNP
1	1:170586233	170586233	C	G	0.001	0.002	0						Rare SNP
1	1:170586263	170586263	T	C	0.001	0	0.002						Rare SNP
1	rs736791	170586315	G	A	0.437	0.482	0.393	0.3673	1.4438	0.096	0.0001		Common SNP
1	1:170586403	170586403	T	C	0.002	0.003	0.001						Rare SNP
1	1:170586505	170586505	A	G	0.001	0.001	0						Rare SNP
1	rs7541071	170586551	C	G	0.116	0.113	0.12	-0.069	0.9333	0.1475	0.6398		Common SNP
1	1:170586586	170586586	T	C	0.001	0.001	0						Rare SNP
1	rs78769039	170586744	A	C	0.011	0.014	0.009	0.4323	1.5408	0.4209	0.3046		Common SNP
1	1:170586793	170586793	T	G	0.001	0	0.001						Rare SNP
1	1:170587012	170587012	C	T	0.001	0	0.002						Rare SNP
1	rs574974	170587029	T	G	0.129	0.119	0.138	-0.1621	0.8504	0.1366	0.2352		Common SNP
1	1:170587034	170587034	A	G	0.001	0	0.001						Rare SNP
1	1:170587093	170587093	A	G	0.001	0	0.001						Rare SNP
1	1:170587133	170587133	T	C	0.001	0	0.001						Rare SNP
1	rs576736	170587215	A	G	0.298	0.267	0.329	-0.3021	0.7393	0.1039	0.0036		Common SNP
1	rs577676	170587340	C	T	0.434	0.399	0.468	-0.2888	0.7492	0.0964	0.0027		Common SNP
1	1:170587428	170587428	G	A	0.001	0	0.001						Rare SNP
1	1:170587548	170587548	C	T	0.001	0.001	0						Rare SNP
1	1:170587635	170587635	G	A	0.001	0.001	0						Rare SNP
1	1:170587642	170587642	G	A	0.001	0	0.001						Rare SNP
1	1:170587683	170587683	G	A	0.001	0	0.001						Rare SNP

1	1:170587687	170587687	C	G	0.001	0	0.002						Rare SNP
1	1:170587808	170587808	C	T	0.001	0.001	0						Rare SNP
1	1:170588036	170588036	T	C	0.006	0.006	0.006						Rare SNP
1	1:170588063	170588063	G	A	0.001	0	0.001						Rare SNP
1	1:170588492	170588492	G	T	0.001	0	0.001						Rare SNP
1	rs2022373	170588594	T	C	0.281	0.246	0.317	-0.3727	0.6889	0.1077	0.0005		Common SNP
1	1:170588727	170588727	A	G	0.001	0	0.002						Rare SNP
1	1:170588803	170588803	A	G	0.001	0	0.001						Rare SNP
1	1:170588926	170588926	C	T	0.001	0.001	0						Rare SNP
1	1:170588950	170588950	G	A	0.001	0	0.001						Rare SNP
1	1:170588954	170588954	T	C	0.001	0	0.001						Rare SNP
1	1:170588992	170588992	T	C	0.001	0	0.001						Rare SNP
1	1:170589209	170589209	A	G	0.001	0.001	0						Rare SNP
1	1:170589290	170589290	T	C	0.001	0	0.001						Rare SNP
1	1:170589313	170589313	G	T	0.001	0	0.001						Rare SNP
1	rs10489231	170589437	G	A	0.281	0.246	0.317	-0.3727	0.6889	0.1077	0.0005		Common SNP
1	1:170589558	170589558	T	G	0.001	0.001	0						Rare SNP
1	1:170589568	170589568	G	A	0.001	0.001	0.001						Rare SNP
1	rs2022372	170589910	T	A	0.437	0.482	0.393	0.3673	1.4438	0.096	0.0001		Common SNP
1	1:170589938	170589938	T	C	0.001	0.001	0						Rare SNP
1	1:170590124	170590124	A	G	0.001	0	0.001						Rare SNP
1	1:170590138	170590138	C	T	0.004	0.003	0.004						Rare SNP
1	1:170590142	170590142	A	G	0.002	0.002	0.001						Rare SNP
1	1:170590189	170590189	T	C	0.001	0	0.001						Rare SNP
1	1:170590223	170590223	A	G	0.001	0.001	0						Rare SNP
1	1:170590447	170590447	G	A	0.001	0	0.001						Rare SNP
1	rs12031871	170590567	G	T	0.298	0.267	0.329	-0.3021	0.7393	0.1039	0.0036		Common SNP
1	1:170590678	170590678	G	T	0.001	0	0.001						Rare SNP
1	1:170590770	170590770	A	G	0.005	0.006	0.003						Rare SNP
1	rs7537420	170590849	G	A	0.117	0.114	0.121	-0.0673	0.9349	0.1455	0.6437		Common SNP
1	1:170590914	170590914	A	G	0.001	0	0.001						Rare SNP

1	rs78738600	170590965	A	C	0.001	0.001	0						Rare SNP
1	1:170591077	170591077	A	G	0.001	0	0.001						Rare SNP
1	1:170591080	170591080	A	T	0.001	0	0.001						Rare SNP
1	rs651386	170591310	A	T	0.414	0.381	0.446	-0.2814	0.7547	0.0972	0.0038		Common SNP
1	rs11585752	170591419	C	T	0.001	0.001	0.001						Rare SNP
1	rs10753817	170591808	T	G	0.298	0.267	0.329	-0.3021	0.7393	0.1038	0.0036		Common SNP
1	rs17549441	170592126	C	A	0.204	0.22	0.188	0.204	1.2263	0.1192	0.0868		Common SNP
1	1:170592163	170592163	A	G	0.001	0	0.001						Rare SNP
1	rs502479	170592385	C	T	0.133	0.136	0.129	0.0599	1.0618	0.137	0.6618		Common SNP
1	1:170592640	170592640	G	C	0.002	0.003	0.001						Rare SNP
1	1:170592839	170592839	T	C	0.001	0.001	0						Rare SNP
1	1:170592900	170592900	C	T	0.001	0.001	0						Rare SNP
1	1:170592933	170592933	A	T	0.001	0	0.001						Rare SNP
1	1:170593136	170593136	C	T	0.002	0.001	0.002						Rare SNP
1	1:170593185	170593185	G	A	0.002	0.002	0.002						Rare SNP
1	1:170593449	170593449	G	A	0.003	0.005	0.001						Rare SNP
1	1:170593488	170593488	C	T	0.001	0	0.001						Rare SNP
1	1:170593603	170593603	A	G	0.006	0.004	0.008						Rare SNP
1	1:170593612	170593612	C	T	0.001	0.001	0						Rare SNP
1	1:170594040	170594040	G	A	0.001	0	0.001						Rare SNP
1	rs12072276	170594069	A	G	0.298	0.267	0.329	-0.3021	0.7393	0.1038	0.0036		Common SNP
1	rs10919446	170594116	G	A	0.298	0.267	0.329	-0.3021	0.7393	0.1038	0.0036		Common SNP
1	1:170594152	170594152	A	T	0.001	0.001	0.001						Rare SNP
1	rs12127271	170594170	A	T	0.115	0.114	0.116	-0.0265	0.9738	0.147	0.8569		Common SNP
1	1:170594194	170594194	G	A	0.001	0.001	0						Rare SNP
1	rs57294654	170594294	C	A	0.019	0.018	0.019	-0.0406	0.9602	0.3183	0.8985		Common SNP
1	1:170594367	170594367	T	C	0.001	0.001	0						Rare SNP
1	1:170594514	170594514	T	C	0.001	0	0.001						Rare SNP
1	1:170594589	170594589	C	T	0.001	0	0.001						Rare SNP
1	1:170594676	170594676	A	T	0.001	0	0.001						Rare SNP
1	1:170594699	170594699	A	G	0.001	0.001	0						Rare SNP

1	1:170594783	170594783	C	T	0.001	0.001	0						Rare SNP
1	1:170594980	170594980	G	A	0.001	0	0.001						Rare SNP
1	1:170595026	170595026	C	T	0.019	0.018	0.019	-0.0406	0.9602	0.3183	0.8985		Common SNP
1	1:170595072	170595072	G	A	0.001	0	0.001						Rare SNP
1	rs12074059	170595118	C	T	0.281	0.246	0.316	-0.3725	0.689	0.1086	0.0006		Common SNP
1	1:170595254	170595254	C	A	0.001	0.001	0						Rare SNP
1	1:170595484	170595484	A	G	0.001	0.001	0						Rare SNP
1	1:170595540	170595540	C	A	0.001	0	0.001						Rare SNP
1	1:170595568	170595568	A	G	0.001	0	0.001						Rare SNP
1	rs77336792	170595700	C	A	0.019	0.018	0.019	-0.0406	0.9602	0.3183	0.8985		Common SNP
1	1:170595794	170595794	G	A	0.001	0	0.001						Rare SNP
1	1:170595906	170595906	G	T	0.001	0.001	0						Rare SNP
1	1:170596064	170596064	C	T	0.001	0.001	0						Rare SNP
1	rs494521	170596072	C	T	0.458	0.499	0.417	0.3363	1.3998	0.0951	0.0004		Common SNP
1	1:170596078	170596078	C	T	0.001	0	0.001						Rare SNP
1	rs1234275	170596258	A	G	0.438	0.481	0.397	0.349	1.4176	0.0958	0.0003		Common SNP
1	rs1234274	170596373	A	G	0.438	0.479	0.397	0.3454	1.4126	0.0959	0.0003		Common SNP
1	1:170596376	170596376	C	T	0.001	0.001	0						Rare SNP
1	rs2421327	170596400	T	C	0.116	0.115	0.118	-0.0258	0.9746	0.1466	0.8606		Common SNP
1	rs11577602	170596545	A	T	0.306	0.274	0.337	-0.2798	0.7559	0.1012	0.0057		Common SNP
1	1:170598600	170598600	A	G	0.001	0.001	0						Rare SNP
1	1:170599341	170599341	G	A	0.001	0.001	0.001						Rare SNP
1	1:170599353	170599353	T	C	0.001	0.001	0.001						Rare SNP
1	1:170599435	170599435	T	C	0.001	0.001	0						Rare SNP
1	1:170599466	170599466	G	C	0.001	0.001	0.001						Rare SNP
1	rs10919448	170599573	T	C	0.301	0.273	0.328	-0.2646	0.7675	0.1039	0.0109		Common SNP
1	1:170599888	170599888	C	A	0.002	0.002	0.001						Rare SNP
1	1:170599949	170599949	C	G	0.001	0	0.001						Rare SNP
1	1:170600008	170600008	G	C	0.001	0	0.001						Rare SNP
1	1:170600013	170600013	C	A	0.001	0	0.001						Rare SNP
1	rs80308926	170600026	C	T	0.011	0.006	0.016	-0.9261	0.3961	0.4879	0.0578		Common SNP

1	rs609369	170600132	A	T	0.262	0.257	0.267	-0.0552	0.9463	0.1044	0.5966	Common SNP
1	rs609368	170600133	A	G	0.262	0.257	0.267	-0.0552	0.9463	0.1044	0.5966	Common SNP
1	1:170600213	170600213	C	T	0.001	0.001	0					Rare SNP
1	1:170600441	170600441	G	C	0.001	0.001	0					Rare SNP
1	1:170600634	170600634	C	T	0.001	0	0.001					Rare SNP
1	1:170600676	170600676	C	T	0.001	0.001	0					Rare SNP
1	1:170600677	170600677	G	A	0.001	0.002	0					Rare SNP
1	rs55886634	170600737	C	T	0.205	0.221	0.19	0.1951	1.2154	0.1185	0.0998	Common SNP
1	1:170600798	170600798	C	T	0.001	0	0.001					Rare SNP
1	1:170600807	170600807	A	C	0.001	0.001	0					Rare SNP
1	1:170601111	170601111	T	C	0.001	0.001	0.001					Rare SNP
1	1:170601122	170601122	C	T	0.001	0	0.001					Rare SNP
1	1:170601198	170601198	A	G	0.001	0.001	0					Rare SNP
1	rs12068805	170601313	T	C	0.282	0.246	0.318	-0.3784	0.685	0.1077	0.0004	Common SNP
1	1:170601350	170601350	A	G	0.002	0	0.004					Rare SNP
1	1:170601723	170601723	T	C	0.001	0	0.001					Rare SNP
1	rs675761	170601817	A	C	0.262	0.257	0.267	-0.0552	0.9463	0.1044	0.5966	Common SNP
1	1:170601865	170601865	T	C	0.005	0.004	0.005					Rare SNP
1	1:170601884	170601884	C	T	0.001	0.002	0					Rare SNP
1	rs12566725	170601935	C	T	0.281	0.246	0.317	-0.3727	0.6889	0.1077	0.0005	Common SNP
1	1:170602313	170602313	T	G	0.002	0.001	0.002					Rare SNP
1	1:170602369	170602369	C	A	0.001	0.001	0					Rare SNP
1	1:170602434	170602434	A	T	0.001	0.001	0					Rare SNP
1	1:170602505	170602505	A	G	0.001	0.001	0					Rare SNP
1	1:170602579	170602579	T	C	0.001	0.001	0					Rare SNP
1	1:170602596	170602596	C	T	0.002	0.003	0.001					Rare SNP
1	1:170602778	170602778	G	A	0.001	0	0.001					Rare SNP
1	1:170602850	170602850	G	T	0.001	0	0.001					Rare SNP
1	1:170602862	170602862	T	C	0.001	0	0.001					Rare SNP
1	1:170603019	170603019	A	C	0.001	0	0.001					Rare SNP
1	1:170603303	170603303	A	G	0.001	0	0.001					Rare SNP

1	1:170603420	170603420	G	A	0.001	0.001	0						Rare SNP
1	1:170603510	170603510	G	C	0.001	0	0.001						Rare SNP
1	1:170603525	170603525	G	A	0.001	0	0.001						Rare SNP
1	1:170603637	170603637	T	C	0.001	0	0.001						Rare SNP
1	rs4656792	170603810	A	G	0.129	0.12	0.138	-0.1513	0.8596	0.1357	0.2647		Common SNP
1	1:170603973	170603973	A	T	0.001	0	0.001						Rare SNP
1	1:170604039	170604039	C	T	0.001	0	0.001						Rare SNP
1	rs75617361	170604092	A	G	0.001	0.001	0						Rare SNP
1	rs598993	170604122	T	C	0.457	0.498	0.416	0.3367	1.4003	0.0951	0.0004		Common SNP
1	1:170604204	170604204	A	G	0.001	0	0.001						Rare SNP
1	1:170604373	170604373	A	T	0.006	0.009	0.003						Rare SNP
1	1:170604387	170604387	C	T	0.001	0	0.001						Rare SNP
1	1:170604506	170604506	A	G	0.001	0	0.001						Rare SNP
1	1:170604531	170604531	G	A	0.001	0.001	0.001						Rare SNP
1	rs6664726	170604551	G	A	0.262	0.257	0.267	-0.0552	0.9463	0.1044	0.5966		Common SNP
1	1:170604774	170604774	A	G	0.003	0.003	0.003						Rare SNP
1	1:170604820	170604820	T	C	0.001	0	0.001						Rare SNP
1	1:170604851	170604851	T	C	0.001	0	0.001						Rare SNP
1	rs12123164	170604909	T	C	0.132	0.136	0.128	0.0688	1.0712	0.1371	0.6158		Common SNP
1	rs541557	170604938	A	G	0.457	0.498	0.416	0.3367	1.4003	0.0951	0.0004		Common SNP
1	1:170605045	170605045	A	G	0.001	0.001	0						Rare SNP
1	1:170605087	170605087	G	A	0.001	0.001	0						Rare SNP
1	1:170605355	170605355	G	A	0.001	0	0.001						Rare SNP
1	1:170605429	170605429	A	C	0.019	0.018	0.019	-0.0406	0.9602	0.3183	0.8985		Common SNP
1	1:170605596	170605596	G	A	0.007	0.01	0.004						Rare SNP
1	1:170605977	170605977	A	G	0.001	0	0.001						Rare SNP
1	rs9427196	170606008	T	C	0.129	0.12	0.137	-0.144	0.8659	0.1364	0.2911		Common SNP
1	1:170606033	170606033	C	T	0.001	0	0.001						Rare SNP
1	rs644784	170606086	G	T	0.28	0.246	0.315	-0.3628	0.6957	0.1078	0.0008		Common SNP
1	1:170606102	170606102	C	T	0.001	0	0.001						Rare SNP
1	1:170606222	170606222	C	T	0.001	0	0.001						Rare SNP

1	1:170606245	170606245	G	C	0.002	0.003	0.001						Rare SNP
1	rs656539	170606354	C	T	0.28	0.246	0.315	-0.3628	0.6957	0.1078	0.0008		Common SNP
1	1:170606512	170606512	G	A	0.001	0.001	0.001						Rare SNP
1	rs12134712	170606515	C	A	0.132	0.136	0.128	0.0688	1.0712	0.1371	0.6158		Common SNP
1	1:170606600	170606600	A	G	0.001	0.001	0						Rare SNP
1	rs6427267	170606665	G	A	0.261	0.257	0.266	-0.0498	0.9514	0.1046	0.6339		Common SNP
1	1:170606891	170606891	G	A	0.001	0.002	0						Rare SNP
1	1:170606973	170606973	G	A	0.001	0.002	0						Rare SNP
1	rs6671933	170606983	G	A	0.129	0.12	0.137	-0.144	0.8659	0.1364	0.2911		Common SNP
1	1:170607015	170607015	A	G	0.001	0	0.001						Rare SNP
1	1:170607407	170607407	C	A	0.002	0.002	0.002						Rare SNP
1	1:170607627	170607627	A	C	0.001	0.001	0.001						Rare SNP
1	1:170607879	170607879	C	T	0.001	0	0.001						Rare SNP
1	1:170607923	170607923	C	T	0.001	0.001	0						Rare SNP
1	1:170608008	170608008	C	A	0.002	0	0.003						Rare SNP
1	rs539045	170608081	C	T	0.455	0.496	0.414	0.3373	1.4012	0.0952	0.0004		Common SNP
1	rs60278406	170608174	A	G	0.017	0.016	0.017	-0.0438	0.9572	0.334	0.8958		Common SNP
1	rs7541788	170608256	T	A	0.264	0.259	0.269	-0.055	0.9465	0.1038	0.5961		Common SNP
1	1:170608321	170608321	G	A	0.024	0.019	0.029	-0.4145	0.6607	0.3121	0.1841		Common SNP
1	rs473832	170609190	A	C	0.438	0.479	0.397	0.3454	1.4126	0.0959	0.0003		Common SNP
1	rs4656793	170609453	C	T	0.048	0.045	0.051	-0.1086	0.8971	0.2108	0.6065		Common SNP
1	rs6663446	170609471	C	A	0.017	0.016	0.017	-0.0438	0.9572	0.334	0.8958		Common SNP
1	rs1928709	170609494	C	T	0.132	0.136	0.128	0.0689	1.0713	0.1371	0.6155		Common SNP
1	1:170609498	170609498	A	G	0.001	0	0.001						Rare SNP
1	rs580487	170609625	T	C	0.455	0.496	0.415	0.3331	1.3953	0.0953	0.0005		Common SNP
1	1:170609656	170609656	G	A	0.004	0.003	0.005						Rare SNP
1	rs578928	170609743	A	C	0.281	0.246	0.317	-0.3703	0.6905	0.1074	0.0006		Common SNP
1	1:170609759	170609759	C	T	0.003	0.001	0.004						Rare SNP
1	1:170610240	170610240	C	T	0.001	0	0.001						Rare SNP
1	1:170610246	170610246	T	G	0.001	0	0.001						Rare SNP
1	1:170610665	170610665	A	G	0.001	0.001	0						Rare SNP

1	rs549449	170610710	G	C	0.281	0.245	0.317	-0.3756	0.6869	0.1074	0.0005	Common SNP
1	rs74743236	170610901	C	T	0.01	0.012	0.008					Common SNP
1	1:170610924	170610924	G	A	0.002	0	0.003					Rare SNP
1	rs9427197	170611057	C	T	0.264	0.259	0.269	-0.055	0.9465	0.1038	0.5961	Common SNP
1	rs12752097	170611138	T	C	0.009	0.009	0.009					Rare SNP
1	1:170611179	170611179	A	G	0.001	0	0.002					Rare SNP
1	rs12132224	170611275	G	A	0.129	0.119	0.138	-0.1611	0.8512	0.1358	0.2358	Common SNP
1	rs61824885	170611354	A	G	0.136	0.14	0.132	0.0673	1.0696	0.1356	0.6198	Common SNP
1	1:170611482	170611482	A	T	0.002	0.003	0.001					Rare SNP
1	1:170611650	170611650	A	C	0.001	0.001	0					Rare SNP
1	1:170611663	170611663	C	G	0.001	0.001	0.001					Rare SNP
1	rs6670760	170611792	G	A	0.128	0.12	0.136	-0.1365	0.8724	0.1371	0.3195	Common SNP
1	1:170611847	170611847	G	C	0.001	0	0.002					Rare SNP
1	1:170612077	170612077	C	A	0.002	0.002	0.002					Rare SNP
1	rs4614316	170612109	G	A	0.264	0.259	0.269	-0.055	0.9465	0.1038	0.5961	Common SNP
1	1:170612114	170612114	T	C	0.003	0.003	0.003					Rare SNP
1	1:170612140	170612140	G	A	0.01	0.008	0.013	-0.536	0.5851	0.4807	0.2648	Common SNP
1	1:170612193	170612193	A	C	0.002	0.001	0.002					Rare SNP
1	rs492804	170612262	C	T	0.438	0.481	0.397	0.3506	1.4199	0.096	0.0003	Common SNP
1	rs79632764	170612284	G	A	0.002	0.001	0.002					Rare SNP
1	rs4265481	170612306	C	T	0.129	0.119	0.138	-0.1611	0.8512	0.1358	0.2358	Common SNP
1	rs7550424	170612507	A	G	0.017	0.016	0.017	-0.0438	0.9572	0.334	0.8958	Common SNP
1	1:170612630	170612630	G	A	0.004	0.004	0.004					Rare SNP
1	1:170612663	170612663	G	C	0.001	0	0.001					Rare SNP
1	rs639652	170612873	G	A	0.455	0.496	0.414	0.3373	1.4012	0.0952	0.0004	Common SNP
1	rs639720	170612926	G	C	0.281	0.246	0.317	-0.3703	0.6905	0.1074	0.0006	Common SNP
1	1:170612983	170612983	C	A	0.001	0	0.001					Rare SNP
1	rs725973	170613043	T	A	0.264	0.259	0.269	-0.055	0.9465	0.1038	0.5961	Common SNP
1	rs725974	170613251	T	G	0.136	0.14	0.132	0.0673	1.0696	0.1356	0.6198	Common SNP
1	1:170613352	170613352	T	A	0.001	0	0.002					Rare SNP
1	1:170613357	170613357	T	A	0.001	0	0.001					Rare SNP

1	1:170613468	170613468	C	G	0.005	0.005	0.005						Rare SNP
1	rs12135158	170613569	G	C	0.264	0.259	0.269	-0.055	0.9465	0.1038	0.5961		Common SNP
1	1:170613578	170613578	G	A	0.001	0	0.002						Rare SNP
1	1:170613676	170613676	A	G	0.001	0.001	0						Rare SNP
1	1:170613680	170613680	G	A	0.001	0	0.001						Rare SNP
1	rs654461	170613850	A	T	0.438	0.479	0.397	0.3454	1.4126	0.0959	0.0003		Common SNP
1	rs567328	170613869	T	A	0.438	0.479	0.397	0.3454	1.4126	0.0959	0.0003		Common SNP
1	rs7554184	170613990	A	C	0.129	0.119	0.138	-0.1611	0.8512	0.1358	0.2358		Common SNP
1	1:170614008	170614008	A	T	0.001	0.001	0						Rare SNP
1	rs544478	170614042	C	T	0.438	0.479	0.397	0.3454	1.4126	0.0959	0.0003		Common SNP
1	1:170614049	170614049	C	A	0.001	0.002	0						Rare SNP
1	1:170614203	170614203	G	T	0.001	0.002	0						Rare SNP
1	1:170614207	170614207	A	G	0.001	0	0.001						Rare SNP
1	rs666419	170614244	T	C	0.28	0.246	0.315	-0.3605	0.6973	0.1075	0.0008		Common SNP
1	1:170614256	170614256	C	T	0.003	0.001	0.005						Rare SNP
1	rs79639631	170614257	G	A	0.129	0.119	0.138	-0.1611	0.8512	0.1358	0.2358		Common SNP
1	rs17615321	170614306	G	A	0.129	0.119	0.138	-0.1611	0.8512	0.1358	0.2358		Common SNP
1	1:170614357	170614357	T	C	0.001	0.001	0						Rare SNP
1	1:170614420	170614420	G	A	0.001	0.001	0.001						Rare SNP
1	1:170614540	170614540	A	G	0.001	0.001	0						Rare SNP
1	1:170614616	170614616	A	G	0.001	0	0.001						Rare SNP
1	1:170614820	170614820	G	A	0.004	0.004	0.003						Rare SNP
1	1:170614866	170614866	C	T	0.001	0.001	0						Rare SNP
1	1:170615054	170615054	A	T	0.001	0.001	0						Rare SNP
1	1:170615124	170615124	C	T	0.001	0	0.001						Rare SNP
1	1:170615174	170615174	G	A	0.001	0	0.002						Rare SNP
1	1:170615251	170615251	A	C	0.001	0.001	0						Rare SNP
1	1:170615465	170615465	G	C	0.003	0.002	0.004						Rare SNP
1	1:170615477	170615477	G	A	0.001	0	0.001						Rare SNP
1	rs61824886	170615660	C	G	0.136	0.14	0.132	0.0673	1.0696	0.1356	0.6198		Common SNP
1	1:170615684	170615684	T	G	0.004	0.006	0.002						Rare SNP

1	rs9426906	170615695	C	T	0.264	0.259	0.269	-0.055	0.9465	0.1038	0.5961	Common SNP
1	rs61824887	170615724	A	T	0.136	0.14	0.132	0.0673	1.0696	0.1356	0.6198	Common SNP
1	rs12139314	170615737	C	T	0.264	0.259	0.269	-0.055	0.9465	0.1038	0.5961	Common SNP
1	rs78360678	170615748	C	T	0.002	0.002	0.001					Rare SNP
1	1:170615749	170615749	G	A	0.001	0.001	0.001					Rare SNP
1	rs12129225	170615833	T	C	0.264	0.259	0.269	-0.055	0.9465	0.1038	0.5961	Common SNP
1	1:170615843	170615843	A	G	0.001	0.001	0					Rare SNP
1	rs593173	170615860	G	A	0.281	0.246	0.317	-0.3703	0.6905	0.1074	0.0006	Common SNP
1	rs593560	170615917	G	A	0.438	0.479	0.397	0.3454	1.4126	0.0959	0.0003	Common SNP
1	1:170615962	170615962	T	C	0.002	0.003	0.001					Rare SNP
1	1:170615980	170615980	A	G	0.001	0	0.001					Rare SNP
1	1:170616026	170616026	T	C	0.001	0	0.001					Rare SNP
1	rs12129292	170616052	T	C	0.264	0.259	0.269	-0.055	0.9465	0.1038	0.5961	Common SNP
1	1:170616112	170616112	G	A	0.001	0.001	0.001					Rare SNP
1	1:170616115	170616115	C	G	0.002	0.002	0.001					Rare SNP
1	1:170616131	170616131	T	G	0.001	0	0.001					Rare SNP
1	rs12131887	170616194	G	T	0.264	0.259	0.269	-0.055	0.9465	0.1038	0.5961	Common SNP
1	rs76708469	170616225	A	G	0.001	0.001	0					Rare SNP
1	rs12128488	170616311	A	C	0.129	0.119	0.138	-0.1611	0.8512	0.1358	0.2358	Common SNP
1	rs2988392	170616355	G	C	0.455	0.496	0.414	0.3373	1.4012	0.0952	0.0004	Common SNP
1	1:170616393	170616393	A	G	0.011	0.014	0.009	0.48	1.6161	0.4554	0.2917	Common SNP
1	1:170616465	170616465	C	A	0.001	0	0.001					Rare SNP
1	1:170616719	170616719	G	A	0.001	0.001	0					Rare SNP
1	rs6663331	170616727	A	C	0.136	0.14	0.132	0.0669	1.0692	0.1356	0.6216	Common SNP
1	1:170616811	170616811	G	A	0.001	0	0.001					Rare SNP
1	1:170616976	170616976	C	T	0.001	0.001	0					Rare SNP
1	1:170617004	170617004	C	T	0.001	0.002	0					Rare SNP
1	1:170617114	170617114	A	C	0.001	0.001	0					Rare SNP
1	1:170617136	170617136	A	G	0.001	0	0.001					Rare SNP
1	1:170617175	170617175	A	G	0.001	0.001	0					Rare SNP
1	1:170617194	170617194	T	C	0.002	0.002	0.002					Rare SNP

1	rs608930	170617306	G	T	0.435	0.478	0.392	0.3553	1.4266	0.0956	0.0002	Common SNP
1	rs619699	170617379	G	A	0.277	0.242	0.31	-0.358	0.6991	0.1078	0.0009	Common SNP
1	rs76117299	170617420	A	G	0.023	0.024	0.023	0.0617	1.0636	0.3135	0.844	Common SNP
1	1:170617442	170617442	G	A	0.001	0.001	0					Rare SNP
1	rs7521429	170617446	A	G	0.289	0.279	0.299	-0.091	0.913	0.1021	0.3728	Common SNP
1	1:170617548	170617548	A	T	0.001	0.001	0					Rare SNP
1	rs7544273	170617732	C	G	0.196	0.214	0.178	0.2339	1.2635	0.12	0.0513	Common SNP
1	1:170617895	170617895	G	A	0.002	0	0.003					Rare SNP
1	1:170618086	170618086	T	C	0.006	0.009	0.003					Rare SNP
1	1:170618172	170618172	T	A	0.001	0.002	0					Rare SNP
1	1:170618224	170618224	C	A	0.001	0	0.001					Rare SNP
1	rs10082209	170618239	C	T	0.02	0.019	0.02	-0.0231	0.9772	0.3115	0.9409	Common SNP
1	rs623752	170618291	A	G	0.431	0.475	0.387	0.3597	1.4329	0.095	0.0002	Common SNP
1	1:170618349	170618349	A	G	0.001	0.001	0					Rare SNP
1	rs531007	170618382	T	G	0.431	0.475	0.387	0.3597	1.4329	0.095	0.0002	Common SNP
1	1:170618410	170618410	T	C	0.001	0.001	0					Rare SNP
1	1:170618431	170618431	T	G	0.001	0.001	0.001					Rare SNP
1	rs12038255	170618461	G	A	0.188	0.169	0.207	-0.2549	0.775	0.121	0.0351	Common SNP
1	1:170618504	170618504	T	A	0.006	0.009	0.004					Rare SNP
1	1:170618624	170618624	C	A	0.001	0	0.001					Rare SNP
1	1:170618690	170618690	A	G	0.001	0.001	0.001					Rare SNP
1	1:170618755	170618755	A	G	0.001	0.001	0					Rare SNP
1	rs35043573	170618759	T	C	0.288	0.28	0.296	-0.0759	0.9269	0.1021	0.4571	Common SNP
1	1:170618829	170618829	T	G	0.001	0.001	0					Rare SNP
1	1:170618875	170618875	T	C	0.001	0	0.001					Rare SNP
1	1:170619184	170619184	A	G	0.022	0.026	0.019	0.3493	1.4181	0.3277	0.2865	Common SNP
1	rs12131714	170619288	A	T	0.148	0.15	0.146	0.0375	1.0382	0.1303	0.7737	Common SNP
1	rs1234282	170619324	A	T	0.277	0.24	0.313	-0.3791	0.6845	0.1077	0.0004	Common SNP
1	1:170619468	170619468	T	C	0.001	0.001	0					Rare SNP
1	rs575432	170619607	A	G	0.435	0.478	0.391	0.3607	1.4343	0.0958	0.0002	Common SNP
1	rs2901403	170619655	G	C	0.288	0.283	0.294	-0.0556	0.946	0.1027	0.5885	Common SNP

1	rs2150025	170620113	G	T	0.02	0.019	0.02	-0.0231	0.9772	0.3115	0.9409	Common SNP
1	rs9427198	170620129	G	A	0.12	0.11	0.13	-0.1833	0.8325	0.1411	0.1939	Common SNP
1	1:170620239	170620239	G	A	0.001	0.001	0					Rare SNP
1	1:170620265	170620265	A	G	0.001	0	0.001					Rare SNP
1	1:170620332	170620332	T	C	0.015	0.011	0.018	-0.5468	0.5788	0.4044	0.1763	Common SNP
1	1:170620399	170620399	C	G	0.001	0.001	0					Rare SNP
1	1:170620573	170620573	T	C	0.001	0.001	0					Rare SNP
1	rs6658782	170620692	A	T	0.288	0.28	0.296	-0.0759	0.9269	0.1021	0.4571	Common SNP
1	1:170620886	170620886	G	A	0.001	0.002	0					Rare SNP
1	1:170621193	170621193	C	T	0.001	0	0.001					Rare SNP
1	1:170621426	170621426	T	A	0.001	0.001	0					Rare SNP
1	1:170621432	170621432	T	A	0.004	0.002	0.005					Rare SNP
1	1:170621535	170621535	T	C	0.001	0	0.001					Rare SNP
1	1:170621566	170621566	A	G	0.003	0.004	0.002					Rare SNP
1	1:170621712	170621712	A	G	0.001	0	0.001					Rare SNP
1	1:170621902	170621902	G	A	0.001	0.001	0					Rare SNP
1	1:170622030	170622030	C	T	0.001	0	0.002					Rare SNP
1	1:170622032	170622032	A	G	0.001	0.001	0					Rare SNP
1	1:170622169	170622169	C	T	0.014	0.017	0.01	0.5807	1.7873	0.4226	0.1694	Common SNP
1	1:170622186	170622186	T	C	0.001	0.001	0					Rare SNP
1	1:170622283	170622283	C	A	0.001	0.001	0					Rare SNP
1	1:170622384	170622384	A	G	0.001	0.001	0					Rare SNP
1	1:170622421	170622421	C	T	0.002	0.002	0.001					Rare SNP
1	1:170622663	170622663	G	C	0.001	0	0.001					Rare SNP
1	1:170622664	170622664	T	A	0.001	0.001	0					Rare SNP
1	1:170622684	170622684	T	C	0.001	0	0.001					Rare SNP
1	1:170622810	170622810	T	G	0.002	0.003	0.001					Rare SNP
1	rs1234284	170622968	C	T	0.295	0.257	0.332	-0.347	0.7068	0.104	0.0009	Common SNP
1	1:170623032	170623032	C	T	0.001	0	0.001					Rare SNP
1	rs588837	170623109	A	G	0.437	0.481	0.393	0.3583	1.4309	0.0954	0.0002	Common SNP
1	rs12408905	170623196	G	A	0.121	0.112	0.13	-0.1734	0.8408	0.1409	0.2185	Common SNP

1	rs79829994	170623425	A	G	0.001	0.001	0.001						Rare SNP
1	1:170623549	170623549	A	T	0.001	0	0.001						Rare SNP
1	1:170623568	170623568	T	C	0.001	0	0.001						Rare SNP
1	rs61639095	170623571	A	G	0.019	0.019	0.018	0.0753	1.0782	0.3189	0.8134		Common SNP
1	1:170623598	170623598	C	T	0.001	0	0.001						Rare SNP
1	1:170623671	170623671	G	A	0.003	0.003	0.002						Rare SNP
1	1:170623901	170623901	G	T	0.001	0.001	0						Rare SNP
1	rs12089974	170623920	G	A	0.277	0.24	0.313	-0.3789	0.6846	0.1077	0.0004		Common SNP
1	1:170623968	170623968	G	A	0.002	0.003	0.001						Rare SNP
1	1:170624381	170624381	T	A	0.001	0.001	0						Rare SNP
1	1:170624483	170624483	T	C	0.009	0.005	0.013						Rare SNP
1	rs12132205	170624572	A	G	0.269	0.262	0.276	-0.0702	0.9322	0.1034	0.4974		Common SNP
1	1:170624644	170624644	G	A	0.001	0	0.001						Rare SNP
1	1:170624663	170624663	G	A	0.001	0.001	0						Rare SNP
1	1:170624717	170624717	A	G	0.001	0	0.001						Rare SNP
1	rs17615674	170624762	T	G	0.147	0.149	0.146	0.0288	1.0292	0.1304	0.8251		Common SNP
1	1:170624832	170624832	C	T	0.001	0.001	0						Rare SNP
1	1:170624836	170624836	A	G	0.001	0.001	0						Rare SNP
1	1:170625021	170625021	T	C	0.001	0.001	0						Rare SNP
1	1:170625073	170625073	G	A	0.001	0.001	0						Rare SNP
1	1:170625088	170625088	T	C	0.001	0.001	0						Rare SNP
1	1:170625192	170625192	T	C	0.001	0.001	0						Rare SNP
1	1:170625348	170625348	C	T	0.006	0.005	0.006						Rare SNP
1	1:170625361	170625361	A	T	0.001	0.001	0						Rare SNP
1	1:170625455	170625455	C	T	0.001	0	0.001						Rare SNP
1	rs501680	170625867	T	C	0.276	0.24	0.311	-0.3729	0.6887	0.1076	0.0005		Common SNP
1	1:170625873	170625873	A	G	0.002	0.002	0.002						Rare SNP
1	rs75214420	170625890	A	G	0.001	0.001	0						Rare SNP
1	1:170625989	170625989	G	A	0.001	0.001	0						Rare SNP
1	1:170626235	170626235	A	T	0.001	0	0.001						Rare SNP
1	1:170626242	170626242	A	C	0.001	0.001	0						Rare SNP

1	1:170626255	170626255	G	A	0.003	0.004	0.002						Rare SNP
1	1:170626276	170626276	C	T	0.001	0.001	0						Rare SNP
1	rs6667967	170626447	T	G	0.121	0.112	0.13	-0.1709	0.8429	0.1402	0.2229		Common SNP
1	rs6667985	170626520	T	C	0.121	0.112	0.13	-0.1709	0.8429	0.1402	0.2229		Common SNP
1	1:170626559	170626559	A	T	0.001	0.001	0						Rare SNP
1	rs77064177	170626601	G	T	0.001	0	0.001						Rare SNP
1	rs663887	170626953	G	A	0.276	0.239	0.313	-0.3828	0.6819	0.1074	0.0004		Common SNP
1	1:170627049	170627049	T	C	0.001	0	0.001						Rare SNP
1	1:170627057	170627057	C	T	0.001	0	0.001						Rare SNP
1	1:170627065	170627065	C	T	0.001	0	0.001						Rare SNP
1	1:170627096	170627096	A	G	0.005	0.005	0.005						Rare SNP
1	1:170627132	170627132	G	A	0.001	0	0.002						Rare SNP
1	rs61817372	170627172	A	G	0.147	0.149	0.146	0.0288	1.0292	0.1304	0.8251		Common SNP
1	1:170627292	170627292	A	G	0.001	0.001	0						Rare SNP
1	1:170627293	170627293	A	T	0.001	0	0.001						Rare SNP
1	1:170627423	170627423	T	G	0.001	0	0.001						Rare SNP
1	rs78962619	170627559	G	A	0.019	0.019	0.019	0.0252	1.0256	0.315	0.9361		Common SNP
1	rs78849006	170627601	C	T	0.001	0.001	0						Rare SNP
1	1:170627617	170627617	T	C	0.001	0	0.001						Rare SNP
1	1:170627638	170627638	G	A	0.001	0	0.002						Rare SNP
1	1:170627642	170627642	T	C	0.001	0.001	0.001						Rare SNP
1	1:170627789	170627789	C	G	0.002	0.002	0.002						Rare SNP
1	1:170628096	170628096	C	A	0.001	0	0.001						Rare SNP
1	1:170628097	170628097	C	T	0.01	0.008	0.013	-0.5202	0.5944	0.4812	0.2798		Common SNP
1	rs680084	170628255	G	A	0.455	0.5	0.41	0.3645	1.4398	0.0942	0.0001		Common SNP
1	rs583006	170628388	A	G	0.253	0.215	0.29	-0.4094	0.664	0.1103	0.0002		Common SNP
1	rs76459208	170628427	G	A	0.002	0	0.003						Rare SNP
1	rs524877	170628435	G	C	0.277	0.239	0.315	-0.3925	0.6754	0.1073	0.0003		Common SNP
1	1:170628553	170628553	C	T	0.001	0.001	0						Rare SNP
1	1:170628813	170628813	T	C	0.001	0	0.001						Rare SNP
1	1:170628870	170628870	A	G	0.007	0.005	0.009						Rare SNP

1	1:170628904	170628904	C	T	0.001	0.001	0						Rare SNP
1	1:170629127	170629127	G	T	0.001	0	0.001						Rare SNP
1	1:170629184	170629184	A	G	0.001	0.001	0						Rare SNP
1	1:170629303	170629303	T	C	0.011	0.01	0.013	-0.2844	0.7525	0.4282	0.5066		Common SNP
1	1:170629460	170629460	G	C	0.001	0.001	0						Rare SNP
1	1:170629489	170629489	T	G	0.001	0.001	0						Rare SNP
1	1:170629576	170629576	C	T	0.002	0.003	0.001						Rare SNP
1	1:170629578	170629578	C	T	0.001	0.001	0						Rare SNP
1	1:170629588	170629588	G	T	0.001	0.001	0						Rare SNP
1	1:170629593	170629593	G	A	0.002	0.002	0.001						Rare SNP
1	1:170629606	170629606	A	G	0.002	0.001	0.002						Rare SNP
1	1:170629789	170629789	G	A	0.001	0.001	0						Rare SNP
1	1:170629934	170629934	T	C	0.036	0.037	0.036	0.028	1.0284	0.2509	0.9112		Common SNP
1	1:170630189	170630189	C	T	0.001	0	0.001						Rare SNP
1	rs601938	170630259	G	T	0.277	0.239	0.315	-0.3925	0.6754	0.1073	0.0003		Common SNP
1	1:170630411	170630411	A	G	0.001	0	0.001						Rare SNP
1	1:170630428	170630428	G	T	0.001	0	0.001						Rare SNP
1	1:170630474	170630474	C	T	0.001	0	0.001						Rare SNP
1	1:170630544	170630544	G	A	0.001	0	0.001						Rare SNP
1	rs77884741	170630662	C	G	0.002	0.002	0.001						Rare SNP
1	1:170630744	170630744	G	A	0.001	0	0.001						Rare SNP
1	1:170630789	170630789	G	A	0.001	0	0.001						Rare SNP
1	1:170631008	170631008	T	A	0.019	0.019	0.019	0.0252	1.0256	0.315	0.9361		Common SNP
1	1:170631010	170631010	C	T	0.003	0.005	0.001						Rare SNP
1	1:170631030	170631030	T	C	0.002	0.002	0.001						Rare SNP
1	1:170631136	170631136	G	A	0.001	0.001	0						Rare SNP
1	1:170631178	170631178	A	G	0.001	0.001	0.001						Rare SNP
1	1:170631243	170631243	T	C	0.028	0.03	0.026	0.1678	1.1827	0.2874	0.5593		Common SNP
1	1:170631367	170631367	A	C	0.001	0.001	0						Rare SNP
1	rs627848	170631420	G	A	0.274	0.237	0.31	-0.3866	0.6794	0.108	0.0003		Common SNP
1	rs78076188	170631479	A	G	0.001	0.002	0						Rare SNP

1	rs629234	170631763	T	C	0.455	0.499	0.41	0.3681	1.445	0.0941	0.0001	Common SNP
1	1:170631939	170631939	G	A	0.001	0	0.001					Rare SNP
1	1:170631941	170631941	T	C	0.001	0.001	0					Rare SNP
1	1:170631990	170631990	G	T	0.002	0.002	0.001					Rare SNP
1	rs74123149	170632093	G	C	0.019	0.019	0.019	0.0252	1.0256	0.315	0.9361	Common SNP
1	1:170632329	170632329	G	A	0.001	0.001	0					Rare SNP
1	rs56250774	170632384	A	G	0.199	0.218	0.181	0.2344	1.2642	0.1201	0.051	Common SNP
1	1:170632413	170632413	C	G	0.001	0.001	0.001					Rare SNP
1	1:170632547	170632547	C	T	0.001	0.001	0					Rare SNP
1	1:170632681	170632681	C	T	0.001	0	0.001					Rare SNP
1	1:170632683	170632683	G	A	0.001	0.001	0					Rare SNP
1	rs12121907	170632808	C	T	0.149	0.152	0.147	0.0354	1.0361	0.1302	0.7854	Common SNP
1	rs73032785	170632839	G	A	0.003	0.002	0.003					Rare SNP
1	1:170632939	170632939	G	A	0.001	0	0.001					Rare SNP
1	rs73032787	170632965	G	A	0.123	0.113	0.134	-0.1868	0.8296	0.139	0.1789	Common SNP
1	1:170632970	170632970	T	C	0.001	0.001	0					Rare SNP
1	1:170633016	170633016	T	G	0.001	0.001	0					Rare SNP
1	1:170633060	170633060	A	G	0.001	0.001	0					Rare SNP
1	1:170633077	170633077	C	T	0.002	0.002	0.001					Rare SNP
1	1:170633162	170633162	G	A	0.002	0.002	0.001					Rare SNP
1	1:170633166	170633166	G	A	0.001	0.001	0					Rare SNP
1	1:170633288	170633288	C	G	0.001	0.001	0					Rare SNP
1	rs77911930	170633322	C	T	0.002	0.002	0.002					Rare SNP
1	rs79715821	170633347	G	C	0.001	0.001	0					Rare SNP
1	1:170633434	170633434	C	T	0.001	0.001	0					Rare SNP
1	rs74674242	170633544	G	A	0.001	0	0.002					Rare SNP
1	1:170633569	170633569	C	T	0.002	0.001	0.002					Rare SNP
1	1:170633688	170633688	A	G	0.005	0.004	0.005					Rare SNP
1	1:170633711	170633711	G	A	0.002	0.001	0.002					Rare SNP
1	1:170633839	170633839	G	A	0.001	0	0.001					Rare SNP
1	1:170633842	170633842	G	C	0.001	0	0.001					Rare SNP

1	rs659580	170633896	T	C	0.232	0.258	0.206	0.3025	1.3532	0.1122	0.007	Common SNP
1	1:170633908	170633908	C	G	0.001	0.001	0					Rare SNP
1	1:170633960	170633960	G	A	0.001	0	0.001					Rare SNP
1	rs13374413	170634047	C	A	0.019	0.018	0.019	-0.0245	0.9758	0.3187	0.9388	Common SNP
1	1:170634122	170634122	G	T	0.001	0.001	0					Rare SNP
1	1:170634140	170634140	G	T	0.001	0	0.001					Rare SNP
1	rs57040325	170634144	C	G	0.151	0.154	0.148	0.0435	1.0444	0.1293	0.7366	Common SNP
1	1:170634396	170634396	C	T	0.001	0	0.001					Rare SNP
1	rs72705052	170634487	C	T	0.067	0.057	0.077	-0.3211	0.7254	0.1905	0.0918	Common SNP
1	1:170634511	170634511	C	A	0.001	0.001	0					Rare SNP
1	1:170634562	170634562	T	C	0.001	0	0.001					Rare SNP
1	1:170634563	170634563	C	T	0.001	0.001	0.001					Rare SNP
1	1:170634698	170634698	C	G	0.001	0.001	0.001					Rare SNP
1	1:170634833	170634833	G	A	0.001	0.001	0					Rare SNP
1	1:170634859	170634859	C	T	0.001	0.001	0.001					Rare SNP
1	rs77401317	170634895	T	A	0.12	0.11	0.129	-0.1737	0.8405	0.1413	0.219	Common SNP
1	1:170634931	170634931	C	T	0.003	0.003	0.002					Rare SNP
1	rs525489	170635002	T	G	0.431	0.475	0.388	0.3577	1.43	0.0953	0.0002	Common SNP
1	1:170635111	170635111	A	C	0.001	0.001	0.001					Rare SNP
1	1:170635273	170635273	A	G	0.001	0	0.001					Rare SNP
1	1:170635327	170635327	C	A	0.001	0	0.002					Rare SNP
1	rs12118712	170635357	C	A	0.02	0.016	0.024	-0.3843	0.6809	0.3336	0.2494	Common SNP
1	rs501005	170635369	A	G	0.464	0.499	0.429	0.2867	1.332	0.0949	0.0025	Common SNP
1	1:170635426	170635426	C	G	0.001	0.001	0					Rare SNP
1	1:170635452	170635452	A	G	0.001	0	0.002					Rare SNP
1	1:170635595	170635595	C	T	0.005	0.004	0.005					Rare SNP
1	1:170635699	170635699	G	A	0.001	0	0.001					Rare SNP
1	1:170635991	170635991	G	T	0.001	0	0.001					Rare SNP
1	rs473133	170636079	A	T	0.434	0.477	0.39	0.3582	1.4308	0.0954	0.0002	Common SNP
1	1:170636173	170636173	G	A	0.001	0	0.001					Rare SNP
1	rs4656219	170636355	G	C	0.12	0.11	0.129	-0.1737	0.8405	0.1413	0.219	Common SNP

1	1:170636596	170636596	C	T	0.001	0.001	0.001						Rare SNP
1	1:170636826	170636826	C	T	0.001	0.001	0.001						Rare SNP
1	rs1540322	170636982	A	G	0.149	0.154	0.144	0.0701	1.0726	0.1301	0.5899		Common SNP
1	1:170636991	170636991	A	G	0.001	0.001	0						Rare SNP
1	rs7532461	170637019	G	C	0.122	0.112	0.133	-0.1898	0.8271	0.14	0.1751		Common SNP
1	1:170637089	170637089	A	C	0.023	0.024	0.022	0.1185	1.1258	0.3167	0.7083		Common SNP
1	1:170637092	170637092	G	A	0.001	0	0.001						Rare SNP
1	1:170637107	170637107	A	T	0.001	0	0.001						Rare SNP
1	1:170637150	170637150	C	A	0.001	0.001	0						Rare SNP
1	rs73032802	170637306	G	A	0.003	0.002	0.003						Rare SNP
1	1:170637416	170637416	A	C	0.005	0.008	0.003						Rare SNP
1	rs73034963	170637481	C	T	0.002	0.002	0.002						Rare SNP
1	1:170637534	170637534	T	A	0.001	0	0.001						Rare SNP
1	1:170637589	170637589	G	A	0.001	0	0.001						Rare SNP
1	1:170637600	170637600	C	T	0.001	0.001	0						Rare SNP
1	1:170637656	170637656	C	T	0.001	0	0.001						Rare SNP
1	1:170637876	170637876	T	C	0.001	0	0.001						Rare SNP
1	1:170637907	170637907	C	T	0.001	0	0.001						Rare SNP
1	1:170637914	170637914	A	G	0.001	0.001	0						Rare SNP
1	rs61130317	170637950	C	G	0.149	0.154	0.144	0.0701	1.0726	0.1301	0.5899		Common SNP
1	rs75966482	170637985	C	G	0.001	0.002	0						Rare SNP
1	rs61817377	170638251	G	A	0.002	0.002	0.001						Rare SNP
1	1:170638281	170638281	T	C	0.001	0	0.001						Rare SNP
1	rs73034965	170638289	T	C	0.124	0.113	0.135	-0.1962	0.8218	0.139	0.1579		Common SNP
1	rs520525	170638333	A	G	0.275	0.239	0.311	-0.3778	0.6854	0.1076	0.0004		Common SNP
1	1:170638372	170638372	A	T	0.001	0	0.001						Rare SNP
1	1:170638390	170638390	A	T	0.001	0	0.001						Rare SNP
1	rs78894138	170638525	A	G	0.001	0.001	0						Rare SNP
1	rs10919449	170638658	C	A	0.417	0.369	0.464	-0.3896	0.6773	0.0954	4.45E-05		Common SNP
1	1:170638670	170638670	G	A	0.001	0	0.001						Rare SNP
1	1:170638683	170638683	T	C	0.001	0	0.001						Rare SNP

1	1:170638774	170638774	C	T	0.001	0.001	0.001						Rare SNP
1	1:170638876	170638876	C	A	0.001	0.001	0						Rare SNP
1	1:170638882	170638882	T	C	0.001	0.001	0						Rare SNP
1	1:170638937	170638937	C	T	0.001	0	0.001						Rare SNP
1	1:170638965	170638965	A	G	0.001	0.001	0						Rare SNP
1	1:170639034	170639034	T	G	0.001	0.001	0						Rare SNP
1	rs9426907	170639085	G	C	0.122	0.113	0.132	-0.1701	0.8436	0.1399	0.2238		Common SNP
1	rs77115195	170639219	C	T	0.018	0.017	0.019	-0.078	0.925	0.323	0.8092		Common SNP
1	1:170639284	170639284	T	C	0.001	0.001	0						Rare SNP
1	1:170639318	170639318	G	T	0.007	0.008	0.006						Rare SNP
1	1:170639335	170639335	T	C	0.001	0	0.002						Rare SNP
1	1:170639365	170639365	T	C	0.005	0.006	0.004						Rare SNP
1	1:170639623	170639623	G	T	0.001	0.001	0						Rare SNP
1	1:170639694	170639694	T	G	0.001	0	0.001						Rare SNP
1	1:170639698	170639698	T	C	0.001	0.002	0						Rare SNP
1	1:170639733	170639733	C	T	0.001	0.001	0						Rare SNP
1	1:170639864	170639864	C	T	0.001	0	0.002						Rare SNP
1	1:170640028	170640028	G	A	0.001	0.001	0						Rare SNP
1	1:170640199	170640199	G	T	0.001	0	0.001						Rare SNP
1	1:170640297	170640297	C	A	0.001	0.001	0						Rare SNP
1	1:170640397	170640397	G	C	0.001	0	0.002						Rare SNP
1	1:170640441	170640441	A	G	0.001	0	0.001						Rare SNP
1	1:170640471	170640471	G	T	0.001	0	0.001						Rare SNP
1	1:170640531	170640531	C	T	0.004	0.004	0.004						Rare SNP
1	rs73034968	170640624	G	C	0.002	0.002	0.002						Rare SNP
1	1:170640647	170640647	C	T	0.001	0	0.001						Rare SNP
1	1:170640693	170640693	C	T	0.001	0	0.001						Rare SNP
1	1:170640790	170640790	A	G	0.001	0	0.001						Rare SNP
1	1:170641165	170641165	T	A	0.005	0.003	0.006						Rare SNP
1	1:170641185	170641185	T	C	0.001	0.001	0						Rare SNP
1	1:170641260	170641260	A	G	0.001	0.001	0						Rare SNP

1	rs76643078	170641472	T	C	0.001	0.001	0						Rare SNP
1	1:170641483	170641483	T	G	0.001	0.001	0						Rare SNP
1	1:170641568	170641568	C	G	0.001	0	0.001						Rare SNP
1	1:170641625	170641625	A	G	0.001	0.001	0						Rare SNP
1	1:170641727	170641727	C	T	0.001	0	0.001						Rare SNP
1	rs78710246	170641733	A	T	0.07	0.06	0.08	-0.3041	0.7378	0.1813	0.0935		Common SNP
1	rs502612	170641803	T	C	0.489	0.482	0.46	0.2329	1.2623	0.0936	0.0128		Common SNP
1	1:170641969	170641969	A	T	0.002	0.003	0						Rare SNP
1	rs79334762	170641996	G	C	0.127	0.12	0.134	-0.1188	0.888	0.138	0.3893		Common SNP
1	1:170642155	170642155	G	A	0.001	0	0.001						Rare SNP
1	1:170642175	170642175	A	G	0.001	0.001	0						Rare SNP
1	1:170642496	170642496	T	C	0.001	0.001	0						Rare SNP
1	rs591715	170642509	G	A	0.198	0.168	0.227	-0.3857	0.68	0.1199	0.0013		Common SNP
1	1:170642798	170642798	C	G	0.001	0	0.001						Rare SNP
1	1:170642895	170642895	G	C	0.001	0	0.001						Rare SNP
1	rs593479	170642899	T	C	0.489	0.476	0.455	0.2723	1.313	0.093	0.0034		Common SNP
1	1:170642956	170642956	C	A	0.003	0.002	0.003						Rare SNP
1	1:170642987	170642987	A	G	0.006	0.005	0.008						Rare SNP
1	rs6693796	170643278	T	C	0.018	0.017	0.018	-0.0293	0.9711	0.3263	0.9284		Common SNP
1	rs12024275	170643365	G	A	0.193	0.166	0.22	-0.3608	0.6971	0.1213	0.0029		Common SNP
1	1:170643558	170643558	C	T	0.002	0.003	0						Rare SNP
1	1:170643591	170643591	C	T	0.001	0.001	0						Rare SNP
1	1:170643599	170643599	C	T	0.001	0.001	0						Rare SNP
1	1:170643755	170643755	G	A	0.001	0.002	0						Rare SNP
1	1:170643931	170643931	G	A	0.001	0.002	0						Rare SNP
1	1:170643999	170643999	C	A	0.003	0.004	0.002						Rare SNP
1	1:170644142	170644142	C	A	0.01	0.006	0.014	-0.7821	0.4574	0.4994	0.1173		Common SNP
1	1:170644143	170644143	C	A	0.001	0.001	0						Rare SNP
1	1:170644432	170644432	C	T	0.001	0	0.001						Rare SNP
1	1:170644447	170644447	A	G	0.001	0.001	0						Rare SNP
1	1:170644453	170644453	T	G	0.001	0.001	0						Rare SNP

1	1:170644477	170644477	G	C	0.001	0	0.001						Rare SNP
1	rs61817379	170644498	A	G	0.326	0.333	0.318	0.0709	1.0735	0.1012	0.4832		Common SNP
1	rs78910453	170644589	G	T	0.008	0.005	0.011						Rare SNP
1	1:170644690	170644690	A	G	0.001	0.001	0						Rare SNP
1	1:170644698	170644698	G	A	0.003	0	0.006						Rare SNP
1	rs76168995	170644776	G	A	0.001	0	0.002						Rare SNP
1	1:170644801	170644801	C	T	0.001	0.001	0						Rare SNP
1	1:170644853	170644853	T	C	0.001	0.001	0						Rare SNP
1	1:170644854	170644854	A	G	0.002	0.001	0.002						Rare SNP
1	1:170644907	170644907	G	T	0.002	0.002	0.001						Rare SNP
1	rs3021341	170644955	A	C	0.001	0.001	0.001						Rare SNP
1	1:170644973	170644973	G	A	0.001	0.001	0.001						Rare SNP
1	1:170645082	170645082	G	A	0.001	0.001	0						Rare SNP
1	1:170645357	170645357	C	T	0.001	0	0.001						Rare SNP
1	1:170645440	170645440	C	T	0.001	0	0.001						Rare SNP
1	rs2150026	170645489	T	C	0.322	0.331	0.314	0.0828	1.0863	0.1014	0.4147		Common SNP
1	1:170645594	170645594	T	C	0.002	0	0.003						Rare SNP
1	rs1016819	170645774	C	G	0.321	0.33	0.311	0.088	1.092	0.1016	0.3864		Common SNP
1	1:170645819	170645819	A	G	0.001	0	0.001						Rare SNP
1	1:170645859	170645859	T	C	0.001	0.001	0						Rare SNP
1	1:170645908	170645908	C	T	0.001	0	0.001						Rare SNP
1	1:170646194	170646194	T	C	0.001	0.001	0.001						Rare SNP
1	1:170646285	170646285	G	A	0.001	0.001	0						Rare SNP
1	1:170646401	170646401	C	T	0.001	0	0.001						Rare SNP
1	rs76924140	170646418	C	A	0.001	0.001	0.001						Rare SNP
1	rs667190	170646507	A	G	0.001	0.001	0.001						Rare SNP
1	1:170646593	170646593	C	T	0.001	0.001	0						Rare SNP
1	1:170646615	170646615	G	A	0.001	0.001	0						Rare SNP
1	rs78859386	170646719	G	A	0.001	0	0.001						Rare SNP
1	1:170646806	170646806	C	T	0.004	0.002	0.005						Rare SNP
1	rs669998	170647159	C	T	0.001	0.001	0.001						Rare SNP

1	1:170647259	170647259	A	G	0.002	0	0.003						Rare SNP
1	1:170647459	170647459	A	C	0.001	0	0.001						Rare SNP
1	rs75054539	170647620	A	G	0.001	0.001	0						Rare SNP
1	1:170647624	170647624	G	A	0.001	0.001	0.001						Rare SNP
1	1:170647660	170647660	C	T	0.001	0.001	0						Rare SNP
1	1:170647661	170647661	G	A	0.001	0.001	0						Rare SNP
1	1:170647742	170647742	G	C	0.004	0.004	0.004						Rare SNP
1	1:170647873	170647873	T	G	0.001	0	0.001						Rare SNP
1	rs684506	170647924	G	A	0.001	0.001	0.001						Rare SNP
1	1:170648080	170648080	A	C	0.001	0.001	0						Rare SNP
1	1:170648088	170648088	C	T	0.025	0.024	0.026	-0.0811	0.9221	0.2963	0.7844		Common SNP
1	1:170648341	170648341	G	T	0.001	0	0.001						Rare SNP
1	1:170648350	170648350	A	G	0.002	0.001	0.002						Rare SNP
1	1:170648370	170648370	C	T	0.001	0	0.001						Rare SNP
1	1:170648391	170648391	T	A	0.001	0.001	0						Rare SNP
1	1:170648396	170648396	A	G	0.001	0	0.001						Rare SNP
1	1:170648563	170648563	C	T	0.002	0	0.003						Rare SNP
1	1:170648586	170648586	G	C	0.003	0.002	0.003						Rare SNP
1	1:170648592	170648592	G	C	0.001	0.001	0.001						Rare SNP
1	1:170648701	170648701	T	C	0.001	0	0.001						Rare SNP
1	1:170648912	170648912	A	T	0.001	0	0.001						Rare SNP
1	1:170648938	170648938	C	T	0.005	0.003	0.006						Rare SNP
1	1:170649110	170649110	A	G	0.001	0.001	0						Rare SNP
1	1:170649141	170649141	T	G	0.001	0	0.002						Rare SNP
1	1:170649185	170649185	A	G	0.001	0.001	0						Rare SNP
1	1:170649337	170649337	T	C	0.002	0.001	0.002						Rare SNP
1	rs75408174	170649355	G	A	0.005	0.006	0.003						Rare SNP
1	1:170649361	170649361	C	T	0.001	0.002	0						Rare SNP
1	1:170649468	170649468	A	G	0.001	0.001	0.001						Rare SNP
1	1:170649528	170649528	G	T	0.001	0	0.001						Rare SNP
1	rs74695379	170649543	C	T	0.007	0.009	0.005						Rare SNP

1	1:170649682	170649682	G	T	0.01	0.011	0.01	0.1114	1.1178	0.4644	0.8104	Common SNP
1	1:170649788	170649788	C	T	0.001	0	0.001					Rare SNP
1	1:170649831	170649831	C	T	0.001	0	0.001					Rare SNP
1	1:170649907	170649907	C	G	0.005	0.004	0.006					Rare SNP
1	rs11576746	170649992	A	G	0.076	0.077	0.075	0.0146	1.0147	0.1773	0.9344	Common SNP
1	1:170650072	170650072	T	C	0.002	0.001	0.002					Rare SNP
1	1:170650206	170650206	G	A	0.005	0.005	0.005					Rare SNP
1	1:170650272	170650272	G	C	0.003	0.005	0.001					Rare SNP
1	1:170650332	170650332	T	A	0.001	0	0.001					Rare SNP
1	1:170650446	170650446	C	A	0.001	0	0.001					Rare SNP
1	1:170650606	170650606	A	G	0.001	0.001	0					Rare SNP
1	1:170650759	170650759	G	A	0.001	0.001	0.001					Rare SNP
1	1:170650852	170650852	C	T	0.001	0.001	0					Rare SNP
1	1:170650949	170650949	G	A	0.003	0.001	0.004					Rare SNP
1	1:170651178	170651178	G	C	0.001	0	0.002					Rare SNP
1	1:170651414	170651414	A	C	0.008	0.008	0.009					Rare SNP
1	1:170651960	170651960	A	G	0.001	0.002	0					Rare SNP
1	1:170652069	170652069	T	C	0.001	0	0.001					Rare SNP
1	1:170652174	170652174	A	G	0.004	0.004	0.004					Rare SNP
1	1:170652273	170652273	T	C	0.001	0	0.001					Rare SNP
1	1:170652281	170652281	G	A	0.001	0	0.001					Rare SNP
1	1:170652291	170652291	G	A	0.001	0	0.002					Rare SNP
1	rs79732385	170652352	G	C	0.001	0.002	0					Rare SNP
1	rs78955308	170652365	G	T	0.001	0.001	0					Rare SNP
1	rs12066968	170652434	G	T	0.069	0.066	0.072	-0.0977	0.9069	0.1843	0.596	Common SNP
1	1:170652639	170652639	C	T	0.001	0.001	0					Rare SNP
1	rs78909375	170652683	C	T	0.017	0.013	0.02	-0.4824	0.6173	0.3751	0.1985	Common SNP
1	1:170652819	170652819	A	G	0.001	0	0.001					Rare SNP
1	1:170652992	170652992	T	C	0.001	0	0.001					Rare SNP
1	1:170653138	170653138	A	G	0.001	0	0.001					Rare SNP
1	1:170653184	170653184	C	T	0.002	0.002	0.001					Rare SNP

1	1:170653302	170653302	C	T	0.001	0.001	0						Rare SNP
1	1:170653318	170653318	T	C	0.001	0.001	0						Rare SNP
1	1:170653340	170653340	C	A	0.003	0.002	0.003						Rare SNP
1	rs662871	170653377	A	T	0.398	0.406	0.39	0.0646	1.0668	0.0964	0.5025		Common SNP
1	1:170653392	170653392	A	G	0.001	0	0.001						Rare SNP
1	1:170653501	170653501	C	T	0.001	0.001	0						Rare SNP
1	1:170653611	170653611	C	T	0.001	0	0.002						Rare SNP
1	1:170653767	170653767	G	A	0.001	0	0.001						Rare SNP
1	1:170653859	170653859	A	C	0.001	0.001	0						Rare SNP
1	1:170654107	170654107	G	A	0.001	0	0.001						Rare SNP
1	rs520131	170654118	C	T	0.397	0.405	0.39	0.06	1.0618	0.0963	0.5335		Common SNP
1	rs76337363	170654269	G	A	0.001	0.001	0.001						Rare SNP
1	1:170654303	170654303	T	C	0.001	0.001	0						Rare SNP
1	rs9426909	170654427	C	T	0.072	0.073	0.071	0.0159	1.016	0.1829	0.9306		Common SNP
1	1:170654555	170654555	C	T	0.001	0	0.001						Rare SNP
1	rs10919450	170654769	A	G	0.071	0.073	0.07	0.0329	1.0334	0.1835	0.8578		Common SNP
1	1:170654773	170654773	C	T	0.001	0.001	0						Rare SNP
1	1:170654930	170654930	G	T	0.001	0	0.001						Rare SNP
1	1:170655006	170655006	A	G	0.001	0.001	0						Rare SNP
1	1:170655024	170655024	T	C	0.001	0.001	0						Rare SNP
1	1:170655095	170655095	T	C	0.001	0	0.001						Rare SNP
1	1:170655193	170655193	T	C	0.001	0	0.001						Rare SNP
1	1:170655255	170655255	A	C	0.001	0	0.001						Rare SNP
1	1:170655401	170655401	T	C	0.001	0.001	0						Rare SNP
1	1:170655495	170655495	A	G	0.001	0.001	0						Rare SNP
1	rs76129566	170655676	A	C	0.001	0.001	0						Rare SNP
1	1:170655847	170655847	T	G	0.001	0.001	0						Rare SNP
1	1:170655953	170655953	T	C	0.001	0.001	0						Rare SNP
1	1:170656006	170656006	A	G	0.003	0.001	0.004						Rare SNP
1	1:170656099	170656099	T	C	0.001	0.001	0						Rare SNP
1	1:170656239	170656239	T	A	0.001	0	0.001						Rare SNP

1	1:170656317	170656317	C	A	0.002	0.003	0							Rare SNP
1	1:170656349	170656349	C	T	0.001	0.001	0.001							Rare SNP
1	1:170656408	170656408	G	A	0.001	0.001	0.001							Rare SNP
1	1:170656410	170656410	C	G	0.001	0	0.001							Rare SNP
1	1:170656460	170656460	C	A	0.001	0	0.001							Rare SNP
1	1:170656571	170656571	G	C	0.001	0.001	0							Rare SNP
1	rs75817690	170656609	G	A	0.005	0.003	0.006							Rare SNP
1	1:170656649	170656649	C	T	0.003	0.002	0.004							Rare SNP
1	1:170656770	170656770	A	G	0.001	0.001	0							Rare SNP
1	1:170656922	170656922	C	T	0.001	0	0.001							Rare SNP
1	1:170657107	170657107	A	C	0.001	0.001	0							Rare SNP
1	rs76670772	170657117	C	G	0.001	0	0.001							Rare SNP
1	1:170657142	170657142	A	G	0.001	0.001	0							Rare SNP
1	1:170657331	170657331	G	T	0.001	0	0.001							Rare SNP
1	rs17550940	170657335	A	C	0.32	0.33	0.31	0.093	1.0975	0.1016	0.36			Common SNP
1	1:170657582	170657582	G	A	0.001	0	0.001							Rare SNP
1	1:170657773	170657773	C	T	0.002	0.004	0							Rare SNP
1	1:170657928	170657928	A	C	0.016	0.015	0.016	-0.0738	0.9289	0.3659	0.8402			Common SNP
1	rs531650	170657994	C	T	0.27	0.293	0.247	0.2462	1.2792	0.1069	0.0213			Common SNP
1	rs80313408	170658008	A	T	0.001	0	0.001							Rare SNP
1	1:170658056	170658056	G	A	0.001	0.001	0							Rare SNP
1	1:170658076	170658076	T	C	0.002	0.002	0.002							Rare SNP
1	rs79511990	170658104	A	G	0.001	0	0.001							Rare SNP
1	1:170658275	170658275	T	A	0.001	0.001	0							Rare SNP
1	rs12723586	170658324	G	T	0.121	0.104	0.138	-0.3295	0.7193	0.1463	0.0243			Common SNP
1	rs76231658	170658332	A	C	0.031	0.035	0.028	0.2212	1.2476	0.273	0.4178			Common SNP
1	rs12744534	170658355	A	G	0.121	0.104	0.138	-0.3295	0.7193	0.1463	0.0243			Common SNP
1	1:170658527	170658527	C	A	0.001	0.001	0							Rare SNP
1	rs505271	170658528	A	G	0.002	0.002	0.001							Rare SNP
1	1:170658633	170658633	T	G	0.001	0	0.001							Rare SNP
1	1:170658642	170658642	T	C	0.002	0.002	0.001							Rare SNP

1	1:170658689	170658689	G	T	0.001	0	0.001						Rare SNP
1	1:170658892	170658892	A	G	0.001	0.001	0						Rare SNP
1	1:170659034	170659034	C	T	0.002	0	0.003						Rare SNP
1	1:170659125	170659125	G	T	0.001	0	0.001						Rare SNP
1	rs12079725	170659205	C	G	0.001	0	0.002						Rare SNP
1	1:170659236	170659236	A	G	0.001	0	0.001						Rare SNP
1	1:170659282	170659282	A	T	0.001	0.001	0						Rare SNP
1	1:170659311	170659311	G	A	0.001	0	0.001						Rare SNP
1	1:170659312	170659312	C	A	0.001	0	0.001						Rare SNP
1	1:170659359	170659359	T	C	0.001	0.001	0						Rare SNP
1	1:170659413	170659413	C	T	0.002	0.003	0						Rare SNP
1	1:170659418	170659418	T	C	0.001	0.001	0						Rare SNP
1	1:170659437	170659437	G	A	0.015	0.011	0.018	-0.5413	0.582	0.4043	0.1806		Common SNP
1	1:170659638	170659638	G	A	0.001	0.001	0						Rare SNP
1	1:170659953	170659953	G	T	0.001	0	0.001						Rare SNP
1	1:170660058	170660058	T	A	0.001	0	0.001						Rare SNP
1	1:170660170	170660170	G	T	0.001	0.001	0						Rare SNP
1	1:170660186	170660186	G	A	0.001	0.001	0						Rare SNP
1	1:170660211	170660211	T	C	0.001	0.001	0						Rare SNP
1	1:170660388	170660388	G	T	0.001	0	0.001						Rare SNP
1	1:170660413	170660413	A	C	0.015	0.011	0.018	-0.5413	0.582	0.4043	0.1806		Common SNP
1	rs79371244	170660451	C	T	0.002	0.001	0.002						Rare SNP
1	1:170660731	170660731	T	A	0.001	0	0.001						Rare SNP
1	1:170660785	170660785	C	T	0.001	0.001	0						Rare SNP
1	1:170660947	170660947	A	C	0.001	0	0.002						Rare SNP
1	1:170661039	170661039	G	T	0.001	0.002	0						Rare SNP
1	1:170661139	170661139	G	A	0.001	0	0.001						Rare SNP
1	1:170661225	170661225	T	C	0.001	0	0.001						Rare SNP
1	1:170661306	170661306	A	T	0.001	0	0.001						Rare SNP
1	1:170661334	170661334	C	T	0.001	0.001	0.001						Rare SNP
1	1:170661362	170661362	T	A	0.001	0	0.001						Rare SNP

1	1:170661432	170661432	T	G	0.001	0.001	0						Rare SNP
1	rs4656221	170661470	A	G	0.313	0.319	0.307	0.0562	1.0578	0.1016	0.5803		Common SNP
1	rs77828580	170661674	T	A	0.003	0.002	0.004						Rare SNP
1	rs4656222	170661688	T	A	0.313	0.319	0.306	0.0616	1.0636	0.1018	0.5449		Common SNP
1	1:170661689	170661689	A	G	0.001	0.001	0						Rare SNP
1	rs489090	170661764	C	A	0.181	0.205	0.157	0.328	1.3882	0.123	0.0077		Common SNP
1	1:170661803	170661803	G	A	0.001	0.002	0						Rare SNP
1	1:170661810	170661810	T	C	0.001	0.001	0						Rare SNP
1	1:170661865	170661865	C	G	0.001	0	0.001						Rare SNP
1	1:170661952	170661952	A	G	0.001	0	0.001						Rare SNP
1	1:170662045	170662045	A	G	0.001	0	0.002						Rare SNP
1	1:170662080	170662080	T	G	0.001	0.002	0						Rare SNP
1	rs61817382	170662120	A	G	0.316	0.32	0.311	0.0404	1.0413	0.1009	0.6888		Common SNP
1	rs78214791	170662195	C	T	0.002	0.001	0.002						Rare SNP
1	1:170662423	170662423	T	C	0.001	0.001	0.001						Rare SNP
1	1:170662577	170662577	C	A	0.001	0.001	0						Rare SNP
1	rs71635674	170662598	G	C	0.119	0.102	0.136	-0.3374	0.7136	0.1479	0.0225		Common SNP
1	1:170662627	170662627	G	A	0.001	0	0.001						Rare SNP
1	1:170663299	170663299	C	G	0.006	0.009	0.003						Rare SNP
1	1:170663326	170663326	A	G	0.001	0.001	0.001						Rare SNP
1	1:170663368	170663368	T	C	0.001	0.001	0						Rare SNP
1	1:170663461	170663461	G	A	0.001	0.001	0						Rare SNP
1	rs541618	170663475	A	G	0.489	0.5	0.477	0.0926	1.097	0.0932	0.3205		Common SNP
1	1:170663509	170663509	A	G	0.001	0.001	0						Rare SNP
1	1:170663682	170663682	G	A	0.001	0	0.001						Rare SNP
1	1:170663982	170663982	G	T	0.002	0.002	0.001						Rare SNP
1	rs12130326	170664053	G	T	0.072	0.074	0.07	0.05	1.0513	0.1829	0.7846		Common SNP
1	1:170664127	170664127	G	A	0.001	0.001	0.001						Rare SNP
1	rs513287	170664237	G	A	0.491	0.497	0.478	0.1011	1.1064	0.0932	0.2777		Common SNP
1	rs75143924	170664253	C	T	0.001	0	0.002						Rare SNP
1	1:170664434	170664434	T	C	0.001	0.001	0						Rare SNP

1	rs75423408	170664440	T	C	0.001	0.001	0						Rare SNP
1	rs76087661	170664504	G	T	0.021	0.021	0.022	-0.0431	0.9578	0.3278	0.8954		Common SNP
1	rs58668918	170664669	G	C	0.002	0.001	0.002						Rare SNP
1	1:170664706	170664706	A	G	0.005	0.004	0.006						Rare SNP
1	1:170664753	170664753	G	T	0.001	0	0.001						Rare SNP
1	1:170664862	170664862	C	T	0.001	0.001	0						Rare SNP
1	1:170664873	170664873	T	A	0.001	0.001	0						Rare SNP
1	1:170664942	170664942	C	G	0.001	0.001	0						Rare SNP
1	1:170665010	170665010	C	T	0.001	0	0.001						Rare SNP
1	1:170665152	170665152	C	T	0.001	0.002	0						Rare SNP
1	1:170665177	170665177	A	G	0.001	0	0.001						Rare SNP
1	rs61817383	170665348	C	T	0.311	0.316	0.305	0.0517	1.053	0.1019	0.6123		Common SNP
1	1:170665440	170665440	A	G	0.001	0	0.001						Rare SNP
1	1:170665568	170665568	T	C	0.001	0.001	0						Rare SNP
1	1:170665595	170665595	A	T	0.001	0	0.001						Rare SNP
1	rs12566345	170665664	C	T	0.118	0.102	0.135	-0.327	0.7211	0.148	0.0271		Common SNP
1	rs12123292	170665672	A	T	0.072	0.074	0.07	0.05	1.0513	0.1829	0.7846		Common SNP
1	rs78647140	170665785	A	G	0.001	0.002	0						Rare SNP
1	1:170666106	170666106	T	C	0.001	0	0.002						Rare SNP
1	1:170666223	170666223	G	C	0.001	0	0.001						Rare SNP
1	1:170666237	170666237	C	A	0.001	0	0.001						Rare SNP
1	rs75551901	170666282	T	C	0.002	0.001	0.002						Rare SNP
1	1:170666331	170666331	A	C	0.001	0	0.001						Rare SNP
1	1:170666350	170666350	G	A	0.015	0.013	0.016	-0.2182	0.804	0.3937	0.5794		Common SNP
1	1:170666355	170666355	G	A	0.001	0.001	0						Rare SNP
1	1:170666497	170666497	A	G	0.001	0	0.001						Rare SNP
1	1:170666539	170666539	T	C	0.001	0	0.001						Rare SNP
1	1:170666574	170666574	T	C	0.001	0.001	0						Rare SNP
1	1:170666675	170666675	A	T	0.001	0	0.001						Rare SNP
1	rs674213	170666854	T	C	0.078	0.079	0.076	0.0379	1.0387	0.1752	0.8286		Common SNP
1	rs59011246	170667033	A	G	0.002	0.001	0.002						Rare SNP

1	1:170667219	170667219	G	A	0.001	0	0.001						Rare SNP
1	1:170667458	170667458	T	G	0.001	0.001	0						Rare SNP
1	1:170667635	170667635	A	C	0.004	0.003	0.004						Rare SNP
1	1:170667675	170667675	C	T	0.001	0.001	0						Rare SNP
1	1:170667757	170667757	T	C	0.001	0	0.001						Rare SNP
1	1:170667829	170667829	G	A	0.001	0.001	0						Rare SNP
1	1:170667884	170667884	C	A	0.001	0.001	0						Rare SNP
1	rs61640808	170668018	G	T	0.002	0.001	0.002						Rare SNP
1	1:170668036	170668036	C	T	0.001	0	0.001						Rare SNP
1	1:170668037	170668037	C	T	0.001	0.001	0						Rare SNP
1	1:170668148	170668148	C	T	0.001	0.001	0						Rare SNP
1	rs72705060	170668367	C	A	0.108	0.101	0.115	-0.1532	0.858	0.1503	0.308		Common SNP
1	1:170668368	170668368	C	T	0.001	0	0.001						Rare SNP
1	1:170668551	170668551	A	G	0.001	0.001	0						Rare SNP
1	rs80071911	170668663	G	C	0.002	0.001	0.002						Rare SNP
1	1:170668808	170668808	G	A	0.006	0.008	0.004						Rare SNP
1	1:170668809	170668809	A	T	0.002	0.002	0.001						Rare SNP
1	rs74225329	170668907	C	T	0.001	0.002	0						Rare SNP
1	1:170668910	170668910	T	C	0.001	0	0.001						Rare SNP
1	1:170668938	170668938	G	A	0.001	0	0.001						Rare SNP
1	1:170668995	170668995	G	A	0.001	0	0.001						Rare SNP
1	1:170669021	170669021	C	T	0.004	0.005	0.003						Rare SNP
1	1:170669037	170669037	C	T	0.001	0	0.002						Rare SNP
1	rs550559	170669109	A	G	0.075	0.077	0.073	0.0466	1.0477	0.177	0.7924		Common SNP
1	1:170669115	170669115	A	G	0.001	0	0.002						Rare SNP
1	1:170669166	170669166	C	T	0.001	0.001	0						Rare SNP
1	rs76987566	170669205	C	T	0.014	0.012	0.016	-0.3077	0.7351	0.4033	0.4455		Common SNP
1	rs547769	170669399	A	G	0.002	0.002	0.002						Rare SNP
1	1:170669431	170669431	G	T	0.002	0.003	0						Rare SNP
1	1:170669445	170669445	G	A	0.002	0.001	0.002						Rare SNP
1	1:170669491	170669491	T	A	0.001	0	0.001						Rare SNP

1	1:170669523	170669523	C	T	0.001	0.001	0						Rare SNP
1	1:170669524	170669524	G	A	0.001	0.001	0						Rare SNP
1	1:170669577	170669577	T	G	0.002	0.003	0.001						Rare SNP
1	rs78013753	170669617	T	C	0.001	0	0.001						Rare SNP
1	1:170669897	170669897	C	T	0.001	0.001	0						Rare SNP
1	1:170669991	170669991	C	T	0.001	0.001	0						Rare SNP
1	1:170669992	170669992	G	A	0.001	0	0.001						Rare SNP
1	1:170670098	170670098	C	G	0.001	0	0.001						Rare SNP
1	1:170670378	170670378	T	C	0.001	0.001	0.001						Rare SNP
1	rs517508	170670424	T	C	0.073	0.076	0.071	0.0641	1.0661	0.1799	0.7218		Common SNP
1	rs7539534	170670456	T	C	0.071	0.074	0.069	0.0667	1.069	0.1836	0.7161		Common SNP
1	1:170670644	170670644	A	G	0.001	0.001	0						Rare SNP
1	rs7527909	170670661	G	A	0.07	0.073	0.067	0.0852	1.0889	0.1853	0.6457		Common SNP
1	1:170670679	170670679	T	A	0.001	0	0.001						Rare SNP
1	1:170670875	170670875	A	G	0.002	0.004	0						Rare SNP
1	1:170670905	170670905	A	T	0.001	0	0.001						Rare SNP
1	1:170671101	170671101	C	T	0.001	0.001	0						Rare SNP
1	1:170671129	170671129	T	C	0.004	0.002	0.006						Rare SNP
1	1:170671181	170671181	T	G	0.001	0.001	0						Rare SNP
1	1:170671284	170671284	A	G	0.009	0.009	0.01						Rare SNP
1	1:170671303	170671303	G	T	0.001	0	0.001						Rare SNP
1	1:170671330	170671330	G	T	0.001	0.001	0						Rare SNP
1	1:170671385	170671385	C	G	0.001	0.001	0						Rare SNP
1	1:170671435	170671435	C	T	0.001	0.002	0						Rare SNP
1	1:170671477	170671477	G	A	0.001	0	0.001						Rare SNP
1	1:170671508	170671508	T	A	0.001	0.001	0						Rare SNP
1	rs61817384	170671541	G	A	0.288	0.294	0.282	0.0588	1.0605	0.1041	0.5724		Common SNP
1	1:170671591	170671591	T	G	0.001	0.001	0						Rare SNP
1	1:170671601	170671601	G	A	0.001	0	0.001						Rare SNP
1	1:170671838	170671838	G	T	0.001	0	0.001						Rare SNP
1	1:170671916	170671916	G	A	0.001	0.001	0						Rare SNP

1	rs17551016	170671962	G	T	0.288	0.294	0.282	0.0588	1.0605	0.1041	0.5724	Common SNP
1	1:170672037	170672037	C	A	0.002	0.002	0.001					Rare SNP
1	1:170672114	170672114	C	G	0.001	0.001	0					Rare SNP
1	1:170672170	170672170	G	A	0.001	0	0.001					Rare SNP
1	1:170672293	170672293	G	A	0.001	0.001	0					Rare SNP
1	1:170672319	170672319	C	T	0.002	0.003	0					Rare SNP
1	1:170672335	170672335	G	C	0.004	0.005	0.002					Rare SNP
1	1:170672525	170672525	A	G	0.001	0.001	0					Rare SNP
1	1:170672847	170672847	A	G	0.001	0	0.001					Rare SNP
1	1:170672951	170672951	A	G	0.002	0.002	0.001					Rare SNP
1	1:170673057	170673057	A	G	0.001	0.001	0					Rare SNP
1	rs72705061	170673149	T	G	0.007	0.008	0.006					Rare SNP
1	1:170673195	170673195	T	G	0.001	0	0.001					Rare SNP
1	1:170673204	170673204	T	C	0.001	0.001	0					Rare SNP
1	1:170673250	170673250	T	A	0.001	0	0.001					Rare SNP
1	1:170673407	170673407	G	A	0.001	0.001	0					Rare SNP
1	1:170673435	170673435	A	G	0.001	0.001	0					Rare SNP
1	1:170673445	170673445	G	A	0.001	0	0.001					Rare SNP
1	rs76157942	170673491	A	T	0.019	0.022	0.017	0.2433	1.2755	0.3422	0.4772	Common SNP
1	1:170673560	170673560	G	A	0.001	0.001	0					Rare SNP
1	rs79595190	170673779	C	T	0.002	0.001	0.002					Rare SNP
1	1:170673789	170673789	A	G	0.001	0.002	0					Rare SNP
1	1:170673850	170673850	G	T	0.001	0.001	0					Rare SNP
1	1:170673968	170673968	G	C	0.001	0	0.002					Rare SNP
1	1:170674151	170674151	C	T	0.001	0	0.001					Rare SNP
1	rs74545461	170674261	T	C	0.071	0.074	0.069	0.0667	1.069	0.1836	0.7161	Common SNP
1	1:170674274	170674274	C	T	0.001	0.001	0					Rare SNP
1	1:170674600	170674600	T	A	0.001	0	0.001					Rare SNP
1	1:170674624	170674624	A	G	0.001	0	0.001					Rare SNP
1	1:170674778	170674778	A	G	0.001	0.001	0					Rare SNP
1	1:170674826	170674826	A	G	0.002	0.001	0.002					Rare SNP

1	rs7540713	170674903	C	T	0.308	0.297	0.319	-0.107	0.8985	0.1007	0.2877	Common SNP
1	1:170675135	170675135	C	A	0.001	0.001	0.001					Rare SNP
1	1:170675262	170675262	T	A	0.001	0.002	0					Rare SNP
1	1:170675376	170675376	T	C	0.001	0	0.001					Rare SNP
1	1:170675568	170675568	T	C	0.001	0.001	0					Rare SNP
1	1:170675637	170675637	A	G	0.001	0.001	0					Rare SNP
1	rs10753818	170675672	C	T	0.011	0.012	0.01	0.2205	1.2467	0.4554	0.6282	Common SNP
1	rs74123161	170675711	T	C	0.002	0.002	0.002					Rare SNP
1	1:170675849	170675849	T	C	0.001	0	0.001					Rare SNP
1	1:170675889	170675889	T	G	0.001	0.001	0					Rare SNP
1	1:170675951	170675951	G	A	0.001	0.001	0.001					Rare SNP
1	1:170676149	170676149	C	G	0.001	0	0.001					Rare SNP
1	1:170676191	170676191	A	G	0.001	0	0.002					Rare SNP
1	1:170676222	170676222	G	C	0.001	0	0.001					Rare SNP
1	1:170676272	170676272	A	G	0.001	0	0.001					Rare SNP
1	1:170676519	170676519	A	G	0.001	0	0.002					Rare SNP
1	1:170676527	170676527	T	C	0.001	0.001	0					Rare SNP
1	1:170676536	170676536	T	G	0.001	0.001	0					Rare SNP
1	1:170676546	170676546	C	T	0.002	0.004	0					Rare SNP
1	1:170676628	170676628	T	C	0.001	0.001	0					Rare SNP
1	1:170676944	170676944	G	A	0.001	0.001	0					Rare SNP
1	rs73036614	170677088	T	C	0.002	0.002	0.002					Rare SNP
1	1:170677164	170677164	G	A	0.001	0.001	0					Rare SNP
1	1:170677197	170677197	T	A	0.001	0.001	0					Rare SNP
1	1:170677268	170677268	T	C	0.001	0	0.001					Rare SNP
1	1:170677280	170677280	G	A	0.001	0	0.001					Rare SNP
1	1:170677374	170677374	A	G	0.001	0.001	0.001					Rare SNP
1	1:170677394	170677394	C	T	0.004	0.004	0.004					Rare SNP
1	1:170677436	170677436	A	C	0.001	0.001	0					Rare SNP
1	rs12140571	170677498	C	T	0.071	0.074	0.069	0.0667	1.069	0.1836	0.7161	Common SNP
1	1:170677689	170677689	A	G	0.001	0	0.001					Rare SNP

1	1:170677723	170677723	T	C	0.071	0.074	0.069	0.0667	1.069	0.1836	0.7161	Common SNP
1	1:170677829	170677829	T	C	0.001	0	0.001					Rare SNP
1	rs55960892	170677856	C	T	0.002	0.002	0.002					Rare SNP
1	1:170677891	170677891	G	T	0.001	0	0.001					Rare SNP
1	1:170678148	170678148	T	A	0.008	0.009	0.006					Rare SNP
1	1:170678192	170678192	G	A	0.001	0.001	0					Rare SNP
1	1:170678246	170678246	C	T	0.001	0	0.001					Rare SNP
1	1:170678279	170678279	A	C	0.001	0.001	0					Rare SNP
1	rs77560711	170678593	G	A	0.002	0.001	0.002					Rare SNP
1	1:170678684	170678684	G	C	0.001	0	0.001					Rare SNP
1	1:170678709	170678709	T	G	0.001	0	0.001					Rare SNP
1	1:170678837	170678837	G	T	0.002	0.001	0.002					Rare SNP
1	1:170678847	170678847	G	A	0.001	0.001	0					Rare SNP
1	1:170678933	170678933	C	T	0.001	0.001	0					Rare SNP
1	1:170678980	170678980	T	C	0.001	0	0.001					Rare SNP
1	1:170679026	170679026	G	A	0.001	0	0.001					Rare SNP
1	1:170679043	170679043	A	G	0.001	0	0.001					Rare SNP
1	1:170679056	170679056	G	C	0.001	0	0.001					Rare SNP
1	1:170679211	170679211	T	C	0.001	0	0.001					Rare SNP
1	1:170679372	170679372	A	G	0.002	0.001	0.003					Rare SNP
1	1:170679460	170679460	A	G	0.001	0.001	0					Rare SNP
1	rs59384810	170679474	G	A	0.002	0.002	0.002					Rare SNP
1	1:170679583	170679583	C	T	0.003	0.002	0.004					Rare SNP
1	1:170679610	170679610	A	G	0.001	0	0.001					Rare SNP
1	1:170679658	170679658	T	C	0.001	0	0.001					Rare SNP
1	rs78172866	170679896	C	T	0.002	0.002	0.001					Rare SNP
1	1:170679917	170679917	A	G	0.001	0.001	0					Rare SNP
1	1:170679938	170679938	G	A	0.006	0.004	0.009					Rare SNP
1	rs10800531	170680145	A	T	0.492	0.498	0.483	0.0798	1.083	0.0934	0.3932	Common SNP
1	1:170680176	170680176	T	G	0.001	0.001	0					Rare SNP
1	1:170680187	170680187	C	T	0.001	0.001	0					Rare SNP

1	1:170680279	170680279	T	C	0.001	0	0.001						Rare SNP
1	1:170680362	170680362	T	C	0.001	0	0.001						Rare SNP
1	1:170680453	170680453	A	T	0.001	0	0.001						Rare SNP
1	1:170680460	170680460	C	T	0.001	0.001	0						Rare SNP
1	rs6702337	170680677	T	C	0.072	0.075	0.07	0.0654	1.0676	0.1824	0.72		Common SNP
1	rs74123164	170680685	C	G	0.002	0.002	0.002						Rare SNP
1	1:170680774	170680774	T	G	0.001	0.001	0						Rare SNP
1	1:170680838	170680838	C	G	0.001	0.001	0						Rare SNP
1	1:170681037	170681037	G	T	0.004	0.005	0.002						Rare SNP
1	1:170681042	170681042	C	G	0.001	0	0.002						Rare SNP
1	1:170681090	170681090	A	C	0.001	0.001	0						Rare SNP
1	rs12085794	170681143	G	A	0.001	0	0.002						Rare SNP
1	1:170681523	170681523	T	A	0.001	0	0.001						Rare SNP
1	rs75703685	170681556	C	T	0.001	0	0.001						Rare SNP
1	rs12135368	170681643	T	C	0.018	0.013	0.023	-0.5803	0.5597	0.3684	0.1153		Common SNP
1	rs55689412	170681749	C	T	0.002	0.002	0.002						Rare SNP
1	rs61817386	170681971	C	A	0.288	0.292	0.283	0.0421	1.043	0.104	0.6855		Common SNP
1	1:170681998	170681998	A	G	0.002	0.004	0						Rare SNP
1	1:170682382	170682382	A	C	0.001	0.001	0						Rare SNP
1	1:170682396	170682396	G	A	0.001	0	0.001						Rare SNP
1	1:170683036	170683036	C	T	0.001	0	0.001						Rare SNP
1	1:170683043	170683043	G	A	0.001	0.001	0						Rare SNP
1	1:170683068	170683068	G	A	0.001	0.001	0.001						Rare SNP
1	1:170683092	170683092	C	T	0.001	0	0.001						Rare SNP
1	rs78481350	170683175	C	T	0.002	0.001	0.002						Rare SNP
1	1:170683446	170683446	T	C	0.001	0	0.001						Rare SNP
1	1:170683515	170683515	C	A	0.001	0	0.001						Rare SNP
1	1:170683655	170683655	C	A	0.001	0	0.001						Rare SNP
1	1:170683826	170683826	G	C	0.001	0.001	0						Rare SNP
1	1:170683971	170683971	C	G	0.001	0.001	0						Rare SNP
1	1:170684042	170684042	T	A	0.001	0	0.001						Rare SNP

1	1:170684070	170684070	G	A	0.001	0.001	0						Rare SNP
1	1:170684236	170684236	G	C	0.002	0.001	0.003						Rare SNP
1	1:170684244	170684244	C	T	0.001	0.001	0.001						Rare SNP
1	rs2187895	170684431	G	C	0.187	0.212	0.163	0.3303	1.3914	0.1209	0.0063		Common SNP
1	rs76662848	170684490	A	T	0.043	0.038	0.047	-0.2594	0.7715	0.2373	0.2745		Common SNP
1	rs6679519	170685222	A	G	0.003	0.004	0.002						Rare SNP
1	1:170685263	170685263	A	G	0.001	0	0.001						Rare SNP
1	rs75655724	170686088	G	A	0.002	0.001	0.002						Rare SNP
1	1:170686135	170686135	A	C	0.001	0	0.002						Rare SNP
1	1:170686321	170686321	G	T	0.001	0.001	0						Rare SNP
1	1:170686575	170686575	A	C	0.001	0.001	0.001						Rare SNP
1	1:170686578	170686578	C	T	0.001	0	0.001						Rare SNP
1	rs76338702	170686615	A	C	0.02	0.023	0.017	0.2942	1.3421	0.3387	0.3851		Common SNP
1	rs59188802	170686662	T	C	0.289	0.294	0.283	0.0544	1.0559	0.105	0.6046		Common SNP
1	1:170686814	170686814	G	T	0.001	0	0.001						Rare SNP
1	1:170686843	170686843	C	T	0.001	0	0.001						Rare SNP
1	1:170686904	170686904	G	A	0.001	0.001	0						Rare SNP
1	1:170686925	170686925	T	C	0.001	0.001	0						Rare SNP
1	1:170686943	170686943	T	G	0.001	0.001	0.001						Rare SNP
1	1:170687028	170687028	T	C	0.001	0	0.001						Rare SNP
1	rs78212768	170687041	G	C	0.002	0.002	0.002						Rare SNP
1	1:170687144	170687144	G	A	0.001	0	0.001						Rare SNP
1	1:170687157	170687157	G	T	0.001	0	0.001						Rare SNP
1	1:170687223	170687223	A	T	0.001	0	0.001						Rare SNP
1	1:170687254	170687254	G	C	0.001	0.001	0						Rare SNP
1	1:170687313	170687313	G	A	0.075	0.078	0.072	0.08	1.0833	0.1799	0.6565		Common SNP
1	1:170687445	170687445	C	T	0.001	0.001	0						Rare SNP
1	rs77341024	170687471	T	C	0.002	0.001	0.002						Rare SNP
1	rs80294620	170687478	G	C	0.001	0.001	0						Rare SNP
1	1:170687632	170687632	C	A	0.001	0	0.001						Rare SNP
1	rs12136110	170687919	T	C	0.077	0.08	0.074	0.0769	1.08	0.1765	0.6629		Common SNP

1	rs736022	170688005	C	T	0.288	0.293	0.283	0.0489	1.0501	0.1049	0.6413	Common SNP
1	1:170688022	170688022	C	G	0.001	0.001	0					Rare SNP
1	rs74123165	170688025	C	T	0.002	0.001	0.002					Rare SNP
1	1:170688216	170688216	C	T	0.001	0	0.001					Rare SNP
1	1:170688241	170688241	A	G	0.004	0.002	0.006					Rare SNP
1	rs12138799	170688306	G	C	0.075	0.077	0.072	0.0642	1.0663	0.1803	0.7217	Common SNP
1	1:170688355	170688355	C	T	0.003	0.004	0.002					Rare SNP
1	rs60542172	170688364	G	A	0.002	0.002	0.002					Rare SNP
1	1:170688386	170688386	T	G	0.001	0	0.001					Rare SNP
1	1:170688820	170688820	C	T	0.001	0	0.001					Rare SNP
1	1:170689354	170689354	G	C	0.003	0.004	0.002					Rare SNP
1	1:170689366	170689366	C	A	0.001	0.002	0					Rare SNP
1	rs75606436	170689440	C	A	0.002	0.001	0.002					Rare SNP
1	1:170689572	170689572	A	G	0.001	0.001	0					Rare SNP
1	1:170689766	170689766	C	T	0.001	0.001	0					Rare SNP
1	rs78684576	170689807	A	C	0.002	0.001	0.002					Rare SNP
1	1:170689863	170689863	T	A	0.001	0	0.001					Rare SNP
1	1:170689906	170689906	A	G	0.001	0	0.001					Rare SNP
1	1:170689973	170689973	C	T	0.001	0	0.001					Rare SNP
1	1:170690166	170690166	G	T	0.001	0.001	0					Rare SNP
1	1:170690275	170690275	G	A	0.001	0.002	0					Rare SNP
1	1:170690386	170690386	A	T	0.001	0	0.001					Rare SNP
1	1:170690572	170690572	T	C	0.001	0.001	0					Rare SNP
1	rs2213751	170690593	T	G	0.144	0.126	0.162	-0.2969	0.7431	0.1353	0.0282	Common SNP
1	rs12141830	170690653	G	A	0.075	0.077	0.072	0.0642	1.0663	0.1803	0.7217	Common SNP
1	1:170690661	170690661	G	A	0.001	0.001	0.001					Rare SNP
1	1:170690964	170690964	C	T	0.001	0	0.001					Rare SNP
1	1:170691002	170691002	G	A	0.001	0.001	0					Rare SNP
1	rs76839558	170691131	T	G	0.144	0.126	0.162	-0.2969	0.7431	0.1353	0.0282	Common SNP
1	rs4656796	170691140	A	T	0.294	0.3	0.289	0.0544	1.0559	0.1046	0.6031	Common SNP
1	1:170691150	170691150	T	C	0.001	0	0.001					Rare SNP

1	rs76266322	170691232	C	T	0.001	0.001	0					Rare SNP
1	1:170691257	170691257	A	G	0.001	0	0.001					Rare SNP
1	1:170691481	170691481	A	T	0.001	0	0.002					Rare SNP
1	1:170691521	170691521	T	A	0.002	0.001	0.002					Rare SNP
1	1:170691654	170691654	T	C	0.001	0.001	0.001					Rare SNP
1	rs58675363	170691864	A	G	0.002	0.002	0.002					Rare SNP
1	1:170691971	170691971	G	A	0.001	0.001	0					Rare SNP
1	1:170692058	170692058	C	T	0.001	0.001	0					Rare SNP
1	rs17551172	170692104	C	T	0.288	0.293	0.283	0.0489	1.0501	0.1049	0.6413	Common SNP
1	1:170692223	170692223	A	G	0.001	0	0.001					Rare SNP
1	1:170692253	170692253	A	T	0.001	0	0.001					Rare SNP
1	1:170692448	170692448	T	A	0.001	0	0.001					Rare SNP
1	1:170692474	170692474	T	C	0.001	0.001	0					Rare SNP
1	1:170692655	170692655	A	G	0.001	0.001	0.001					Rare SNP
1	rs10919453	170692742	C	G	0.075	0.077	0.072	0.0642	1.0663	0.1803	0.7217	Common SNP
1	1:170692810	170692810	T	C	0.001	0.001	0					Rare SNP
1	1:170692882	170692882	C	G	0.001	0.001	0					Rare SNP
1	1:170692929	170692929	G	C	0.001	0.001	0					Rare SNP
1	1:170692944	170692944	G	A	0.001	0.002	0					Rare SNP
1	1:170692970	170692970	C	G	0.001	0.001	0					Rare SNP
1	1:170693015	170693015	G	A	0.003	0.002	0.004					Rare SNP
1	1:170693018	170693018	T	A	0.003	0.002	0.004					Rare SNP
1	1:170693076	170693076	T	C	0.001	0	0.001					Rare SNP
1	1:170693222	170693222	T	C	0.001	0.001	0					Rare SNP
1	1:170693251	170693251	C	T	0.001	0.001	0					Rare SNP
1	1:170693456	170693456	T	G	0.001	0.001	0					Rare SNP
1	1:170693482	170693482	A	G	0.001	0	0.001					Rare SNP
1	rs12142379	170693538	T	C	0.075	0.077	0.072	0.0642	1.0663	0.1803	0.7217	Common SNP
1	1:170694475	170694475	G	A	0.001	0.001	0					Rare SNP
1	1:170694693	170694693	C	T	0.001	0	0.001					Rare SNP
1	1:170694771	170694771	G	T	0.001	0	0.001					Rare SNP

1	1:170694937	170694937	A	T	0.001	0.001	0						Rare SNP
1	rs74476977	170694946	G	C	0.073	0.076	0.07	0.082	1.0854	0.182	0.6524		Common SNP
1	1:170695343	170695343	C	T	0.001	0.001	0						Rare SNP
1	1:170695466	170695466	G	A	0.001	0.001	0						Rare SNP
1	1:170695472	170695472	C	G	0.001	0	0.001						Rare SNP
1	1:170695527	170695527	C	G	0.001	0.001	0						Rare SNP
1	rs16863523	170695653	T	G	0.003	0.003	0.002						Rare SNP
1	1:170695787	170695787	C	T	0.001	0.001	0.001						Rare SNP
1	1:170695927	170695927	G	A	0.001	0.001	0						Rare SNP
1	rs6701640	170696474	A	C	0.18	0.205	0.155	0.3367	1.4003	0.1219	0.0057		Common SNP
1	rs75166316	170696504	G	A	0.002	0.001	0.003						Rare SNP
1	1:170696515	170696515	C	T	0.003	0.003	0.002						Rare SNP
1	rs16863527	170696647	T	C	0.001	0	0.001						Rare SNP
1	1:170696813	170696813	T	G	0.003	0	0.005						Rare SNP
1	1:170696887	170696887	T	C	0.001	0	0.001						Rare SNP
1	1:170697001	170697001	A	C	0.001	0.001	0						Rare SNP
1	1:170697037	170697037	A	G	0.001	0	0.001						Rare SNP
1	1:170697042	170697042	C	G	0.001	0.001	0						Rare SNP
1	1:170697074	170697074	G	A	0.005	0.005	0.004						Rare SNP
1	1:170697285	170697285	G	A	0.005	0.004	0.006						Rare SNP
1	1:170697428	170697428	T	G	0.001	0.001	0						Rare SNP
1	1:170697497	170697497	A	C	0.001	0.001	0.001						Rare SNP
1	1:170697596	170697596	A	C	0.001	0	0.001						Rare SNP
1	1:170697813	170697813	A	C	0.001	0	0.001						Rare SNP
1	rs78232995	170697837	T	C	0.002	0.001	0.002						Rare SNP
1	1:170697941	170697941	A	G	0.001	0.001	0						Rare SNP
1	rs78712657	170698062	T	C	0.063	0.062	0.064	-0.0295	0.9709	0.1915	0.8774		Common SNP
1	rs76168575	170698172	G	A	0.001	0	0.002						Rare SNP
1	1:170698472	170698472	G	A	0.001	0.001	0						Rare SNP
1	1:170698507	170698507	C	T	0.001	0.001	0.001						Rare SNP
1	1:170698706	170698706	T	G	0.001	0.002	0						Rare SNP

1	1:170698776	170698776	G	A	0.001	0	0.001						Rare SNP
1	1:170699084	170699084	C	T	0.002	0.001	0.003						Rare SNP
1	rs12409048	170699149	G	A	0.288	0.292	0.283	0.0432	1.0442	0.1049	0.6805		Common SNP
1	rs3830154	170699220	T	G	0.001	0.001	0						Rare SNP
1	1:170699346	170699346	G	A	0.001	0	0.001						Rare SNP
1	rs76156084	170699377	C	T	0.019	0.013	0.026	-0.6178	0.5391	0.3395	0.0688		Common SNP
1	1:170699437	170699437	T	C	0.001	0	0.001						Rare SNP
1	1:170699473	170699473	C	T	0.001	0	0.001						Rare SNP
1	1:170699485	170699485	A	C	0.001	0.001	0						Rare SNP
1	1:170699644	170699644	A	G	0.001	0	0.001						Rare SNP
1	rs74555079	170699657	G	A	0.002	0.001	0.003						Rare SNP
1	rs76964094	170699674	T	C	0.074	0.076	0.072	0.0483	1.0495	0.1808	0.7895		Common SNP
1	1:170699783	170699783	T	G	0.001	0.001	0.001						Rare SNP
1	1:170699805	170699805	T	C	0.006	0.009	0.004						Rare SNP
1	1:170699976	170699976	C	T	0.001	0.001	0						Rare SNP
1	1:170700003	170700003	G	T	0.001	0	0.001						Rare SNP
1	1:170700140	170700140	C	T	0.001	0.001	0.001						Rare SNP
1	1:170700196	170700196	T	C	0.001	0.001	0						Rare SNP
1	1:170700204	170700204	A	T	0.001	0.001	0						Rare SNP
1	1:170700342	170700342	A	G	0.001	0	0.001						Rare SNP
1	1:170700499	170700499	T	C	0.001	0	0.001						Rare SNP
1	1:170700546	170700546	T	G	0.001	0.001	0						Rare SNP
1	rs1476040	170700758	A	G	0.254	0.278	0.231	0.265	1.3034	0.1098	0.0158		Common SNP
1	1:170701165	170701165	A	T	0.001	0.001	0						Rare SNP
1	rs11589002	170701197	G	T	0.073	0.075	0.072	0.0322	1.0327	0.1813	0.859		Common SNP
1	1:170701224	170701224	G	A	0.001	0.002	0						Rare SNP
1	1:170701332	170701332	T	C	0.001	0	0.001						Rare SNP
1	rs11587746	170701334	T	C	0.073	0.075	0.072	0.0322	1.0327	0.1813	0.859		Common SNP
1	rs17551291	170701432	C	T	0.305	0.308	0.302	0.0317	1.0322	0.104	0.7608		Common SNP
1	rs17551298	170701453	G	A	0.305	0.308	0.302	0.0317	1.0322	0.104	0.7608		Common SNP
1	1:170701523	170701523	T	C	0.001	0.001	0						Rare SNP

1	1:170701686	170701686	C	A	0.001	0.001	0						Rare SNP
1	1:170701701	170701701	G	A	0.001	0	0.001						Rare SNP
1	1:170701707	170701707	C	A	0.001	0.001	0						Rare SNP
1	1:170701736	170701736	G	T	0.001	0.001	0						Rare SNP
1	1:170701796	170701796	A	G	0.001	0.002	0						Rare SNP
1	1:170701809	170701809	T	G	0.001	0.001	0						Rare SNP
1	rs12139252	170701830	A	C	0.073	0.075	0.072	0.0322	1.0327	0.1813	0.859		Common SNP
1	rs79395499	170701842	T	A	0.002	0.001	0.003						Rare SNP
1	1:170701913	170701913	T	G	0.001	0.001	0.001						Rare SNP
1	rs74123167	170702214	G	A	0.002	0.001	0.002						Rare SNP
1	1:170702216	170702216	A	G	0.001	0	0.001						Rare SNP
1	rs76074817	170702257	A	G	0.073	0.075	0.072	0.0322	1.0327	0.1813	0.859		Common SNP
1	1:170702265	170702265	G	A	0.001	0	0.001						Rare SNP
1	1:170702281	170702281	C	A	0.001	0	0.001						Rare SNP
1	1:170702428	170702428	G	A	0.001	0	0.001						Rare SNP
1	1:170702515	170702515	A	G	0.001	0.001	0						Rare SNP
1	1:170702560	170702560	C	T	0.001	0.001	0						Rare SNP
1	1:170702644	170702644	A	C	0.001	0	0.001						Rare SNP
1	1:170702661	170702661	T	A	0.001	0	0.001						Rare SNP
1	1:170702678	170702678	T	C	0.001	0	0.001						Rare SNP
1	1:170702768	170702768	C	G	0.001	0	0.001						Rare SNP
1	1:170703008	170703008	T	C	0.001	0	0.001						Rare SNP
1	1:170703084	170703084	T	C	0.001	0.001	0						Rare SNP
1	1:170703663	170703663	C	T	0.001	0.001	0						Rare SNP
1	1:170703763	170703763	C	T	0.001	0.001	0.001						Rare SNP
1	1:170703831	170703831	C	T	0.001	0	0.001						Rare SNP
1	1:170703943	170703943	T	C	0.001	0	0.001						Rare SNP
1	rs11590551	170703981	G	A	0.073	0.075	0.072	0.0322	1.0327	0.1813	0.859		Common SNP
1	1:170704104	170704104	T	C	0.003	0.004	0.002						Rare SNP
1	1:170704196	170704196	A	G	0.003	0.003	0.003						Rare SNP
1	1:170704234	170704234	T	C	0.001	0.002	0						Rare SNP

1	1:170704279	170704279	T	A	0.001	0.001	0							Rare SNP
1	rs35076444	170704697	T	C	0.001	0.001	0							Rare SNP
1	1:170704959	170704959	C	G	0.001	0.001	0							Rare SNP
1	rs78621299	170704997	A	G	0.002	0.001	0.003							Rare SNP
1	rs74123168	170704999	A	T	0.002	0.002	0.002							Rare SNP
1	1:170705061	170705061	G	C	0.001	0.001	0							Rare SNP
1	1:170705189	170705189	C	A	0.001	0.001	0							Rare SNP
1	1:170705313	170705313	C	T	0.001	0.001	0							Rare SNP
1	1:170705350	170705350	C	T	0.001	0.001	0							Rare SNP
1	1:170705465	170705465	C	T	0.001	0	0.001							Rare SNP
1	1:170705512	170705512	A	C	0.001	0.001	0.001							Rare SNP
1	1:170705754	170705754	C	A	0.001	0.001	0							Rare SNP
1	1:170705813	170705813	G	A	0.001	0.001	0.001							Rare SNP
1	1:170706092	170706092	C	T	0.001	0	0.002							Rare SNP
1	rs41272503	170706356	C	G	0.066	0.065	0.067	-0.0291	0.9713	0.1893	0.8778			Common SNP
1	1:170706447	170706447	T	C	0.001	0	0.001							Rare SNP
1	1:170706606	170706606	T	A	0.001	0	0.001							Rare SNP
1	rs73036701	170706639	G	A	0.002	0.002	0.002							Rare SNP
1	1:170706994	170706994	A	G	0.001	0.001	0							Rare SNP
1	rs74123171	170707243	T	A	0.002	0.002	0.001							Rare SNP
1	1:170707292	170707292	T	C	0.001	0	0.001							Rare SNP
1	1:170707387	170707387	T	C	0.001	0	0.001							Rare SNP
1	1:170707477	170707477	C	G	0.002	0.001	0.003							Rare SNP
1	1:170707481	170707481	T	C	0.001	0.001	0							Rare SNP
1	rs41272505	170707509	A	G	0.031	0.035	0.028	0.2189	1.2447	0.273	0.4226			Common SNP
1	1:170707590	170707590	T	C	0.001	0.001	0							Rare SNP
1	1:170707617	170707617	C	T	0.001	0.001	0							Rare SNP
1	rs3820416	170707675	T	C	0.306	0.311	0.302	0.0425	1.0434	0.1038	0.6823			Common SNP
1	1:170708005	170708005	A	C	0.001	0	0.001							Rare SNP
1	1:170708021	170708021	T	C	0.001	0	0.001							Rare SNP
1	1:170708066	170708066	G	A	0.001	0	0.001							Rare SNP

1	1:170708181	170708181	T	C	0.001	0.001	0						Rare SNP
1	1:170708203	170708203	G	A	0.001	0.001	0						Rare SNP
1	1:170708338	170708338	A	T	0.001	0.001	0.001						Rare SNP
1	1:170708346	170708346	C	T	0.002	0.002	0.001						Rare SNP
1	1:170708423	170708423	A	G	0.001	0	0.001						Rare SNP
1	1:170708597	170708597	A	C	0.001	0	0.001						Rare SNP
1	rs4656797	170708637	C	G	0.18	0.206	0.154	0.3512	1.4208	0.122	0.004		Common SNP
1	rs41272507	170708668	T	G	0.046	0.052	0.04	0.2606	1.2977	0.2145	0.2244		Common SNP
1	1:170708744	170708744	G	T	0.001	0	0.001						Rare SNP
1	1:170708877	170708877	A	G	0.001	0.001	0						Rare SNP
1	1:170708882	170708882	T	C	0.001	0	0.001						Rare SNP
1	1:170708937	170708937	T	C	0.001	0	0.001						Rare SNP
1	1:170708939	170708939	T	G	0.001	0.001	0						Rare SNP
1	rs11589091	170708980	T	C	0.074	0.076	0.072	0.0484	1.0496	0.1808	0.7888		Common SNP
1	1:170709085	170709085	G	A	0.001	0.001	0						Rare SNP
1	1:170709126	170709126	G	A	0.001	0.001	0						Rare SNP
1	rs4656799	170709195	C	T	0.375	0.381	0.37	0.0483	1.0495	0.0981	0.6221		Common SNP
1	rs6665663	170709245	T	G	0.002	0.001	0.002						Rare SNP
1	1:170709257	170709257	G	C	0.001	0.001	0						Rare SNP
1	1:170709274	170709274	A	C	0.001	0	0.001						Rare SNP
1	rs16863548	170709358	T	C	0.002	0.002	0.002						Rare SNP
1	1:170709411	170709411	G	A	0.001	0.001	0.001						Rare SNP
1	1:170709497	170709497	A	G	0.002	0.001	0.003						Rare SNP
1	1:170709503	170709503	G	A	0.001	0.001	0						Rare SNP
1	1:170709512	170709512	C	T	0.001	0.001	0						Rare SNP
1	1:170709551	170709551	A	G	0.008	0.006	0.01						Rare SNP
1	1:170709571	170709571	A	G	0.001	0.001	0.001						Rare SNP
1	1:170709620	170709620	A	C	0.002	0.001	0.003						Rare SNP
1	rs10919454	170709635	G	A	0.286	0.306	0.266	0.217	1.2423	0.11	0.0486		Common SNP
1	1:170709642	170709642	C	T	0.001	0.002	0						Rare SNP
1	rs74123172	170709893	G	A	0.002	0.002	0.002						Rare SNP

1	1:170710078	170710078	G	A	0.001	0	0.001							Rare SNP
1	1:170710117	170710117	T	C	0.001	0	0.001							Rare SNP
1	rs16863554	170710119	T	G	0.003	0.003	0.002							Rare SNP
1	1:170710130	170710130	T	C	0.001	0.001	0.001							Rare SNP
1	1:170710247	170710247	T	G	0.001	0	0.001							Rare SNP
1	1:170710413	170710413	A	G	0.005	0.005	0.005							Rare SNP
1	1:170710414	170710414	T	A	0.001	0	0.001							Rare SNP
1	1:170710453	170710453	T	C	0.001	0.001	0							Rare SNP
1	1:170710522	170710522	T	C	0.001	0.001	0							Rare SNP
1	1:170710537	170710537	C	T	0.001	0	0.001							Rare SNP
1	1:170710596	170710596	G	A	0.001	0	0.001							Rare SNP
1	rs76239666	170710609	G	A	0.007	0.006	0.008							Rare SNP
1	1:170710653	170710653	T	C	0.001	0.001	0							Rare SNP
1	1:170710674	170710674	A	C	0.003	0.005	0							Rare SNP
1	rs10489232	170710683	G	T	0.129	0.117	0.141	-0.2198	0.8027	0.1402	0.1168			Common SNP
1	1:170710728	170710728	C	T	0.001	0	0.001							Rare SNP
1	1:170710783	170710783	G	C	0.001	0.001	0							Rare SNP
1	1:170710929	170710929	C	T	0.001	0	0.001							Rare SNP
1	1:170711007	170711007	A	C	0.001	0	0.001							Rare SNP
1	1:170711040	170711040	C	T	0.001	0.001	0							Rare SNP
1	1:170711089	170711089	C	T	0.007	0.008	0.006							Rare SNP
1	rs11811206	170711092	T	C	0.074	0.077	0.071	0.0828	1.0863	0.1808	0.6469			Common SNP
1	1:170711162	170711162	G	A	0.003	0.003	0.002							Rare SNP
1	1:170711266	170711266	A	G	0.001	0.001	0.001							Rare SNP
1	1:170711490	170711490	G	A	0.007	0.006	0.008							Rare SNP
1	1:170711543	170711543	C	T	0.001	0.001	0							Rare SNP
1	1:170711550	170711550	T	G	0.001	0	0.001							Rare SNP
1	1:170711579	170711579	C	A	0.001	0	0.001							Rare SNP
1	1:170711634	170711634	C	T	0.001	0	0.001							Rare SNP
1	1:170711705	170711705	T	C	0.001	0	0.001							Rare SNP
1	1:170711747	170711747	T	C	0.001	0.001	0.001							Rare SNP

1	1:170711794	170711794	C	T	0.001	0	0.001						Rare SNP
1	1:170711809	170711809	C	T	0.001	0	0.001						Rare SNP
1	1:170711838	170711838	T	A	0.001	0.001	0						Rare SNP
1	1:170711958	170711958	A	G	0.001	0.001	0.001						Rare SNP
1	1:170712030	170712030	G	A	0.001	0.001	0						Rare SNP
1	1:170712078	170712078	C	G	0.001	0.001	0						Rare SNP
1	1:170712360	170712360	G	T	0.001	0	0.001						Rare SNP
1	rs2421492	170712490	A	G	0.426	0.458	0.393	0.2732	1.3142	0.0962	0.0045		Common SNP
1	1:170712535	170712535	T	A	0.001	0	0.001						Rare SNP
1	1:170712578	170712578	T	A	0.001	0.001	0						Rare SNP

Abbreviations: Chr=chromosome number, REF=referent allele, ALT=alternate allele, MAF=Minor allele frequency, OR=Odds ratio, SE=Standard error

Supplementary Table S3: List of Potentially Deleterious Variants in *PRRX1*

Position	Amino acid change	MAF in AF cases	MAF in referents	Conservation score	Polyphen score	dbSNP ID	Frequency in EVS
170633544	R62Q	0	0.0043	4.951	0.986	rs74674242	0.013
170695466	V175M	0.0022	0	3.654	0.99	rs201365132	3.08E-04
170695472	Q177E	0	0.0022	5.292	0.713	-	-
170695527	T195R	0.0022	0	3.377	0.622	-	-
170699437	C207R	0	0.0022	2.913	na	-	-
170705313	P242S	0.0022	0	4.02	0.006	rs201359953	7.70E-05

Abbreviation: EVS, exome variant server; MAF, minor allele frequency

Supplementary Table S4: Regions analyzed for enhancer activity

Region Name	Genomic coordinates (hg19)
E	Chr1:170586854-170590138
F	Chr1:170609564-170610260
G	Chr1:170591448-170593386
H	Chr1:170602464-170605074
I	Chr1:170633741-170635800
J	Chr1:170635472-170640974
K	Chr1:170641154-170642626
Pr	Chr1:170630677-170633741

Supplementary Table S5: Predicted altered transcription factor binding sites by JASPAR

Possible Enhancers

Gene name	Ensembl ID (Human)	Minor allele PWM score	Major allele PWM score(*)
TEAD1	ENSG00000197905	12.41	10.85
TEAD4	ENSG00000187079	12.28	10.97
Twist2	ENSG00000233608	11.22	
NFATC1	ENSG00000131196	8.46	7.59
NFATC3	ENSG00000072736	7.59	7.94
CLOCK	ENSG00000134852	7.87	
Myc	ENSG00000136997	7.60	
Npas2	ENSG00000170485	7.27	
HLTF	ENSG00000071794	7.08	
ID4	ENSG00000172201	7.06	
Bhlha15	ENSG00000180535	6.92	
Creb3l2	ENSG00000182158	6.81	
Arnt	ENSG00000143437	6.11	
Neurog1	ENSG00000181965	6.11	4.32
MNT	ENSG00000070444	6.01	
Mlxip	ENSG00000175727	5.85	
NEUROD2	ENSG00000171532	5.83	3.59
TBX4	ENSG00000121075	5.75	
MAX	ENSG00000125952	5.64	
FIGLA	ENSG00000183733	5.49	
TBX5	ENSG00000089225	5.29	
Hes1	ENSG00000114315	5.16	
Id2	ENSG00000115738	5.08	
Mycn	ENSG00000134323	5.02	
TCF4	ENSG00000196628	4.89	
TBX1	ENSG00000184058	4.78	
TBR1	ENSG00000136535	4.76	
MGA	ENSG00000174197	4.75	
JDP2	ENSG00000140044	4.37	
TCF3	ENSG00000071564	3.91	
HLF	ENSG00000108924	3.84	3.21

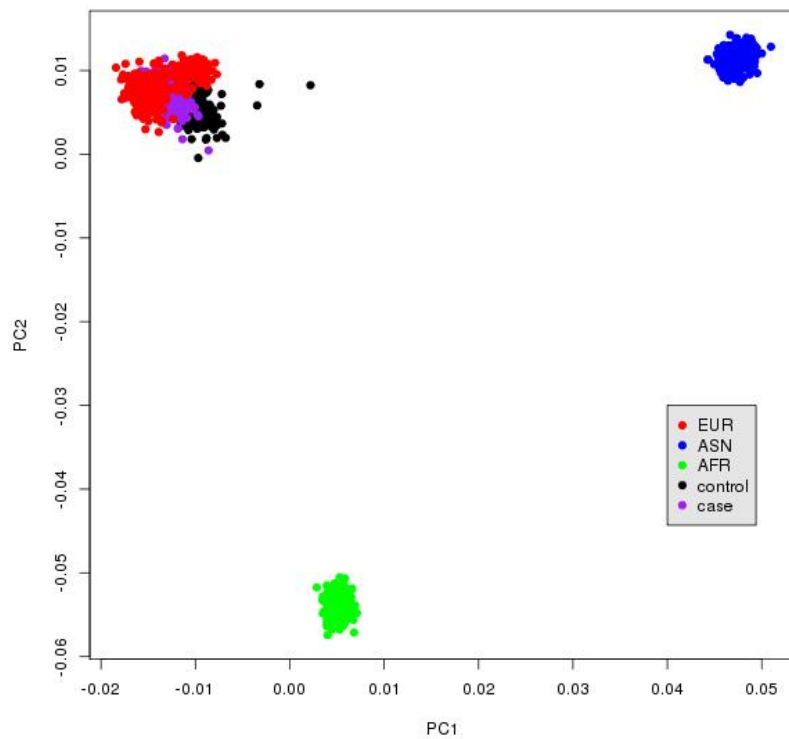
Possible Repressors

Gene name	Ensembl ID	Major allele PWM score
SOX10	ENSG00000100146	5.28
ELF5	ENSG00000135374	5.40
Ahr::Arnt	ENSG00000106546	5.75

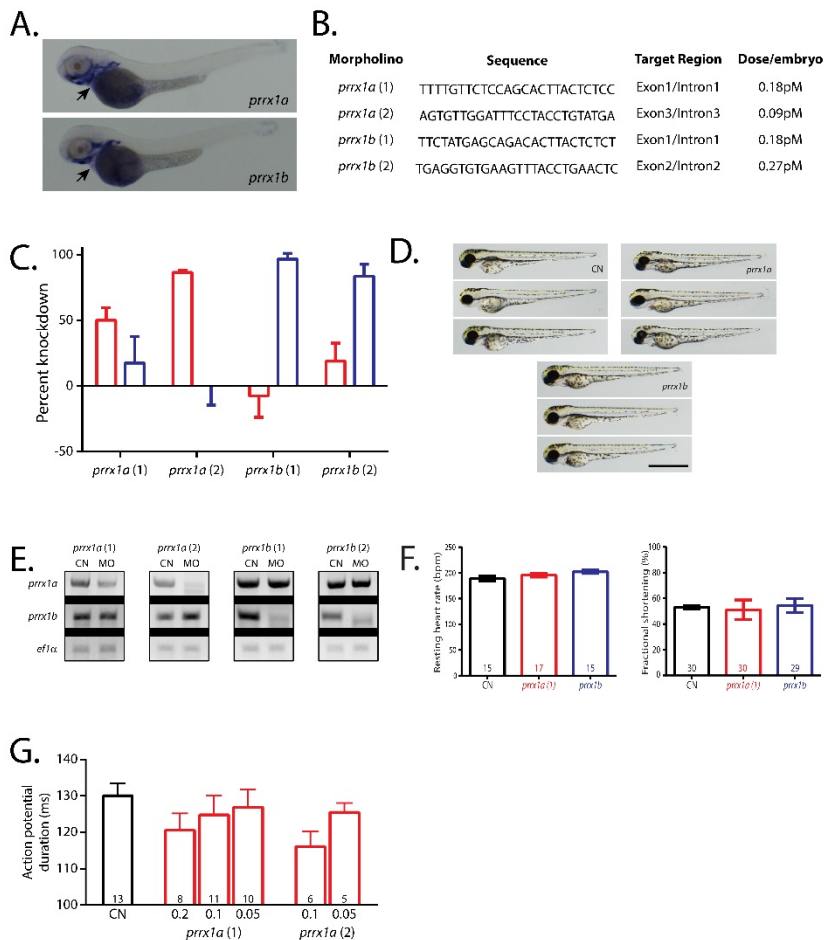
SNAI2	ENSG00000019549	3.46	
Stat5a::Stat5b	ENSG000000126561 ENSG000000173757	3.37	

Supplementary Figure S1: Principal components analysis of previously genotyped study samples.

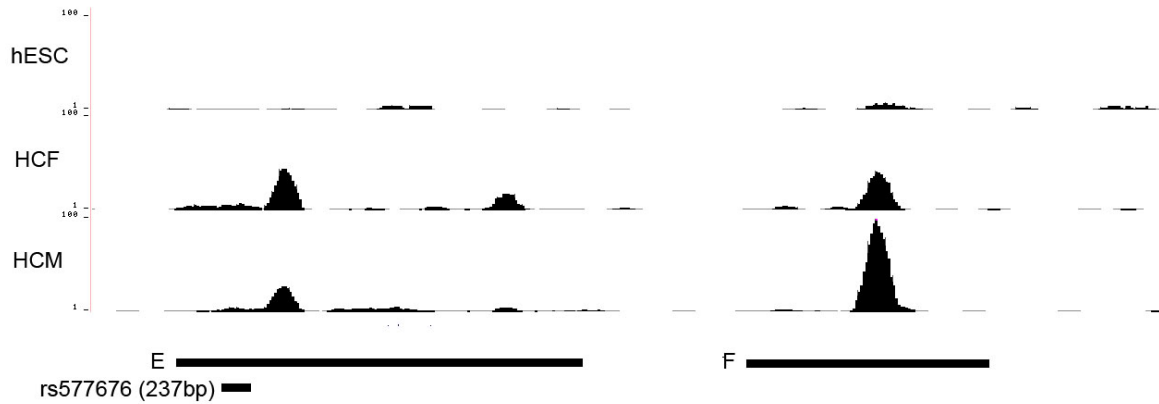
Ancestry analysis of previously genotyped cases and controls demonstrating European ancestry of study samples. A subset of studied samples were previously genotyped either by Affymetrix SNP 550k array or Affymetrix SNP 6.0 array. The genotypes were then imputed to the 1000 Genomes Project panel to generate a common genotype set. We then performed clumping analysis and selected 45921 common (MAF \geq 0.05) independent variants, which were combined with the 1000 Genomes Reference Panel. PLINK was used to perform the principal components analysis. The Figure S1 plot shows the first two principle components. Samples from three ancestries in 1000 Genomes Project were shown: European (EUR), Asian (ASN) and African (AFR). "Controls" represent control samples in the current study, and "Cases" represent case samples in the current study.



Supplementary Figure S2: *prrx1* knockdown in zebrafish embryos. A. in situ hybridization demonstrating localization of *prrx1a* and *prrx1b* mRNA in 72 hour post fertilization zebrafish embryos. Arrows indicate the cardiac region. B. Morpholino sequences for *prrx1a* and *prrx1b* with target region and effective dose per embryo. C. Percent knockdown of *prrx1a* and *prrx1b* paralogues for each morpholino as calculated by semi-Q PCR. Error bars represent the SEM. D. Representative images of gross morphology seen at 72 hpf after microinjection with respective morpholinos. Scale bar represents 1mm. E. Representative gel images of PCR amplifications following injection of each morpholino. F. Resting heart rate and ventricular fraction shortening in 72 hpf zebrafish hearts. Numbers within bars represent n. Error bars in all panels represent the SEM. G. Atrial action potential durations measured from 72 hpf zebrafish with diminishing doses of morpholino. Numbers within bars indicate the number of biological replicates. Numbers below x-axis indicate the concentration of morpholino injected. 0.2 (*prrx1a* (1)) and 0.1 (*prrx1a* (2)) were doses used in Figure 4 of the main manuscript.

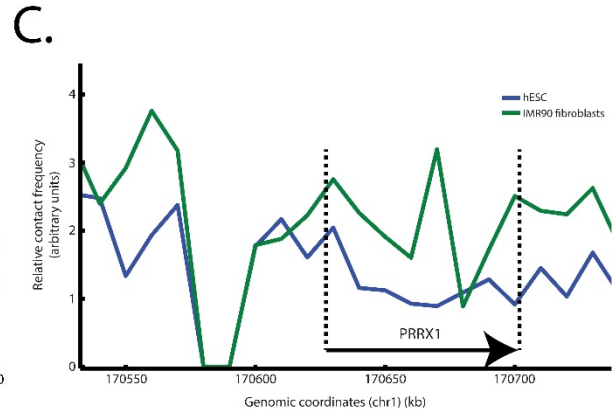
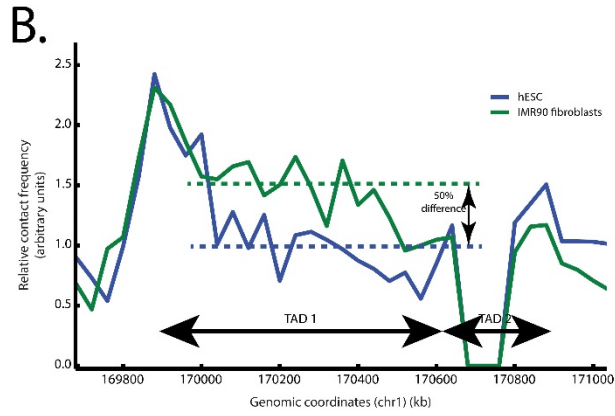
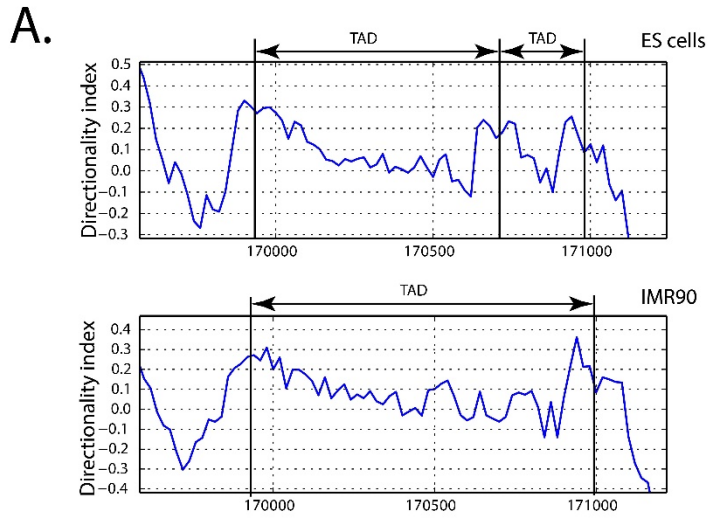


Supplementary Figure S3: DNaseI hypersensitivity in hESC, HCM and HCF around the enhancer regions E and F. ENCODE UCSC Browser tracks showing DNaseI hypersensitivity in human embryonic stem cells (hESC), human cardiac fibroblasts (HCF) and human cardiac myocytes (HCM) in the area of E and F enhancer regions (depicted on the lower panel). 237bp region containing functional SNP for AF (labeled rs577676(237bp)) is shown according to its position on the E enhancer.



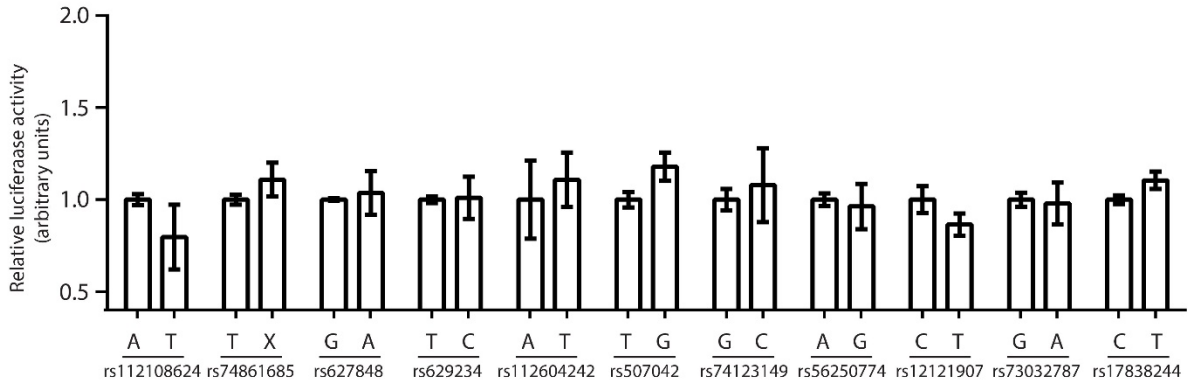
Supplementary Figure S4: Hi-C derived directionality ratios and virtual 3C. A. Directionality index showing the degree of upstream and downstream interaction bias within chr1:169600000-171200000 region. Two distinct topologically associated domains in human embryonic stem cell line (hESC) and single topologically associated domain in fibroblast cell line (IMR90) are labeled as TAD. **B.** A region inside a topologically associated domain (labeled TAD2) containing *PRRX1* gene in human embryonic stem cells (hESC) was used as a reference point. Solid green and blue lines represent relative contact frequency of this domain with other sections of the region in human embryonic stem cell line (hESC) and fibroblasts (IMR90) respectively. Dotted green and blue lines outline interaction frequencies of the domain containing *PRRX1* (TAD2) and domain containing E and F enhancer region (TAD1), and show that the difference in relative contact probability is about 50%. Reference region was set to the bin 170720-170760, approximately in the center of TAD 2. Analysis was performed at 40kb resolution. Relative contact probability is a frequency of interaction between two regions ("observed"), divided by an average interaction frequency between pairs of regions separated by that distance ("expected"). **C.** The 20-kb region containing E and F enhancer region was used as a reference (gray shaded area, 170580-170600 kb). Solid green and blue lines represent relative contact frequency of the E and F enhancer region with nearby genomic locations in human embryonic stem cell line (hESC) and fibroblasts (IMR90) respectively. *PRRX1* promoter and gene are labeled with an arrow. Each point represents contact frequency of a 10-kb bin; e.g. point placed at 170605kb would represent contact frequency of the region 170600-170610 with the reference region. Relative contact probability is a frequency of interaction between two regions ("observed"), divided by an average interaction frequency between pairs of regions separated by that distance ("expected").

PRRX1 and Atrial Fibrillation



Supplementary Figure S5: Screening for a functional SNP within *PRRX1* promoter region.

Luciferase assay results showing the effect of genotype on enhancer activity. Assayed regions of the *PRRX1* promoter region, ranging from 100-300bp in length and containing a single SNP, are labeled by rsID and respective base composition.



Supplementary Figure S6: Analysis of the effect of rs577676 on the enhancer function via serial deletions.

A. Schematic showing the deletions tested within the 140bp enhancer region in respect to rs577676. **B.** The representative zebrafish for the enhancer activity screen displaying the tissue distribution and intensity of the enhancer activity. Scale bar represents 1mm. **C.** qRT-PCR results measuring relative EGFP expression levels in zebrafish enhancer screen. * represents $p < 0.05$ when compared to the full length construct.

