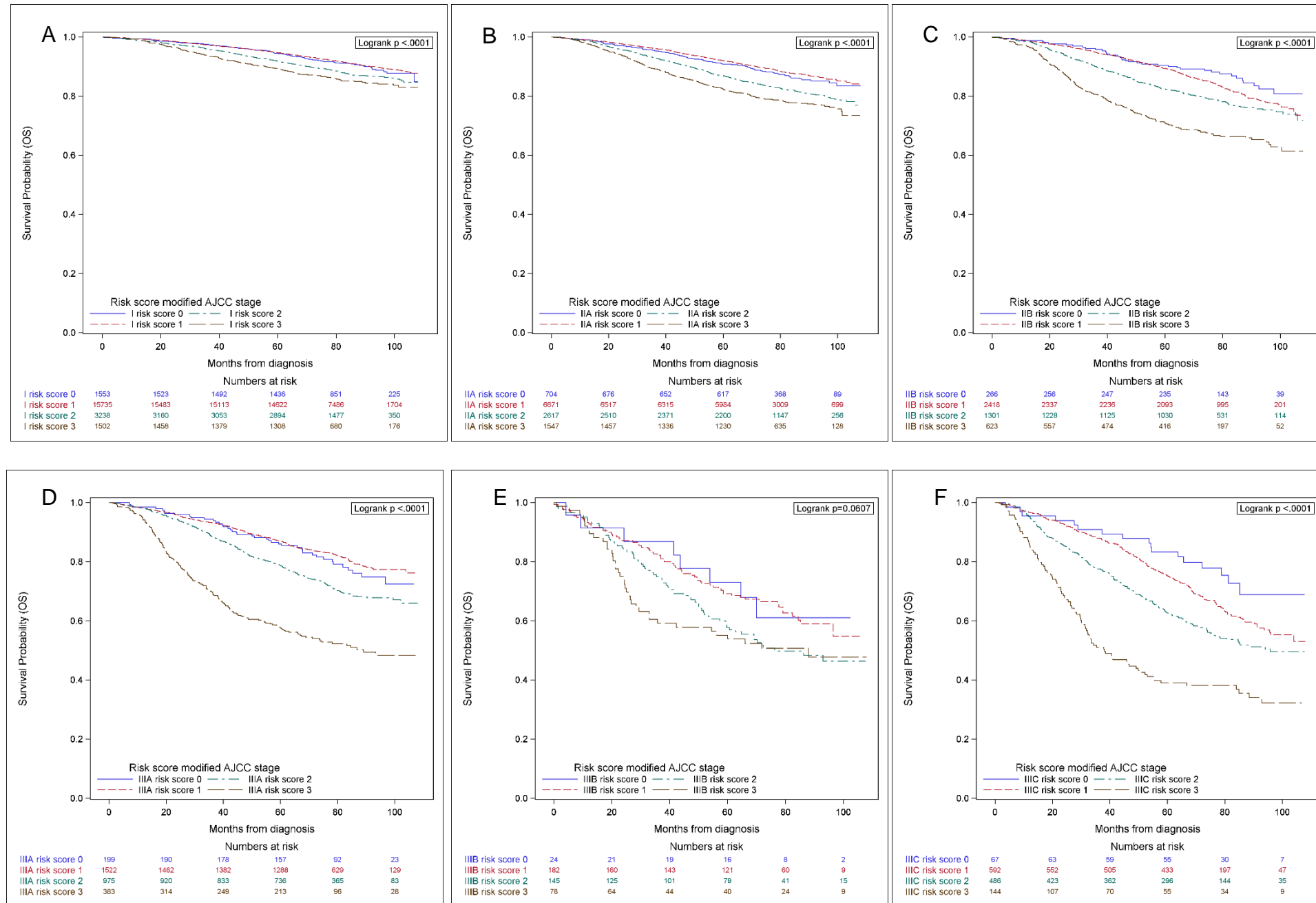


Supplemental Figures for:  
Incorporating tumor characteristics to the AJCC breast cancer staging system  
Mariana Chavez-MacGregor et al.

**Figure S1.** Overall survival according to stage (I-III) and risk score\*



\* Risk score was assigned according to a point system: 1 point if estrogen receptor (ER) negative, 1 point if HER2 negative and 1 point for grade 3. A) stage I, B) stage IIA, C) stage IIB, D) stage IIIA, E) stage IIIB, F) stage IIIC