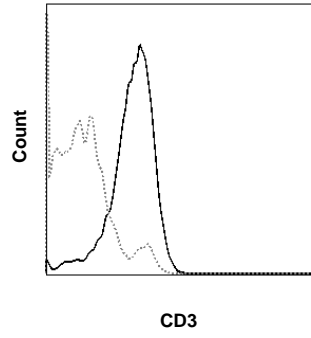
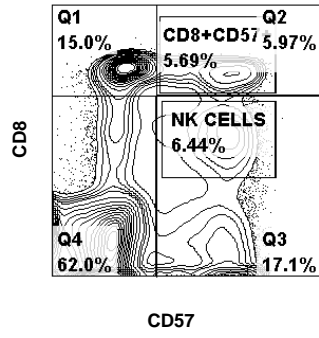
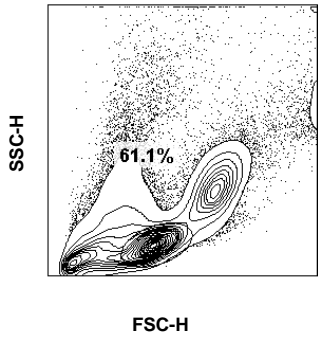


MS case	Sex/age died	Age at onset	Age at progression	Age at wheelchair	Mean % of CD3+CD57+ cells / perivascular WM infiltrate (a)	SD	Mean % of CD3+CD57+ cells / meningeal infiltrate (b)	SD
MS124	f/30	25	26	26	9,6	2,701851217	13,6	1,816590212
MS286	m/45	29	34	34	12	1,224744871	13,6	1,140175425
MS293	f/53	35	42	43	9	2,828427125	9,4	0,894427191
MS312	f/68	45	47	53	6,6	1,816590212	8	1
MS325	m/51	48	48	49	12,2	1,483239697	9	1
MS330	f/59	19	35	38	8,2	1,095445115	8,2	0,836660027
MS342	f/35	29	33	34	12,6	2,073644135	15,4	1,816590212
MS356	f/45	28	41		11,8	2,167948339	13,2	0,836660027
MS402	m/46	25	37	38	12	0,707106781	12,8	1,303840481
MS407	f/44	25	33	34	14	1,870828693	15	1



..... NK Cells
———— CD8+CD57+T cells