

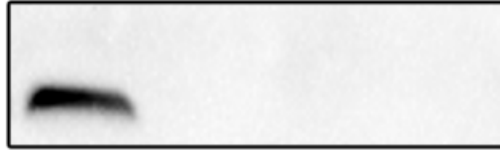
# Clinicopathological and prognostic significance of PKM2 protein expression in cirrhotic hepatocellular carcinoma and non-cirrhotic hepatocellular carcinoma

**Yan Liu<sup>1, \*</sup>, Hao Wu<sup>2, \*</sup>, Ying Mei<sup>2</sup>, Xiong Ding<sup>2</sup>, Xiaoli Yang<sup>2</sup>, Changping Li<sup>3</sup>, Mingming Deng<sup>3</sup>, Jianping Gong<sup>2</sup>**

<sup>1</sup>Department of Geriatric gastroenterology, the Fifth People's Hospital of Chengdu, Sichuan, 611130, China. <sup>2</sup>Department of Hepatobiliary Surgery, the Second Affiliated Hospital of Chongqing Medical University, Chongqing 400016, China. <sup>3</sup>Department of gastroenterology, the Affiliated Hospital of Southwest Medical University, Luzhou 646000, China. \*These authors contributed equally to this work. Correspondence and requests for materials should be addressed to C.L. (email:506854209@qq.com) or M. D. (email:793070544@qq.com) or J.G. (email: gongjianping11@126.com)

IP: PKM2  
Input IgG NT HCC

WB:anti-GAPDH



IP: GAPDH  
Input IgG NT HCC

WB:anti-PKM2

