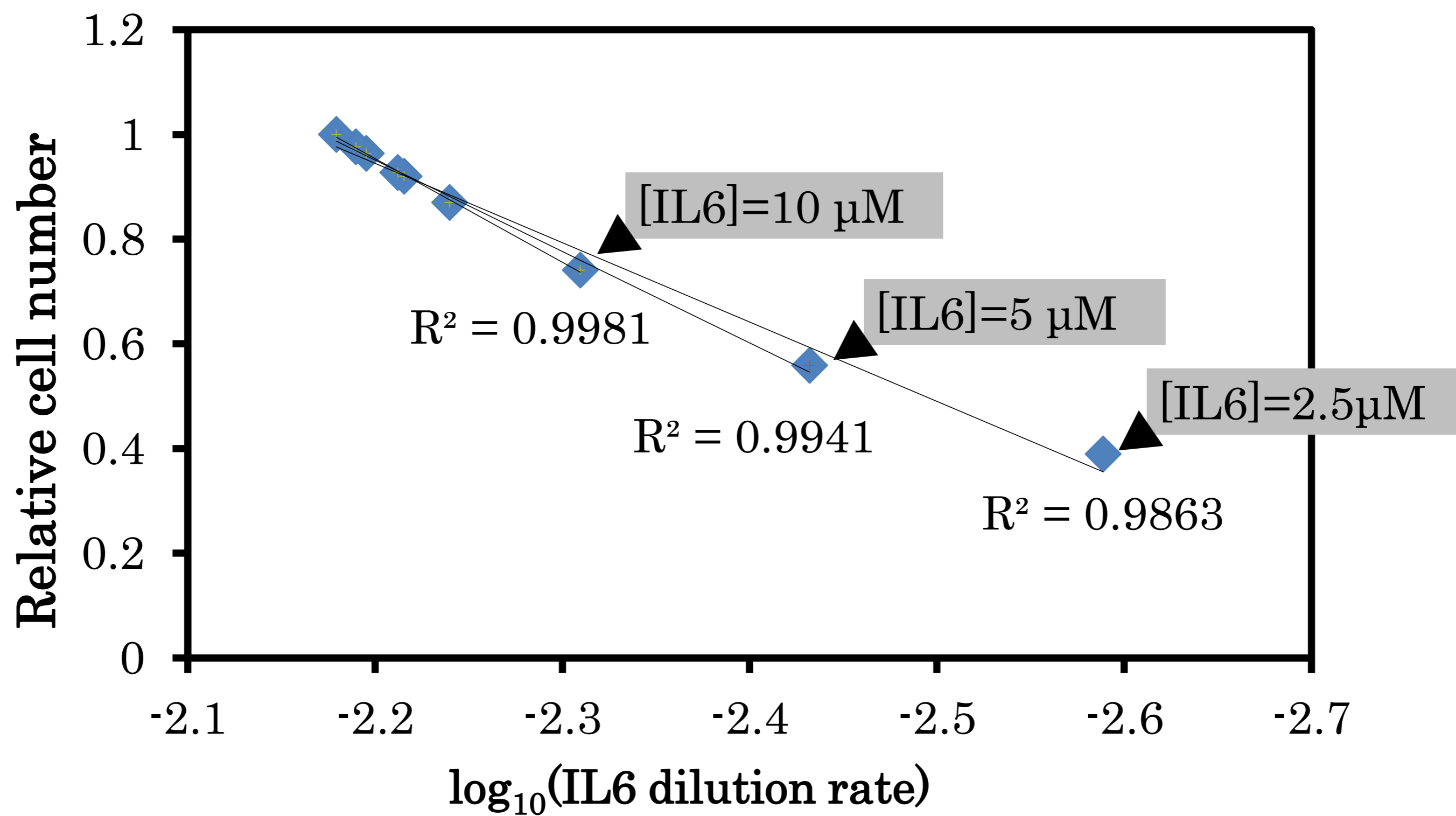
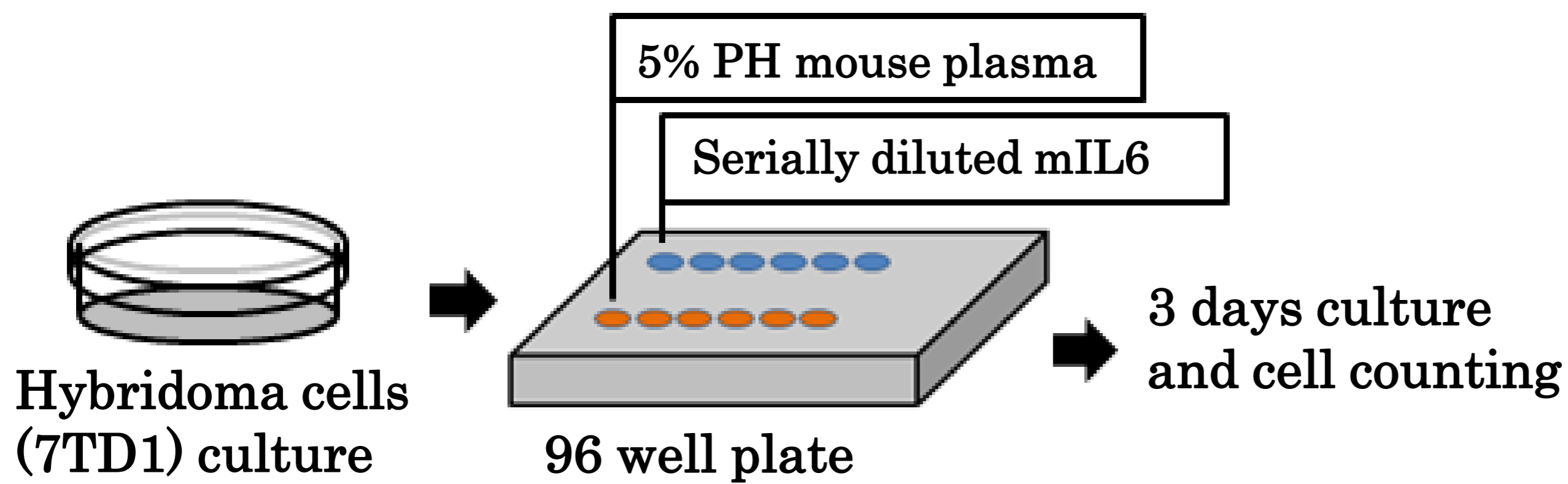
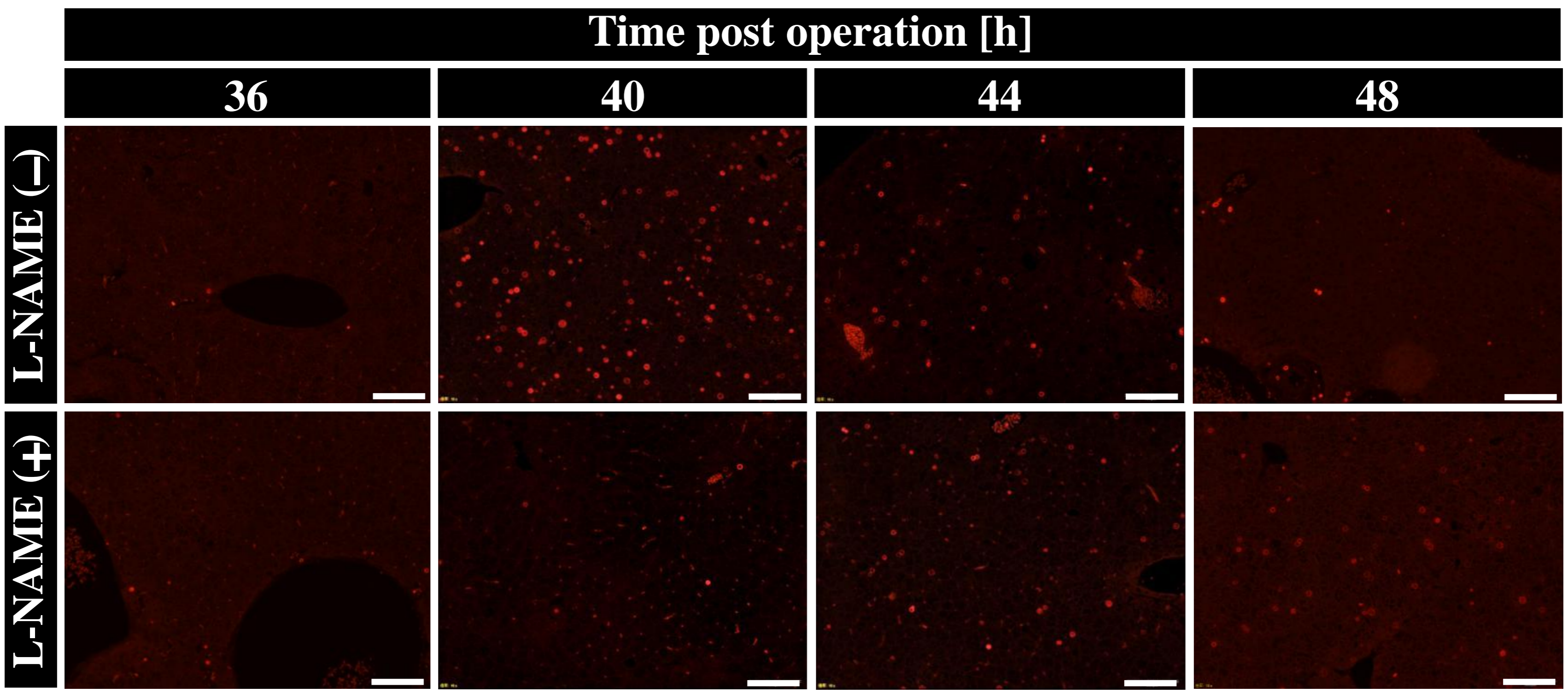


Supplementary Figure 1



Supplementary Fig. 1. IL6 bioassay experiment scheme and standard curve. 7TD1 cells were seeded into 96 wells with either serially diluted mouse IL6 recombinant protein or mouse plasma. 7TD1 cells were stimulated to proliferate by IL6 protein, and IL6 protein activity in mouse plasma could be measured by cell counting in certain wells.

Supplementary Figure 2



Supplementary Fig. 2. BrdU immunostaining on liver sections on each time point post PH. The scale bars correspond to 100 μ m.