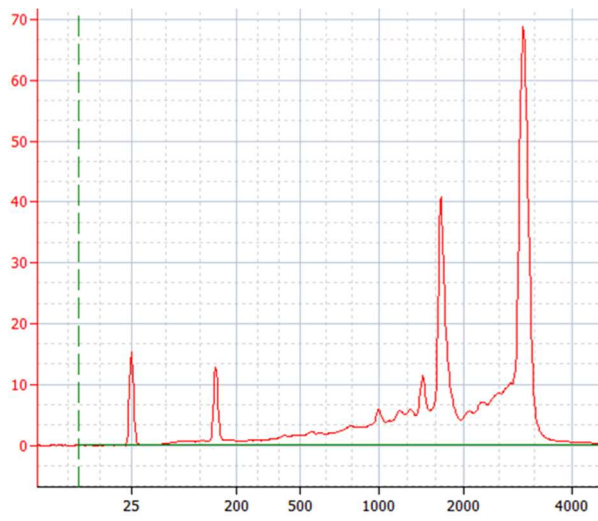
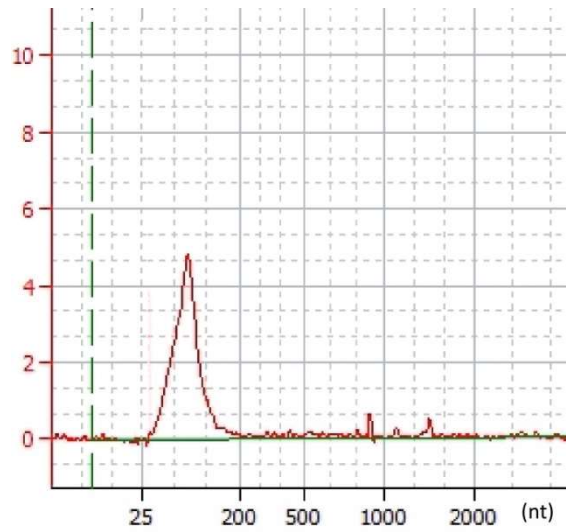


**A For total RNA**



**B For RIP RNA sample**



**S1 Fig. RNA QC results of the total RNA and RNA for m<sup>6</sup>A-seq samples.**

(A) RNA quality of the total RNA for the RNA-seq sample was high with RIN over 8.5. (B) RNA fragmentation for the m<sup>6</sup>A-seq samples was consistent in the RIP experiments, with an average length of 106 nt.