

Crimped Nanofibrous Biomaterials Mimic Microstructure and Mechanics of Native Tissue and Alter Strain Transfer to Cells

Spencer E. Szczesny^{1#}, Tristan P. Driscoll^{1,2#}, Hsiao-Yun Tseng³, Pang-Ching Liu³, Su-Jin Heo^{1,2}, Robert L. Mauck^{1,2}, Pen-Hsiu G. Chao^{3*}

¹McKay Orthopaedic Research Laboratory, Department of Orthopaedic Surgery, Perelman School of Medicine, University of Pennsylvania, Philadelphia, PA

²Department of Bioengineering, University of Pennsylvania, Philadelphia, PA

³National Taiwan University School of Medicine and School of Engineering, Taipei, Taiwan

Contributed equally to this work.

***Address for Correspondence:**

Pen-hsiu G. Chao, Ph.D.
Associate Professor of Biomedical Engineering
National Taiwan University
510 YongLin Building
49 Fanglan Road
Taipei, Taiwan 106
Phone: 886.2.2732.8014
Email: pgchao@ntu.edu.tw

Number of pages: 2

Number of figures: 1

Supplementary Figures

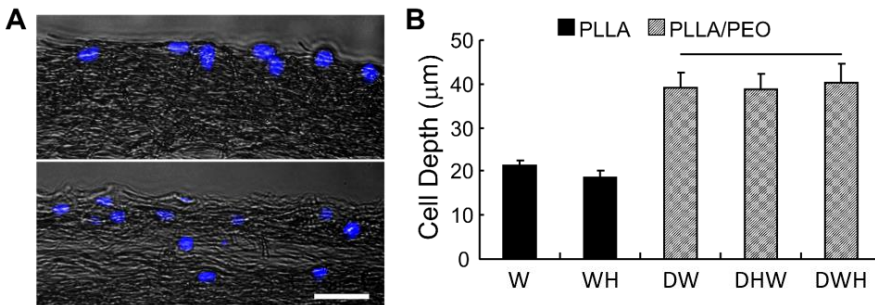


Figure S1. Effect of scaffold treatment on cell infiltration. (A) Representative image of cell infiltration. Blue: cell nucleus, Scale bar = 50 µm. (B) Washing out the PEO fibers significantly increased cell infiltration depth, which is indicative of an increase in scaffold porosity. (line: $p < 0.01$ vs PLLA groups)