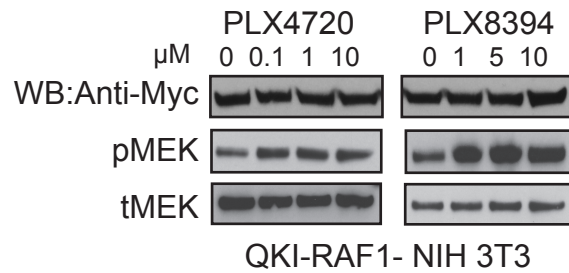
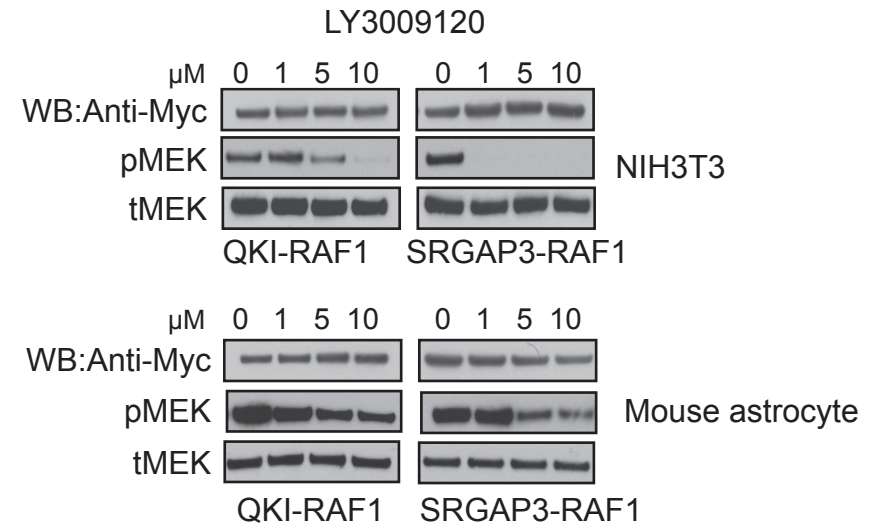


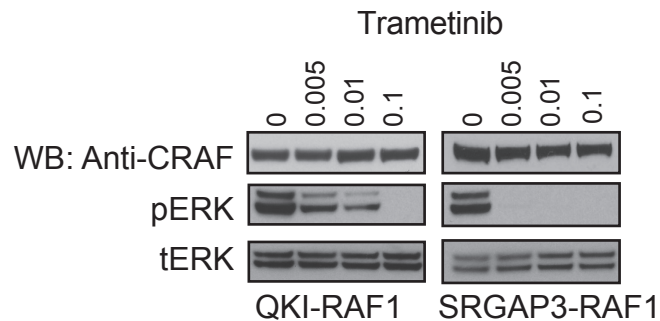
a.



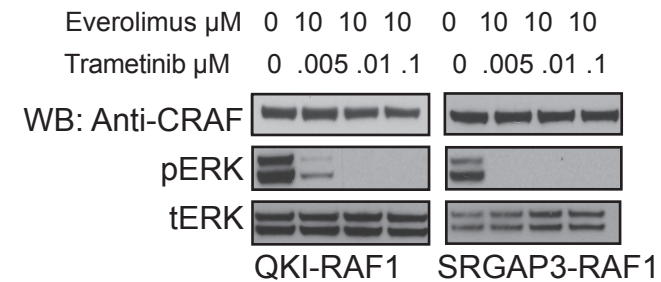
b.



c.



d.



Supplementary Figure S5. Kinase inhibitors do not affect CRAF fusion protein stability in heterologous model systems. (a) PLX4720 and PLX8394 treated cell lysates from NIH3T3s (from figure 2a) were tested for Myc-tagged CRAF-fusion proteins in the presence of increasing RAF inhibitor dosage. (b) LY3009120 treated cell lysates from PMAs (from figure 5a) and NIH3T3 (from figure 5c) were tested for Myc-tagged CRAF-fusion proteins with increasing drug concentrations. (c) Trametinib treated cell lysates from PMAs (from figure 6a, c) and (d) Trametinib+Everolimus treated PMAs (from figure 7a, c) were tested for CRAF-fusion proteins with increasing trametinib concentrations.